

**Böhm**  
The German organ pioneer

**SEMPRA 3.0**

***PRO-LIB***

# Creativity Sound Emotion...

The number 3 has always represented the whole, the perfect!

Experience the musical perfection of the new **SEMPRA 3.0** generation and the sensational **PRO-LIBRARY**.

Hundreds of new, fabulous sounds and fantastic new **Creative-Tools**, that are exclusive to the Böhm SEMPRA now make these instruments more exceptionally sonorous and musical as no organ generation has ever been before!

This brochure is a supplement to our current 52-page SEMPRA catalog. The information contained therein still applies, but the new SEMPRA 3.0 and Pro-Lib developments make the instruments even more valuable. You will find all the information about this, our new SEMPRA SE30 model and the new BÖHM headquarters in 31688 Nienstädt in this brochure.

We expressly reserve the right to make changes in the interests of technical and musical progress. Some of the instruments illustrated contain optional extras or cabinet versions.







# SEMPRA 3.0

## *PRO-LIB*

When we introduced SEMPRA a few years ago, many things were absolutely new. The system starts fast - faster than any other keyboard or organ. The razor-sharp color display, which is easy to read from all angles and responds reliably and quickly. The breathtakingly fast system performance. The simple and intuitive operation, but most especially, the absolute operational reliability! And, of course, the exceptional sound quality and versatility right from the start!

With version 2.0 and the innovative GST (Guitar Strumming) technology, many impressive new features were introduced.

And today we are introducing a brand new SEMPRA:

### **SEMPRA 3.0 & *PRO-LIB*** **The new generation** **The best SEMPRA ever**

Our latest developments turn the SEMPRA into a whole new generation of organ and keyboard instruments! New functions, a new musicality and hundreds of new sounds that put everything that has gone before in the shade!

This once again demonstrates the advantage of the BÖHM system: SEMPRA 3.0 and the sensational new Pro-Lib sound library are now not only part of every new SEMPRA, but can also be easily added to any existing SEMPRA: Sustainability through expansion and renewal, that has been the philosophy of the BÖHM brand for almost 70 years!

The sound quality of the SEMPRA is raised to a new level by the Pro-Lib sound library. SEMPRA sounds absolutely outstanding, distinctly better!

In addition, the new **Creative Tools** available exclusively in SEMPRA, such as **Ensemble**, the **Block Chords** in the RealOrgan or the interactive **Ritardando-/Accelerando** tempo control now offer you even more playing and expressive possibilities that are unique on the market.

That has been our ambition from the very beginning: To create musical instruments that not only sound amazing, but also inspire your playing with a maximum of creative possibilities while offering the highest reliability and ease of use.


We promise you: The new SEMPRA meets these high standards to a degree that no previous generation of organs and keyboards has ever achieved. Experience **SEMPRA 3.0** and **PRO-LIB** for yourself and be amazed!

**PRO-LIB** - sounds like real





## PRO-LIB - The new sound reference



The new Professional Library, or **PRO-LIB**, is the tonal heart of the new SEMPRA generation. The number of samples used in the AMADEUS Pro-D sound generation is now more than twice as large as in the previous 2.0 version. More than 400 new sounds have been added.



The palette ranges from new **acoustic pianos** (new multi-layer system including damper resonance) to new **electric pianos**, the **Elton grand**, many new **guitars, basses, saxophones, accordions, brass, strings** und **voices** through to completely new **synthesizer** sounds.

New, long samples have been added in almost every area. Many of the new sounds are based on real stereo samples.

We would like to take this opportunity here to thank the many outstanding musicians from the Schaumburg music scene who supported us during the recording sessions for the new Pro-Lib samples.

In addition to the fantastic pianos, the new trumpets and flugelhorns, the saxophones (solo and in a set) and especially the unique strings from the classic violin to the fantastic James Last strings are worthy of special mention.

An extensive package of new guitars is also included. They were recorded using a microphone or with an integrated pickup. Variants with distinctive plectrum playing are also included. A number of guitars are equipped with percussion effects on a certain octave range that can be used by the automatic accompaniment. This one is also pleased to have many new basses, which not only enrich the styles, but also provide a rich new sound foundation when playing bass on the pedal.



In the numerous new **Pro-Lib drum sets** a new "Humanizer" provides more liveliness, especially when several hits are made in succession on the same instrument. The slight variations in sound caused by the different strength of the beats at varying points, which are mainly characterized by minimal tuning tolerances, are authentically reproduced. And a new room controller allows you to adjust the ambience for the drums, which you can save in your registrations or control live using a controller function.

All factory registrations have been NEWLY created so that you can play with the new Pro-Lib sounds straight away. You will find the titles in the SONG list again in the usual positions, but with completely new registrations. There is now an arpeggio for almost every setting (whether 4 registrations for each style or 6 registrations for each song suggestion). Also all SEMBRA factory styles have been rearranged, partly re-recorded and adapted to the new drums and sounds. So you can enjoy the new Pro-Lib soundscape directly and comprehensively when playing on your SEMBRA 3.0!

But what about the popular sounds from AMADEUS? They're all still there, of course! "Upgraders" from the 2.0 version can therefore rest assured: All your own styles and registrations will play again immediately!

It's fun to gradually adapt the existing repertoire to the new Pro-Lib sounds and take it to a new tonal level.

But a lot has also happened to the familiar sounds. Our team listened meticulously to all the existing samples. In many cases, we switched to material with a higher resolution. As a result, existing registrations and styles sound rounder, fuller and more balanced



PRO-LIB

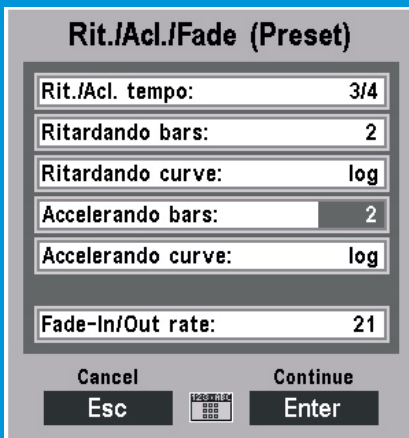




Ensemble settings for upper manual



room ambience controls for drums/accompaniment, lead- und Harmony Voice (singing)



Ritardando/Accelerando parameters

SEMPRA organs and keyboards offer an unrivaled variety of fascinating live playing functions. These allow you to play and display even complex sound combinations and arrangements with ease.

These organs need no wave players, no tricks and no fake bottom! Creative live playing and thus the deepest joy and fun when making music - that is what the SEMPra is all about!

And the SEMPra **Creative Tools** give you more options than any other keyboard or organ on the market!

The **multitude of parts/instruments per manual** (up to 10 and more per keyboard), functions such as **Distance, individual swell control, Multi-Solochord, SemptraChord, Freeze, Hawaii, Individual Sound Control**, real manual couplers, directly accessible **Drum Group mute buttons, Arpeggiator, Sideline** with recording of all control panel actions, individual **assignment of all sliders and drawbars**, the **extensive DSP effect possibilities** directly in the sound (up to 6 effects simultaneously per DSP!), **D-MiX effects** and real **Quadrophony**, the **unrivaled versatility of MIDI control options** via up to 10 MIDI interfaces (including 8x USB) and much more open up fantastic playing possibilities for the most extensive arrangements. No matter what musical idea you have - you can realize it with the SEMPra **Creative Tools**!

For the new SEMPra 3.0 generation, our musicians have come up with even more fantastic **Creative Tools** that will further inspire your playing:

### Ensemble mode for the Upper manual:

For polyphonic playing, the notes are divided between up to 3 (!) instruments/parts (upper right 1-3). This means that several musicians play under your fingers - just like in a real orchestra or big band.



## Live controllable Ritardando/Accelerando:

Many pieces of music require tempo changes during the performance. Automated accompaniments usually have to fit in here, fixed programmed sequences in styles or sequences restrict playing freedom too much. But now there is the new ritardando/accelerando function in SEMBRA 3.0: You can use it to purposefully slow down the tempo of the accompaniment while playing and also speed it up again.

Various factors and curves (linear or logarithmic) are available for changing the tempo - individually adjustable for both directions. Control is convenient, e.g. via a foot switch function.

**Block Chords for the RealOrgan:** You can now also play block chords with just one finger in the drawbar section in conjunction with the solo chord. This makes your full chord progressions sound almost 'wunderlich' in the drawbar sound.

## Room ambience controller for drums and accompaniment:

Use these new controls to set the room ambience for the accompaniment tracks and the drums.

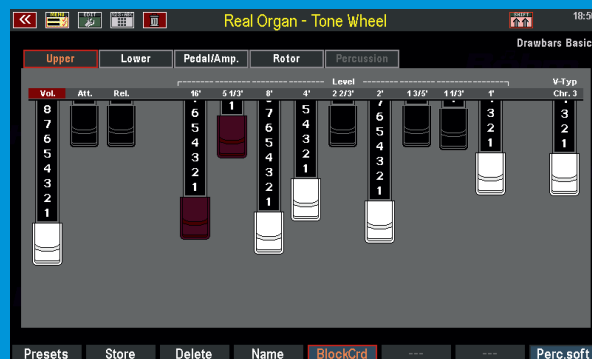
**New Firm button assignments** for even more comfortable playing with real-time functions such as Hawaii effect, Ritardando, Freeze, Upper 2 on/off...

## New parameters in the Amadeus sound editor:

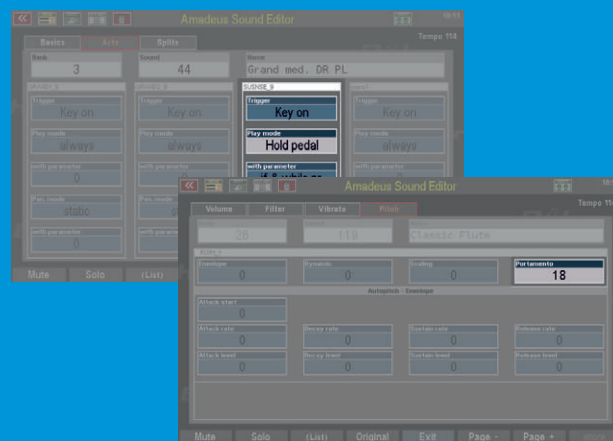
**Key-On/Off Trigger** via hold (sustain) pedal:

Switch on/off individual element sounds in real time via the hold pedal.

**Portamento:** The portamento effect can now also be activated directly in the sound (and of course still in the manual or pedal parts).



Block Chords for the RealOrgan



new Amadeus sound parameters:  
Key on/off Trigger by hold pedal & Portamento



new firm button assignments

## SEMPRA 3.0 & *PRO-LIB*

...can my SEMPRA do that, too?

You've probably already read enough to get you excited about the new SEMPRA 3.0 generation. And we haven't even mentioned some of it yet - e.g. the more than doubled memory for factory and user data per (!) user account! Plenty of space for all your own, current and future factory data.

If you decide to purchase a new SEMPRA now, you can enjoy the new musicality of Generation 3.0 including Pro-Lib. Both features are now part of the standard equipment of every new SEMPRA. Depending on the model, various apps and additional features are now also available as standard. You can find more information on this in the current price list.

Are you already the happy owner of a SEMPRA? Then upgrade right away and "promote" your instrument to the new Generation 3 - without restrictions! The upgrade is particularly easy if your SEMPRA already contains version 2.0 and the latest Amadeus Pro-D and D-MiX hardware. This is because these modules with their extended memory areas are a prerequisite. We offer the right upgrade for all constellations - with or without hardware customization.

Ask us right away for a solution for your SEMPRA and start playing tomorrow in the new sound of SEMPRA 3.0 with Pro-Lib. Experience your SEMPRA in a completely new way!





# SEMPRA SE30 stage&studio

The superior double keyboard  
Now of course incl.  
SEMPRA 3.0 and  
***PRO-LIB!***







Listening is sometimes the best way to success. And we take our customers' wishes very seriously. Customers have been asking us more frequently for two-manual keyboards. The result is the new **SEMPRA SE30**.

The **SEMPRA SE30** fulfills these wishes for such an instrument with flying colours and is the most compact two-manual keyboard on the market. The two high-quality manuals, each with 76 lightly weighted keys, can of course be played with velocity sensitivity and also have an aftertouch function.

In contrast to constructions with two keyboards placed one above the other or even a suspended keyboard, the two manuals of the **SE30** are ergonomically optimally arranged and therefore allow real organ-like playing - even with one hand on both manuals at the same time. You can also use the practical manual preset buttons to switch your registrations at lightning speed.

Externally, the typical organ drawbars are not present, but of course the **SEMPRA SE30** can also feature the coveted Böhm **RealOrgan**, which reproduces the various legendary drawbar organs absolutely authentically. No other keyboard offers this! You can set up to 12(!) drawbars in a flash using the display or the 12 sliders on the control panel, which can be switched directly. LEDs next to each slider directly show you the settings that have been set or recalled from the saved registrations.

The registration and playing possibilities of the **SEMPRA SE30** go far beyond what you are used to with other keyboards: even the basic version of the **SE30** offers four freely assignable playing parts in the lower manual and even more than 5 parts in the upper manual. Additional part packages allow you to play up to 8 parts simultaneously in the upper and lower manual...etc.

With its **extensive basic equipment including SEMPRA 3.0, Pro-Lib, Arpeggiator**, the **Easy editors for styles and arpeggiator**, **Sideline Recording**, **Soundcontroller app**, **DSP-Erweiterung**, Amadeus **sound editor** and the **extensive MIDI functions** (2 x MIDI In/Out, Thru and 8x USB-MIDI), the **SEMPRA SE30** is also a versatile command center in any studio or stage setup.

Get to know the new Megakeyboard **SEMPRA SE30** at one of our events or "live" at the new BÖHM headquarters in Nienstädt. Your enthusiasm is guaranteed!

# Welcome to the most beautiful organ and keyboard studio in Germany...

...At least that's the view of many of our customers and friends who have already visited our new headquarters and organ factory in Nienstädt. Haven't been there yet? Then you've missed something. Be sure to drop by - with no obligation - and be impressed by our new premises. Our prestigious studios "breathe" enthusiasm for music and instruments. You can feel it in every detail: true enthusiasts are at work here, for whom your musical satisfaction is the highest good and the most valuable confirmation of their work!

You will find the entire SEMPRA model range ready for demonstration on over 1,100 square meters - many models are also available in different finishes. No other brand offers you more individuality, including the exterior finish! You can get your dream instrument from us - customized just the way you want it! A special attraction: our quadrophonic studio: experience the impressive reproduction of the SEMPRA via four separate channels. Sounds from the front and back, breathtaking spatial and echo effects - a special kind of sound experience, exclusively available from Böhm! Incidentally, the Quadrofonie is now available in all multi-manual SEMPRA models!

In addition to Böhm instruments, we also offer keyboards and digital pianos from the market leader YAMAHA. We show you the entire YAMAHA keyboard range up to the flagship Genos2. And in our piano salon you can try out the CLP and Arius digital pianos as well as the portable pianos from the P series. All YAMAHA instruments are generally available directly from stock. You can buy from us just as cheaply as on the Internet - but the advice is priceless!

A good instrument is one thing, but the playback quality must also be right! Keyswerk is not only your specialist for keyboard instruments - we also offer the right solution for all sound reinforcement issues! Only the best is good enough for us. That's why we rely on the brand quality of products from Dynacord and Electro-Voice as well as Yamaha studio monitors, which our musicians also use themselves to mix the sounds, styles and registrations for the SEMPRA models.

Take advantage of our decades of experience. We are happy to advise you!





# Welcome to the organ manufactory!

Your first address for all things music



**Böhm**  
ORGELN | KEYBOARDS

Keyswerk Musikelektronik GmbH  
Sülbecker Str. 20-22  
31688 Nienstadt  
Germany

Tel. (+49) 05722 / 905088

Email: [info@boehm-orgeln.de](mailto:info@boehm-orgeln.de)

**[www.boehm-organs.com](http://www.boehm-organs.com)**