

**Böhm**  
The German Organ Pioneer

# SEMPRA

*Organs and Keyboards*

**Böhm**



Let us convince you that we  
offer the BEST for your music!

# SEMPRA 2.0 GST

instruments from

**Böhm**

the German organ pioneer.

Innovations for over 65 years  
speak for themselves..





**CONTENT:**

Why play the organ.....	4
Why play SEMPRA.....	5
Böhm - the German organ pioneer.....	6
SEMPRA 2.0 - That's the way to make an organ.....	7
The Organ manufacture.....	8
The superior concept.....	10
AMADEUS Pro-D - Your Orchestra.....	12
Solochord and SempraChord.....	13
RealOrgan - Drawbars without compromises.....	14
GST style accompaniment - real guitar strummings.....	15
SEMPRA Arpeggiator - your creative tool.....	16
Sideline and Interactive Playbacks.....	17
Individual User accounts.....	18
SEMPRA model overview.....	19
SEMPRA SE10/SE10 DB 2.0 GST.....	20
SEMPRA SE20 2.0 GST.....	22
SEMPRA SE40 2.0 GST.....	24
SEMPRA SE60 2.0 GST.....	26
SEMPRA SE70 2.0 GST.....	28
SEMPRA SE80 2.0 GST.....	30
SEMPRA SE100 2.0 GST.....	32
SEMPRA im Detail.....	34
Software packs: Sounds, Styles & SONG-lists.....	42
Specifications.....	46
SEMPRA upgrades.....	50

We expressly reserve the right to make changes in the interest of technical and musical progress.  
Some of the instruments shown in this catalog have optional additional equipment or cabinet versions

WHY PLAY THE ORGAN





## Playing the organ - the special expression of musical creativity

Playing a musical instrument is a dream for many people. Let us realize this dream together for you! To find a pleasant balance to everyday life in the creative engagement with music, to feel emotions while experiencing sounds and melodies, to inspire one's own imagination, but also incidentally one's own cognitive abilities - this is more important today than ever!

But which instrument should I choose? The organ has always fascinated music lovers in a very special way. Because no other instrument offers the musician comparably versatile playing and sound possibilities. The special thing about it is that the organ combines a practically unlimited number of timbres - even the sounds of other musical instruments - and makes them available simultaneously on several playing levels, the manuals and the bass pedal.

Just as a painter mixes his colors on the palette, so the organist can combine the sounds of his instrument over and over again, creating the most varied sound colors and musical moods. The player is simultaneously the conductor and each individual soloist of an entire orchestra - a very special musical experience that optimally accommodates the creativity of the musician.

The organ has every right to be called the "queen of musical instruments". And this is especially true for the modern electronic organ - at least when it offers the player such a wide range of possibilities as the SEMPRA from BÖHM!

All beginnings...are easy on an instrument of the innovative new SEMPRA 2.0 generation from BÖHM. 2.0 stands for the latest version of this technology with many innovations and detail improvements that make these instruments even more sonorous, even more creative - and even easier to use.

Are you put off by the many switches and controls? Thanks to the SEMPRA 2.0 technology developed and perfected by BÖHM, playing on our instruments is no longer "witchcraft" - although SEMPRA offers you far more musical possibilities than other organs and keyboards. Intuitive user guidance via the eye-catching, lightning-fast 9" touch display, a multitude of playing aids, and thousands of ready-made registrations in the exclusive SEMPRA 3-D presets allow you to play many well-known pieces of music directly at the "touch of a button". Simply select your favorite song from the SONG list, tap on one of the up to 6 individual registrations and start playing. SEMPRA takes care of the "rest"! If you wish, a perfect rhythm section, authentic guitarists, pearly arpeggios or even a multi-track playback will accompany you in perfect sync - making your band and musical experience perfect!

**Nothing can replace experience!**

BÖHM is the pioneer for the development of high-quality electronic organs in Germany. For over 60 years, our brand has been synonymous with tradition and innovation in the development of electronic organs. These decades of experience and the comprehensive technical and musical know-how are the decisive guarantors for the high level you can expect from all BÖHM instruments.

In the beginning there was the pioneering spirit of the physicist Dr. Rainer Böhm. Long before other companies copied his ideas, he developed high-quality instruments with extraordinary sound characteristics and versatile playing possibilities, which could also be continuously expanded and adapted to the latest state of the art. A principle that still today is a guarantor for the longevity and sustainability of our valuable instruments.

The ideas and the products of BÖHM were enthusiastically welcomed again and again and created the basis for the success of the BÖHM brand which continues to this day. A number of groundbreaking developments, such as the first transistor organ in Europe, the first three- and four-manual organs, the world's first single-finger accompaniment, the first registration memory computer that could be programmed directly at the console, the first touch dynamics in an organ, and many more came from BÖHM. Many of our developments have been and are being adapted by other manufacturers and have become the standard for electric organs.

Even today, innovative developments are the order of the day for us. The new SEMPRA 2.0 model generation demonstrates this to perfection.



**Dr. Rainer Böhm**



Innovative playing functions and a completely new real-time technology introduced by us for the first time in organ building and designed for absolute operational reliability, simple operation and ultra-fast performance (SEMPRA is not a Windows PC!), as well as the special sound quality of the latest AMADEUS Pro-D and D-MiX audio processors, ensure a playing pleasure with SEMPRA organs and keyboards that is probably not offered by any other organ!

But even the best can be improved: With the latest operating system generation 2.0, we have now made the SEMPRA even more perfect. New sounds, new styles and registrations as well as fantastic new functions expand the performance spectrum of the SEMPRA once again and raise the instruments to an unprecedented musical level.

SEMPRA 2.0 also impressively underscores the future-proof nature of SEMPRA - an invaluable advantage for you! Older SEMPRA instruments can be upgraded to the new 2.0 version - simply by loading the new software. But hardware components can also be easily renewed as the state of the art advances, thus bringing the instrument back up to the latest state of the art.

Be sure: with a SEMPRA organ or Keyboard (which is actually also an organ), you get a musical instrument that you will not find a second time on the market.

On the following pages we will show you what makes the SEMPRA organs and keyboards from BÖHM so unique. This already starts with the exterior...

# SEMPRA 2.0



The fascination of SEMPRA begins before you have even played the first note! Because the culture of music making is only perfect when the outer frame is also right!

Exclusive to SEMPRA: The elegant cabinets of our instruments are created by master craftsmen from valuable solid or real woods. The natural grain of the wood radiates a homely atmosphere in any room. By the way, it remains intact even when stained black or white - a feast for the eyes!

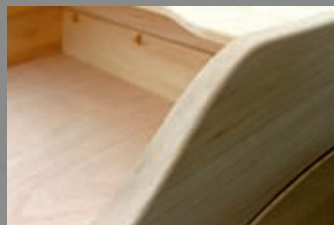
Choose from over 25 variations. We will be happy to match the wood tone and type to your individual furnishings.

Of course, individual brilliant varnishes are also possible.

Your dream instrument should look exactly the way you want it to!







The cabinet and all technical components developed by us are manufactured in Germany according to our specifications.

The final assembly of your SEMPRA is done by hand in the BÖHM organ manufactory. Special designs are also possible within the scope of what is feasible: here a second sill or another piston, there an audio output more... You will be surprised by the range of possibilities. An individuality that no other brand can offer you.



If we can be accused of one thing, it's that we are sometimes too modest in emphasizing the exclusive advantages of our instruments with enough vehemence. Making a marketing "elephant" out of every feature "mosquito" - that's not our thing! Many things that are praised elsewhere as great achievements are taken for granted at SEMPRA.

But of course we want you to know what special advantages you can find on the market exclusively with SEMPRA organs and keyboards from BÖHM. And that is so much that we can only mention the most important features here.

Read on the following pages, which unique possibilities and features of the SEMPRA organs and keyboards make them so unique. You will recognise why these innovative instruments offer you the BEST for your music!

**ULTRA FAST** - The fastest start time of all current organs: Your SEMPRA is ready to play in about 5 seconds! And you will experience the same top performance throughout the entire playing operation: SEMPRA is not (!) another Windows PC organ, but breaks new ground from the basics: A CPU specially optimized for demanding real-time applications, industry-standard hardware and the **SEMPRA Realtime Performance operating system** developed by BÖHM control everything lightning fast and reliably.

**EASY TO USE** - The completely redesigned, easy-to-understand user interface and intuitive display menus make playing the SEMPRA a pure pleasure. Operate your organ in the way YOU prefer. Nearly all functions can be operated either directly via the **razor-sharp, true-to-view 9" Wide View Touch Display** (IPS technology) or via the buttons around the display or the data wheel.

**3D PRESETS** - The completely new and innovative registration system of SEMPRA: No more searching for your favorite settings! Up to 6 total registrations for one title are stored as SONG Presets (total settings incl. sounds, volumes, style or playback accompaniment, arpeggiator settings, etc.) clearly arranged in the so-called **SONGS**.





You can also combine these SONGS in **Themes** and **Albums** individually according to your wishes and call them up again later as quick as a flash.

In order to get to the desired registration even faster, there are numerous useful **sorting functions** for your SONG list.

The **more than 2700 factory registrations** in SEMPRA 2.0 have been newly created especially for this version and sound perfect:

**SEMPRA Style-Basics:** For each of the styles you will find 4 registration suggestions (One-Touch-Presets). So the sound of the style is right immediately and you can indulge yourself while playing.

**SEMPRA Sound-Basics:** 168 highly musical basic registrations, which are not title-related but sound-related, serve as sound basics for the simple realization of your own creations.

**SEMPRA SONGS:** The song list with 6 registrations per title. We have selected a very appealing repertoire from the songs most played by our customers - to play directly and as an inexhaustible pool of ideas.

Thanks to the balanced tuning, you can use our factory presets carefree as a basis for your own ideas. Because nothing fits your playing later as perfectly as your own registrations.

Of course, the factory registrations - as far as musically useful - are also already prepared for the interaction with the numerous SEMPRA expansion apps like the Arpeggiator.



**COMBINE SOUNDS WITHOUT LIMITS**

SEMPRA instruments offer you the most extensive registration possibilities of all organs/keyboards on the world market! More than 16 parts for manuals and pedal, including individual parts for solo chord, RealOrgan drawbar organ or MIDI Out are already standard on the "small" SEMPRAs models.

If your SEMPRA is equipped with at least 2 AMADEUS Pro-D sound modules, the number of simultaneously playable parts for manuals/pedal increases up to **31!** On the SEMPRA top models, there are even up to **37** parts that can be combined simultaneously on the manuals or the pedal. That's not enough for you? With the **User Part apps**, you can expand your SEMPRA with **up to 16 additional** freely configurable parts, which you can use as additional keyboard parts on the manuals or pedal, or for special MIDI applications.



For the parts you can individually define numerous playing parameters such as volume, panorama, key zone (split range), dynamic behavior, monophonic or polyphonic playing style, reaction to pitch/modulation or swell, distance (spatial depth), Hawaiian (glide) effect, portamento, freeze (targeted "freezing" of notes of individual instruments via footswitch), etc. Unlimited possibilities for creative arranging, as only SEMPRA can offer you!



The (sound) source of your musical inspiration:

**SEMPRA with AMADEUS Pro-D sound generating and D-MiX audio DSP technology**

More than 1,500 fantastic sounds from solo and ensemble instruments via choirs and synthesizers to organs, basses, percussions and entire orchestra sections are made available to you by the Böhm **AMADEUS Pro-D** sound generation system. And you are the conductor of all these fantastic musicians!

Numerous AMADEUS ART articulation and playing functions give the sounds a special authenticity and offer unique playing and arranging possibilities. **4 effect DSPs per AMADEUS module**, each with **up to 6 effects simultaneously**, create further possibilities.

This comprehensive library can be expanded with numerous sound or sample packages. For example, you would like to play a large church or theater organ on your SEMPRA? Then the sound extensions of the series Böhm - Famous Organs are your choice. Or combine the numerous stops of the Accordion Fascination package to create completely individual accordion sounds. Go to Hollywood with the especially elaborately programmed sounds and soundscapes of the **AMADEUS Movie Sound Collection**.



**SOLOCHORD and SEMPRACHORD** - If you are an organ or keyboard player, you are probably familiar with the Solo Chord function: A chord played in the lower manual is linked to the upper manual. So you can play a polyphonic melody with only one finger of the right hand. So far, so good...

But SEMBRA wouldn't be made by BÖHM if there were not some "more": Each keyboard part of SEMBRA can be switched to a Solo Chord instrument. This makes it possible, for example, to play several sounds simultaneously with different Solo Chord types (there is a choice of 24 different harmony types) on any manual sections.

The sensational new **SempraChord** in SEMBRA version 2.0 goes even further. If you register several Solo Chord instruments (up to 4) with the same Solo Chord type,

the individual voices (notes) of the harmony are distributed among these parts/instruments. Each SempraChord instrument involved plays its own voice and thus becomes an independent soloist.

Each instrument can of course be individually occupied and arranged with the available part playing parameters. Only in this way does the Solo Chord become a truly realistic ensemble playing of several individual "musicians"! You only play the melody with one finger, your SempraChord ensemble follows you "on the dot" or on the key... The sound experience is perfect: Your registration becomes a real orchestra through SempraChord!

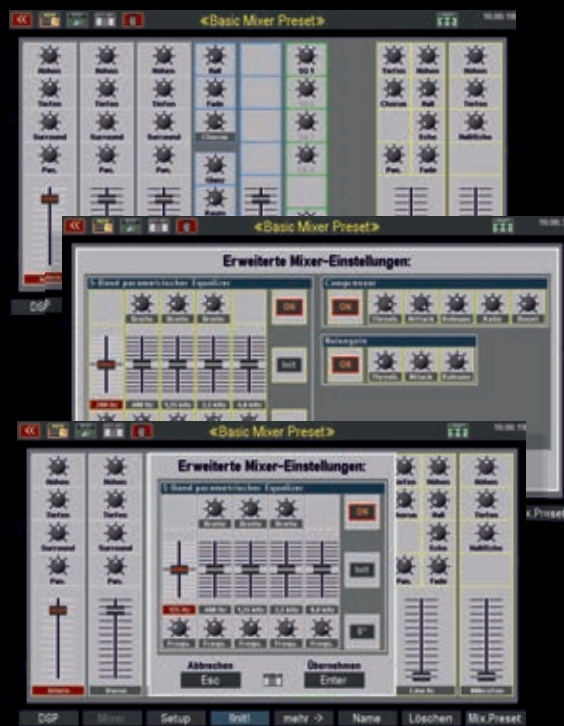
In the factory registrations you will find numerous sonorous examples for SempraChord. But you can also create your own SempraChord ensembles very quickly. A fantastic playing aid!

With the AMADEUS Sound Editor, you can get creative yourself and create your own AMADEUS sounds, which you can shape using numerous parameters, play functions and DSP effects.

The wonderful, warm, crystal-clear sound of the AMADEUS Pro-D tone generation is already proverbial.

In addition to AMADEUS, the special sound experience is also due to the **D-MiX studio preamplifier** with the latest audio processor technology. In the fully digital mixing console, you adjust the overall sound to your liking and easily save your "sound" as a mixer preset. Apps like the partially parametric **5-band EQ** for each input and output, the **D-MiX Rotary** - a fully editable rotor cabinet - or even true quadrophony with four output channels and free positioning of the sound modules and D-MiX effects provide further fantastic sound possibilities.

All those who sing along with their music will also enjoy the **extensive microphone section** with its own reverb and echo effects as well as up to 4-voice harmonizer in studio quality.





**RealOrgan** - Probably the most versatile drawbar organ section on the market with all legendary organ types and sensational sound - this is the SEMPRE RealOrgan. Modern **physical modeling** technology makes this possible: the RealOrgan offers an extremely realistic simulation of the typical tonewheel sound in all its details, and that on **up to 15 (!) choirs**, depending on the organ type.

Depending on the SEMPRE model, you can adjust your sound with **sets of up to 12 drawbars** (including mixture bars for the additional foot positions) or just as quickly by gesture control via the display. All important organ functions such as percussion, vibrato/chorus and of course the rotary effect can be found on corresponding buttons in direct access. Your SONG presets "remember" even the most complex tone wheel settings in detail.

If your SEMPRE also has the **D-MiX Rotary**, you can even use it with the RealOrgan to mix two individually adjustable Rotary effects. Limitless possibilities to find your individual favorite rotary sound. With the RealOrgan extensions you can experience the characteristic drawbar sounds of the legendary analog Dr. Boehm and other famous organs - from Chicago to Hunsrück - on your SEMPRE.

The exact foot positions with the original repetitions and of course the typical Leslie, phasing rotor and vibrato emulations as well as full percussions over all foot positions, if applicable, bring the sounds of the golden organ era back to life. For each organ type there are 16 preset settings true to the style.





**GST STYLE Accompaniment** - With the highly musical Style section of SEMPRA you are always in good company. And your backing band will now be even better: The most important instruments in a rhythm section are undoubtedly the guitars. The sensational **Guitar Strumming Technology (GST)**, now newly developed by Böhm, can be found exclusively in SEMPRA organs and keyboards.

All guitar tracks in the factory styles do exactly what real guitarists play on their instruments. This creates **realistic runs or chord strummings**, because all guitar tracks play just like the real instruments on their 6 strings. Even upstrokes and downstrokes are taken into account, as well as the slight delays caused by strumming the strings one after the other when playing chords, open or barré fingerings, and power chords. Complex algorithms and over 900 fingerings ensure realistic guitar playing in the style tracks. GST provides the decisive difference to the conventional accompaniment automats of other organs and keyboards.

Your SEMPRA Accompaniment Orchestra offers you already "ex works" a selection of more than 260 perfectly arranged GST accompaniment styles with up to 8 tracks each (drums, bass, combo 1 - 3), 4 variations, 4 intros and endings, 10 (!) fill-ins, 1 break and 1 bridge per style. For each factory style you will find 4 musically perfectly matched Style Basic registrations (One-Touch-Presets). All accompaniment groups and also all percussion instrument groups can be switched on and off directly at any time via mute buttons. This provides variety in the style accompaniment.

All styles can be edited in the SEMPRA Style Editor in a particularly simple, flexible and lightning-fast manner, up to and including the recording of new tracks or supplementary figures to the existing tracks. With various optional style packages, you can extensively expand the style library of your SEMPRA. And of course, matching Style Basic registrations are always included. In addition, you can import styles in YAMAHA® format (up to Tyros 5/Genos) and adapt them instantly.

GST - REAL GUITARS ACCOMPANY YOU



***GST - Guitar Strumming Technology***

**SEMPRA Arpeggiator** - a limitless creative tool and in this form unique in organ building! The possibilities go far beyond a conventional arpeggiator, as you know it for example from a synthesizer. The arpeggiator is virtually a **second accompaniment device** in the SEMPra:

The arpeggio function supports you with an always "fitting" accompaniment by the arpeggiator - perfectly synchronized to the current rhythm style. And it can do much more: In addition to typical arpeggios, **sequences** and even **guitar melodies (runs)** or typical **guitar chord figures** can be played. The arpeggiator also benefits from the new **GST Guitar Strumming technology** and thus provides an inspiring authenticity.

Up to **4 templates** (the arpeggio, sequence or GST Guitar patterns) per arpeggio can be switched on and off separately via buttons or the new, expanded basic screen. Interactive control via the manuals is also possible. The arpeggiator will then only play when you actually grab buttons. This way you can control effective interjections, e.g. brass riffs, harp glissandi and much more "to the point".

Of course, you can edit the arpeggio templates in a variety of ways, specifying instrumentation and playing parameters individually. With the Arpeggiator you get a library with numerous templates on USB stick, which you can use for your own arpeggios.

With the optional app **Easy Editor Arpeggio** you have an extensive construction kit for arpeggios and also styles(!) at your disposal! You can use it to import existing templates into style tracks, or vice versa simply export a track of a style pattern as a template to a USB stick. You can then use this track as a template in an arpeggio or even in another style!

You can also create your own templates for your arpeggios using the record function in the Style Editor. You can even import multi-pad files in Yamaha® format as templates into the Arpeggiator.



So that you can start playing right away, our musicians have thoroughly reworked the factory registrations and combined them with arpeggios where musically useful. With the Arpeggiator you get a comprehensive package with ready-to-play SONG presets including arpeggio accompaniment.

The musical range of the Arpeggiator is almost limitless. We promise you: This fascinating extension will not let you go again!

**SEMPRA SIDELINE** - The Sideline app expands your SEMBRA 2.0 with an easy-to-use yet flexible recorder: Record your playing on **up to 6 tracks** (upper, lower left, lower right, solo, pedal, control panel). All manuals, the pedal and also the operating steps like SONG and preset changes, volume and tempo changes etc. during playing can be recorded.

During playback, you can switch the recorded tracks on and off as you like. For example, turn off the upper manual in the sideline and play your melody yourself while letting the other tracks accompany you. All operating steps are also performed fully automatically by the Sideline according to the previous recording. You can delete recordings or parts of them individually or in all tracks, or add to an already existing sideline (overdub).

The sidelines are saved and recalled with the corresponding SONGs. A fascinating playing aid - and so easy to use!



**INTERACTIVE PLAYBACKS** - Truly creative organ playing requires keeping control over sounds, melodies and accompaniments at all times. The mindless running of pre-recorded audio files or "waves" is practically out of the question!

Midifile sequences, on the other hand, offer you as a player the freedom to adapt such accompaniments individually to your arrangements. SEMBRA offers a new dimension of creativity when playing with midifile playbacks: For the first time, **you can make music with midifiles just as flexibly as with styles!**

Divide your midifile into up to 6 musical sections (e.g. for intro, verse, chorus, ending...) in a flash, which you can then call up directly via the corresponding style pattern buttons while playing. Thus, the midifile as an interactive playback in the SEMBRA becomes a perfect, song-related, but still flexible in the sequence controllable accompaniment.

Of course, you can adjust the instrumentation of your playbacks to your arrangement, mute tracks you don't need, etc.

You save your playback archive in the same way as the other accompaniments in style-related categories or groups and call them up just as quickly. In addition, you can of course link the playbacks to the SONG registrations. In the **albums** you also have an automatic SongPlayer at your disposal.

Playing with midifile playbacks can be this creative!



**Individual User Accounts** - Another exclusive SEMPRA feature - extremely valuable and not to be found anywhere else:

You can create and use multiple user accounts on your instrument. For example, you share your instrument with your partner? Or the instrument is used alternately by several players in a band or in church? No problem! Each user simply creates his or her own user account, in which "his" or "her" personal SEMPRA is then available.

In the user account all data (factory and user data) can be installed and managed individually. User data that is stored on a USB stick is automatically saved for each account. This way, all data always remains safely separated and nothing can be accidentally overwritten and lost.

Even if you only use your instrument on your own, the user accounts are a valuable help: create a test account, for example, in which you can try around to your heart's content without changing your valuable data in the main account. Once you have found your settings, you can of course transfer them to your main account via USB stick. Or you can simply delete the test account when it is no longer needed.

You can create new, empty accounts, or duplicate existing accounts with all their contents. It is also possible to export an account to a USB stick. If you then plug this stick into a friend's SEMPRA, for example, you can access your account there and play with it on the "foreign" organ. Everything is then exactly the same as on your own instrument!

This is playing comfort á la SEMPRA!





# SEMPRA - the most versatile organ and keyboard series on the market:

You have the choice: From 9 SEMPRA models in 6 variations. From over 25 solid wood variants - or real woods, wood or lacquer finishes. Between versions with or without built-in speaker system, with 17-, 25- or even 30 (!) keys pedals and optionally also with accordion bass keyboard or chromatic button keyboard (B- or C-handle) - the perfect SEMPRA for all accordion players! No other manufacturer offers more variety of models!

Also your SEMPRA is made in our organ manufactory in valuable handwork - individually for you. Let us make your musical dream come true! On the following pages we present all SEMPRA models.

SEMPRA SE10 2.0 GST



**ONLY TRUE INNOVATION PROVIDES THE BEST FOR YOUR MUSIC**

**Choose your SEMPRA:**



SEMPRA SE10 2.0 GST  
chromatic



SEMPRA SE10 DB 2.0 GST



SEMPRA SE20 2.0 GST



SEMPRA SE40 2.0 GST



SEMPRA SE60 2.0 GST



SEMPRA SE70 2.0 GST



SEMPRA SE80 2.0 GST



SEMPRA SE100 2.0 GST



SEMPRA SE10 2.0 GST

# SEMPRA SE10 2.0 GST



# SEMPRA SE10 DB 2.0 GST





## You can just play keyboard.... or SEMPRA!

The SE10 keyboards combine all the musical power of the SEMPRA 2.0 generation in three compact, single-manual instruments. Choose your version:

### SEMPRA SE10 2.0 GST

Piano version with 76 weighted keys.

### SEMPRA SE10 DB 2.0 GST

Organ version with 61 weighted keys and 12(!)-way drawbar system. This version includes the sensational RealOrgan drawbar sound module (optional on the 76-key version), which allows you to play drawbar organs with up to 15 choirs.

### SE10 / 10 DB Chromatic 2.0 GST

The SE10 keyboard for accordion players: Chromatic chord keyboard (Lower) and discant keyboard (Upper), optionally in C- or B-key version.

The sonic heart of the SE10 keyboards is also the superior BÖHM **Amadeus Pro-D** sound technology with the **D-MiX studio preamplifier**. Of course, the SE10 keyboards also offer all the advantages of the new **SEMPRA version 2.0** with **GST Guitar Strumming technology**.

To get you started right away, a SONG list with **more than 2,700 ready-made registrations** is already installed on the SEMPRA SE10 in the basic configuration. This includes registrations for all important sound categories (Sound Basics) and hundreds of SONGs with 6 individual presets each for many well-known pieces of music (Semptra songs). For each style of the GST Accompaniment Orchestra in the SE10 there are also 4 matching registrations (Style Basics = One Touch Registrations).

With the sensational **SemptraChord** you play realistic polyphonic ensemble movements with only one finger of the right hand. This makes playing fun from the very first moment.

You are accompanied by the highly musical **Guitar Strumming (GST) style accompaniment** with ultra-realistic guitar tracks or by interactively controllable midifile playbacks. Organize your registrations into albums using the versatile SONG player for your playbacks.

Additional function apps such as the SEMPRA Arpeggiator or the Sideline recording function, various style, sound and preset packages and many other options allow you to further enhance the musical potential of your SEMPRA keyboard.

We supply a wide range of accessories for the SEMPRA SE10 keyboards, such as stands, solid wood bases with speaker system, pedals, etc.

Of course you can also choose between different lacquer finishes for the panels and wood or lacquer finishes for the solid wood side panels of the SEMPRA keyboards.

SEMPRA SE10 2.0 GST  
Chromatic



SEMPRA SE20 2.0 GST

# SEMPRA SE20 2.0 GST





The compact, two-manual **SEMPRA SE 20**, now of course also in the new **2.0 GST** version, is available as an easy-to-transport keyboard organ **SE20 stage** or as a complete standalone model **SEMPRA SE 20 home** with solid wood stand and powerful multi-way speaker system. And because only the best is good enough for us, our built-in speaker systems are powered by a Class-D amplifier from the Danish high-end manufacturer **Bang&Olufsen** (2 x 250 watts). You can hear the difference!

The SEMPRA SE20 2.0 GST is the ideal organ model for the discerning entertainer, but of course also for anyone who prefers a particularly compact instrument at home without having to sacrifice the full power of SEMPRA technology. By the way, the SE 20 can also be equipped with a **25-key pedalboard**.

The **Amadeus Pro-D** sound technology and the **D-MiX** preamp in studio quality provide an exciting sound experience. Of course, all SE20 models offer the benefits of **SEMPRA version 2.0** and the sensational **GST Guitar Strumming** technology!

An extensive library with more than 2,500 ready-made 3-D SONG presets for sounds, styles (one-touch registrations) and hundreds of well-known music pieces is already pre-installed on the SEMPRA SE20.

The sensational SempraChord lets you play realistic polyphonic ensemble phrases with just one finger of your right hand. The SE20's GST Styleplayer supports your playing with a sonorous accompaniment band.

You can further enhance the musical potential of the SE20 via additional function apps, style, sound and preset packages. For example, get the Arpeggiator as a creative second accompaniment machine in your SE20, or the Sideline function, with which you can record your play including the operating steps, play back and of course also play along.

If you love particularly elaborate sound mixes, you can equip your SEMPRA SE20 with a **second AMADEUS Pro-D sound module** and then combine up to 8 instruments plus solo chord plus drawbar organ per (!) manual, of course also freely distributable via individual split zones and each individually configurable via many parameters.

The SE20 stage is already prepared for the installation of the SEMPRA RealOrgan, with the SE20 home it is even part of the standard equipment. Probably never before has a drawbar organ been so sonorous and versatile. Several organ types are already available in the basic version, and further types, including many legendary tonewheel and electronic organs, can be added via apps. Each of these up to 15-course organs is recreated down to the last detail (generator, foot positions, phasing rotor, full percussion, etc.).

Even on the "smallest" SEMPRA organ model, all wooden parts (side panels and underframe as well as bench) are made of valuable solid wood or even real wood on request. Quality down to the last detail.



# SEMPRA SE40 2.0 GST







A top-of-the-range two-manual organ, of course with all the advantages of the new **SEMPRA 2.0 version** and the new **GST Guitar Strumming technology**. The SEMPRA SE40 2.0 GST already bears witness through its extraordinary design to how limitlessly musical it is.

The SEMPRA SE40 is a joy to the eyes and ears in the highest quality finish. As with all Böhm instruments, the cabinet is made of valuable solid or real wood. Stains in almost any wood color, also silk-matt black or white, but also individual brilliant varnishes in your desired color are possible.

For the SEMPRA SE40, you can choose between a 17-key pedal or a 25-key full pedal. In the good tradition of Böhm, the pedals are of course also polyphonic and velocity sensitive.

The innovative **SEMPRA REALTIME PERFORMANCE** system makes the SEMPRA SE40 one of the most exceptional organs in its class.

All the possibilities of the SEMPRA 2.0 version with its outstanding musicality can be fully exploited on this instrument.

The unrivaled silky, brilliant and full sound of the **AMADEUS Pro-D** tone generation is of course also one of the impressive features of this organ.

The integrated multi-way speaker system of the **SE40 home edition** with a powerful Bang&Olufsen stereo digital power amplifier and additional tweeter in the console brings out the fullness of the sound.

On request, the SEMPRA SE40 is also available in the **concert edition** without built-in speakers and amplifier.

The SEMPRA SE40 also looks good on the back. A flap on the top hides all the cable connections. And you don't have to disconnect these cables even if you ever want to transport your SE40. A **solid plug-in connector** ensures a reliable connection of all cables between the upper and lower parts. For transport, you only need to pull off the upper part or put it back on again. Opening the upper part and "pulling strings" is not necessary with Böhm!

It is also such details that make the difference...

# SEMPRA SE60 2.0 GST





## Even more playing possibilities due to 3 manuals!

The **SEMPRA SE60 2.0 GST** offers the entire spectrum of the **SEMPRA 2.0** generation with **GST- Guitar Strumming Technology** on three manuals. With this we continue a good tradition of our company, because already the first three-manual electronic organ in Europe more than 50 years ago was a **BÖHM** organ.

The dynamic design gives this valuable instrument a representative, elegant appearance and makes it hardly guess how compact this concert organ really is.

The **SEMPRA SE60** is the most affordable three-manual universal organ on the market, offering playing possibilities, performance and sound quality that you won't find anywhere else, even at a much higher price.

The **SE60** includes all the benefits of the **SEMPRA SE40**. Even the **SEMPRA SE60** is available with either a 25-key full pedal or a 17-key pedal and either as **home edition** with a built-in speaker/amplifier system with a powerful original **Bang&Olufsen** power amplifier (2 x 250 watts) or as **concert edition** without speakers and amplifier.

You will quickly come to appreciate the significantly expanded playing possibilities offered by the **SE60**'s solo manual. The additional manual allows you to set further sound accents that make your music even more varied.

The 3rd manual is especially interesting for playing classical organ literature. If you equip your **SE60** with the church organ package from the **Böhm - Famous Organs** series, many a large pipe organ will turn green with envy.



Play great organ works on the **SEMPRA SE60**, the next moment a big band, a symphony orchestra or even modern dance beats with sparkling sound cascades from the **SEMPRA Arpeggiator** - a playing and sound experience without equal!

How convenient that you can immediately record your playing with the **Sideline** app and then play it back. Your control actions are also recorded.

Then simply switch off the manual tracks during playback, for example, and play yourself again. The **Sideline** then takes care of the entire operating sequence fully automatically - a fantastic playing aid, especially for more demanding arrangements. You can fully concentrate on your playing.

The Böhm **SEMPRA SE60 2.0 GST** offers pure musical fascination under your hands (and feet)!

SEMPRA SE70 2.0 GST

# SEMPRA SE70 2.0 GST





## Your personal dream orchestra...

...has a name: **SEMPRA SE70 2.0 GST**: The "small" big organ with **full drawbar panel** (12 + 10 + 6 choir RealOrgan drawbars), 2 or even more **AMADEUS Pro-D** sound modules, **D-MiX** preamp, pre-installed extensive **church and theater organ sounds and registrations**, real **manual couplers**, **GST style accompaniment** with new guitar strumming technology, over 3,500 registrations, **AMADEUS Sound Editor**, and...and...and....

Never before has there been such a versatile organ in such a compact cabinet. The SEMPRA SE70 offers almost the same playing and sound possibilities as the large full organ SEMPRA SE80 and of course all the advantages of the new **SEMPRA Version 2.0 GST**. The cabinet is **hardly larger than** that of the SE40. And the SEMPRA SE70 can **be equipped** in the same way as an SE80, with regard to **the number of simultaneously playable sounds per manual or in the pedal**, the number of sound modules, quadrophony, function extensions, sound and style packages, etc.

Like all Böhm organs, the SEMPRA SE70 is available in different solid wood or real wood versions. Brilliant lacquer finishes are also possible. Because for such an outstanding instrument, the the outer frame should of course also be right.

In the **home edition**, the SEMPRA Se70 includes an active multi-way loudspeaker system with original Bang & Olufsen amplifier technology. The powerful loudspeakers in the stand and **the additional tweeters in the panel** ensure for an exhilarating sound experience.

In the **concert edition** the SEMPRA SE70 2.0 GST is also available without integrated speakers and amplifier for operation with external amplifiers or active speakers.

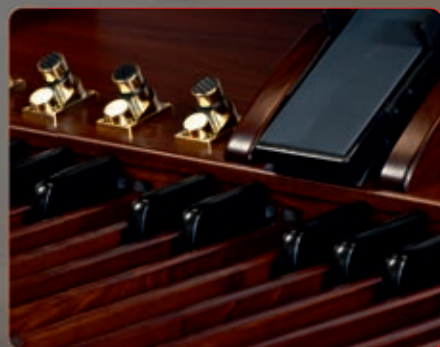
By default, the SEMPRA SE70 2.0 GST is equipped with a 17-key pedal. However, the organ can also be supplied with a 25-key full pedalboard.

A full drawbar profile and the extended control panel layout provide a special playing comfort and allow convenient direct access to the sound action, even while playing.

Never before has it been so easy to master such a large organ. The innovative SEMPRA 2.0 GST technology makes it possible!



# SEMPRA SE80 2.0 GST





Is it the outstanding musical performance or the extraordinary design that makes the **SEMPRA SE80 2.0 GST** so unique? An exclusive designer cabinet in valuable solid wood finish, which for many organ fans is one of the most beautiful of all, a full drawbar profile with 12 + 10 + 6 RealOrgan drawbars, **3 AMADEUS Pro-D sound modules**, D-MiX preamplifier technology with quadrophonic preparation, unique playing possibilities through up to **12 sounds + drawbars per (!) manual**, real manual couplers and of course SEMPRA 2.0 and the versatile GST accompaniment section with the fascinating **Guitar Strumming technology** are just a few plus points of this exclusive organ. We are the only manufacturer to offer our two top models SEMPRA SE80 and SE100 with a **30-key full pedal**. So you can also play sacred music without any restrictions on these dream organs.

The innovative SEMPRA 2.0 GST technology makes the operation of even such a large concert organ child's play. Experience the fascination of this organ, whenever you play on your Böhm SEMPRA SE80 2.0 GST. The playing possibilities and the special sound experience are so extraordinary that you will find no comparable other organ of this class on the market.

An unique attribute of the sensational Böhm D-MiX Audio-technology: If you wish, you can equip the D-MiX preamp with true quadraphony. This expansion app distributes your music to four separate playback channels. You sit in the middle of your own orchestra - a sound experience that cannot be described! Each AMADEUS sound module and the D-MiX effects can be individually positioned in the Quadro base. You "bathe" in the sound. This is just one of the many SEMPRA innovations in organ building that you will find exclusively on Böhm instruments.

We would be happy to advise you on suitable additional speakers for the rear channels.

Or revive the legendary drawbar sounds of many famous vintage organs with the fantastic SEMPRA RealOrgan. Böhm has fulfilled a dream for many organists. Because an organ is first and foremost an organ. And you have to hear that!

Of course, the sound packages **CLASSIC COMPLETE (church organ)** and **THEATRE ORGAN**, which are optional for the "smaller" Böhm models, are standard equipment for the SEMPRA SE80. Thus, the SE80 becomes a great pipe or theater organ under your hands.

You can always expect top performance from the SEMPRA SE80 2.0 GST, no matter what music you play on this dream organ.



SEMPRA SE100-2.0 GST

# SEMPRA SE100 2.0 GST







If you place the highest demands on a musical instrument and compromise is not your thing, then the Böhm **SEMPRA SE100 2.0 GST** is the instrument of your choice! Following our long tradition of superlatives in organ building, we present with the SEMPRA SE100 2.0 GST a truly royal instrument. This organ is unique in every detail. Of course, the SE100 also has all the advantages of the new **SEMPRA 2.0 version** and the **GST Guitar Strumming technology**.

The valuable solid wood case houses three high-quality weighted keyboards, with as many as 76 keys available to you in the lower manual. So you can play piano with both hands or make even more effective use of the SEMPRA SE100's unique split and layer capabilities. And with the 30-key full pedal, you can also perform church organ literature without limitations.

With this organ, even the most demanding player is optimally equipped for the sonorous interpretation of any kind of music. You can play up to 12 instruments plus RealOrgan drawbars (and even more sounds via optional user parts if required) on the manuals and pedal. You can control the SEMPRA SE100 with the innovative 3-D presets at the touch of a button.

Choose from over 3,500 registrations that our musicians have lovingly crafted or arrange yourself "without limits". The fabulous **GST accompaniment** provides a brilliant background band with realistic "live" guitars. Or switch on the arpeggiator for sound cascades, brass interjections or dreamy piano or guitar runs.

Unique in organ building is the **quadrophonic multi-way loudspeaker system** of the SE100 home edition with no less than 2 Bang&Olufsen stereo power amplifiers and four channels. It converts the sounds processed by the D-MiX preamplifier system into a room-filling sound experience. The 4 AMADEUS Pro-D sound modules and the D-MiX effects can be freely distributed between the four playback channels. We will be happy to advise you on suitable external loudspeaker systems for an even broader effect of the quadrophonic playback.

On request, the **SEMPRA SE100 2.0 GST** is also available in the **concert edition** without built-in speakers and power amplifier. Even with this version, the quadrophonic can be fully used if you connect 2 x 2 external active speakers.

Enjoy the exhilarating sound world of the Böhm **SEMPRA SE100 2.0 GST**. We promise you a playing experience that will make you forget what you have known so far.

## What else you should know about SEMBRA:

### The technology

- **SEMPRA 2.0 REALTIME PERFORMANCE** operating system, Industry standard processor hardware (no Windows or Linux PC). System startup in less than 5 seconds. Lightning-fast and reliable response to all operating steps.
- Extremely simple, clear operation: Almost all functions can be accessed alternatively via the lightning-fast, **viewable 9" touch display** or via buttons and controls.
- **Expandability:** New sounds, accompaniments, registrations and also function expansions can be installed or activated via additional **apps** and software packages.
- **Future-proof hardware:** Thanks to modular design, hardware updates to the latest technologies are possible even after years.
- **User accounts:** Multiple user accounts can be created. Each account can be individually filled and configured with factory and user data.
- A user account contains virtually a complete SEMBRA.
- User accounts can be secured with PIN. Export to USB stick possible to use the account on other SEMBRA organs directly from the stick.

- **Clear BMC (Böhm Music Computer) menu** for individual settings in all areas of the instrument. Control/data entry via datawheel or numerically via number/letter button group.
- **USB keyboard** can be connected for entering names etc.
- **Memory/USB:** Internal memory in latest flash technology, factory and user data completely separated. Everything can be changed individually, no factory data can be lost.
- **USB compatibility:** Depending on the model, up to 3 USB ports for USB memory sticks integrated in the panel, USB hubs can also be connected.  
**Data transfer to/from USB:** Simple USB management menu for loading/installing or saving data from/to USB stick.
- **Secure data management**, separated by user accounts / data types. No accidental overwriting of files already on the stick.

### Unrivalled versatility of playing and registration functions

- **Many individual playing parameters adjustable per part:** Key-Zone (key range), velocity (range and individual dynamic curve), volume, panorama, reverb and chorus intensity (D-MiX master effects), fine tuning,
- Transpose/octave, polyphonic/monophonic playing (different modes), sustain yes/no, portamento mode and time, submixer assignment (volume control),
- Pitch yes/no and control range, controller assignment for modulation wheel (each part has its own individual controller selectable), Hawaii (glide) effect with different modes and control ranges (also tempo-synchronous), individual swell control (negative control also adjustable),
- distance (positioning in the spatial depth) and much more.
- **Memory** (hold) individually switchable per part.
- **Freeze** function selectable per part (controllable via foot switch): Currently played notes of a part are held (frozen) as long as Freeze is activated. No (further) notes are played on the respective parts as long as Freeze is activated. The remaining parts can be played normally.
- All part options can be saved individually in the SONG presets. Individual parts can also be removed from the preset management.
- 





- **Extensive key split functions**  
on all manuals and also on the pedal: Upper and lower manual can be split directly into left and right sections via split button, each with its own parts. Individual keyboard zones can be set in the parts.
- **Global split point in the Lower manual:**  
Set the split point to the desired key, all presets follow automatically.  
This way you can determine yourself in which area you play e.g. the accompaniment and which part of the lower manual is available to you e.g. for interludes and melodies. The registration in the left keyboard area is automatically octavated correctly for the accompaniment if necessary. The global lower split can also be stored in the SONG-presets if desired.
- **Real manual coupling** (optional app with SE20...SE60, standard with SEMBRA SE70...SE100): These coupling functions allow you to switch the manuals or the pedal in several variations, just like on a large pipe organ, and thus play the registrations of two works/manuals on one manual or on the pedal. Highly interesting also for "large" orchestral arrangements!
- **Manual preset buttons** for quick recall of SONG presets without having to take your hands off the manuals.

The screenshot displays the SEMBRA organ console interface. The main screen shows the 'Upper right 1' manual settings, including 'Brass 1' and 'Trombone soft' parts. A 'Part-Optionen' dialog box is open, showing various settings for a part, such as 'von Taste' (C 3-000), 'bis Taste' (g 6-127), and 'Modus' (filtern). The dialog box also includes a table of settings for 'Submix-Regler' and 'Sound-Controller (Mod.): Modulation (01)'. The background shows the 'Upper left 3' manual settings, including 'Choir Ooh stereo' and 'Emu.Pad stereo' parts.

Submix-Regler		Upper r	
von Taste	C 3-000	Submix-Regler	Upper r
bis Taste	g 6-127	Portamento-Zeit	30
Modus	filtern	Sound-Controller (Mod.):	Modulation (01)
feste Note	----	Min-Wert	0
Pitch-Bereich	2	Max-Wert	126
Pitch	ja	Mono-Taste	höchste
Sustain	ja	Mono-Retrigger	ja
Aftertouch	nein	Hawaii-Effekt	aus
Transponierung	ja	Hawaii-Zeit	1,7 s
		Schweller-Anteil	100
		Distanz	0
Abbrechen Esc		Übernehmen Enter	

## SEMPRA style player with GST technology

- More than 260 styles in 4 variations, patterns per style: 4 x Intro, 4 x Ending, 10 (!) x Fill-In, Break, Bridge.
- Dedicated minor and seventh tracks where musically useful.
- Sensational **Guitar Strumming Technology (GST)** - exclusive to SEMPRA: The guitar tracks of the styles play runs and chord strummings exactly like real guitars on their 6 strings. Even the natural delay of the individual strings during attack and release is taken into account! **Complex algorithms and more than 900 guitar fingerings** stored in the system provide this extremely realistic guitar accompaniment in the styles. Even different fingerings like open chords, power chord or barré fingerings are taken into account.
- Sync Start/Stop, Ritardando function, Fade out/in.
- Tempo adjustable via +/- buttons or data wheel. Default tempo per style (changeable via Style Editor), Tap Tempo and Tempo Hold functions.

- Accompaniment controllable from any manual area or pedal.
- Various full fingered and single fingered chord modes.
- Single finger accompaniment with **polyphonic background harmonization** via registered lower parts (similar to SempraChord) for even more sound fullness.
- **SEMPRA Organist mode:**  
The tracks of the "Combo 1" group only play notes that are actually fingered in the chord and not the normal style score.
- The automatic bass can be controlled by the bass pedal: If a note in the pedal is pressed, the automatic bass will only play that note (in rhythm with its style score) until the note is released.
- **Bass functions:** Manual Bass, Lowest Bass (the lowest fretted chord note is used as the bass root).

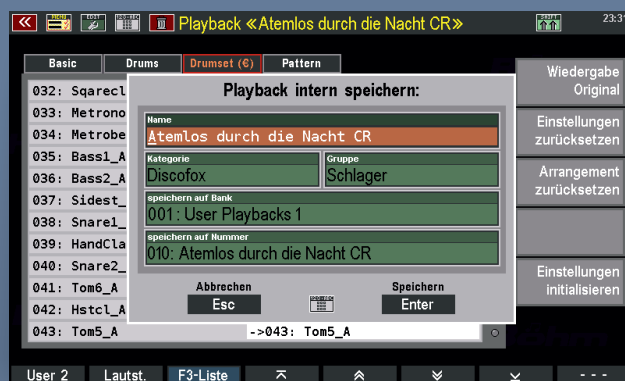




- **Slash chords** can be played directly with the desired bass notes: When fingering at least 4 chord notes, the note that is doubled is (e.g. E - G - C - E) is defined as the bass root.
- Arranger combo groups and individual drum instrument groups can be switched on and off directly via mute buttons.
- Versatile, easy-to-use style editor.
- Style patterns can be directly supplemented with additional notes or completely re-recorded via the recording function.
- Existing patterns can be used as templates for new patterns.
- Up to 1,024 user styles can be saved per user account.
- Direct loading/conversion of styles in Yamaha® format (up to Tyros5/Genos).
- **Easy Editor Styles** (optional app): flexible adjustment of all drum instruments via up to 2 user drum kits per (!) style, various adjustment functions for dynamics, volumes, transposing of pattern tracks, etc.

## INTERACTIVE PLAYBACKS (Midifiles)

- Accompany yourself on the SEMPRA with midifiles just as flexibly as with styles: Midifiles can be loaded as so-called playbacks and saved and used as their own accompaniment type.
- 1,024 memory locations for user playbacks.
- Versatile, easy-to-use **playback editor** for adjusting instrumentation and other playing parameters.
- With existing app **Easy Editor Styles**: flexible adjustment of all drum instruments via up to 2 user drum kits per (!) playback.
- Playbacks can be divided into up to 6 sections via markers, which can be called up during playing via the style pattern buttons (INTRO, VAR., BREAK etc.). Playbacks can thus be controlled interactively during playback, just like a style.
- Flexible **Song Player** for playbacks integrated in the ALBUM function for SONG registrations.
- Playbacks can be exported as midifiles to be able to edit them e.g. in an external sequencer (Cubase, etc...).



## SEMPRA Arpeggiator with GST technology

(optional app)

- Much more than a simple arpeggiator. Effectively a second, versatile accompaniment section in the SEMPRA.
- Plays not only typical pearly arpeggios but also progressive synthesizer sequences and even drum loops.
- The arpeggiator plays independently, but always perfectly in sync with the style player.



- Up to **4 individual patterns (templates) per arpeggio**, directly switchable via arpeggio button group or extended basic screen in the display. 4 template types: Arpeggio (plays the played notes according to the rules stored in the template, different patterns for 1 to 6 simultaneously played keys possible). Sequence: short sequences, comparable to style pattern tracks. Guitar Run /Guitar Chord: special template types with **GST (Guitar Strumming) technology** for realistic guitar runs and chord strummings also in the arpeggiator.
- Templates can be played as loop or one-shot. Triggering via control buttons or also interactively via the chord manuals for targeted interjections. The arpeggiator only plays when you press the keys. This way you control effective interjections, e.g. brass riffs, harp glissandi and much more.
- 127 arpeggios pre-installed and already integrated in many factory SONG registrations.
- Included: 32 new sounds for the arpeggiator, 12 new styles and a bank with example registrations for the arpeggiator.
- Convenient arpeggio editor for changing instrumentation and playing parameters of the templates and for importing

templates from the library to combine your own user arpeggios from them.

- 1,024 memory spaces for user arpeggios.
- **Easy Editor Arpeggio** (optionale App): Extensive **construction kit for arpeggios and also styles!** Templates can be imported into style tracks or vice versa tracks from style patterns can be exported as templates into the USB library. These templates can then be used via import in arpeggios or also in other styles. Another Böhm template library for creating your own arpeggios is included. Using the record function in the style editor, your own templates can be recorded and exported to the library. Multi-pad files in Yamaha® format can be loaded and exported to the library as templates. The app also includes another package with 128 template patterns.

## SEMPRA SIDELINE (optional app)

- The comfortable record function for the SEMPRA: Record your playing and also the panel actions during playing (sound and preset changes, controller movements, etc.) on up to 6 tracks.
- Individual tracks for each manual or pedal and the panel actions.
- Additional recordings can be made as overdubs on already recorded tracks.



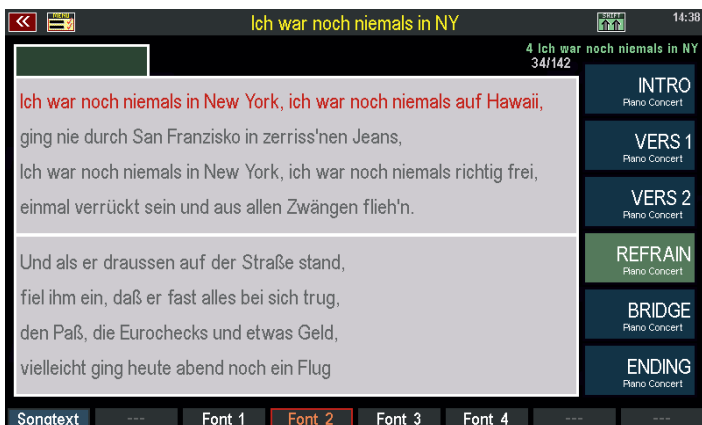


- Automatic linking of the sideline to the SONGs, so that all panel and playing actions start from a defined starting point.
- During playback, the individual tracks can be switched on and off as desired.
- Individual areas (e.g. quarter notes) can be subsequently deleted for selected or all tracks and, for example, re-recorded to correct playing errors.
- Saving of sideline recordings with the SONG.
- Automatic call and optional direct activation of the sideline with the SONG call.

### Karaoke and Lyric Text Display (optional app)

- Synchronized display of karaoke / lyric lyrics from midifiles (interactive playbacks).
- Supports the 5 most popular karaoke formats.
- Specification of preferred karaoke format or song text origin (internal or MIDI) in SONG.
- **Own text files** (ASCII texts in TXT format) can be used for text display.

This allows texts to be displayed even if no midifile accompaniment is used.

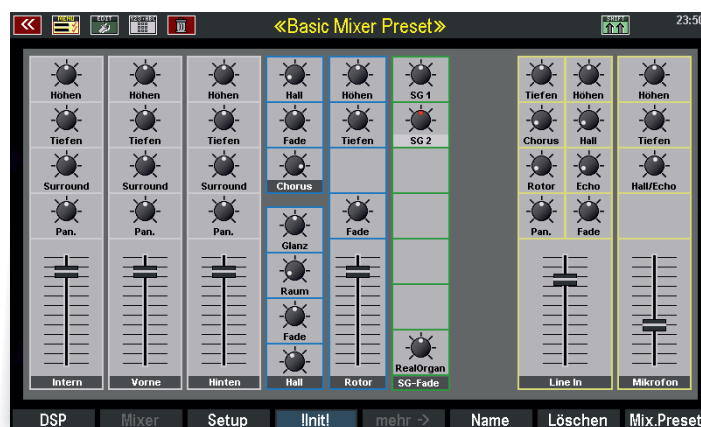


- Saving the corresponding pages of the song text in the SONG presets.
- SONG preset selection is possible from the Lyric screen.
- 4 selectable text fonts available.

## D-MiX mixer/preamp

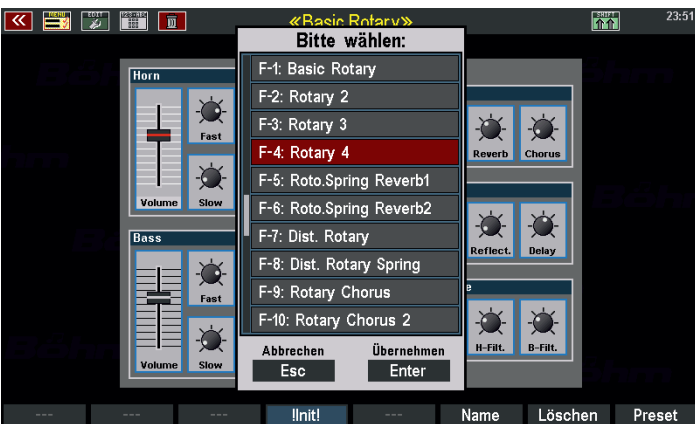
### D-MiX standard equipment:

- Studio-quality preamp and effects section with the latest audio processor technology.
- Digital inputs for all sound modules of the organ (AMADEUS Pro-D and RealOrgan).
- 2 analog inputs (stereo line in, microphone).
- Integrated digital mixer with volume fader, tone control (bass, treble), surround control and panorama control each individually for the internal and external outputs (speaker system/headphones, line out) and the inputs. Thus flexible adjustment of the acoustics e.g. to the room acoustics or the input signals.
- Limiter for all outputs integrated.
- Microphone input with compressor and noise gate.
- Mixer settings can be stored in custom mixer presets.
- Global D-MiX effect DSPs for studio reverb (96 programs), chorus (6 programs), own mixer tracks for the DSP effects in the mixer.
- The selection of the programs is stored in the SONG presets (registrations), the acoustic settings of the DSPs in the mixer presets.
- Proportional swell control for drums, accompaniment, stereo line in (0 dB input).



## D-MiX extension apps

- **Partial parametric 5-band equalizer:** Extends the equalization (bass and treble) by its parameterization (adjustable edge frequencies) and further 3 parametric EQ bands. The equalizer is available separately for each output, the line input and the D-MiX Rotor.
- **D-MiX Rotor DSP with editable programs:** Simulates rotating speakers as an alternative effect device for the Amadeus (organ) sounds, but can also be used for the RealOrgan as an additional rotor effect. Simulates two rotors (bass and treble). Both can be edited in detail and own settings can be stored in up to 32 own rotor presets. 12 factory Rotor presets are already pre-installed. The app includes a sound update for numerous Amadeus organ sounds that automatically use the D-MiX Rotor.



With an existing sound editor, any AMADEUS sounds can be placed on the D-MiX Rotor.

The rotor speed is switchable via a button function directly on the control panel or via foot switch.

If a quadrophonic system is available, the D-MiX Rotor can be positioned anywhere between front and rear.

- The D-MiX Rotor can also be used for the line-in input.
- **Real Quadrophony** (standard on Se100, optional for SE70/80): Unique in organ building: 4 output channels (2 x front, 2 rear). All sound modules, the D-MiX effects as well as the vocals of the Harmony-Voice can be positioned freely between the front and rear channels. Additional parameters such as phase, delays, etc. make it possible to achieve incredible room effects - from a cellar bar to a cathedral!

The SE100 home edition has a quadrophonic speaker system as standard. However, it can be equipped with additional external speakers for an even broader effect. For the SE70 and SE80 models, external active speakers are required for the rear channels in any case.





- **HarmonyVoice and extended microphone section:**

Dedicated 5-band parametric equalizer for the microphone input as well as editing functions for compressor and noise gate.

Dedicated reverb/echo effects for the microphone input. HarmonyVoice processor with up to 4 additional voices to complement the lead voice (your voice) and 6 different operating modes:

Tune: corrects slight detunings in the sung notes.

Detune: creates a unison singing chorus of up to 4 voices to the Lead Voice.

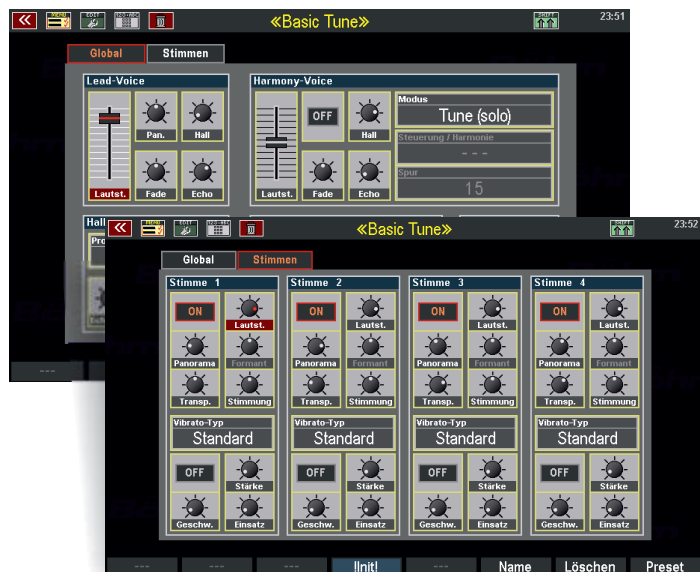
Chord: creates a chorus of up to 4 voices to the lead voice, depending on the key or harmony in the auto accompaniment.

Harmony: similar to Chord, but here the 4 additional chorus voices are controlled from a playback, or e.g. from live playing on one of the manuals.

Vocoder solo: Only the first harmony voice plays (lead voice is muted), the harmony voice is controlled in pitch by the played notes on the manual, no matter what pitch is sung.

Vocoder chord: Again, the lead voice is muted, but up to 4 harmony voices "sing" the notes played on the manual or from a playback.

- **Individual setting options** for the 4 Harmony Voice voices: Each voice can be adjusted in volume, pan, octave position and tuning.



- **Integrated Humanizer**: smoothes out the tone jumps that result from the corrections for a more natural sound.
- **Transpose automatic**: transposes Harmony Voice voices close to the sung notes.
- **Gender automatic**: changes the pitch of the Harmony Voice voices depending on the amount of transposition by formant shifting, making the voices sound more "male" or more "female". The shift can also be adjusted manually.
- Volume, panorama and, if necessary, quadro-fading for Lead Voice and Harmony Voices can be set individually.
- Harmony Voice settings can be saved in their own presets, which are linked to the SONG presets. Acoustic settings such as compressor, noisegate, etc. are stored in the mixer presets.

### SEMPRA MIDI functions

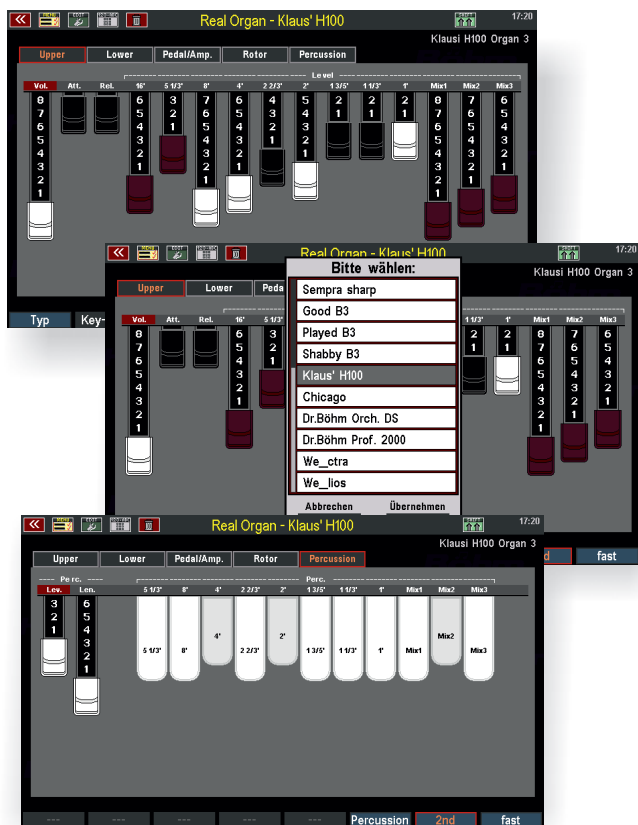
- No other organ offers more MIDI possibilities: Extensive MIDI master functions up to the complete integration of external MIDI sound generators into the SEMPra's user interface.
- Up to 3 MIDI IN/OUT connections, depending on the model.
- Up to 8 (!) additional MIDI In/Out via USB.
- 16 input and output channels per interface.
- **Separate MIDI Out part per manual or in the pedal** to play MIDI sounds directly.
- **16 MIDI In Parts** to play SEMPra sounds from external sequencers or MIDI instruments.
- **Up to 16 User Parts** optional, all with freely adjustable MIDI routing settings, for individual applications.
- For each MIDI interface extensive in/out settings like MIDI clock, preset change via MIDI, MIDI filter, swell controller, etc.
- **128 x 128 sound presets with flexible MIDI routing**, easily configurable via standard routings or individually per sound preset. Full integration of external MIDI controller sounds via sound presets.
- MIDI hexdumps definable and usable as button or knob functions.
- **All sliders/drawbars/wheels can be used as MIDI controllers**. All can be assigned to any MIDI controllers and routed to any interfaces and channels.

## Even more sounds, styles, and SONG registrations

Get more out of your SEMPRAs! Our musicians regularly create new sounds/samples, styles, arpeggios and registrations for the SEMPRAs series, which you can easily get into your instrument via software packages.

### More organ types for the RealOrgan drawbar organ

With the additional organ packages you can expand the sound spectrum of the RealOrgan with the typical drawbar sounds of many legendary organ types. Finally all famous sine organ sounds in one instrument. Including all foot positions (up to 15 choirs) and the typical effects like phasing rotor, full percussion over all foot positions, envelopes and much more. The dream of all organ fans finally comes true!



- **Pack SEMPRAs:** 3 drawbar organ types: „Sempra Rotary“, „Sempra Phasing“, „Sempra sharp“, incl. Phasing-Rotor.
- **Pack Böhm Vintage:** 2 drawbar organ types: „Böhm Orchester DS“, „Böhm Professional 2000“, incl. Phasing-Rotor.
- **Pack WE Vintage:** 2 drawbar organ types: „WE\_ctra“, „WE\_lios“, incl. W-Voice Rotor.
- **Pack American:** 5 drawbar organ types; „Clean B-3“, „Used B-3“, „Shabby B-3“, „Klaus' H-100“, „Chicago“, incl. Phasing-Rotor.

### Organ Presets

16 organ presets per type are already pre-installed. You can also save up to 32 custom organ presets per type as a library.

### Böhm – Famous Organs

#### The whole world of church and theatre organs

With the sound packages of the BFO series, you can expand your SEMPRAs with the sound world of the great church and theater organs. For the SEMPRAs models SE70...SE100, the BFO packages are standard equipment. For the SE10...SE60 models, they are available as optional software packages.

The **BFO Basic package** with hundreds of high-quality samples is the basis for several sound banks consisting of single and combination stops of both organ types.

#### BFO Classic Complete and Toccata

This elaborate sound package is the "Non-Plus-Ultra" for all friends of classical organ music: Whether Bach, Widor or Reger, with this sound package you will experience the whole world of sacred organ music on your BÖHM organ in a perfection that has probably never been heard before from an electronic "universal" organ!

Several sound banks with a total of 256 single stops and stop combinations as well as 107 SONGs with 6 perfectly tuned total registrations (setzer combinations) each offer the tonal basis for the works of the great masters in a tonal perfection that can otherwise only be expected from a large church organ.



Due to the integrated C/Cis separation with changing panorama positions of the individual notes the stops sound as realistic as in a real pipe organ.

In the registrations the new distance parameter is used extensively. It allows the individual spatial positioning of the single stops/parts. In this way, you will find

settings that sound more direct, just as you would experience the sound as an organist at the console of a pipe organ directly on the organ floor. Other registrations sound more indirect, corresponding to the listening impression of the audience down in the church nave.

### **BBO Theatre Organ**

With this sound package you expand your SEMPRA by a large theater organ with 232 typical single and combination stops and (with the original pneumatically generated) sound effects. All sounds have been elaborately sampled from an original Wurlitzer theater organ from the 1920s. A bank of lovingly tuned registrations is also included in the package. Revive the legendary sound of the great theater and cinema organs on your SEMPRA.

### **Accordion Fascination**

The accordion in all its different variations is without question one of the most popular musical instruments in the world! The basis of this sound package is a total of 80 accordion sounds based on new samples. Our musicians have recorded typical stops of different accordion types and created a mix of single stops of any kind.

In addition, there are 15 more "bonus" sounds, including special bass and chord sounds, which allow typical accompaniment playing like on the "real" instrument!



From these sounds you can compose your own "virtual" accordions via the Parts and save them as SONG presets. Many typical characteristics of the original instruments have already been pre-programmed. So you don't need to worry about this yourself when playing. So that you can discover the tonal possibilities of this sound package directly, the package contains 18 sample registrations.



### **AMADEUS Movie Sound Collection**

No organ has ever sounded so cinematic! A sensation for all friends of the great works of film music, but also valuable for other music genres: The package contains a sound bank with 128 fantastic sounds, based on hundreds of new samples for the AMADEUS Pro-D sound generation of your SEMPRA.

The AMADEUS MOVIE SOUND Collection contains, among other types, epic strings and horns, effective soundscapes, pads and cinema percussion, ethnic and solo sounds such as French Oboe, Monochord, Orchestra Harp, Duduk, Uilleann Pipes, combination sounds with interesting playing functions, and much more.



Of course, the sounds can be used not only for film music, but also excellently for classical music and many other styles.

The versatile AMADEUS DSP effects and "ART" playing and articulation functions have been used extensively in this sound bank.

They allow you to control the sounds in a very differentiated way and, for example, change the instrumentation of your film orchestra directly while playing.

An "Oscar-worthy" sound experience of the special "Art!

In addition to the 128 sounds, the package also contains 6 "effectful" Movie Styles with 4 Style Basic presets each, as well as 12 SONGs with 6 elaborately arranged registrations each.

### AMADEUS Multi Sound Editor

Become a sound designer and create your own AMADEUS sounds with the AMADEUS Multi-Sound Editor App - directly on the instrument!

Create new sounds from up to 4 individual element sounds, each of which you can edit individually via numerous sound parameters.



For example, envelopes are available for volume, filter and pitch, as well as various sample parameters and also up to two LFOs that can affect pitch (vibrato), volume or timbre. In addition, the multi-sound editor allows you to access the special "ART" playing parameters. This allows you to determine whether individual elements should always sound, or only after a certain number of buttons have been pressed, or randomly. This allows for particularly sophisticated sounds with interesting playing and articulation functions.

Of course, the multi-sound editor also gives you full access to all parameters of the AMADEUS effect DSPs. So you can refine your sounds with up to 6 effects such as compressor/limiter, distortion, wah-wah, chorus/rotor, 4-band EQ (parametric) and echo - all comprehensively editable, of course!

In addition, you can switch sounds in the Sound Editor to the D-MiX Rotor, if available.

### SONG-Preset lists for SEMPRA 2.0

Expand the SONG list of your SEMPRA with numerous new, perfectly tuned overall registrations. Böhm professional musicians are constantly creating new arrangements that you can use as SONG presets on your SEMPRA. The registrations of our artists are also especially valuable as inspiration for your own creations. Currently the following packages are available, the series will be extended regularly:

- **SONG list "Christmas and Blessing Songs"**  
36 SONGs with 6 presets each for many traditional Christmas and blessing songs.
- **SONG list „German Schlager and international Hits“**  
64 SONGs with 6 presets each for many well-known German Schlager and international hits, including music book.
- **SONG list „SONG-Box 1“ by Claus Riepe**  
64 title-specific SONGs with 6 sophisticated presets each, arranged by BÖHM specialist Claus Riepe.



- **SONG list „Stage, Screen and Evergreen“ by DirkJan Ranzijn**  
32 title-specific SONGs with 6 registrations each from the concert program of top organist DirkJan Ranzijn.
- **SONG list „SEMPRA Oldies 1“**  
64 title-specific SONGs with 6 presets each for many legendary international hits and Schlager.

## STYLE packs for SEMPRA 2.0

With these packages you expand your SEMPRA Style library with many more styles from all musical genres. For each style you will find a SONG with 4 Style Basic registrations (One Touch presets), so you can find the right sound immediately.

Also this series will be continuously extended with new packages. Currently the following packages are available:

- **Style pack STAR-COLLECTION 1**  
32 styles incl. 128 registrations, e.g. 8-Beatrock Party, 8-Beat light, Boney M.-Medley, Dance Trouper, Howard Medley, Soft US 16 Beat, Sommernacht Beat, Rock you b., Rote L. Shuffle, Sarahs Softbeat, Sentimental Swing, u.v.a.
- **Style pack STAR-COLLECTION 2**  
32 styles incl. 128 registrations, e.g. Twilight 6-8, 8-Ballad Michelle, Bayernpolka Musi, Disco Fischer, Rumba 2-Gitarren, Spanish Night, Tanze Samba, Latin Tequila, Tijuana Swing, Top of the w. Country, Winnetou, u.v.a.
- **Style pack STYLE BOX 1**  
15 styles with 90 registrations, e.g. Ballad Piano, Country Beat fast, Dance Hit, Disco Fox, Slow String Waltz, Pop Ballad 2, u.v.a.
- **Style pack STYLE BOX 2**  
15 styles with 90 registrations, e.g. Adys Alpenbeat, Romantic Ballad, Baker Hitpolka, Disco Schlager, Hardrock Shuffle, Lite Guitar Rock, u.v.a.

- **Style pack AMADEUS STYLE PERFORMANCE 1**  
32 styles with SONG-Presets, e.g. 50s Shuffle, 6-8 March, 6-8 Silvery, Alabama Beat, BGs Disco, Brunner Fox, Brush Swing, Country Beat, Country Shuffle, Foxtrot, Party Polka, Phils Day, u.v.a.
- **Style pack AMADEUS STYLE PERFORMANCE 2**  
32 styles with SONG-Presets, e.g. 60s Shuffle, Ballade Angel, Christmas Waltz, Country Fox, Folk Beat, Konzert Walzer, Organ Quickstep, Spanish Rumba, Barry Disco, Smoky Beat, u.v.a.
- **Style pack DOO - Entertainer**  
10 title-related entertainer styles from the style factory DOO with SONG-Presets, e.g. Ballade Adeline, Charleston, James Polka, Schunkelwalzer, u.v.a.
- **Style pack DOO – 70er/80er**  
10 title-related styles for well-known 70s/80s hits from the style factory DOO with SONG-Presets, e.g. Night Fever, Dolce Vita, Fernando, Isla Bonita, Reality, u.v.a.

## VSP Pro SEMPRA 2.0 (produced by Viva Musica)

The Viva Style Performance - a comprehensive package with sounds, styles and many registrations, created by our partner Viva Musica. The VSP package contains among others:

- 415 VSP SEMPRA PRO 2.0 sounds including VSP FX effect settings and "Art" dynamic or accompaniment properties.
- More than 400 VSP-Pro 2.0 registrations, including over 100 performance presets as Sound Basics, 256 VSP Style Basic registrations (One Touch Presets) and 22 title-related SONGs with 6 individual registrations each.
- 64 + 8 Bonus VSP Pro Styles
- All VSP Pro Styles and SONG presets take full advantage of the sound and playing capabilities of SEMPRA version 2.0.

More information about all SEMPRA software packages and about new releases can be found regularly on our website [www.boehm-organs.com](http://www.boehm-organs.com) and in our price lists.

# SPECIFICATIONS

## SEMPRA: model-specific equipment in overview:

	SEMPRA SE10 2.0 GST	SEMPRA SE10DB 2.0 GST	SEMPRA SE20 2.0 GST stage	SEMPRA SE20 2.0 GST home
<b>Manuals</b>	All keyboards weighted and playable with high-resolution velocity and			
61 keys, weighted		●	● 2x	● 2x
76 keys, weighted	●			
Chromatic keyboards available		○	○	○
<b>Pedals</b>	All pedals velocity sensitive playable. Individually			
17 keys	○	○	○	●
25 keys	○	○	○	○
30 keys				
<b>Controller</b>	All controllers (except master volume and swell)			
Pitch	●	●	●	●
Modulation	●	●	● 2x	● 2x
Slider	14	14	14	14
Drawbars		12	9	9
Swell pedal (with 2 foot switches)	○	○	○	●
2nd Swell pedal (with 2 foot switches)	○	○	○	○
Foot switches / Pistons (fourfold)	○	○	○	○
S1/S2 buttons			●	●
8 x F-buttons (function buttons)	●	●	●	●
<b>Parts min. / max. (with Part extension)</b>	The specified number of parts (*minimum number or maximum number if part extensions are installed) corresponds			
Solo Manual				
Upper Manual	4 / 6*	4 / 6*	4 / 8*	4 / 8*
Lower Manual	2	2	4 / 8*	4 / 8*
Pedal	1 / 2*	1 / 2*	1 / 3*	1 / 3*
RealOrgan Drawbars	The RealOrgan can be played on			
SoloChord (Can also be used as normal part)	1	1	1	1
MIDI Out (1 per manual, Lower:1 left,1 right)	3	3	4	4
MIDI In	There are 16 MIDI-In parts available, via which			
up to 16 User-Parts, free assignable	2x8 optional user parts, individually configurable,			



● standard equipment    ○ option

SEMPRA SE40 2.0 GST	SEMPRA SE60 2.0 GST	SEMPRA SE70 2.0 GST	SEMPRA SE80 2.0 GST	SEMPRA SE100 2.0 GST
d affertouch. Individual dynamic curves can be set for each manual to adapt to your own playing style.				
● 2x	● 2x	● 2x	● 2x	● 2x
				● Lower
○	○	○	○	
dual dynamic curve adjustable for the pedal to adapt to your own playing style				
●	●	●		
○	○	○		
			●	●
function on swell pedal1) are individually assignable via button and slider presets				
●	●	●	●	●
● 2x	● 2x	●	●	●
14	14	7	7	7
9	9	44	44	44
●	●	●	●	●
○	○	○	○	●
○	○	●	●	●
●	●	●	●	●
●	●	●	●	●
depends to the number of sounds that can be played simultaneously per manual/pedal. Many playing parameters can be set individually for each part				
	1 / 3*			3
4 / 8*	5 / 8*	8 / 10*	8 / 10*	10
4 / 8*	5 / 8*	8 / 10*	8 / 10*	10
1 / 3*	2 / 3*	3 / 4*	4 / 4*	4
on Upper, Lower and Pedal, each with its own drawbar system.				
1	1	1	2	2
4	5	4	4	5
ch the SEMPRA can be played by external MIDI instruments or sequencers.				
can be used as additional manual/pedal or MIDI parts. More details on request.				

	SEMPRA SE10 2.0 GST	SEMPRA SE10DB 2.0 GST	SEMPRA SE20 2.0 GST stage	SEMPRA SE20 2.0 GST home
<b>Sound Modules</b>	Depending on the model, 1 to 5 AMADEUS Pro-D sound modules can be used. 4 effect DSPs per AMADEUS soundmodule, each			
AMADEUS Pro-D modules min. / max.	1	1	1 / 2	1 / 2
Polyphony AMADEUS min. / max.	117 Voices	117 Voices	117 / 234 Voices	117 / 234 Voices
Amount AMADEUS Effect DSPs min./max.	4	4	4 / 8	4 / 8
Amount AMADEUS sounds	> 1.500, 41 DrumKits incl. 8 Pro-Kits			
RealOrgan drawbar module	○	●	○	●
<b>Cabinet</b>	All wooden parts such as sidepanels or full cabinets made of solid wood			
Metal with solid wood side parts	●	●	●	● stand: solid wood
Full cabinet in solid wood or real wood				
plugin connector between top and stand				● connectors external
adjustable bench, solid or real wood	○	○	○	○
<b>Speakers / Amplifiers</b>	SE20...SE80 home edition with stereo multi-way speaker system. SE100 home edition			
Multichannel speaker system				●
additional tweeters in the top				
Bang&Olufsen power amp, 2x250 watts			○	●
available without speakers/amplifiers				●
<b>Connections</b>				
Stereo Line Out / Stereo Line In	1 / 1	1 / 1	1 / 1	1 / 1
Mikrophone input	●	●	●	●
Speaker Out			2	2
Headphone	●	●	●	●
MIDI IN / OUT / THRU	3 / 2 / 2	3 / 2 / 2	3 / 2 / 2	3 / 2 / 2
USB	3	3	3	3
<b>Dimensions (W x Dx H), Weight</b>	Attention: The indicated weights may vary depending on the configuration			
	1180 x 420 x 160 mm Weight: ca. 19 kg	1180 x 420 x 160 mm Weight: ca. 19 kg	1170 x 580 x 260 mm, Weight: ca. 27 kg	1170 x 580 x 960 mm, with music rest: 1110 mm Weight: ca. 62 kg



● standard equipment    ○ option

SEMPRA SE40 2.0 GST	SEMPRA SE60 2.0 GST	SEMPRA SE70 2.0 GST	SEMPRA SE80 2.0 GST	SEMPRA SE100 2.0 GST
of which generates up to 6 effects simultaneously. In addition, there is the Real Organ sound module as an independent sound generator for the drawbar sounds				
1 / 2	1 / 2	2 / 5	3 / 5	4 / 5
117 / 234 Voices	117 / 234 Voices	234 / 585 Voices	351 / 585 Voices	468 / 585 Voices
4 / 8	4 / 8	8 / 20	12 / 20	16 / 20
> 1.800 incl. Church / Theatre Organ stops, 41 DrumKits incl. 8 Pro-Kits				
●	●	●	●	●
od, also real wood on request. Many different surfaces and stains, also brilliant lacquer finishes available				
●	●	●	●	●
●	●	●	●	●
○	○	●	●	●
with quadrophonic speaker system. All organ models also available as concert edition without loudspeakers/amplifiers				
●	●	●	●	● quadrophonic
●	●	●	●	●
●	●	●	●	● 2x
●	●	●	●	●
1 / 1	1 / 1	2 (Front und Rear) / 1	2 (Front and Rear) / 1	2 (Front and Rear) / 1
●	●	●	●	●
2	2			10
●	●	●	●	●
3 / 2 / 2	3 / 2 / 2	1 / 1 / -	1 / 1 / -	1 / 1 / -
3	3	2	2	2
ding on the actual cabinet finish (woodtype,home or concert edition, brilliant lacquer).				
1260 x 670 x 1060 mm, with music rest: 1280 mm Weight: ca. 82 kg	1260 x 830 x 1130 mm, with music rest: 1350 mm Weight: ca. 98 kg	1260 x 830 x 1120 mm, depth with pedal/bench: ca. 1300 mm Weight: ca. 89 kg	1380 x 830 x 1120 mm, depth with pedal/bench: 1470 mm Weight: ca. 98 kg	1380 x 930 x 1380 mm, depth with pedal/bench: 1620 mm Weight: ca. 130 kg

## FRESH CELL CURE: SEMPRA 2.0 GST also as upgrade

Do you recognise the organ in the picture below? Exactly, this wonderful former Overture M3 has been transformed into a fully-fledged **SEMPRA SE60 2.0 GST** - of course including the latest AMADEUS Pro-D tone generation, RealOrgan drawbars and D-MiX preamplifier.

In good Böhm tradition, all organs of the **Starlight, Overture, Sinfonia, Emporio** model series and the two-manual **Silverbird models Premium, Platinum** and **SVB 27** can be converted to the new SEMPRA technology incl. version 2.0, GST-Guitar Strumming accompaniment, AMADEUS Pro-D tone generation, RealOrgan and D-MiX preamplifier. This way, your beloved instrument becomes a new organ with state-of-the-art technology and all the features and possibilities of the new SEMPRA 2.0 GST generation.

Of course, your converted SEMPRA can also be equipped with all with all extension apps and software packages for SEMPRA 2.0 GST.

We promised: Your BÖHM instrument will not become obsolete!

You are already a happy owner of a first generation SEMPRA? Let your excellent instrument participate in progress and make it even better - even more perfect!

Upgrade your SEMPRA to the new version 2.0 GST and the new AMADEUS Pro-D and D-MiX technology. Upgrade to the latest features like GST Guitar Strumming Accompaniment, SempraChord, Arpeggiator, Sideline and more.

You will experience and enjoy a whole new SEMPRA whenever you make music on this fantastic instrument!

Take us at our word and request a non-binding offer for an upgrade of your BÖHM instrument right away! We or your nearest BÖHM contract partner will be happy to advise you on all the possibilities for your instrument!



# SEMPRA

## See - Hear - Play The **Best**, that can happen to your music

Of course, this brochure can only give you a first impression of the outstanding versatility of our SEMPRA 2.0 GST instruments. But the special sound experience that SEMPRA offers you cannot be put into words. You simply have to experience SEMPRA for yourself!

We therefore cordially invite you: Visit us at our headquarters in Bückeberg, at one of our authorised dealers (for addresses see website [www.boehm-orgeln.de](http://www.boehm-orgeln.de)) or at one of our regular events. Current dates and much more information can be found regularly on our website. There you will also find our virtual demonstration studio with SEMPRA configurator.

We look forward to presenting SEMPRA to you personally and without obligation. Experience an organ generation like no other - and let us show you in detail what makes SEMPRA so special. You will be thrilled!

### **Böhm on the Internet:**

**[www.boehm-organs.com](http://www.boehm-organs.com)**

**[www.boehm-live.com](http://www.boehm-live.com)**

**[www.youtube.com/user/BoehmOrgans](https://www.youtube.com/user/BoehmOrgans)**

**[www.facebook.com/boehm.orgeln](https://www.facebook.com/boehm.orgeln)**

**Instagram: [@boehmorgans](https://www.instagram.com/boehmorgans) [@boehm\\_orgeln](https://www.instagram.com/boehm_orgeln)**





Your BÖHM partner

**Keyswerk Musielektronik GmbH**

Warbersche Str. 32

31675 Bückeburg

Germany

Tel. (+49) 05722 / 905088

Email: [info@boehm-organs.com](mailto:info@boehm-organs.com)

**[www.boehm-organs.com](http://www.boehm-organs.com)**