

SEMPRA 2.0

Installation and Playing Instructions



Installations- und Spielhinweise Songliste „Weihnachten & Segenslieder“ für SEMPRA 2.0

Version 1.0, 06.02.2022

Art.-Nr. 43261AE

The information contained in this documentation may be changed without announcement and are subject to change without notice by Keyswerk Musikelektronik GmbH & Co. KG does not represent an obligation.

The description contains the current state of information at the time of going to press.

Changes of technical details compared to the descriptions, the information and illustrations in this manual are subject to change without notice.

Keyswerk Musikelektronik GmbH assumes no liability for program errors and for incorrect information in the documentation and its consequences.

© Keyswerk 2022

All rights reserved

Responsible for the content of this website

KEYSWERK Music Electronics GmbH

Warbersche Str. 32

31675 Bückeburg

Germany

Phone: 05722 - 905088

Fax: 05722 - 287555

Internet <http://www.keyswerk.de>

E-mail info@keyswerk.de

Content

General	4
Installation.....	5
Calling up the SONG list Christmas & Blessing songs	6
Overview SONG list Christmas & Blessing Songs.....	9

General

Christmas only becomes truly beautiful with festive music on the SEMPRA! With the SONG List Christmas & Blessing Songs you now get 36 new SONGs with 6 presets each for your SEMPRA 2.0, with which you can present many well-known German and international Christmas songs, but for the first time also various common blessing songs sonorously.

Thanks to these registrations, your SEMPRA is thus not only suitable for Christmas music at home, but also, for example, for use in contemporary church services!

This SONG list is a considerable extension of the Christmas SONG preset bank already included in the standard SEMPRA software. All SONGS are fully populated with 6 global presets. Partly these are designed in such a way that you can play the corresponding title in the sequence INTRO...ENDING with it. In other SONGS, however, you will find up to 6 preset variations (VAR. 1...VAR.6), with which you can play the corresponding Christmas song with completely different registrations, but of course suitable for the title.

The presets have been worked out in great detail, e.g. functions like the SoloChord or SempraChord etc. have been used - as far as it makes sense - to achieve sound enhancements.

Of course, you can also use these presets for other pieces of music, or use them as inspiration for your own SONGS/presets.

In the appendix to these operating instructions you will find an overview of all included SONGS.

Installation

You will receive the data of the SONG List Christmas & Blessing Songs directly as an installation file on the factory data stick belonging to your SEMPRA 2.0, or, in the case of a subsequent purchase of the software, if necessary, as an archive file by e-mail. In this case, first save the archive file sent to you on the factory data USB stick on your PC as described in the main SEMPRA manual.

Then insert the stick into the SEMPRA. The display reports that the archive file has been found and asks whether it should be unpacked. Confirm the query with **[Enter]**.



The installation data is now available on the stick and can be installed as described below.

But first a tip: If necessary, delete the archive file from your factory data stick again after installing the data. Otherwise, the display will always ask whether the file should be unpacked when you insert the stick into the organ, since archive files are automatically recognized. The unpacking has now already been done and the archive file can thus be deleted from the stick, it is no longer needed.

But now to the actual installation:

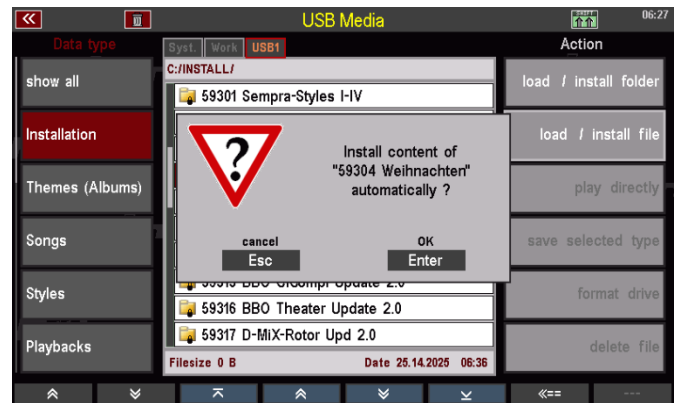
Attention: Like all factory data and other additional software packages, the SONG List **Christmas & Blessing** songs is installed **account-specific**. If you want to use the SONG List in several user accounts, you must perform the installation separately for each of these accounts once.

We assume that the installation data is now on your factory data stick and the stick is inserted in the SEMPRA:

- Enter the USB menu and tap the **Installation** data type on the left. The list with the installation files is displayed.
- Place the cursor on the folder **59304 Weihnachten** and tap **Load/Install Folder** on the right side.



- The display asks whether the data should really be installed. Confirm with **[Enter]**.

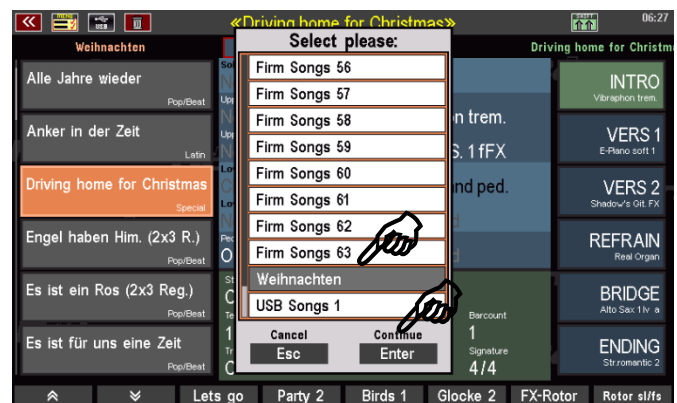


- The SONG bank will now be installed. You can then remove the stick from the SEMBRA.

This completes the installation of the SONG list. The new SONGs/Presets can now be used for playing.

Calling up the SONG list Christmas & Blessing songs

The SONG list **Christmas & Blessing songs** occupies the **Firm SONG bank 64**. You can call up and select this SONG bank by activating the SONG filter button **[Bank]** to the left of the display and (after tapping the button again) selecting the **“Weihnachten”** (Christmas) bank from the list with the data wheel and confirming with **[Enter]**.

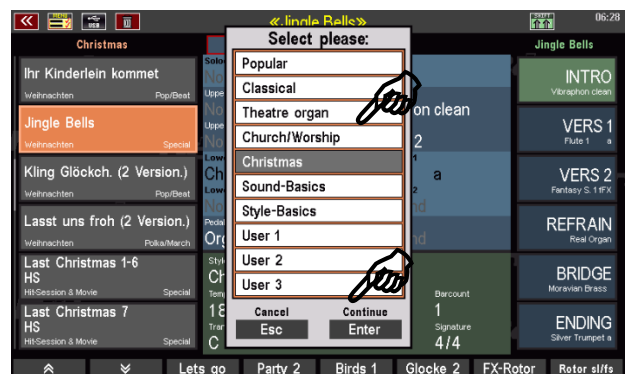


After selecting the bank, you can select the SONGS of the list in the display:



You can call the SONGs of the list also with activated SONG filter **Genre – Christmas** (Christmas songs) resp. **Church/Worship** (Blessing songs):

- Tap the SONG filter button **[Genre]** to the left of the display. This filters the SONG list in the display according to musical genres.
- Tap the **[Genre]** button a second time. You can now select the desired genre in the display.
- Select for example **Christmas** here or **Church/Worship** and confirm with **[Enter]**.



If you have selected the genre **Christmas**, you will now find only SONGS assigned to the genre **Christmas** in the SONG list in the display. These are, for example, all the *Christmas* SONGS in the **Christmas & Blessing Songs** list.

The *Blessing songs*, on the other hand, can be found in the SONG list for the **Church/Worship** genre, since these tunes are not necessarily Christmas music. In the genre **Church/Worship** you will also find, for example, the SONGs belonging to the church organ package BBO Classic Complete, if this package is installed on your SEMBRA.

If you have already assigned your own SONGs to these genres, these SONGs will of course also appear in the respective genre SONG list.

As a third option, you can also find the SONGs of the Christmas & Blessing Songs list as "Style Basics" in the **combined SONG filter mode [STYLE] + [GENRE]**:

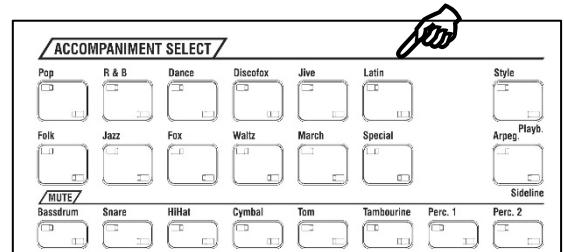
- First tap the SONG filter button **[Genre]** twice and select the desired genre **Christmas** (or **Church/Worship**) from the list. Confirm your choice with **[Enter]**.



- Now switch on the two SONG filter buttons [Style] and [Genre] in combination (the LEDs in both buttons light up).



The SONGs of the genre **Christmas** (or **Church/Worship**) will now appear in the SONG lists of the corresponding accompaniment categories, which you can select using the 12 category buttons in the **ACCOMPANIMENT SELECT** group.



Attention: In this mode, you will always see only the SONGs of the genre in the list that use an accompaniment from the selected category. Accordingly, there may be only a few or no entries in the list if an accompaniment category is used by only a few or no SONGs in the list. The selected filter combination of genre and accompaniment category is displayed in the header of the SONG list.

Here in the picture as an example the combination of the genre **Christmas** and the style category **Swing/Jazz**:

Only the SONG "Let It snow" appears in the list, because no other SONG in the genre **Christmas** uses a style of the category **Swing/Jazz**.



And now we wish you much joy with the presets of the SONG List **Christmas & Blessing Songs** and making music with them on your SEMPRA!

Overview SONG list Christmas & Blessing Songs

Bank	Number	Name
164	001	Stern in dunkler Nacht
164	002	Süsser die Glocken
164	003	Alle Jahre wieder
164	004	Morgen Kinder
164	005	Hark! The Angels Her. sing
164	006	Aber heidschi
164	007	Happy X-mar (war is over)
164	008	Little drummerboy
164	009	Es ist ein Ros (2x3 Reg.)
164	010	Engel haben Him. (2x3 R.)
164	011	Es ist für uns eine Zeit
164	012	Fröhliche Weihnacht
164	013	O du fröhliche (2x3 Reg.)
164	014	Herbei o ihr Gläub. Classic
164	015	Leise rieselt der Schnee
164	016	Schneeflöckchen
164	017	White Christmas
164	018	Driving home for Christmas
164	019	Go tell it to the mount.
164	020	Ihr Kinderlein kommet
164	021	Lasst uns froh (2 Version.)
164	022	Maria durch e. Dornwald
164	023	O Tannenbaum
164	024	Still, still, still
164	025	Stille Nacht
164	026	Zu Bethlehem geboren
164	027	Feliz Navidad
164	028	Jingle Bells
164	029	Let it snow
164	030	Winter Wonderland
164	031	Kling Glöckch. (2 Version.)
164	032	Morgen kommt der W.
164	033	Sei behütet
164	034	Lege deine Sorgen nieder
164	035	Anker in der Zeit
164	036	Ich glaube an den Vater



Keyswerk Musikelektronik GmbH

Warbersche Str. 32

31675 Bückeburg

Germany

Phone: (+49) 05722/90 50 88

Fax: (+49) 05722/287 555

E-Mail: info@boehm-orgeln.de

Web: www.boehm-orgeln.de