

Böhm
ORGELN | KEYBOARDS

SEMPRA 2.0

Installation and Playing Instructions



www.boehm-organs.com

AMADEUS MOVIE SOUND Collection for SEMPRA 2.0 – Installation and playing instructions

Version 1.0, 06.02.2022

Art.-Nr. 42212AE

The information contained in this documentation may be changed without announcement and are subject to change without notice by Keyswerk Musikelektronik GmbH & Co. KG does not represent an obligation.

The description contains the current state of information at the time of going to press.

Changes of technical details compared to the descriptions, the information and illustrations in this manual are subject to change without notice.

Keyswerk Musikelektronik GmbH assumes no liability for program errors and for incorrect information in the documentation and its consequences.

© Keyswerk 2022

All rights reserved

Responsible for the content of this website

KEYSWERK Music Electronics GmbH

Warbersche Str. 32

31675 Bückeburg

Germany

Phone: 05722 - 905088

Fax: 05722 - 287555

Internet <http://www.keyswerk.de>

E-mail info@keyswerk.de

Content

General.....	4
This is what you will find in the MOVIE SOUND Collection for SEMPRA 2.0	4
Installation of the Movie Sound data	5
Micro-SD card	5
MOVIE Sound received by email.....	6
Initial or subsequent installation?	6
Which sound module generation has my SEMPRA?.....	6
1. Installation MOVIE SOUND with existing AMADEUS2 / Crystal Mixer	7
Initial installation:	7
Subsequent installation	13
2. Installation MOVIE SOUND with existing AMADEUS Pro-D / D-MiX.....	15
Initial installation	15
Subsequent installation	17
The MOVIE SOUND sounds and notes on playing and articulation functions.....	18
LIVE SOUND ARTICULATION	24
MOVIE SETS.....	24
Further notes:	24
SONG presets with example registrations.....	24
6 new MOVIE styles	26

General

Film music is a special musical world! What would all the big Hollywood blockbusters be without their charismatic soundtracks? Only the right music gives the images the appropriate emotions and puts the viewer in the respective mood while watching the scenes.

Hollywood composers always rely on typical sounds and instrumentation that we encounter again and again in the various film scores. And a large number of these sounds have been captured by producer and studio professional Jens Daniel for the SEMPRA instruments! With the MOVIE SOUND COLLECTION play well-known soundtrack themes in the authentic sound garb of the great masters such as Hans Zimmer, Howard Shore, Jerry Goldsmith, James Horner and many others.

Whether mighty strings, heroic horns, suspenseful percussions, mystical soundscapes and choirs or melancholic solo instruments - this new sample collection contains everything you need for the work-appropriate performance of this music on your BÖHM organ - NO ELECTRONIC ORGAN HAS EVER SOUNDED SO HOLLYWOOD-LIKE!

But of course, the sounds of the MOVIE SOUND COLLECTION can not only be used for film music, but also for other music genres, such as classical, musical, but also titles from popular music, these sounds can be used excellently and are an enormous enrichment of the sound potential of your BÖHM organ.

This is what you will find in the MOVIE SOUND Collection for SEMPRA 2.0

Sound designer Jens Daniel has created a complete bank of new sounds from hundreds of new samples. These 128 sounds form the sonic basis of the MOVIE SOUND COLLECTION and, after installation, will occupy sound (preset) bank 55 of your SEMPRA or the AMADEUS sound systems it contains.

So that you can immediately experience the sound world of MOVIE SOUND by means of some sound examples in the form of SONG presets, you will find a total of 18 SONGs with 6 individual presets each on the factory SONG bank 13 (Hit Session&Movie). These presets - created for well-known film scores, but also for other titles - are primarily filled with sounds from the MOVIE sound bank and show how sonically and effectively these high-quality sounds can be used for the most diverse directions.

Last but not least, the package also contains 6 new MOVIE styles, which also use many sounds from the MOVIE soundbank and can be used in a variety of ways.

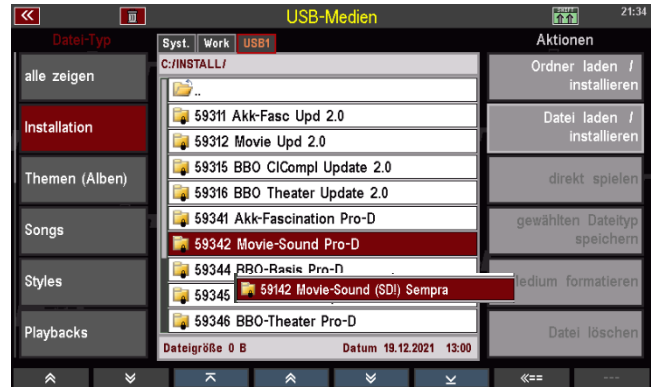
A detailed list of all included sounds, SONGs and styles can be found in the appendix.

Installation of the Movie Sound data

You will receive the MOVIE SOUND COLLECTION in the form of two data folders on a factory data stick to your organ:

Folder 59342 Movie Sound Pro-D (or 59142 Movie Sound (SD!) SEMPRA):

Contains the installation data for loading the new samples from micro-SD card (version Amadeus) or the activation of the new movie samples (version Pro-D), the actual sound data and the sound presets for the movie sounds.



With the installation of this folder the actual 128 sounds of the MOVIE Soundbank 55 are already selectable and also playable.

Folder 59312 Movie Sound Update 2.0:

Also contains the sound presets and also the SONG presets and styles of the MOVIE SOUND COLLECTION.



With the installation of this folder all game data of the MOVIE SOUND COLLECTION are playable. For subsequent installations (e.g. after upgrading SEMPRA to the 2.0 version or in newly created user accounts) only this folder must be installed.

Micro-SD card

In case of a SEMPRA equipped with Amadeus2 and Crystal Mixer, you will also receive a micro-SD card with the new sample data of the MOVIE soundbank with the MOVIE SOUND package.

The current Amadeus Pro-D modules already contain the corresponding samples and are activated by the initial installation of the Movie Sound Pro-D folder. An installation of the samples from micro-SD Card is therefore no longer necessary here. The micro-SD Card is therefore not supplied for instruments with Amadeus Pro-D /D-MiX equipment.

MOVIE Sound received by email

If you subsequently obtain the MOVIE SOUND COLLECTION for your SEMPRA with Amadeus Pro-D /D-MiX, you can also receive the data as an archive file by e-mail (*.arc file). In this case, please transfer the archive file to the factory data stick belonging to your SEMPRA or to another USB stick formatted in the organ. When inserting such a stick into the SEMPRA, the display asks whether the archive file should be unpacked. Confirm the query with **[ENTER]**. Afterwards you will find the two data folders of the MOVIE SOUND COLLECTION in the installation directory of the stick.

Initial or subsequent installation?

The installation of the samples and sound data (folder **59342 Movie Sound Pro-D** or **59142 Movie Sound (SD!) SEMPRA**) and thus also the use of the micro-SD Card on instruments with Amadeus2 is only necessary when installing the package on your SEMPRA for the first time. The samples and sound data are available with this installation on the sound module(s) for the future.

In addition, the MOVIE sound presets are installed with this folder. This means that the sounds of the MOVIE SOUND COLLECTION are already selectable and playable.

The folder **59312 Movie Sound Update 2.0**, on the other hand, also contains the sound presets again and also the SONG presets and the styles of the package. This folder must be installed separately in each (new) user account in which the MOVIE SOUND COLLECTION is to be used!

If you have upgraded your existing SEMPRA with Movie Sound to the 2.0 version and created a new user account for SEMPRA 2.0 according to the instructions, or if you later create additional new user accounts on your SEMPRA 2.0, you only need to install the **59312 Movie Sound Update 2.0** folder in these accounts to be able to use the MOVIE SOUND sounds, presets and styles. A new installation of the sound data, on the other hand, can be omitted. It is only necessary if you later insert new, additional sound modules into your SEMPRA.

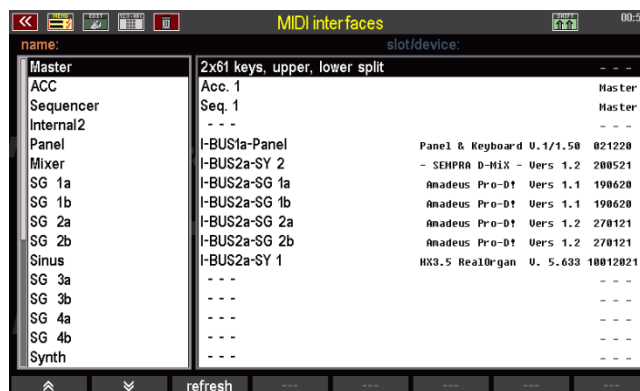
Which sound module generation has my SEMPRA?

As already mentioned, the **initial installation** of the Movie Sound data is done in a different way, depending on whether your SEMPRA is equipped with the **Amadeus2** sound system (and the Crystal Mixer preamp), or already with the newer **Amadeus Pro-D** (and the new D-MiX preamp) (instruments delivered since December 2019).

If you are not sure which Amadeus generation is present in your instrument, you can query this information via the MIDI menu of the SEMPRA:

- Press the **[MENU]** button to call up the BMC menu.
- Tap the **Parts & MIDI** menu item, then tap the **MIDI slots** submenu.

- The display now shows the internal sound modules with their software versions as well as the version of the existing mixer. In our example these are **AMADEUS Pro-D** (Vers. 1.2) and the **D-Mix** preamplifier.



name:	slot/device:	
Master	2x61 keys, upper, lower split	-- --
ACC	Acc. 1	Master
Sequencer	Seq. 1	Master
Internal2	-- --	-- --
Panel	I-BUS1a-Panel	Panel & Keyboard U. 1/1.50 021220
Mixer	I-BUS2a-SY 2	- SEMPRA D-MIX - Vers. 1.2 200521
SG 1a	I-BUS2a-SG 1a	Amadeus Pro-D† Vers. 1.1 190620
SG 1b	I-BUS2a-SG 1b	Amadeus Pro-D† Vers. 1.1 190620
SG 2a	I-BUS2a-SG 2a	Amadeus Pro-D† Vers. 1.2 270121
SG 2b	I-BUS2a-SG 2b	Amadeus Pro-D† Vers. 1.2 270121
Sinus	I-BUS2a-SY 1	HX3.5 RealOrgan U. 5.633 10012021
SG 3a	-- --	-- --
SG 3b	-- --	-- --
SG 4a	-- --	-- --
SG 4b	-- --	-- --
Synth	-- --	-- --

- In the case of **AMADEUS2** and **Crystal Mixer**, these components would be displayed.

Note: The SE70, SE80 and SE100 models are supplied exclusively with AMADEUS Pro and D-MIX.

Perform the installation of the MOVIE-SOUND data according to the following sections 1 or 2 accordingly:

1. Installation MOVIE SOUND with existing [AMADEUS2 / Crystal Mixer](#)

Initial installation:

Attention: If your SEMPRA was upgraded to version 2.0 with Amadeus2 and was already equipped with the MOVIE SOUND package before, please continue the installation with the point Subsequent installation on page .

When you **initially** install the MOVIE SOUND Collection on your SEMPRA 2.0, the first step is to transfer the sample data on which the sounds are based from the micro-SD memory card that you received with the MOVIE SOUND package to the AMADEUS2 sound module(s) in the organ.

To do this, open the organ and insert the micro-SD card into the or the first of the existing AMADEUS modules. Then the installation of the USB menu folder is started from the USB stick on which the installation data is located (usually the factory data stick to your SEMPRA). During the installation, the program accesses the micro-SD card and loads the sample data into the sound module. If there are several modules in the organ, the micro-SD card is then to insert into the next module and the installation for this module is to start again from the USB stick. If necessary, this step must also be carried out for any other Amadeus sound modules that may be present.

Then the sound data (if necessary also simultaneously in all existing sound modules), the sound presets and the styles of the MOVIE SOUND COLLECTION are loaded from another installation directory on the stick.

If several AMADEUS modules are present, the installation of the sample data from the micro-SD card must be carried out in each of the modules in turn. To do this, the micro-SD card must be inserted into the next sound module to be installed before the installation is restarted from the USB stick.

The SD card can be inserted while the instrument is switched on, but we recommend that you switch the instrument off and then on again to insert and insert the SD card.

Installation in detail:

Open the top of the organ:

SE10...SE60:

Remove the music stand from the instrument. Unscrew the two small screws on the right and left at the front of the upper control panel completely and then carefully fold the upper control panel upwards until it is locked in place by the retaining strap.

480SE...600SE: Remove the music stand from the instrument. Completely unscrew the two large screws on the right and left below the wooden side panels of the upper section. Then carefully unfold the upper part by pulling up both cover parts of the side panels evenly (!) without tilting the control panels on the manual block. The lid folds upwards together with the control panels attached to it (top, right and left). Open the lid so far that it is locked in place by the inside lid holder.

Alle Modelle: Behind the keyboard block you will see one or two large circuit board(s) with several small circuit boards plugged in, depending on the model or equipment. These smaller boards are the AMADEUS2 sound modules (and if applicable the RealOrgan module, please do not plug in the SD card here!). You can recognize the AMADEUS2 modules without any doubt by the stickers with the "AMADEUS" lettering on them.

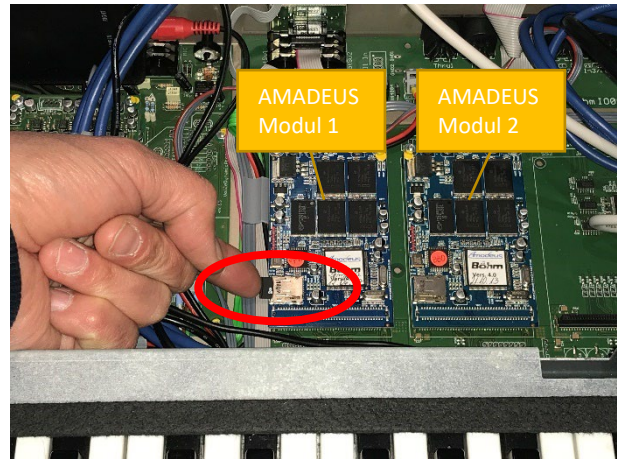
On each AMADEUS2 module, you can see the micro-SD card slot on the front left side with the insertion slot facing the edge of the board.

- Now insert the micro-SD card with the sample data into the (first) AMADEUS sound module (contact row of the card at the bottom and on the right towards the card slot):

SE10: left module (right = RealOrgan)

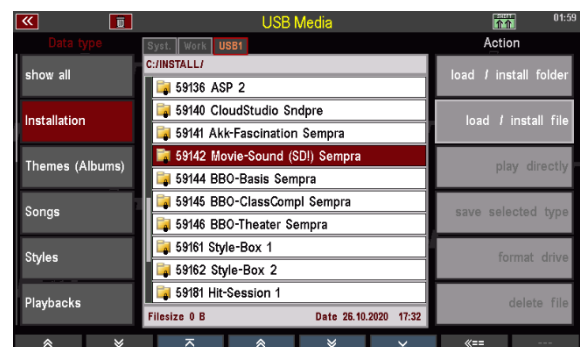
SE20...60 with one AMADEUS:
insert here

SE20....600 with two or more modules: first plug into the left module on the (right) large board (= AMADEUS sound module 1)

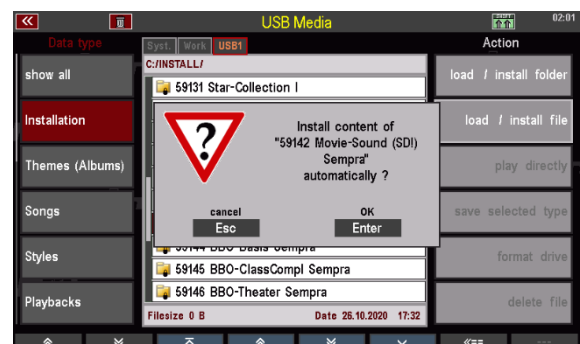


- Press the left edge of the card until the card clicks into the slot.
- Now provisionally close the upper control panel or the upper part lid. For the 480SE...600SE models, make sure that you hold the lid on both sides and do not tilt the right and left control panels when lowering them, but grip them over the side parts of the keyboard block without jamming them.
- Switch on the SEMPRA if necessary.
- After the system start, insert the USB stick with the MOVIE SOUND installation data into the SEMPRA and press the [USB] button. The USB menu is displayed.

- Tap the field **Installation** on the left.
- Select the **Moviesound (SD!) Sempra** entry from the list of installation files with the cursor.
- Tap **Load/Install Folder** on the right side.



- The display asks:



- Confirm with **ENTER**.

- If two or more AMADEUS2 modules are present, the display now asks for which module the sample data should be install:
- Select the sound module into which you have previously inserted the micro-SD card, in this case first the module "**SG1a**" (SG= Soundgroup) and confirm with **[ENTER]**.

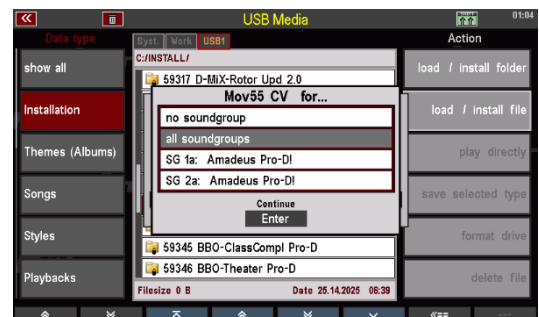


Note: By selecting "No sound group" you can skip installing the sample data from the SD card at this point.

- Various installation processes will now run automatically:

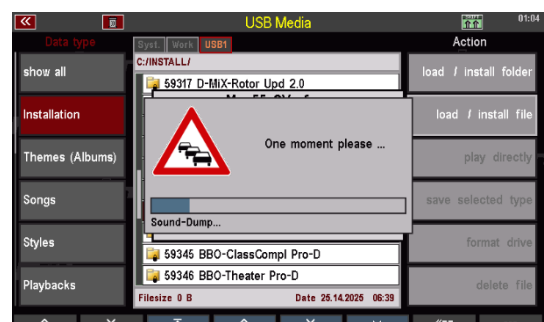


- The next step is to load the sound data that will form the actual sounds from the samples.
- If there are several AMADEUS2 sound modules, you will be asked in which sound modules the MOVIE CV file should be installed.

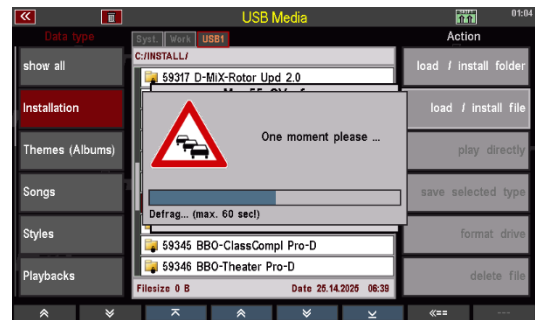


- First select the **SG1a** module that currently contains the SD card.
- You can also select "all sound groups" to load the sound data into all existing AMADEUS2 modules at the same time (the samples from the SD card must first be installed in the other modules so that the sounds can actually be played).
- Confirm your selection with **ENTER**.

The file is now loaded.



The sound memory is then defragmented.



- The last step is to install the sound presets for the MOVIE sounds, i.e. the sound map that you can later use to find the sounds in the SEMPRA sound lists. The installation is done automatically.

If your instrument has only one AMADEUS2 sound module (e.g. SE10 or SE20...60 in standard version), you can now switch off the instrument and remove the micro-SD from the sound module (it can also remain there):

- Open the instrument again and press the left edge of the SD card so that it is ejected from the slot. Then pull out the card completely.
- Then fold the upper panel or the lid back and close it again with the corresponding screws. The installation is complete and the MOVIE sounds can be used after the next power-up of the SEMPRA.

If your instrument has more than one AMADEUS2 sound modules, the sample data from the micro-SD card must now be installed in the other sound modules one after the other:

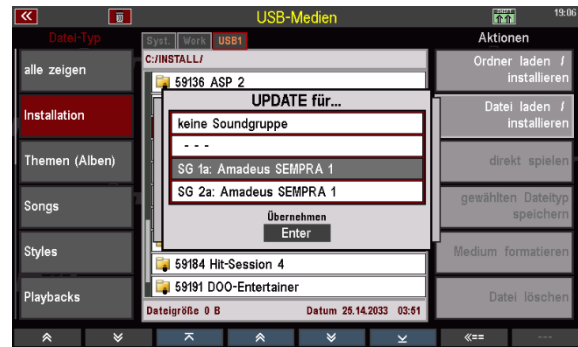
- To do this, switch off the instrument if necessary and open the top again and press on the left edge of the SD card so that it is ejected from the slot on sound module 1. Then pull out the card completely.
- Now insert the SD card into the slot on the second sound module as before. Press the edge of the card again to snap the card into the slot.

SE20...60 with 2 AMADEUS: right module on the big main board

SE20....600SE with more than two modules: now plug into the right module on the right large board (= AMADEUS sound module 2)

- Close the upper panel or the lid and switch on the SEMPRA.

- Start the installation again via the USB menu. When the display asks for which module the installation of the sample data should be done, now select "SG2a" for sound module 2 and confirm with **ENTER**.
- The installation of the sample data is now done for the 2nd AMADEUS sound module.



- Anschließend fragt das Display, ob die Sounddaten installiert werden sollen. **If you installed the sound data (MOVIE CV file) only in the "SG1a" module during the first installation run, select the "SG2a" module here to install the data in module 2 as well.**
- **If you had already selected the installation in "All sound groups" in the first run, a further installation is not necessary any more, since the sound data are then already in all existing sound modules. In this case, you can select "No sound group" at this point to skip reloading the sound data.**



You will then be asked whether the sound presets should be loaded again. The query is made at this point because these files were already loaded in the first installation run and are therefore already present in SEMPRA. You can now reload them [**ENTER**] or cancel the installation [**ESC**].

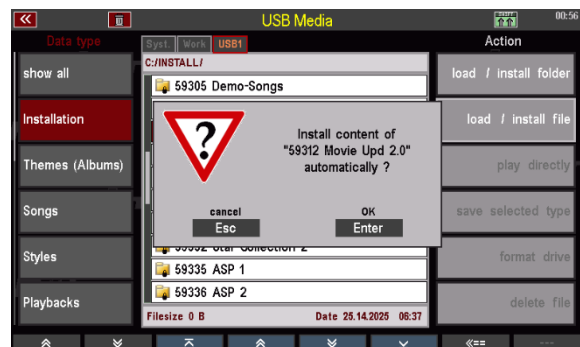
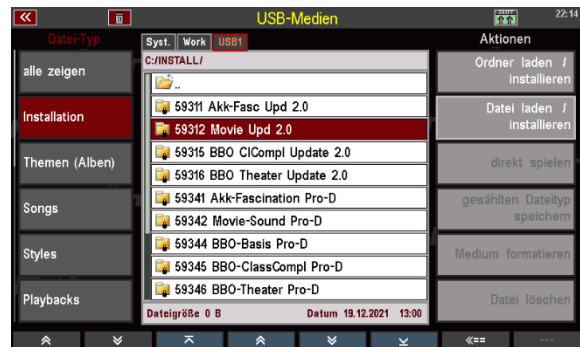
If there are other AMADEUS sound modules, transfer the micro-SD card to the next sound module and repeat the installation of the sample data for this sound module. If necessary, repeat the process for further AMADEUS modules until all modules are installed.

Now that the samples and sound data have been installed in all existing modules, you can now turn off the instrument and remove the micro-SD from the last installed sound module (but it can also remain there). Open the instrument again and press the left edge of the SD card to eject it from the slot. Then pull the card out completely.

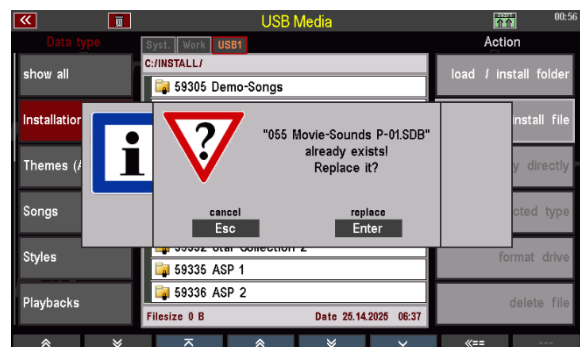
Then fold the upper part back and close it again with the corresponding screws. The 128 sounds of the MOVIE SOUND COLLECTION can already be used after the next power-up of the SEMPRA.

Now we install the remaining data (SONG presets and styles) from the folder **59312 Movie Sound Update 2.0**:

- In the USB menu, place the cursor on the folder **59312 Movie Sound Update 2.0** (do not open the folder!)
- Tap **Load/Install Folder** on the right
- The display asks whether the data should really be installed. Confirm with **[ENTER]**.
- The data is now installed.



- Since the **sound presets** for the MOVIE sound bank were already loaded in the previous step (installation of the sound data), but they are also present in the update folder, you will be asked during the installation whether the file **055 Movie-Sounds P-01.SDB** should be installed again. You can confirm with **[ENTER]**, the already installed file will be overwritten with the identical file from the new folder.



With this the MOVIE SOUND COLLECTION is completely installed and can be used.

Subsequent installation

For a **subsequent installation** of the MOVIE SOUND COLLECTION into a newly created user account, you only need to call up this account and then perform the installation of the **59312 Movie Sound Update 2.0** data folder described above on this page. This applies e.g.

- if your SEMPRA already equipped with the MOVIE SOUND package has been upgraded to version 2.0 and a new user account for SEMPRA 2.0 has been created according to instructions,

- if you create additional new user accounts on your SEMPRA 2.0 in which MOVIE SOUND is to be used.

The installation of the sample and sound data from the micro-SD card is no longer necessary for subsequent installations. Once the data has been installed in the AMADEUS sound module(s), it is permanently available there.

A new installation using the micro-SD card may be necessary if the organ is equipped with additional sound modules or if existing modules are exchanged for new modules during servicing. Therefore, keep the micro-SD card in a safe place for later use.

2. Installation MOVIE SOUND with existing AMADEUS Pro-D / D-MiX

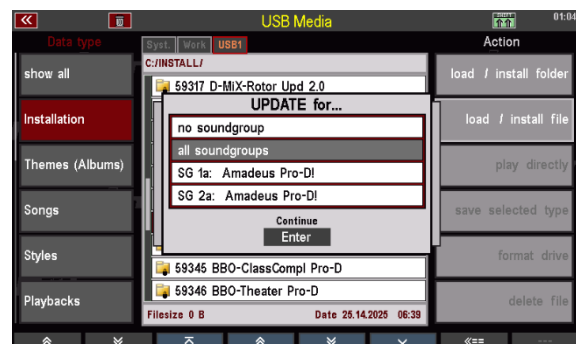
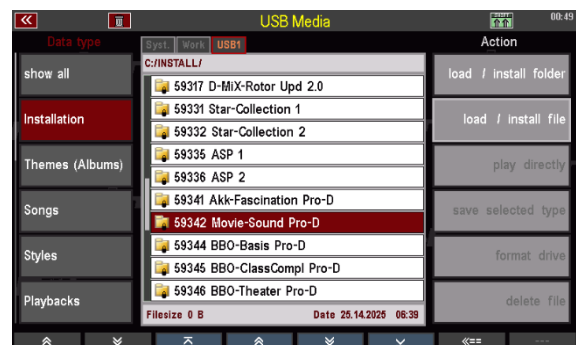
Initial installation

Attention: If your SEMPRA was upgraded to version 2.0 with Amadeus Pro-D and was already equipped with the MOVIE SOUND package before, please continue the installation with the point **Subsequent installation** on page 17.

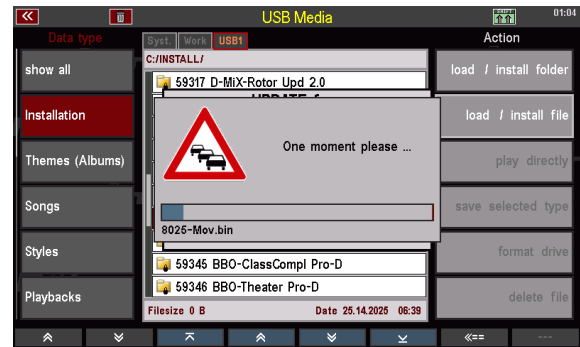
The new **AMADEUS Pro-D** sound modules are already equipped with the sample data for the MOVIE SOUND Collection ex works. An installation from micro-SD Card is not necessary here. The samples are activated with the following installation of the remaining data.

The necessary data (sound data for the AMADEUS sound module(s) and the sound presets) are in the **59342 Moviesound Pro-D** folder on the installation USB stick that you received with your SEMPRA. This folder can be installed from the stick in the usual way:

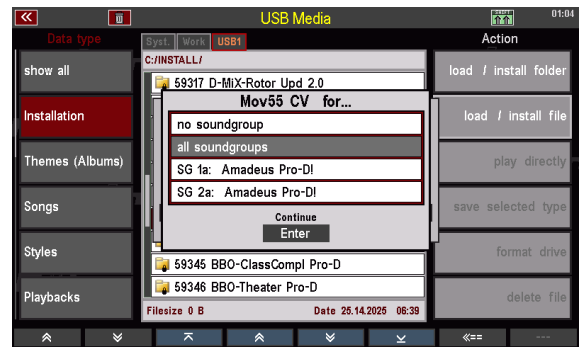
- Insert the installation stick into the organ.
- Press the **[USB]** key to open the **USB** menu.
- Select **Installation** in the left column (file type).
- Place the cursor on the **59342 Moviesound Pro-D** folder in the file list.
- Tap **Install Folder/File** in the right column.
- Confirm the following security prompt with **ENTER**.
- If several Amadeus Pro-D modules are present, the display asks in which sound groups the sound data should be installed. Select "all sound groups" and confirm with **ENTER**.



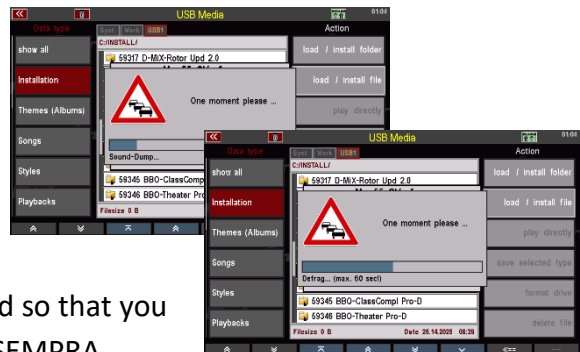
- At first the file 8025-Mov.bin will be loaded.



- Then the sound data for the MOVIE sounds are loaded. If more than one Amadeus Pro-D module is present, the display asks again to which sound system the data should be loaded. Again, select "all sound modules" and confirm with [Enter].



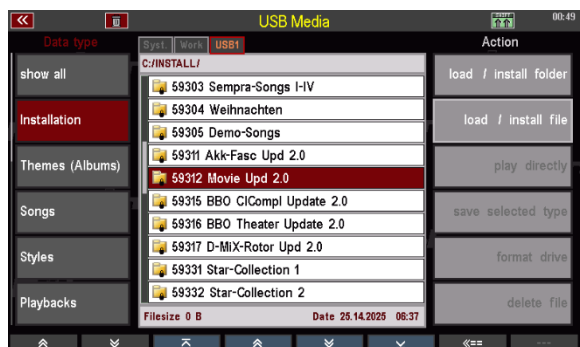
- The sound data is loaded and then the sound memory is defragmented.



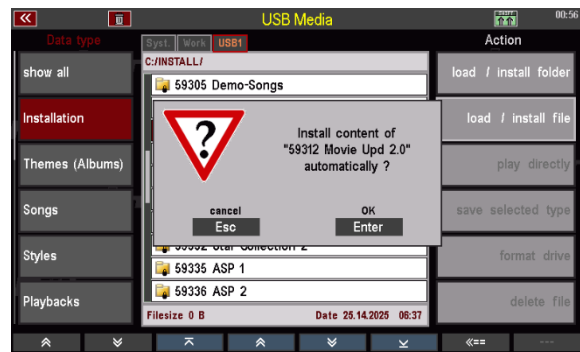
- In the last step, the sound presets are loaded so that you can later select the movie sounds from the SEMPRA sound lists.

Now we install the remaining data (SONG presets and styles) from the folder **59312 Movie Sound Update 2.0**:

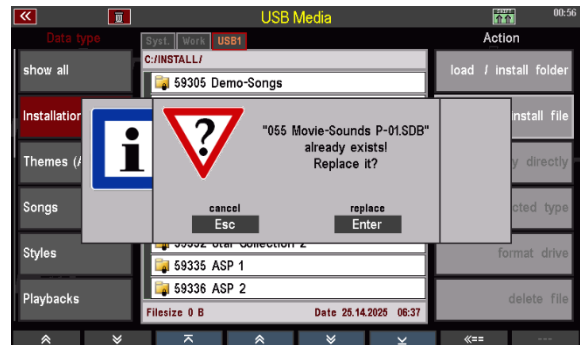
- In the USB menu, place the cursor on the folder **59312 Movie Sound Update 2.0** (do not open the folder!)
- Tap **Load/Install folder** on the right.



- The display asks whether the data should really be installed. Confirm with **[ENTER]**.
- The data is now installed.



- Since the **sound presets** for the MOVIE sound bank were already loaded in the previous step (installation of the sound data), but they are also present in the update folder, you will be asked during the installation whether the **file 055 Movie-Sounds P-01.SDB** should be installed again. You can confirm with **[ENTER]**, the already installed file will be overwritten with the identical file from the new folder.



With this the MOVIE SOUND COLLECTION is completely installed and can be used.

Subsequent installation

For a **subsequent installation** of the MOVIE SOUND COLLECTION into a **newly created user account**, you only need to call up this account and then perform the installation of the 59312 Movie Sound Update 2.0 data folder described on the previous page. This applies e.g.

- if your SEMPRA already equipped with the MOVIE SOUND package has been upgraded to version 2.0 and a new user account for SEMPRA 2.0 has been created according to the instructions, or
- if you create additional new user accounts on your SEMPRA 2.0 in which MOVIE SOUND is to be used.

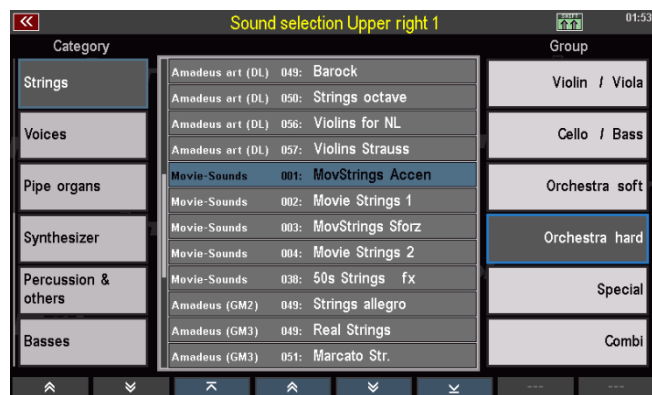
A **new complete installation** as described on page 15 may be necessary if the organ is equipped with further sound modules or if the existing modules are exchanged for new modules in case of service.

The MOVIE SOUND sounds and notes on playing and articulation functions

The 128 sounds of the MOVIE SOUND COLLECTION occupy the sound (preset) bank 55 of your SEMBRA.



The sounds can be selected in the corresponding sound categories or subgroups via the display.



Below you will find an overview of all sounds of the MOVIE SOUND COLLECTION and their respective special features:

- 001-005 **Movie Strings** - different variations of strings for typical cinematic and "worn" soundtrack
- 006 **Movie Horns swell** - mystically swelling horns from new samples
- 007 **Movie StaccHorns** - new staccato movie horns, especially suitable for layering / underlying sounds
- 008 **Movie Horns** - new horns from completely new samples
- 009 **Movie Drums Stereo** - Typical film music percussion instruments from new sample material (stereo)
- 010 **Movie Drums Pan fx** - moving from left to right, including use of the AMADEUS effect (fx) section
- 011 **movie drum panning + new cymbal** at higher velocity
- 012 **Movie Drums Stereo + new cymbal** at higher velocity
- 013 **Movie Percussion Set** - new Movie Percussion Set + Cymbal at higher velocity

- 014 **Movie Gong Stereo** - from new samples with additional sound variation in the higher octaves
- 015 **Movie Cymbal Stereo** - from new samples with additional sound variation in the higher octaves
- 016 **Movie Roll Cymbal Stereo** - from new samples with additional sound variation in the higher octaves
- 017 **Movie Drums Mono** - from new samples
- 018 **Glory Moment** - Flexible film set consisting of new brass, horns and strings (depending on the number of simultaneous played keys are strings and large hornsets added to the Movie Brass Sound)
- 019 **Epic Heros fx** - Heroic sounding film set of horns with DSP effect
- 020 **Dark Showdown Set** - "Dark" film set with special effects, which will sound only when played with stronger velocity and add a real cinema feeling.
- 021 **Movie Voices** - A combination of various new solo voices from new samples
- 022 **Movie Solo Voice 1** - Female Solo Voice from new samples
- 023 **Movie Solo Voice 2** - Female Solo Voice from new samples
- 024 **Duet Voices Set** - 2 solo voices as split sound: New Male Voice in the lower and new Female Voice in the upper part of the manual
- 025 **FemVoice Pad1** - Pad from new Solo Voices
- 026 **FemVoice Pad2** - Pad from new Solo Voices
- 027 **Epic 3 Voices** - 3 voices as a split sound: From new Male Voice samples in the lower and 2 Female Solo Voices in the upper manual range
- 028 **Orchestra bass drum** from new samples + cymbal
- 029 **Orchestra bass drum** from new samples - solo
- 030 **Cinema FX Set** - New "Action/ Science Fiction" movie sound effect set
- 031 **Movie Pad 1** - Movie Synth Pad
- 032 **Movie Pad 2** - Movie Synth Pad + DSP effect
- 033 **Cinema Men Choir** - from new samples
- 034 **Dark Orchestra Bass** - typical orchestra bass sound from new samples (well suited for pedal and as bass layer)
- 035 **Movie Sub Sy** - Moog-like, deep, movie-typical sub-bass synthesizer for bass accompaniment on the pedal or as a layer for e.g. orchestral sounds
- 036 **Movie Orch. Bass** - Bass Strings + Sub Bass for orchestral pedal accompaniment

- 037 **Movie Orch. Bass** - Bass Strings for orchestral pedal accompaniment + gong at higher velocity
- 038 **50's Strings Fx** - Strings in the style/ sound of old movie soundtracks, with DSP effect
- 039 **Marching SN** - Roll & Hit snare drum from new samples
- 040 **Ethno Duduk LS** - Ethno Instrument with new "Live Sample Articulation": Articulated by extra samples just like the real instrument - is simply controlled by velocity
- 041 **Ethno Duduk LS fx** - with DSP effect
- 042 **Mov Firefly Set** - lively-mystical synthesis FX set with new samples
- 043 **Cinema Brass** - new Movie Brass sound with multiple velocity layers, for classic Cinema Brass sounds, from new samples
- 044 **Cinema Brass m** - new Movie Brass sound with multiple velocity layers, for classic Cinema Brass Sounds, from new samples / mono variant
- 045 **Cinema Brass + Effect Processor**
- 046 **Empire Brass Rising** - Cinema Brass + Horn Sounds as a set with tension generating character
- 047 **MovStrings Background** - Movie Strings as a flexible background sound, which can be placed e.g. behind a solo sound and only fades in softly when several keys are pressed simultaneously - for a varied play without changing registrations.
- 048 **French Oboe** - Oboe from new samples, with authentic playing noises, like a real soloist
- 049 **French Oboe fx** - Oboe from new samples + DSP effect
- 050-053 Typical , warm and mystical **movie piano sounds** + DSP effect, and partly with special phrasings with stronger attack
- 054 **Coming Home (Set)** - Movie Electric Piano + Background Strings, these are used for Simultaneous play of several keys gently faded in
- 055+056 more **Movie Piano Sounds** with DSP Effect, with partly higher effect proportion
- 057 **Chamber Grand fx** - Chamber Piano with spatial sound from the listening position of the audience
- 058 **50s Piano fx** - piano sound in the style of the 50s (with DSP effect)
- 059 **Oriental Harp** - new ethno sound of an oriental plucked instrument
- 060 **Porta Violin +** - solo violin with portamento articulation at increased velocity
- 061 **Beatles Mellotron** - classic Mellotron sound, as already used by the Beatles, Yes, Genesis and many others. Through polyphonic playing you create a unmistakable chord sound.

- 062-66 **Uilleann Pipe**- new ethno instrument from new samples. The sound consists of two parts:
1. the bass range, in which a straight tone can be played (in the lower manual range)
2. the melody range, which can be played in the upper part of the manual
Like its real model, this instrument plays only within its natural range . The resulting silent empty space on keys between the bass and melody range is created in this way for sound that is true to the original.
- 062 **Uilleann Pipe** with random effect - different sample articulations are randomly called up
- 063 **Uilleann Pipe Dynamic** - different sample articulations can be controlled by the velocity
- 064 **Uilleann Pipe Pitch** - overblowing with pulling the note in at a stronger velocity
- 065+066 Combination of several **Uilleann Pipes** as pad or octave duet version
- 067 **Monochord LS** - new ethno string instrument from new sample, with "Live Sample Articulation" at higher impact
- 068 **Monochord LS + fx** - Version with effect DSP
- 069 **Monochord LS** as Mono Version
- 070-072 **Concert Harp** - movie-typical harp from new samples, with authentic playing sounds, like a real soloist in two sound variations: Concert Harp 1 + Concert Harp 2
- 070 **Concert Harp** with random playing - different sample articulations are called randomly
- 071+73 **Concert Harp dyn.** - different sample articulations are controlled by the velocity controllable
- 072+74 **Concert Harp fx** - with DSP effect
- 075 **Concert Harp** - extra wide stereo version
- 076-080 **Ethno Log Drum** - new, typical film ethno instrument in different variations (Mono/Stereo - with and without DSP effect)
- 081 **Ethno Log Drum Key** - with key off samples when a key is released
- 082 **Paradise Set** - Orchestra + horns + movie drums, depending on the number of keys struck + Velocity (from new samples)
- 083+84 **Epic Wind Set** - combines ethno sounds with movie strings, depending on the number of simultaneous played keys, including "Live Sample Articulations" at increased velocity
- 085 **MiddleAge Set** - Set for playing folkloric and medieval music
- 086 **Irish Set**- film music set in the style of Irish folklore, depending on the number of keys and velocity changes the instrumentation of the set
- 087 **MovVoc + LogDrum** - Split Sound: LogDrum as accompaniment in the left manual section + new Solo Voice in the right manual section

- 088 **Winter Set fx** - film music set for playing winter / christmas music or for e.g. for advertising soundtracks. The Bell Piano is framed by different sounds, which, depending on the number of simultaneously played keys. An additional "wintery" accent is provided by a carillon at a higher touch and the DSP effect.
- 089 **Folklore Set** - pre-arranged to play folkloristic film music
- 090 **Schalmei solo +** - new ethno instrument with different articulations at different attack
- 091 **Schalmei Duo** (multi choir)
- 092 **Movie Oboe +** - Amadeus Oboe Sound with new articulation at a stronger touch
- 093+094 **Ethno Pad** - new Synth Pad with and without DSP effect
- 095 **Movie Nature Set** - film music set with soft sound from ethno, orchestra instruments and choirs, depending on the number of keys played and the velocity. When the keys are played strongly, orchestral drums can also be heard. By using the modulation wheel, the sound can be modulated additionally in brilliance
- 096 **Big Afri Drum** - African Ethno Drum, good for underlay/ completion of orchestral sounds, such as the "Lion King".
- 097 **Ethno Drum Set** - new Ethno Drums + Orch. Percussion created in splits on the manual (well suited as layer or addition to orchestral presets)
- 098-100 New **bass and pedal sounds** for film music
- 101+102 New **Movie Solo Voices** as mono versions
- 103 **The Impulse Set** - Strings set a crescendo accent, while new Movie Horns and provide for an exciting setup
- 104-106 **Silence Set** - for calm, sustained soundtracks - when several keys are pressed simultaneously, "floating" sounds can be heard when a key is held down (with sustain button) for a longer period of time, underscoring a soft E piano sounding during solo playing (with and without DSP effect)
- 105 another variation of the **Silence Set** with softly fading in background strings
- 107 **Grand Piano + Movie Choir**
- 108 **Morricone Choir 2** - New sound variations from different choir samples
- 109 **Movie Sub Bass + Orchestra Drums** - for bass + pedal playing
- 110+111 **CS Pad** - Pad in the style of a well-known synthesizer for film sounds, in the style of the late 70s and 80s
- 112 **Western Set** - Country and Western Sound Set with different sounds depending on the number simultaneously played keys and velocity

- 113 **Forrest Set fx** - "warm" soundtrack set consisting of different horn and flute sounds - gives a feeling of nature and vastness (the set can also be slightly varied in its brilliance by using the modulation wheel)
- 114-118 New **synthesiser sounds**, partly with DSP - can be created by pressing the Modulating the modulation wheel in the sound
- 119+120 **Church Set** - Setup for playing sacral sounding music - depending on the number of keys played simultaneously, solo voices, movie choir, church organ, trumpet and movie strings are played
- 121-124 **Movie Choir Sets** - New, versatile choirs, built up from a female solo voice, an alto voice for two voices, a tenor voice for three voices and a large choir for polyphonic, full performance. Variations with and without effect DSP
- 125 **Classic Set** - music set consisting of violin, flute + oboe accompanied by large stereo strings playing several keys simultaneously. Depending on the velocity and number of keys played, an additional instrument is arranged similar to the Movie Choir Set (especially suitable for playing classical and film music).
- 126 **Classic Set 2** - music set of clarinet + flute, with large stereo strings at playing several keys at the same time, as well as a further brass voice (especially good suitable for playing classical and film music)
- 127+128 New **synthesiser lead** sounds, some with DSP effects, can be modulated steplessly by turning the modulation wheel

LIVE SOUND ARTICULATION:

Some of the Movie Sounds offer with "Live Sound Articulation" (LS) in addition to the new samples real and expressive articulation variants of their real instrument models, for more authenticity when playing. They can be easily controlled by velocity or by the already programmed playing aids (see sound Descriptions above).

MOVIE SETS:

The new "Movie Sets" offer fully arranged combination sounds already in just one sound, without the need to layer, split or create global presets - just for instant play. These sets contain different articulations, as well as complementary and alternating sounds, depending on the number of keys played, velocity and preset.

They are oriented to different (movie) music styles, timbres and uses for new, intuitive playing and quick sound selection.

Further notes:

Some sounds play - for a sound behavior as realistic as possible - exclusively within their range given by the real original instrument. This way they always sound authentic and natural. Outside of these ranges, many of the sounds repeat in the higher registers.

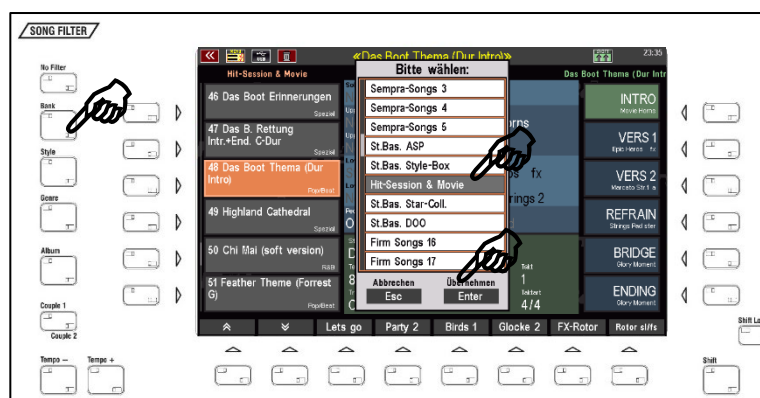
"fx" – indicates the use of the internal AMADEUS effect DSP.

SONG presets with example registrations

For SEMBRA 2.0 we have equipped the MOVIE SOUND COLLECTION with a new selection of sample registrations. The corresponding SONGs are partly specifically designed for the interpretation of certain titles or movie themes, but partly also -as sound or style basics (One Touch Presets) for certain sounds or the MOVIE Styles also installed with the package.

The SONGs for the MOVIE SOUND COLLECTION can be found in the Firm Song banks 01 „Sound Basics“ and 13 „Hit Session & Movie“.

- To call up these banks directly, tap twice on the SONG filter button [Bank] to the left of the display and select the **Sound Basics** or **Hit Session & Movie** bank with the cursor in the selection list in the display.



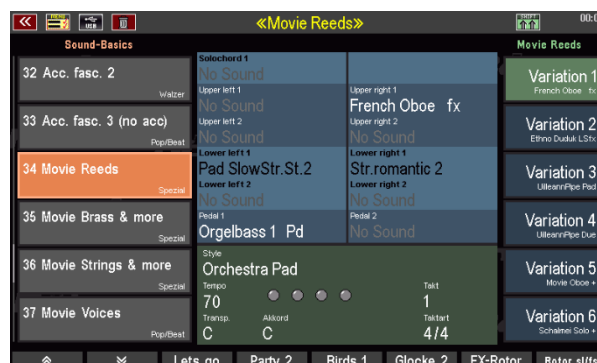
- Confirm your selection in each case with [Enter].

The respective bank is now active and the SONGs of the bank can be called up in the display.

MOVIE registrations in the Firm SONG bank 01 “Sound Basics”:

On places **34...37** of this bank you will find SONGs with 6 registrations each, arranged for specific instrument groups:

Bank	Number	Name
101	034	Movie Reeds
101	035	Movie Brass & more
101	036	Movie Strings & more
101	037	Movie Voices



Movie registrations in the Firm SONG bank 13 “Hit Session & Movie”:

On places **46...57** of this bank you can find SONGs with registrations arranged for specific titles or movie themes:

Bank	Number	Name
113	046	Das Boot Erinnerungen
113	047	Das B. Rettung Intr.+End. C-Dur
113	048	Das Boot Thema (Dur Intro)
113	049	Highland Cathedral
113	050	Chi Mai (soft version)
113	051	Feather Theme (Forrest G)
113	052	Star Wars
113	053	C'era una volta Ennio M.
113	054	Crockets theme
113	055	Nessaja
113	056	Auld lang syne (military)
113	057	Elisabeth Serenade

On positions **59...64** you will find the SONGs with the style basics for the MOVIE styles:

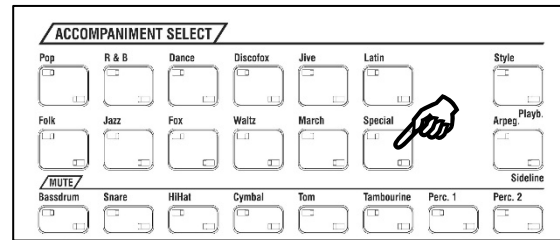
Bank	Number	Name
113	059	6-8 Orchestra Pad
113	060	Doldinger D. Boot (3 Szen.)
113	061	Movie Slow-Rock
113	062	Movie Drums
113	063	Blockbuster Orch.-march
113	064	Miami synths

You can find the Movie Style Basics also with activated SONG filter buttons [STYLE] + [GENRE].

- Switch on these two SONG filter buttons in combination (the LEDs in both buttons light up).



- In addition, select the [Specials] button in the accompaniment category button group.



In the SONG list now available in the display you will also find, among other things, the Style-Basic SONGs for the new MOVIE styles.



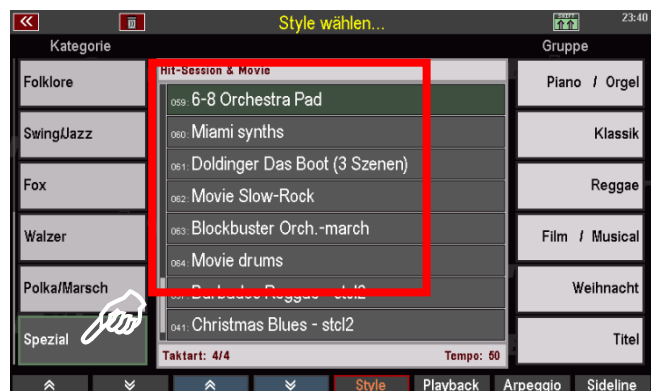
6 new MOVIE styles

In the style selection you will find the 6 new MOVIE styles in the category **Special** (groups **Film/Musical** and **Classics**):

Firm style bank 13

“Hit Session & Movie”

Bank	Number	Name
113	059	6-8 Orchestra Pad
113	060	Miami synths
113	061	Doldinger Das Boot (3 Szenen)
113	062	Movie Slow-Rock
113	063	Blockbuster Orch.-march
113	064	Movie Drums





Keyswerk Musikelektronik GmbH

Warbersche Str. 32

31675 Bückeburg

Germany

Tel.: 05722 905088

Internet www.bohm-organs.com

E-Mail info@boehm-organs.com