

Böhm
ORGELN | KEYBOARDS

SEMPRA 2.0

Installation and playing instructions

BÖHM – FAMOUS ORGANS

CLASSIC

COMPLETE



BÖHM FAMOUS ORGANS - CLASSIC COMPLETE
for SEMPRA 2.0 – installation and playing instructions

version 1.00, 11.01.2022
Art.-No. 42316AE

The information contained in this documentation may be changed without announcement and are subject to change without notice by Keyswerk Musikelektronik GmbH & Co. KG does not represent an obligation.

The description contains the current state of information at the time of going to press.

Changes of technical details compared to the descriptions, the information and illustrations in this manual are subject to change without notice.
Keyswerk Musikelektronik GmbH assumes no liability for program errors and for incorrect information in the documentation and its consequences.

© Keyswerk 2022
All rights reserved

Responsible for the content of this website
KEYSWERK Music Electronics GmbH
Warbersche Str. 32
31675 Bückeberg
Germany
Phone: 05722 - 905088
Fax: 05722 - 287555
Internet <http://www.keyswerk.de>
E-mail info@keyswerk.de

Content

General	4
The stops	4
SONGS/global presets (Setzer)	6
Pedal instruments	6
The SONG banks	6
Shortcuts used in the SONG names.....	7
The exclamation mark in the SONG name "!"	7
CLASSIC COMPLETE button preset.....	7
Further playing notes	8
Set up swell upper manual	8
CLASSIC COMPLETE installation:	10
1. Complete CLASSIC COMPLETE new installation.....	11
2. Installation only CLASSIC COMPLETE Update 2.0	13
Calling up CLASSIC COMPLETE Sounds and SONG Presets	14
SONGS/Presets	14
CLASSIC COMPLETE button preset.....	16
Appendix.....	17
Soundpresets (single and combination stops)	17
SONGS (Setzer) „CLASSIC COMPLETE“	19

General

Since the beginning Böhm organs have been performing extraordinary especially in the field of classical and sacred organ music! With the software package CLASSIC COMPLETE from the package series **Böhm - Famous Organs (BFO resp. German: BBO)** you can experience the whole world of classical organ music on your SEMPRA in a perfection that has probably never been heard before from an electronic "universal" organ!

In the present version for SEMPRA 2.0 we have again significantly expanded CLASSIC COMPLETE. With more than 240 single stops and stop combinations as well as 2 banks with 43 and 64 perfectly arranged SONGs sorted by stop types, each with 6 single presets (Setzer), you can play the works of the great masters in a tonal perfection like on a great church organ. In the 2.0 version, the registrations in CLASSIC COMPLETE now make extensive use of the new "Distance" version, which allows you to position the individual pipe works or stops in the registrations individually in the depth of the room. Depending on the intensity, you can use this parameter to achieve different auditory impressions that correspond (more directly) to the impression of the organist playing directly at the organ or (more diffusely) to the impression of the listeners in the nave, for example.

The stops

The tonal basis of CLASSIC COMPLETE are the excellent samples from the basic package "Böhm - famous organs". The stops and stop combinations of the church organ sounds have been created from these samples. The installation of the samples of the basic package "Böhm - Famous Organs" is therefore a prerequisite for the use of CLASSIC COMPLETE.

On the **sound banks 20 (BBO Toccata)** and **23 (BBO Sakral)** the organ-usual basic stops are present. The sounds of **sound bank 23 (BBO Sakral)** are intonated very "straight", close to the original sample. They are programmed especially voice-saving (number of sounding "generators"), so that a wide registration can be built up in all playing situations. Nevertheless, these stops and stop combinations sound balanced and versatile.

Sound combinations such as principals 8'- 4'- 2' are available on the bank 23 in two variants: on the one hand as a whole recording and on the other hand consisting of actually individually existing stops which are put together to form the respective combination. The latter combination, of course, sounds much wider, since here the integrated **C/C# separation** (radiation of the individual notes from different positions within the stereo base, as with a real pipe prospect) comes into full effect. The whole recording, on the other hand, sounds rather centered. This characteristic, in turn, can be exploited very well when certain other stops are to be positioned around it. So, both types of combination have their justification depending on the application! Also, with the mixtures there are these variants of total recordings on the one hand and stops composed of individual components on the other hand.

The registers of sound bank 23 have a narrower C/Cis separation than the registers of bank 20. If you now use registers from both banks, you can build up extremely wide and yet differentiated sound patterns. Depending on the playback system used, the positions of the stops can be optimally reproduced. Some organ pipes seem "close enough to touch".

If available on your SEMPRA, you should also experiment a lot with the "**Distance**" function from the SEMPRA function app "Sound Controller" (Art. No. 41153) when creating your own registrations. Thus, they achieve not only a width effect through the different right/left panoramas, but also a depth gradation of the stops.

You can determine whether the app is already installed on your organ in the menu 8 System settings - 4 Releases. A green check mark here indicates the enabled release in the "Sound Controller" line. If the app is not currently enabled on your instrument, it is strongly recommended that you purchase it here, as the registrations of the Classic Complete package in the 2.0 version also make extensive use of this valuable function and thus only develop their full sonic potential when the distance function is available. (for more details see price list, or on request).

The **sound bank 20 (BBO Toccata)** is also based on the samples of the "Böhm famous organs" extension. However, due to the simultaneous use of several sample components, other variations of the stops are available here. Especially in solo playing these stops show an incredible liveliness. However, this exquisite sound behavior of the individual stops also costs correspondingly more polyphony voices. There are definitely single registers that consume 3 or 4 generators when pressing one key. Especially when playing on the "smaller" SEMPRA models with only one AMADEUS sound system, this should be taken into account when setting up own registrations. With the optional Part-Expansion 1 and 2 incl. a second AMADEUS sound module you are of course on the safe side here and can use the various registration possibilities even more flexibly. For those who like to play a lot of classical organ music on their SEMPRA, these extensions are especially recommended (for more details see price list, or on request).

However, in order to be able to register fully and versatily with only one existing sound system, it is best to combine registers from both sound banks 20 and 23.

The sophisticated sound and volume adjustments as well as the C/Cis loading separation form the core pieces of the CLASSIC COMPLETE software, in addition to the high-quality sample material. Many different organs (originals and modern digital organs) were listened to and analyzed during the creation of this software. From the results we have selected the best for you.

The Böhm organ with its flexible sound system allows the organist to register both strictly according to epochs and completely freely and creatively. At this point, the Böhm is certainly the only digital organ that allows you to combine so quickly and yet flexibly, without first having to load other samples or voicings.

A list of all single and combination registers contained in the two sound banks can be found in the appendix to these operation instructions.

SONGS/global presets (Setzer)

To start you playing right away, CLASSIC COMPLETE provides you with 2 banks of 43 and 64 SONGS respectively. Each of these SONGs contains 6 individual registrations (global presets or setters), which were created true to style from the single and combination stops of the software.

In many presets it is possible to add a **tremulant** with modulation wheel 1.

By the way: In almost all CLASSIC COMPLETE registrations we have kept the volume of the single stops mainly at a value of 110. This allows a quick adjustment also upwards (up to 127).

Pedal instruments

The tonal foundation of the church organ is, of course, the pedal with its special bass stops. And while in popular music a single bass timbre is often sufficient (after all, every band usually has only one bass player), in the (pipe) organ the pedal also lives from the sound variations resulting from the various stops and combination possibilities. Here, as in the manuals, several stops are usually combined to create an overall timbre for the pedal.

To make a combination of several pedal registers possible even with the standard configuration of the SEMPRA models SE10...SE40, the CLASSIC COMPLETE package includes a **part extension to a second pedal instrument** for these models. With the bigger models or with existing optional part extensions, a second or additional pedal instruments are then possible anyway.

The SONG banks

The SONGs belonging to the CLASSIC COMPLETE package occupy the following firm song banks:

Firm Songs 20: Bank „**Sakral**“ (37 + 6 SONGs)

Firm Songs 21: Bank „**Toccata**“ (64 SONGs)

The SONGS themselves, as well as the 6 registrations they each contain, are sorted in ascending order of register fullness. On the lower places you find solo registrations and smaller combinations, on the upper places larger combinations up to large plenum registrations and the full work. The SONG designations give you information about the contained register characters in each case.

Shortcuts used in the SONG names

- H:** "Handbass": The bass is played on the manual analogous to pedal-less pipe organs
DIR: direct sound, shorter reverb (2 sec.), corresponds to the listening position at the console (SONGs 38 - 64 in the bank "Toccatà")
T: Toccatà (SONG bank 21)
ZR: German „Zungen Register“ = Reed stops

The exclamation mark in the SONG name "!"

You might be surprised that all SONG names start with an exclamation mark "!" Quite simply: With this we achieve that with unfiltered SONG list (SONG filter button **[No filter]** selected) the SONGs appear at the top position of the SONG list, since the SEMPRA places such special characters in the sorting before the actual alphabet and/or also the numbers.

So, if you play mainly classical music on your SEMPRA, you will find this sorting very convenient, since the sacred SONGs always appear at the top of the SONG list. You are free to keep this principle also for your self-created SONGs.

CLASSIC COMPLETE button preset

The CLASSIC COMPLETE package includes a dedicated assignment (button preset) for the F-buttons below the display. Vocal phrases such as "Kyrie", "Hallelujah" and "Amen" as well as various bell effects can be called up here:



Dieses Taster-Preset wird von den CLASSIC COMPLETE SONG-Presets verwendet und mit diesen aufgerufen, sofern das Umschalten der Taster-Belegungen durch die SONG-Presets nicht durch die aktuelle Einstellung des Preset Kopplers (Taster **[Coupler]** links vom Display) unterbunden wird (Haken gesetzt bzw. nicht gesetzt).

Further playing notes

In all registrations the tracks of the style accompaniment are muted, recognizable by the lit LEDs in the [Mute] buttons for the accompaniment groups **Drums**, **Bass** and **Combo 1...3**. Therefore, neither drums nor accompaniment can be heard when you press the [Start] button with a CLASSIC COMPLETE preset called up. The mutes must first be cancelled to hear the accompaniment.

A pipe organ does not know a keyboard split! Therefore, all registrations of the CLASSIC COMPLETE package do not contain a global split point in the lower manual. This setting (lower split canceled) has been stored in the individual presets.

If you return from a CLASSIC COMPLETE preset e.g. to a "normal" factory SONG preset, the global lower split point will probably not be set again, because it is not available as a function in the newly selected preset.

Therefore, press the **[Clear Reg.]** button 1x before returning to the standard presets from playing with CLASSIC COMPLETE. This ensures that the global lower split intended for the standard presets is preset again.

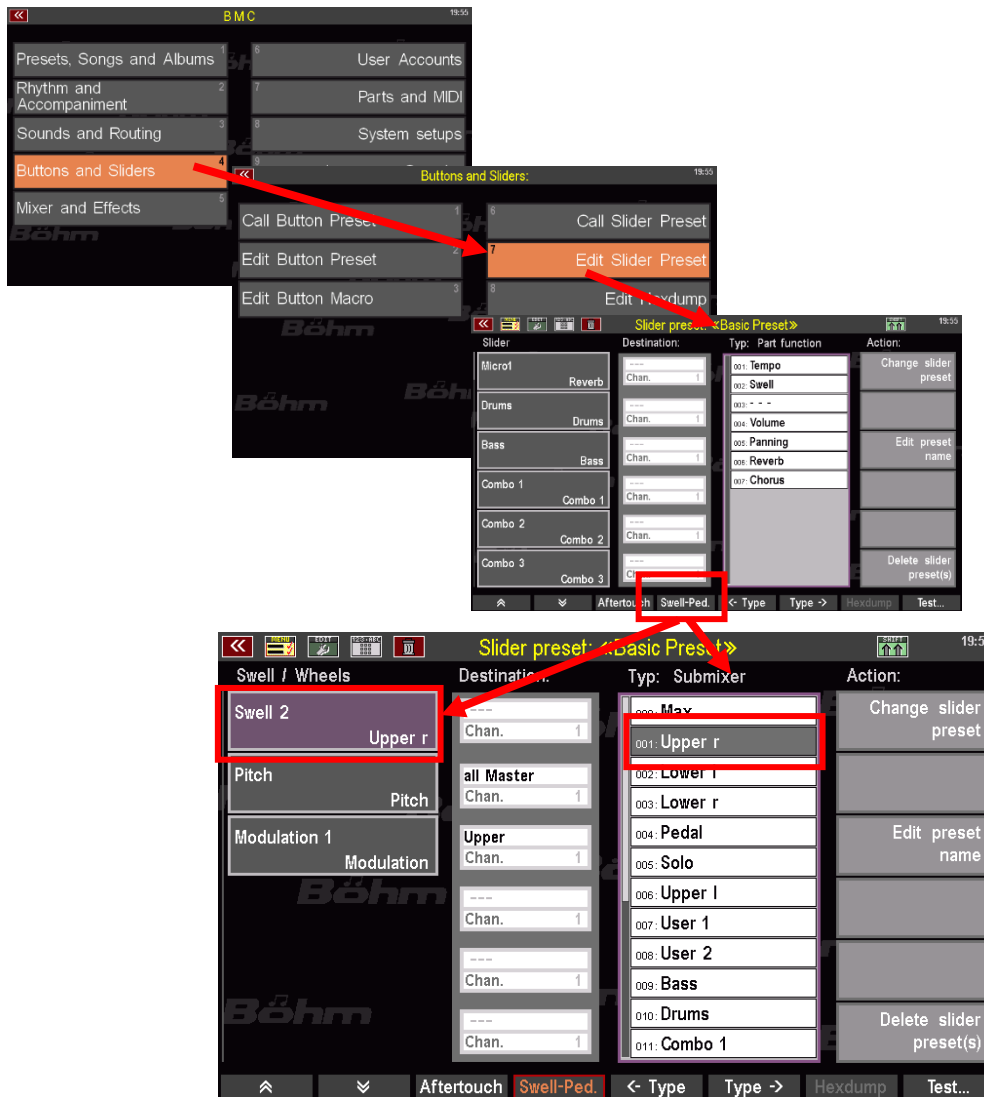
Our sample SONGS/presets are intended to show you a wide cross-section of registration and style variants. Of course, you should - after a first musical journey of discovery through the software on the basis of these examples - register your organ yourself the way you like it or feel it to be optimal. The best tonal basis for this is now available to you with CLASSIC COMPLETE.

But now you should start right away! In the following section of these operating instructions we will explain how you can install the CLASSIC COMPLETE package on your SEMPRA.

Set up swell upper manual

On many pipe organs we find the "**Hauptwerk**" without swell influence on the lower manual (usually labeled "Manual I") and the swell-dependent "**Swell**" on the upper manual (Manual II). On SEMPRA organs with 2 swell pedals (e.g. SE100) you can easily set up a swell function for the upper manual:

We achieve the swell function for the upper manual by assigning the submixer **Upper right** to the freely assignable **swell pedal 2** in a separate slider assignment:

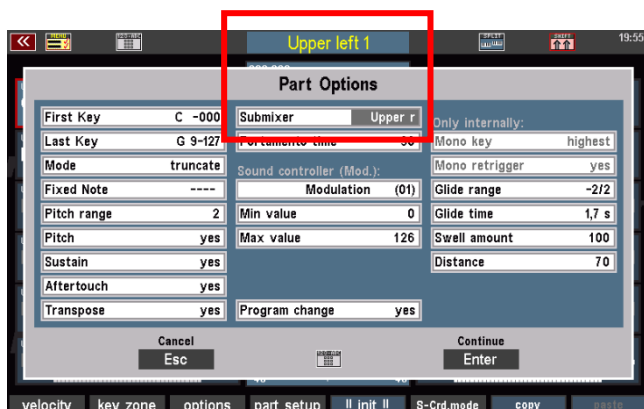


ATTENTION: For more detailed explanations on how to create controller presets, please refer to the operating manual of your SEMBRA.

In order for this control function to work accordingly, the **Upper Right** submixer was set as a volume control in all Upper Parts within the factory BBO presets.

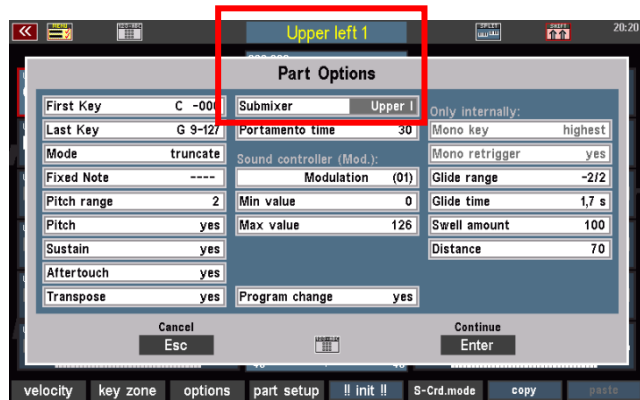
Attention: This means that the submix assignment of the **Upper left** parts in these church organ registrations differs from the standard assignment (left parts on Upper left submixer)!

The corresponding **Upper Left** slider or drawbar is therefore ineffective when playing the BBO Classic Complete presets! All parts/stops of the upper manual react to the submix slider/drawbar **Upper Right** instead!



If we now place the **Upper Right** submixer in a control preset on swell 2 as described above, we can use the swell 2 to control this submixer (in parallel with the corresponding slider/drawbar). The lower manual and, if existing, the solo manual as well as the pedal are not affected by this swell pedal 2 and remain at unchanged volume as long as the main swell pedal (swell 1) is not operated. Swell 1 continues to control the volume of all manuals and the pedal, including the swell.

If you want to place additional Parts/stops on the swell pedal 2, or if you want to play certain Parts/stops of the Upper Manual independently of the swell 2, you can of course change the submix assignment in the Part options of the desired Parts. For example, if you exchange the **Upper Right** submixer to **Upper Left**, the corresponding part no longer reacts to the swell pedal 2.



CLASSIC COMPLETE installation:

When installing CLASSIC COMPLETE for SEMPRA 2.0, the required data (sample and sound data for the AMADEUS sound module(s), the sound presets and the SONGS/Global presets) are installed from the installation folder of the data stick you received with your SEMPRA.

A prerequisite for the use of the CLASSIC COMPLETE package is the presence of the special samples from the "Boehm - Famous Organs" extension. This is therefore installed with the first installation step (see also notes in the following description of the full installation).

If there are several AMADEUS sound systems in your SEMPRA, the installation of the sound data can be done automatically for all sound systems at the same time.

Note: For the SEMPRA organs SE70/80/100 or 480/500SE/600SE, the BBO packages CLASSIC COMPLETE and Theater Organ are part of the standard equipment and are already pre-installed in the standard account. However, if these instruments are upgraded to SEMPRA 2.0, the CLASSIC COMPLETE Version 2.0 update must be reinstalled in the 2.0 user account, as is the case for all other models. See the following step 2. **Install Classic Complete Update 2.0.**

1. Complete CLASSIC COMPLETE new installation

This complete installation is only necessary once, namely when you purchase BBO CLASSIC COMPLETE new for your SEMPRA 2.0 and install it for the first time.

You will receive the following folders on the associated installation USB stick for the Amadeus generation present in your SEMPRA ("...Amadeus" = Amadeus2, "...Pro-D" = Amadeus Pro-D).

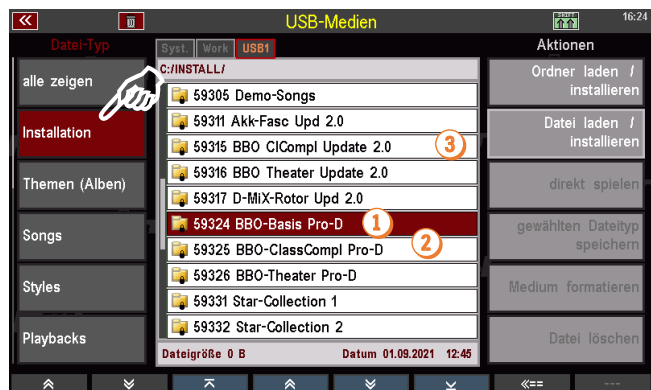
- Insert the installation stick into the SEMPRA and press the [USB] button to open the USB menu.
- In the left column of the USB menu, tap the **Installation** field.

The following folders must be installed in the order given by the following numbering for a complete new installation of BBO CLASSIC COMPLETE:

① **BBO-Basis**
Contains the activation for the basic Samples of the BBO packages

② **BBO-ClassCompl Pro-D / Amadeus**
Contains the previous version of CLASSIC COMPLETE incl. the sound data for the Amadeus sound module(s).

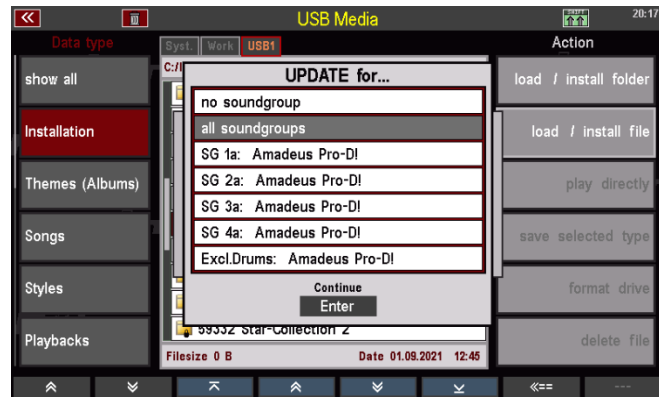
③ **BBO ClComp. Update 2.0**
Updates the previous data to the SEMPRA 2.0 Version.



- Select the first folder to be installed, i.e. **BBO-Basis...** with the cursor and tap **load/install Folder** on the right.
- The display asks whether the data should really be loaded.
- Confirm with [Enter].



- If there are several AMADEUS sound modules in the organ, the display now asks on which sound module(s) the update should be installed. The easiest way is to select "all soundgroups". This will install the update to all existing AMADEUS modules at the same time.



- Alternatively, you can also select a specific module (SG1a, SG2a...). With the selection "no soundgroup" you can skip the installation of the data.
- The data is now loaded into all or the selected sound module.

ATTENTION: If you install the software again later, e.g. into a newly created user account, it is no longer necessary to reinstall the BBO-Basis folder, since this data is already on the AMADEUS sound module(s) after the initial installation.

- Now install the folder **BBO-ClassCompl Pro-D /Amadeus**. Again you will be asked during the installation in which sound module the sound data should be installed. Select here again "all sound groups", or the sound system in which you want to install the data. By selecting "no sound group" you can skip the installation of the sound data. Afterwards the further data (sound presets, SONG presets, button assignments) are installed directly.



Note: If the sound presets or SONGS already exist, you will receive a corresponding message from the display for each file to be installed. Confirm these messages with **[Enter]** to reinstall or cancel with **[ESC]** to continue using the existing data.

- The last thing to do is to load the folder **BBO CIComp. Update 2.0**. This will update the previously loaded data to the new version for SEMPRA 2.0.



- The BBO – CLASSIC COMPLETE software is now fully installed and can be used.

ATTENTION: If you want to perform a new installation of Classic Complete later, e.g. in a newly created user account, you only need to install the folder BBO CIComp. Update 2.0. All the required data will then be available in the new account.

2. Installation only CLASSIC COMPLETE Update 2.0

This type of installation is sufficient if...

- you have upgraded your existing SEMPRA with the previous version of Classic Complete to SEMPRA 2.0,
- you create a new user account on your SEMPRA 2.0 in which Classic Complete is also to be used.

In this case, the samples and sound data for the BBO packages are already available on the AMADEUS sound module(s) of your SEMPRA and do not have to be installed again.

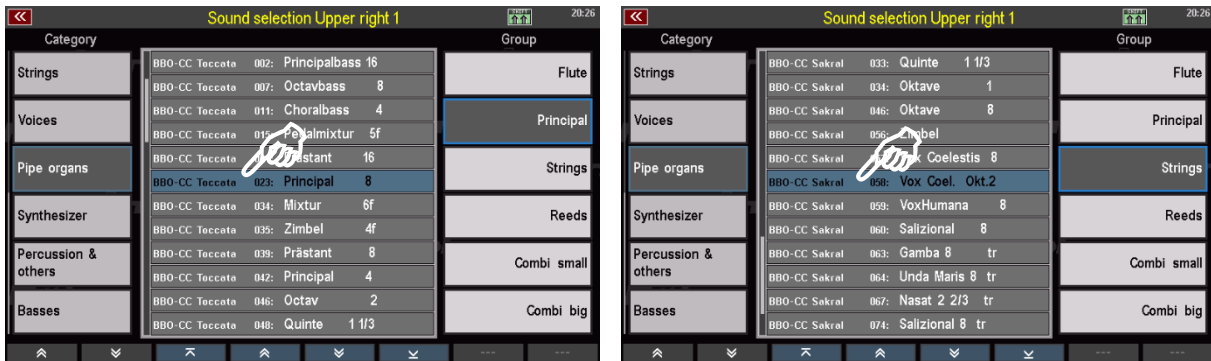
- You only need to install the folder **BBO CIComp. Update 2.0** from the factory stick. This will install the sound presets and the SONG presets (registrations) of the new Classic Complete version for SEMPRA 2.0 into the instrument.



Calling up CLASSIC COMPLETE Sounds and SONG Presets

Call up single sounds

The CLASSIC COMPLETE **sounds** (i.e. the single stops and combinations) can be found in the sound group "Pipe Organ" on the sound places of the banks **20 BBO-CC Toccata** and **23 BB-CC Sacral**:

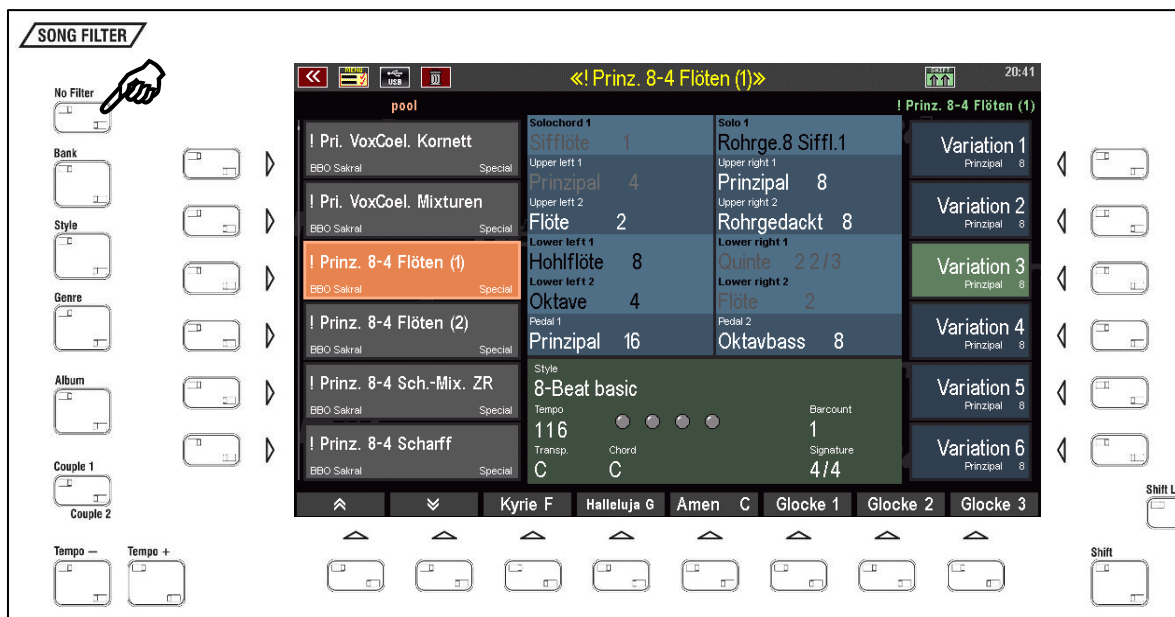


Of course, you can use these sounds for your own registrations/SONG presets as you wish.

SONGs/Presets

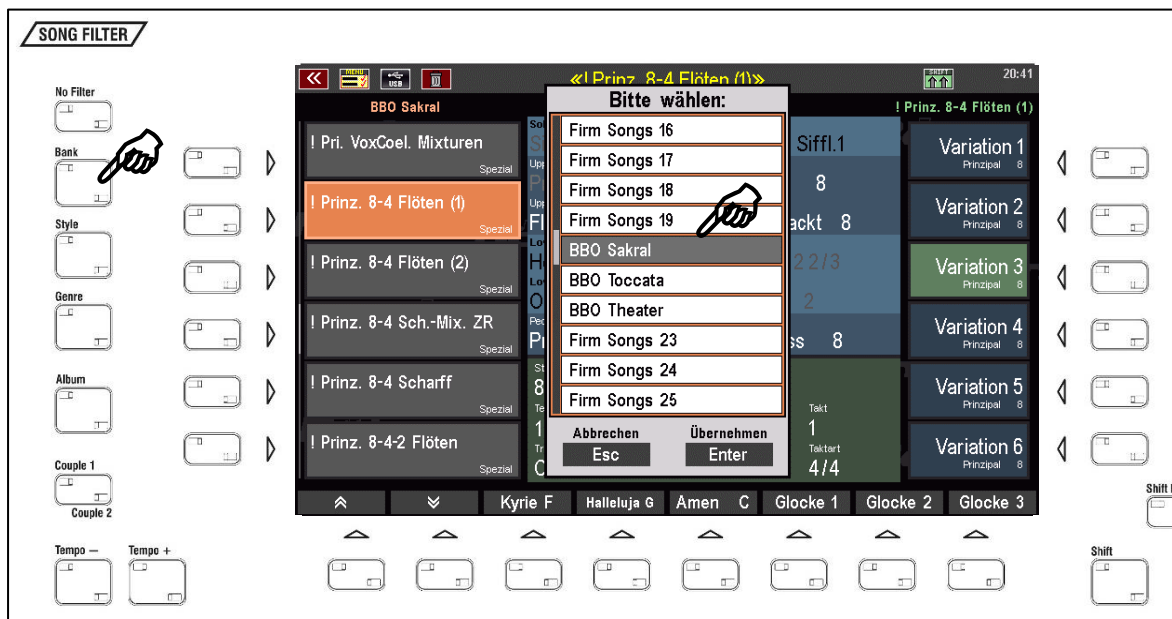
If no SONG filter function is activated (button [No Filter] in the SONG Filter group is active), the total list of all SONGS currently installed in the SEMPRA is available on the left side of the display and can be scrolled e.g. with the data wheel.

In this case, the SONGs of the Classic Complete package can be found at the beginning of the total list. This positioning is achieved by the exclamation mark in front of the SONG names „!“.



Via the F-button functions **[Shift] + [ABC]** or **[1 2 3]** you can determine whether the display should be in alphabetical or numerical order. Since all CLASSIC COMPLETE SONGs contain the exclamation mark, there is no mixing with the other installed SONGs in this list area. So you can quickly orientate yourself in the area of the CLASSIC COMPLETE SONGs in both sortings.

SONG Filter [Bank] activated: The CLASSIC COMPLETE registrations can be found on the SONG banks **120 BBO-CC Sacral** and **121 BBO-CC Toccata** (press SONG filter button **[Bank]** 2x to get to the bank selection, confirm selected bank with **[Enter]**):



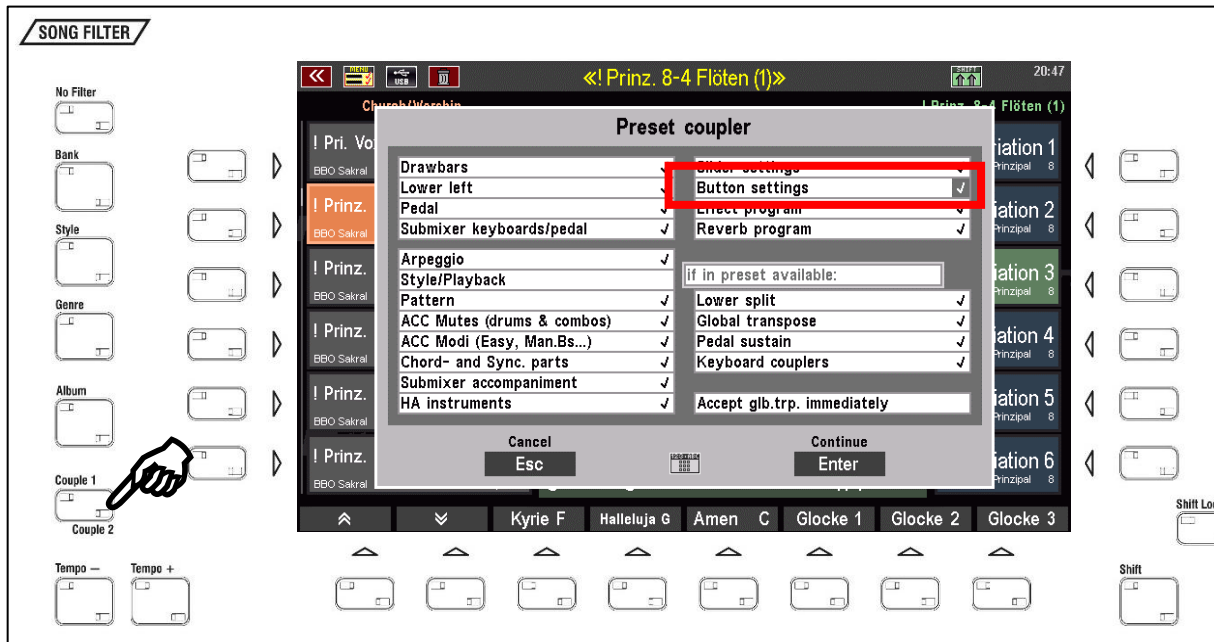
SONG Filter [Genre] activated: The CLASSIC COMPLETE registrations can be found in the "Church/Worship" genre. Tap 2x on the filter button **[Genre]** to see the selection list of genres in the display. Select here the genre "Church/Worship" and confirm with **[Enter]**.



CLASSIC COMPLETE button preset

The SONG presets of the CLASSIC COMPLETE package use a special button preset (modified assignment of the F buttons below the display, see page 7).

For this setting to be recalled with the Sacred SONG presets, recalling of key assignments by the presets must be enabled in the **PRESET COUPLER** settings:



Of course, you can also call up the button preset manually via the BMC menu, e.g. in order to use it in your own SONG presets as well:

- The button preset **F-56: Sacral 1** can be accessed via the menu **Buttons & Sliders (4) / Call up button preset (1)**:
- Confirm with **[Enter]** to activated the button preset.



Appendix

Soundpresets (single and combination stops)

Bank 20

1	Großprästant 32
2	Principalbass 16
3	Subbass 16
4	Stillbordun 16
5	Violonbass 16
6	Quintbass 10 2/3
7	Octavbass 8
8	Holzgedeckt 8
9	Violoncello 8
10	Quintged. 5 1/3
11	Choralbass 4
12	Hohlpfeife 4
13	Basset 2
14	Rauschquinte 2f
15	Pedalmixtur 5f
16	Contraposaune 32
17	Bombarde 16
18	Trompete 8
19	Schweizer Trom.8
20	Clarine 4
21	Prästant 16
22	Pommer 16
23	Principal 8
24	Hohlpfeife 8
25	Gambe 8
26	Unda Maris 8
27	Octav 4
28	Blockflöte 4
29	Spitzgambe 4
30	Quinte 2 2/3
31	Superoctav 2
32	Offenflöte 2
33	Kornett 5f
34	Mixtur 6f
35	Zimbel 4f
36	Posaune 16
37	Trompete 8
38	Trompete 4
39	Prästant 8
40	Rohrflöte 8
41	Salizional 8
42	Principal 4
43	Spitzflöte 4
44	Fugara 4
45	Quinte 2 2/3
46	Octav 2
47	Bauernpfeife 2
48	Quinte 1 1/3
49	Octav 1
50	Sesquialtera 2f
51	Terzian 2f
52	Mixtur 4f
53	Zimbel 4f
54	Fagott 16
55	Trompete 8
56	Oboe 8
57	Gedeckt 8
58	Gemshorn 8
59	Quintadena 8
60	Prästant 4
61	Rohrflöte 4
62	Quintadena 4
63	Nasat 2 2/3
64	Octav 2

Bank 23

1	Kontrabordun 32
2	Prinzpal 16
3	Subbass 16
4	Gedackt 16
5	Violon 16
6	Oktavbass 8
7	Gedackt 8
8	Choralbass 4
9	Flöte 4
10	Pedalmixtur 4-f.
11	Fagott 16
12	Trompete 8
13	Klarine 4
14	Pedal Plenum
15	Prinz.16 Sub.16
16	Prinz.16-8 Sb.16
17	Pr.Sb.16-8 Fl.4
18	Pr.16-8 Sb.Vio16
19	Pr.16-8 Sb.Fag16
20	Pr.16-8 Plen Fag
21	Gedackt 8 Fl. 4
22	Oktavb. 8 Ged. 8
23	Prinzpal II 16
24	Prinzpal 8
25	Rohrgedackt 8
26	Gamba 8
27	Unda Maris 8
28	Oktave 4
29	Flöte 4
30	Nasat 2 2/3
31	Superoktave 2
32	Terz 1 3/5
33	Quinte 1 1/3
34	Oktave 1
35	Kornett 3-fach
36	Scharff 4-fach
37	Mixtur 5-fach
38	Oboe 8
39	UndMar+Gemsh. 8
40	Prinzpal 16-8-4
41	Prinzpal 8-4-2
42	Prinz.8-4-2-Mixt
43	Prinz.16-8-Schar
44	Plenum
45	Gedackt 16
46	Oktave 8
47	Hohlflöte 8
48	Gemshorn 8
49	Prinzpal 4
50	Hohlflöte 4
51	Quinte 2 2/3
52	Flöte 2
53	Terzian 1 3/5
54	Rohrflöte 1 1/3
55	Sifflöte 1
56	Zimbel
57	Vox Coelestis 8
58	Vox Coel. Okt.2
59	VoxHumana 8
60	Salizional 8
61	Prinzpal 8 tr
62	Rohrgedackt 8 tr
63	Gamba 8 tr
64	Unda Maris 8 tr

Bank 20

65	Waldflöte	2
66	Terz	1 3/5
67	Larigot	1 1/3
68	Siffflöte	1
69	Hörnlein	2f
70	Scharff	4f
71	Dulzian	8
72	Krummhorn	8
73	Vox humana	8
74	Bourdon doux	16
75	Montre	8
76	Bourdon en bois	8
77	Flute harmoniq	8
78	Voix celeste	8
79	Eolienne	8
80	Prestant	4
81	Cor de nuit	4
82	Flute travers	4
83	Viole celeste	4
84	Douce	4
85	Nasard fl.	2 2/3
86	Doublette	2
87	Flute	2
88	Tierce	1 3/5
89	Harm.aetherea	4f
90	Fourniture	4st
91	Basson	16
92	Trompette	8
93	Hautbois	8
94	Clairon	4
95	Trompeta imp.	32
96	Trompeta mag.	16
97	Trompeta real	8
98	Clarin brillnt.	4
99	Clarin batalla	2
100	Orlos	8
101	Prästant tr.	8
102	Rohrflöte tr.	8
103	Salizional tr.	8
104	Principal tr.	4
105	Spitzflöte tr.	4
106	Fugara tr.	4
107	Quinte tr.	2 2/3
108	Quinte tr.	1 1/3
109	Sesquialt.tr.	2f
110	Terzian tr.	2f
111	Oboe tr.	8
112	Prin.4+oct.2 tr.	
113	Spfl.4+oct.2 tr.	
114	Spfl.4+bpf.2 tr.	
115	Wind 1 l/r	
116	Wind 1 r/l	
117	Wind 2 l/r	
118	Wind 2 r/l	
119		
120		
121		
122		
123		
124		
125		
126		
127		
128		

Bank 23

65	Oktave	4 tr
66	Flöte	4 tr
67	Nasat	2 2/3 tr
68	Superoktave	2 tr
69	Terz	1 3/5 tr
70	Quinte	1 1/3 tr
71	Oktave	1 tr
72	Oboe	8 tr
73	UndMar+Gemsh.	tr
74	Salizional	8 tr
75	Ged. Oboe	8 tr
76	Hohlflöte	8 tr
77	Gemshorn	8 tr
78	Quinte	2 2/3 tr
79	Flöte	2 tr
80	Siffflöte	1 tr
81	Hohlfl8 Pr.	8-4-2
82	Rohrge.8 Siff.	1
83	Hohlfl.8 Rfl.	113
84	Ho.FL8 FL2 FL113	
85	Rohrflöten	8-4
86	Flötensatz	8-4-2
87	R.fl.8 S.fl.1 tr	
88	Ged. 8+2 2/3 tr	
89	Gedackt	8+2 2/3
90	Prinz.	8 Oktav 4
91	Pr.8 Okt.4 S.okt	
92	Pr.8 Oktav	4-2-1
93	Gedackt	8Gambe 8
94	Ged.	8-4 Gambe 8
95	G.8-2 2/3Gambe	8
96	Ged.	8-4-2 Gam.8
97	Gedackt	Undam. 8
98	Ged.8 Unda.8 Nas	
99	Ged.Unda.Nas.Obo	
100	Pri.	8-4-2 1 1/3
101	Pr.16-8-4 NasTrz	
102	Plenum	1
103	Plenum	2 Oboe 8
104	Pr.	8-4-2 Korn.3
105	Sesquialtera	
106	Sesquia.	Oktav 1
107	Sesquialtera	tr
108	Pr.	16-8-4 Mixt5
109	Prinz.Chor.	8-4-2
110	Zungenchor	
111	Zungenchor	2
112	Zungenchor	2 Mxt
113	S.okt	2 Oktave 1
114	S.okt	2-1 + Terz
115	Prinzipal	16 Hb
116	Subbass	16 Hb
117	Oktavbass	8' Hb
118	Pr.16-8 Sb.Fl.Hb	
119	Pr.16-8Sb.Vio	Hb
120	Kornett	2
121	Korn.	de la comp
122	Korn.	de la c.tr
123	Rohrflöte	2 2/3
124	Flötensatz	2-1
125	Flötens.	2-1 1/3
126	Flötenmixtur	3f.
127	Flötenmixtur	4f.
128	Prinz.mixtur	4f.

tr. = with Tremulant

.			
.			
.			
.			
.			
.			
120 059 !H Flöten 1 Lm Handbass		121 054 !Dir. Flöten Oboe Tremulant	
120 060 !H Flöten 2 Lm Handbass		121 055 !Dir. Prinzipal Basis	
120 061 !H Flöten Trem. Lm Handb.		121 056 !Dir. Prinz. Tromp. Mixtur	
120 062 !H Flöten of. Tr. Handbass		121 057 !Dir. Prinz. 8-4 Flöten	
120 063 !H Prinz. 8-4-2 Fl. Handb.		121 058 !Dir. Prinz. Unda. Ob. Mixt.	
120 064 !H Prinz. 8-4-2 Mix. Handb.		121 059 !Dir. Prinz. Sesq. Mixtur	
		121 060 !Dir. Prinz. Mixt. Oboe	
		121 061 !Dir. Prinz. Tromp.4 Zimbel	
		121 062 !Dir. Prinz. Fl.-Satz Mixt.	
		121 063 !Dir. Prinz. Flöten Mixturen	
		121 064 !Dir. Volles Werk	



Keyswerk Musikelektronik GmbH

Warbersche Str. 32

31675 Bückeburg

Germany

Phone: 05722 905088

Internet <http://www.bohm-orgen.de>

E-Mail info@kboehm-orgeln.de