

**Böhm**  
ORGELN | KEYBOARDS

# SEMPRA 2.0

**Installation and Playing Instructions**

---



[www.boehm-organs.com](http://www.boehm-organs.com)

HIT SESSION 1-4 for SEMPRA 2.0 – Installation and Playing instructions

Version 1.00, 06.02.2022

Art.-Nr. 41281...85AE

The information contained in this documentation may be changed without announcement and are subject to change without notice by Keyswerk Musikelektronik GmbH & Co. KG does not represent an obligation.

The description contains the current state of information at the time of going to press.

Changes of technical details compared to the descriptions, the information and illustrations in this manual are subject to change without notice.

Keyswerk Musikelektronik GmbH assumes no liability for program errors and for incorrect information in the documentation and its consequences.

© Keyswerk 2022

All rights reserved

Responsible for the content of this website

KEYSWERK Music Electronics GmbH

Warbersche Str. 32

31675 Bückeburg

Germany

Phone: 05722 - 905088

Fax: 05722 - 287555

Internet <http://www.keyswerk.de>

E-mail [info@keyswerk.de](mailto:info@keyswerk.de)

## Content

General .....	4
Installation.....	5
Where to find the HIT SESSION data? .....	6
Overview HIT SESSION 1...4.....	8
Styles (Firm-Style-Bank 113: Hit Session & Movie) .....	8
SONGS (Firm-SONG Bank 13: Hit-Session & Movie).....	9

## General

The HIT SESSION style series, created by producer Jens Daniel exclusively for Böhm-Instruments, offers four volumes of 4 title-related styles and matching SONG presets. In the new version for SEMPRA 2.0, the presets and styles have been worked out in even more detail for the respective title. In some cases, there are even more than 6 individual presets available per style. In these cases, the presets are distributed over two SONGs arranged one behind the other, e.g. the SONGs "Million Lights 1-6" and "Million Lights 7-9" from the Hit Session Episode 1.

**A tip:** Simply arrange such SONGs from the HIT SESSION packages that belong together in their own SONG albums. Then you can "step through" all presets for a title/style across SONGs, e.g. with the **preset +/-** buttons between the manuals or the corresponding footswitch functions. For more information on creating albums and assigning footswitches, please refer to the SEMPRA main manual.

In the **HIT SESSION volumes 1 and 2** there are styles/presets that are **worked out for individual tunes**: Here there are suitable global presets for each phase of a title, starting with the intro, the first verse, through the chorus, another verse, a bridge or a solo if necessary, and ending with the finale of a title. These presets are organized in ascending order according to the title progression in one or more SONGs in the SONG list of SEMPRA. The presets are numbered in ascending order within the SONGS.

As a distinctive feature, so-called Special Patterns can be called up for some styles with the style pattern buttons **[Break]** or **[Bridge]**. These contain, for example, completely arranged bridge parts or special drum grooves that correspond to the original title.

**Volumes 3 and 4 of the HIT SESSION** series contain so-called Medley Styles, i.e. each of the Style variations 1...4 contains here the appropriate rhythm for a certain tune of the same artist (exception: "Really Good Feeling" in Hit Session 4: This is again a song-related Style with corresponding presets). So you can play complete hit medleys of the respective artist with only one style and the corresponding SONG presets.

The Fill-Ins provide suitable transitions between the tunes or variations in these styles. For each of these styles you will find a SONG with a preset, usually on the "chorus" position of the SONG presets. Simply switch between the SONGS while playing, the style variation will be switched automatically with the SONG selection. Of course, the style switching must be active in the **preset coupler** (button **[Couple 1 / 2]** left of the display).

## Installation

The installation is done in the same way for all 4 HIT SESSION volumes. We therefore describe the installation here as an example for HIT SESSION episode 1. Simply proceed in the same way for the other episodes and select the respective folder on your USB stick.

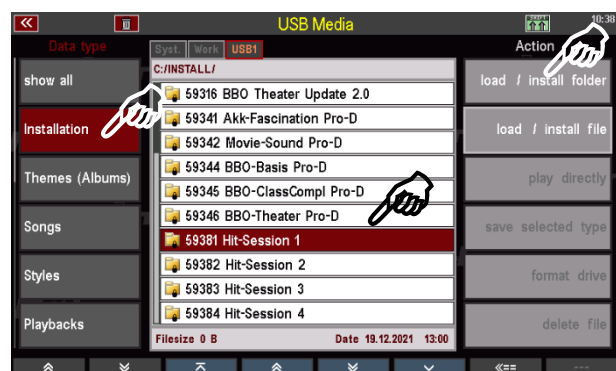
To each HIT SESSION package belongs beside the styles also a SONG file with the suitable SONGs/global presets for the contained styles.

All data of the packages are installed from the USB stick belonging to your SEMPRA 2.0 with the factory data into the instrument.

**Attention:** If you have received the package as an "arc" file (archive file) by email, please first copy this file on the PC into the top directory of your factory data stick (or another USB stick, which must however be formatted on your SEMPRA). When you insert the stick into the SEMPRA, the system recognizes the archive file and asks you whether the archive should be unpacked. Confirm with ENTER. The installation folder for the HIT SESSION package is now created on the stick (we recommend that you delete the arc file from the stick after installation, otherwise you will always be asked whether the file should be unpacked when inserting the stick in the future).

You can now proceed with the actual installation:

- Insert the USB stick with the installation data into a USB socket of your SEMPRA.
- Press the USB button to open the USB menu in the display.
- Tap the **Installation** data type on the left (the field is displayed in red).
- Place the cursor on the folder "59381 Hit-Session 1" using the **data wheel** or the **cursor up/down** buttons (but do not open the folder!).
- Tap the **"Load/Install Folder"** field on the right side.



- The display asks whether you really want to install the data. Confirm with [Enter].
- Now first the styles and then the SONG bank are loaded (see display). After that the installation is finished. The data of the package can now be used.

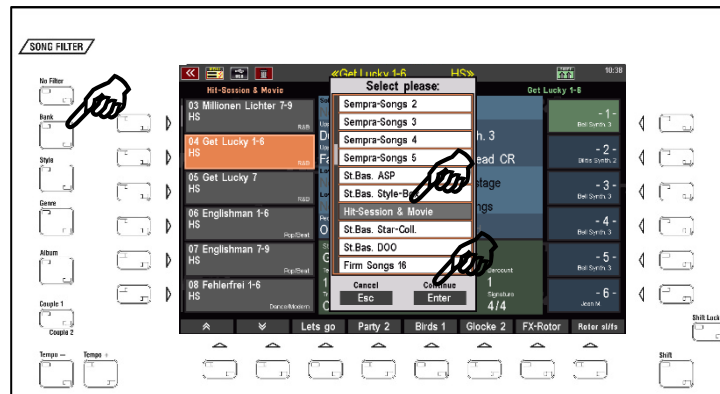


If you have purchased several HIT SESSION volumes, please install the remaining packages in the same way.

**Attention:** Please note that factory data, including the HIT SESSION packages, are always installed on an account-specific basis. If you use additional user accounts on your SEMPRA and the HIT SESSION styles and SONGS are to be used in these accounts as well, you may have to perform the installation again for these additional accounts!

## Where to find the HIT SESSION data?

The HIT SESSION **SONGS** with the global presets can be found in the Firm-SONG-Bank "Hit-Session & Movie" (internal Firm-SONG-Bank No. 13). Call up this bank e.g. via the **SONG filter** button [**Bank**] (press 2x, if not already selected) and then scroll to the corresponding bank position.



Confirm with [**Enter**]. The SONG list on the left of the display now shows the HIT SESSION SONGS.

SONGS of the HIT SESSION packages can be recognized by the abbreviation **HS** in the SONG name.

You can find the HIT SESSION SONGS also with activated genre "Style Basics" and together activated SONG filter buttons [**STYLE**] + [**GENRE**]:

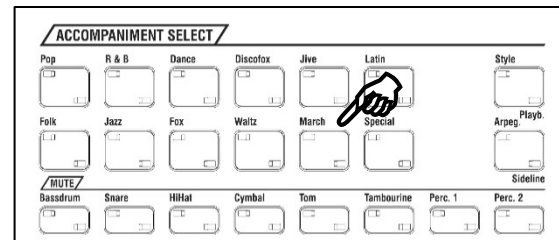
- First tap the SONG filter button [**Genre**] twice. The list for selecting the SONG genres appears in the display.
- Select the Style Basics genre here and confirm with [**Enter**].



- Now switch on the two SONG filter buttons [**Style**] and [**Genre**] in combination (the LEDs in both buttons light up).



The SONGs now appear in the SONG lists of the corresponding accompaniment categories, which you can select via the 12 **category buttons** in the **ACCOMPANIMENT SELECT** group.



The HIT SESSION styles occupy **the firm style bank 13 ("Hit Session & Movie")**. They are assigned to the categories and subgroups corresponding to their character in the style selection. You can recognize HIT SESSION styles in the style selection by the abbreviation **HS** in the style name.



## Overview HIT SESSION 1...4

### Styles (Firm-Style-Bank 113: Hit Session & Movie)

Hit Session No.	Bank	Number	Style
1	113	001	Englishman NY HS
	113	002	Get Lucky HS
	113	003	Million Lichter
	113	004	New-Paul HS
2	113	005	Bonfire Heart HS
	113	006	Fehlerfrei HS
	113	007	Last Christmas HS
	113	008	Shine My Shoes HS
3	113	009	Helene Ever HS
	113	010	Hit Kaiser HS
	113	011	Js Abba Mix HS
	113	012	Udos Sahne Mix HS
4	113	013	Herbert Mix HS
	113	014	Marianne Mix HS
	113	015	Nena Mix HS
	113	016	Real Good Feelin HS



## SONGS (Firm-SONG Bank 13: Hit-Session & Movie)

Hit Session No.	Bank	Number	SONG	
1	113	001	New Penny Lane HS	Paul McCartney
	113	002	Millionen Lichter 1-6 HS	
	113	003	Millionen Lichter 7-9 HS	Christina Stürmer
	113	004	Get Lucky 1-6 HS	
	113	005	Get Lucky 7 HS	Daft Punk
	113	006	Englishman 1-6 HS	
	113	007	Englishman 7-9 HS	Sting
2	113	008	Fehlerfrei 1-6 HS	
	113	009	Fehlerfrei 7-9 HS	Helene Fischer
	113	010	Bonfire Heart 1-6 HS	
	113	011	Bonfire Heart 7-9 HS	James Blunt
	113	012	Last Christmas 1-6 HS	
	113	013	Last Christmas 7 HS	Wham
	113	014	Shine My Shoes 1-6 HS	
	113	015	Shine My Shoes 7 HS	Robby Williams
3	113	016	H Für Einen Tag HS	
	113	017	H So kann das HS	Helene Fischer
	113	018	RK Joana HS	
	113	019	RK Hier fing alles an HS	
	113	020	RK Alles was du HS	Roland Kaiser
	113	021	AB_Dancing Queen HS	
	113	022	AB_Gimme Gimme HS	
	113	023	AB_Mama Mia HS	
	113	024	AB_The Winner Takes HS	Abba
	113	025	UJ_Ich weiss was HS	
	113	026	UJ_Niemals in NY HS	
	113	027	UJ_17 Jahr HS	
113	028	UJ_Mit Sahne HS	Udo Jürgens	
4	113	029	Nena_Irgendwie HS	
	113	030	Nena_99 Luftballons HS	
	113	031	Nena_Nur geträumt HS	
	113	032	Nena_Leuchtturm HS	Nena
	113	033	M.Rosb_Lieder der N. HS	
	113	034	M.Rosb_Ich bin wie du HS	
	113	035	M.Rosb_Marlene HS	
	113	036	M.Rosb_Er gehört zu HS	Marianne Rosenberg
	113	037	Its a really 1_6 HS	
	113	038	Its a really 7-8 HS	Peter Kent
	113	039	Grönem_Musik nur HS	
	113	040	Grönem_Männer HS	
	113	041	Grönem_Morgen HS	
	113	042	Grönem_Mensch HS	Herbert Grönemeyer



**BÖHM Orgeln**

KEYSWERK Musikelektronik GmbH

Warbersche Str. 32

31675 Bückeburg

Tel.: 05722 905088

**Internet** [www.boehm-orgeln.de](http://www.boehm-orgeln.de)

**E-Mail** [info@boehm-orgeln.de](mailto:info@boehm-orgeln.de)