

**Böhm**  
ORGELN | KEYBOARDS

# SEMPRA 2.0

**Installation and Playing instructions**

---

# Style Box

# 2

[www.boehm-organs.com](http://www.boehm-organs.com)

## Style Box 2 for SEMPRA 2.0 – installation and playing instructions

Version 1.00, 09.12.2021

Art.-Nr. 42396AE

The information contained in this documentation may be changed without announcement and are subject to change without notice by Keyswerk Musikelektronik GmbH & Co. KG does not represent an obligation.

The description contains the current state of information at the time of going to press.

Changes of technical details compared to the descriptions, the information and illustrations in this manual are subject to change without notice.

Keyswerk Musikelektronik GmbH assumes no liability for program errors and for incorrect information in the documentation and its consequences.

© Keyswerk 2021

All rights reserved

Responsible for the content of this website

KEYSWERK Music Electronics GmbH

Warbersche Str. 32

31675 Bückeburg

Germany

Phone: 05722 - 905088

Fax: 05722 - 287555

Internet <http://www.keyswerk.de>

E-mail [info@keyswerk.de](mailto:info@keyswerk.de)

## Content

General .....	4
Installation.....	4
How to find the Style Box data? .....	5
Overview STYLE BOX 2.....	6
Styles .....	6
SONGS .....	7

## General

**STYLE BOX** is the new style series for all Böhm-SEMPRA 2.0 organs and keyboards.

Each set of this series contains at least 15 styles, each with a specially arranged example SONG, each containing four "one-touch" presets, adapted to the four style variations. Whether traditional swing and fox rhythms, country and Latin styles, soulful ballads or groovy dancefloor beats - the AMADEUS STYLE BOX contains it all.

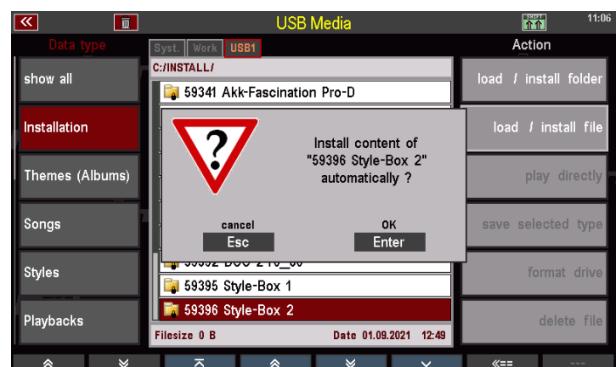
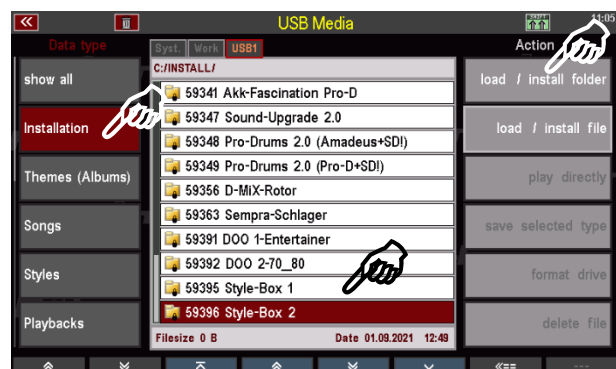
All rhythms are well-balanced, sound round and powerful and are arranged in a musically sensible and flexible way. It's fun to start playing right away!

A detailed list of the included styles, presets and sounds can be found in the appendix to these installation and playing instructions.

## Installation

The data of the Style Box 2 is supplied on the USB stick belonging to your SEMPRA and is installed in the instrument from there:

- Insert the USB stick into one of the USB sockets of your SEMPRA.
- Press the USB button to open the USB menu in the display.
- Tap the **Installation** data type on the left (the field is displayed in red).
- Place the cursor on the folder "59396 Style Box 2" using the **data wheel** or the **up/down cursor buttons** (do not open the folder!).
- Tap the "Load/Install folder" field on the right.
- The display asks whether you really want to install the data. Confirm with **[Enter]**.
- The data will now be loaded. You can then exit the USB menu (press the **[ESC]** key or the **[USB]** button again).



The STYLE BOX 2 data is now loaded and ready to use.

**Caution:** Please note that factory data, including the Style Box, is always installed on an account-specific basis. If you use additional user accounts on your SEMBRA and the Style Box data is also to be used in these accounts, you may have to perform the installation again for these additional accounts!

## How to find the Style Box data?

The **Style Box SONGS** with the one touch presets can be found in the Firm **SONGS** bank 12 "St.Bas. Style Box". Call up this bank e.g. via the SONG filter button [**Bank**] (press 2x, if not already selected) and then scroll to the corresponding bank position.

Confirm with [**Enter**]. The SONG list on the left side of the display now shows the SONGs of the firm bank 12 (Style Box).

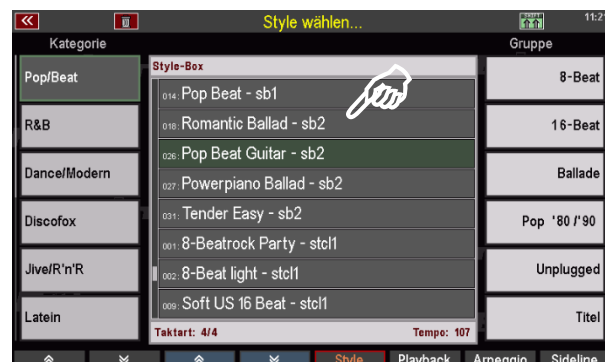
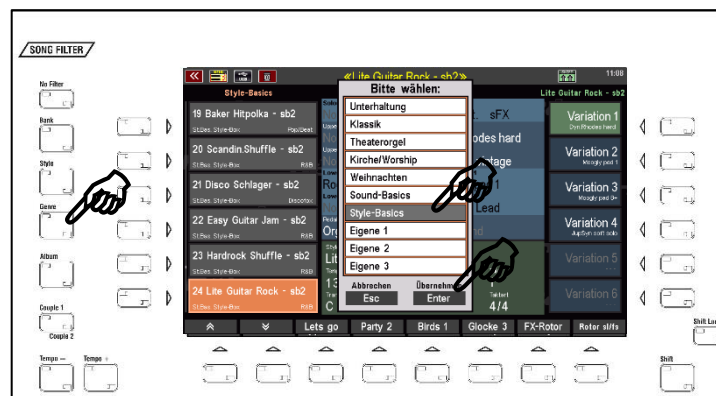
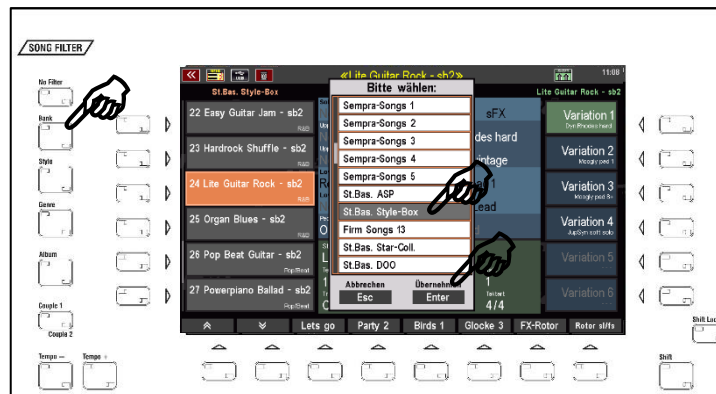
Alternatively, you can call up the **STYLE BASICS** genre for the SONG list. All Style Box SONGs are assigned to this genre.

To do this, press the SONG filter button [**Genre**] (press 2x if necessary, if not already selected) and select the genre "Style Basics" from the list.

Confirm with [**Enter**]. The SONG list on the left now shows the SONGs of the genre "Style Basics", here among others the Style Box SONGs.

SONGS of the Style Box Packages can be recognized by the abbreviation sb1, sb2... in the SONG name.

The **Style Box STYLES** occupy the Firm Style Bank 12. They are assigned to the corresponding categories and subgroups in the Style selection. Style Box Styles can be recognized in the Style selection by the abbreviation **sb1, sb2...** in the style name.



## Overview STYLE BOX 2

### Styles

Bank	Number	Name
112	017	Adys Alpenbeat - sb2
112	018	Romantic Ballad - sb2
112	019	Baker Hitpolka - sb2
112	020	Scandin. Shuffle - sb2
112	021	Disco Schlager - sb2
112	022	Easy Guitar Jam - sb2
112	023	Hardrock Shuffle - sb2
112	024	Lite Guitar Rock - sb2
112	025	Organ Blues - sb2
112	026	Pop Beat Guitar - sb2
112	027	Powerpiano Ballad - sb2
112	028	Schlager Beat - sb2
112	029	Slow Rock - sb2
112	030	Schlager Mix - sb2
112	031	Tender Easy - sb2

## SONGS

Bank	Number	Name
112	017	Adys Alpenbeat - sb2
112	018	Romantic Ballad - sb2
112	019	Baker Hitpolka - sb2
112	020	Scandin.Shuffle - sb2
112	021	Disco Schlager - sb2
112	022	Easy Guitar Jam - sb2
112	023	Hardrock Shuffle - sb2
112	024	Lite Guitar Rock - sb2
112	025	Organ Blues - sb2
112	026	Pop Beat Guitar - sb2
112	027	Powerpiano Ballad - sb2
112	028	Schlager Beat - sb2
112	029	Tender Easy - sb2
112	030	Schlager Mix - sb2
112	031	Slow Rock 2 - sb2



Keyswerk Musikelektronik GmbH  
32 Warbersche Strasse  
31675 Bückeburg  
Germany

Phone: +49 5722 905088

**Internet** [www.bohm-organs.com](http://www.bohm-organs.com)

**E-mail** [info@boehm-organs.com](mailto:info@boehm-organs.com)