



Installation and playing instructions

SEMPRA 2.0



www.boehm-organs.com

Upgrade SEMPRA 2.0 – Installation and playing instructions

Version 1.02

Art.-Nr. 62620E

version: 17.09.2021

The information contained in this documentation is subject to change without without prior notice and does not represent any obligation on the part of Keyswerk Musikelektronik GmbH.

The description is based on the information available at the time of printing.
at the time of printing.

Changes of technical details compared to the descriptions and illustrations in this manual are reserved.

Keyswerk Musikelektronik GmbH cannot be held responsible for program errors and for incorrect information in the documentation and its consequences.
and their consequences.

© Keyswerk 2021

All rights reserved

Responsible for the content
KEYSWERK Musikelektronik GmbH
Warbersche Str. 32
31675 Bückeburg
Germany
Tel.: 05722 - 905088
Web: www.boehm-orgeln.de
E-Mail info@boehm-orgeln.de

Content

SEMPRA 2.0 - The comprehensive operating system and firmware upgrade for all SEMPRA models...	4
Content of the upgrade.....	5
Installation of SEMPRA 2.0.....	6
Which hardware has my SEMPRA?	6
Checking and, if necessary, updating the AMADEUS firmware	7
1. Firmware Update.....	9
2. Creating a new user account for SEMPRA 2.0.....	9
3. Installation of the drum upgrades from microSD Card	10
4. Installation of the AMADEUS sound update	15
5. Installation of the firm data and activation SEMPRA 2.0 via app code.....	16
6. Loading sound presets into previous user accounts	18
The new functions in SEMPRA 2.0.....	19
Data overview.....	19
SONG categories and their selection.....	19
Sound Basics	20
Info text and song lyrics in Sound Basics.....	20
Style-Basics – the SEMPRA One-Touch presets.....	22
New filter functions for the SONG list.....	23
SEMPRA SONGs	24
General information about the SEMPRA 2.0 registrations	25
SempraChord – Ensemble play with only one finger	26
New styles and style functions in SEMPRA 2.0	28
Features of the new SEMPRA 2.0 Styles.....	28
Advanced chord control	29
Flexible bass control for slash chords.....	29
Extended one finger chord "pad"	30
Appendix 1: SEMPRA 2.0 SONG banks	31
Appendix 2: SEMPRA 2.0 styles.....	36
Appendix 3: AMADEUS sounds and drumkits in SEMPRA 2.0.....	38

SEMPRA 2.0 - The comprehensive operating system and firmware upgrade for all SEMPRA models

With the new firmware version 2.0 and the corresponding extensive software package we raise the musicality of your SEMPRA to a new level! **SEMPRA 2.0** contains among others.:

- **256 new styles with 4 sample registrations each (One Touch)** – all with 4 full variations including 4 intros, endings, breaks, bridges, fills etc. and separate minor tracks.
- **More than 80 new and about 200 optimized Amadeus sounds**
- **6 new pro drum kits with new drum samples**
- **162 new Sound-BASIC registrations**, also as a basis for your own creations. If the **Karaoke/Text Display app (art. no. 41159)** is present, explanations are also available as texts for the individual Sound BASIC registrations in the display.
- **256 new song-related SONGs**, all with 6 SONG presets each. Play many well-known pieces of music with 6 perfectly arranged registrations - from intro to ending a musical treat!
- **A total of over 2,700 registrations already in the basic instrument.**
- All new styles and SONG presets naturally use the new features of version 2.0 as well as the new Amadeus Pro sounds and drum sets.
- **Extended SoloChord and new SempraChord:** If several solo chord parts with the same solo chord type are used, the individual notes of the solo chord harmony are divided among these parts. This creates striking ensemble effects when playing melodies with only one finger!
- **Extended One-Finger Chord background layer:** Up to 3 lower parts on the chord manual each play one note of the selected 1-finger chord. This makes your accompaniment even fuller and more versatile even with one-finger chord control.
- **Advanced chord detection** with flexible bass control directly while playing
- The search functions for registrations and styles have been usefully extended.
- **or most SONG and Style packages, 2.0 updates are already available**, which raise the included data to the new level of SEMPRA 2.0 and significantly extend the scope of the individual packages. See price list for details.

You will receive the SEMPRA 2.0 Upgrade - a comprehensive software package - on USB stick and a micro-SD Card containing the sample update for the new AMADEUS Pro drumkits.

The SEMPRA 2.0 upgrade can also already be used with the previous SEMPRA hardware, consisting of Amadeus2 sound generation and the Crystal Mixer preamp. An optimal result is achieved with the current SEMPRA tone generation AMADEUS Pro-D and the new D-MiX preamplifier.

The installation for both hardware variants hardly differs, only partly different folders for the necessary AMADEUS sound and sample updates have to be used during the installation.

The installation of the upgrade is described in the following chapter. In further chapters you will find hints for playing with the new functions and in the appendix an overview of the sounds, registrations and styles included in SEMPRA 2.0.

We now wish you success with the installation and above all a lot of fun with the outstanding musicality of SEMPRA 2.0!

Content of the upgrade

The software package for the SEMPRA 2.0 upgrade contains:

- the new operating software (BOS) vers. 2.0 (or newer).
- the drum sample upgrade for Amadeus (1st generation) and Amadeus Pro-D incl. SD-Card.
- the other data for the SEMPRA 2.0 basic upgrade:
 - the Amadeus sound update with over 80 new Amadeus sounds...
 - ... incl. sound presets and sound basics (songs)
 - 256 new styles incl. style basics (songs) for each style!
 - 256 new song-related SONGs with 6 presets each
 - demo SONG albums with playbacks and lyrics
- adapted sound presets for existing user accounts
- the app code to unlock version 2.0 on your SEMPRA.

If you ordered the upgrade together with further updates for existing software packages, the corresponding new versions of these packages are also on the delivered USB stick.

Currently available are the following 2.0 extensions:

- **SONG list „German Schlager“** including 64 SONGs.
- **D-MiX-Rotary** app incl. new organ sounds.
- Sound-Basics (SONGS with registrations) for
 - **Akkordeon-Fascination**
 - **D-MiX-Rotor-Orgeln**
- App codes for
 - **Karaoke /Text display**
 - **EasyEditor Styles**
- New 2.0 versions of the following style packages (incl. style basic songs):
 - **ASP 1 and 2**
 - **Style-Box 1 and 2**
 - **Star-Collection 1 and 2**
 - **DOO Entertainer and 70/80**
- 2.0 Update for the church organ sound package **Classic Complete** with now 642 registrations and integration of the Distance function from the app Soundcontroller (Art.-No. 41153)

Attention: It is absolutely necessary to create a new user account on SEMPRA for version 2.0, because all factory data are new and must NOT be combined with old factory data.

Of course you can use your own user data again. In some cases, the octave position of individual sounds may need to be adjusted. But since all factory styles have been newly created, you will have to assign new styles to your old SONG presets, if they used factory styles.

We therefore strongly recommend that you only use your previous data in your previous accounts! These remain unaffected by the 2.0 upgrade!

Installation of SEMPRA 2.0

The installation of the complete SEMPRA 2.0 package is divided into the following steps:

1. firmware update: loading the new operating software (BOS)
2. creation of a new user account for SEMPRA 2.0
3. installation of the new drum samples into the existing AMADEUS sound systems (for this, the supplied microSD Card is required)
4. installation of the AMADEUS sound upgrade including sound presets, new button macros and the new 2.0 boot screen
5. installation of company data and activation SEMPRA 2.0 via app code
6. loading soundpresets into the old user accounts for compatibility

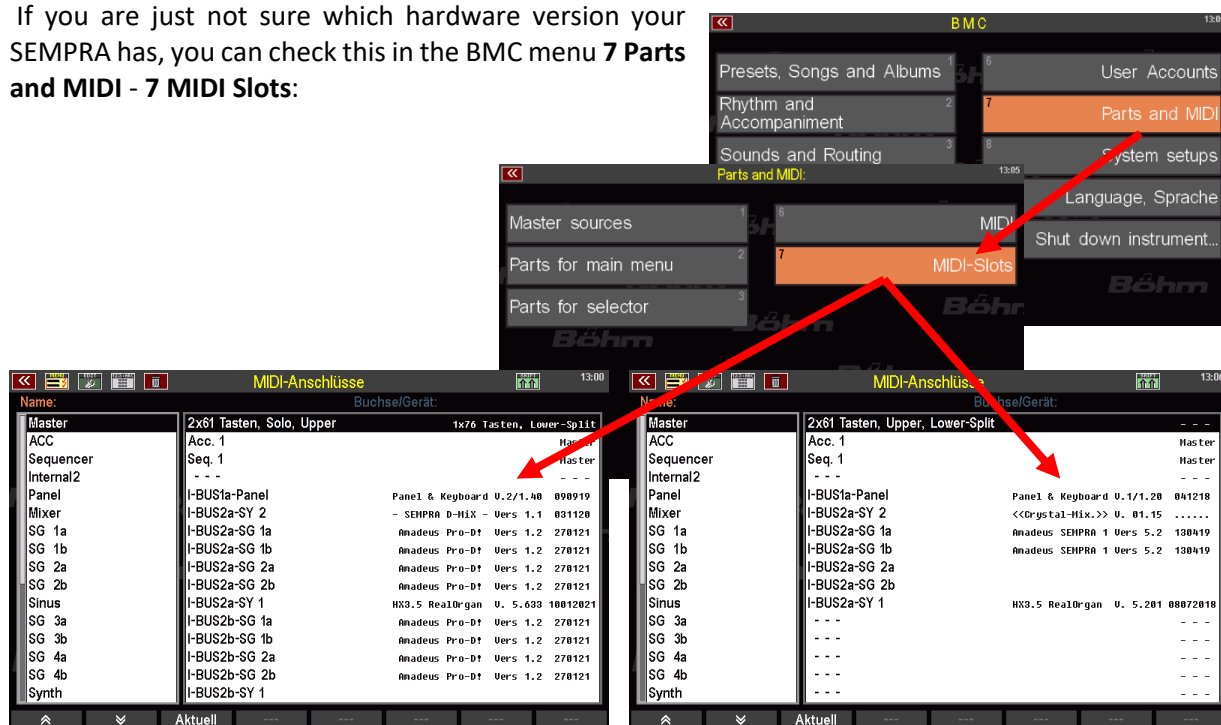
These steps are explained in detail below.

Which hardware has my SEMPRA?

As already mentioned, the SEMPRA 2.0 upgrade can be used on instruments with the former Amadeus / Crystal Mixer hardware as well as on the current hardware platform consisting of Amadeus Pro and the D-MiX preamp, of course.

The installation steps for both hardware versions are also identical, it is only necessary to access different installation folders on the USB stick for the sample and sound upgrades (don't worry: a wrong installation is not possible, the system will recognize it if you try to install the data that does not match your hardware).

If you are just not sure which hardware version your SEMPRA has, you can check this in the BMC menu **7 Parts and MIDI - 7 MIDI Slots:**



Display example for (multiple) AMADEUS Pro-D / D-MiX

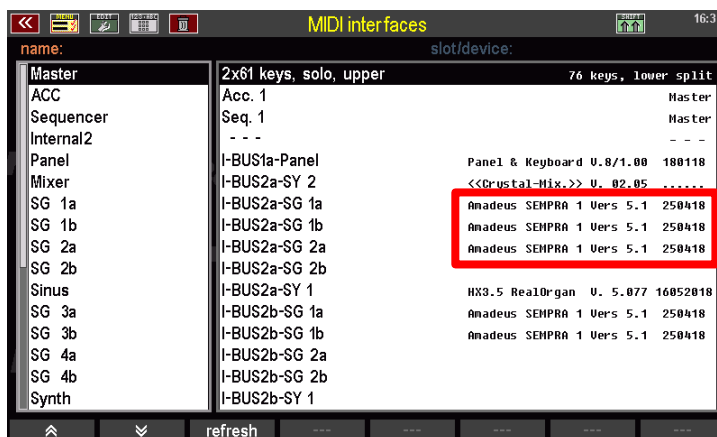
Display example for 1x AMADEUS Sempra /Crystal Mixer

Checking and, if necessary, updating the AMADEUS firmware

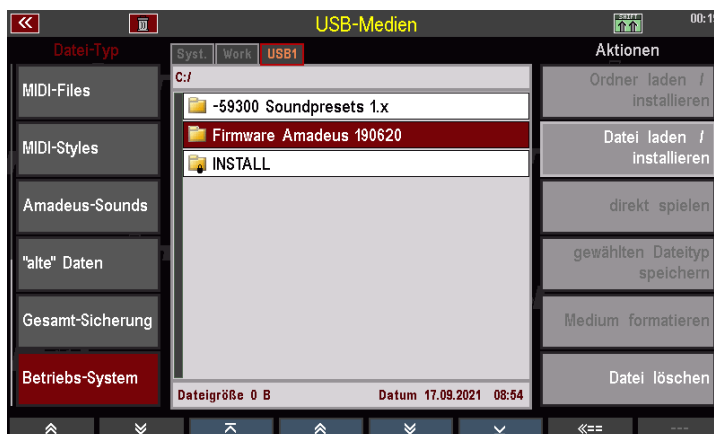
Attention: In order to load the drum sample update from the microSD card into the AMADEUS sound module(s) of your SEMPRA, these must have at least firmware version **1.1 from 19.06.2020** (AMADEUS Pro D) or **5.3 from 19.06.2020** (AMADEUS first generation)!

The current software versions of the installed AMADEUS modules are also displayed in the "MIDI interfaces" menu:

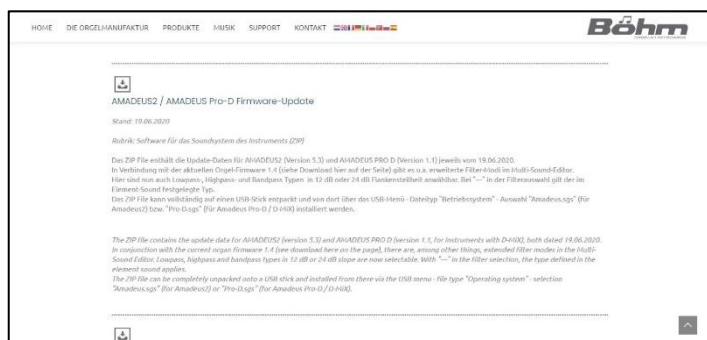
In our picture we see a current software status of 25.04.2018. The sound modules would therefore have to be updated first in this case.



You will find the necessary software update for AMADEUS/Pro-D in the folder Firmware Amadeus 190620 on the installation USB stick for update 2.0 (from delivery date 17.09.2021)...



...or also in the download area of the Böhm website (www.boehm-organs.com). If you download the file here, unpack the ZIP file to a USB stick. The file contains the update files for both AMADEUS versions (AMADEUS 1st generation and AMADEUS Pro-D).



If your sound system(s) currently have an older software version, first install the firmware update as follows:

- Insert the installation USB stick or the stick with the update data into the SEMPRA and open the USB menu via the **[USB]** button.
- On the left side of the display, select the data type **Operating system**.

- If you are using the installation stick 2.0, tap on the folder **Firmware Amadeus 190620** to open this folder.

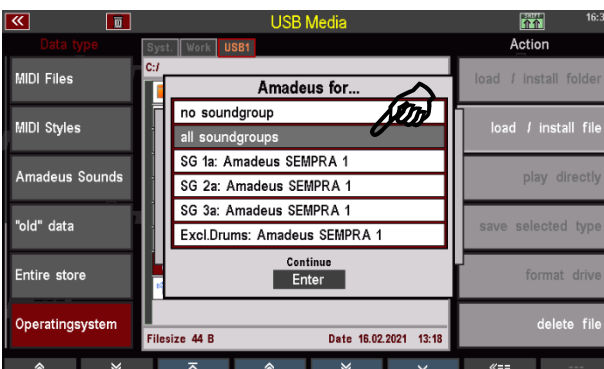


- In the file list in the middle you will now see the two .sgs files, for AMADEUS (first generation sound systems) and for AMADEUS Pro-D.



- Mark the file that applies to your SEMPra with the cursor and tap on **Load/Install file** on the right side.

- The display asks whether the file should actually be loaded. Confirm with **[Enter]**.

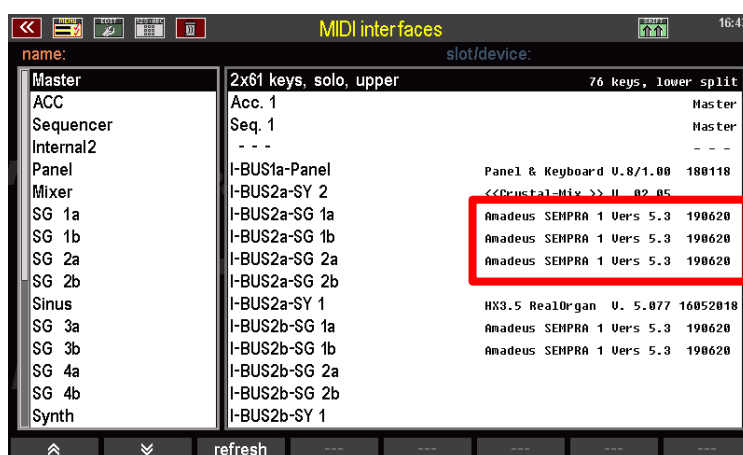


- If there are several AMADEUS modules in the SEMPra, you will now be asked for which module you want to perform the update. Select here "all sound modules" and confirm again with **[Enter]**.

- The firmware update is now loaded.

- Then restart the SEMPra.

- In the **MIDI - MIDI interfaces** menu you can now see the updated software status:



Now the AMADEUS sound modules are ready for the installation of the drum sample update from the 2.0 upgrade.

So now let's start with the actual installation of the SEMPra 2.0 upgrade:

1. Firmware Update

The supplied USB stick contains a new version of the SEMPRA firmware (BOS file).

This must first be installed:

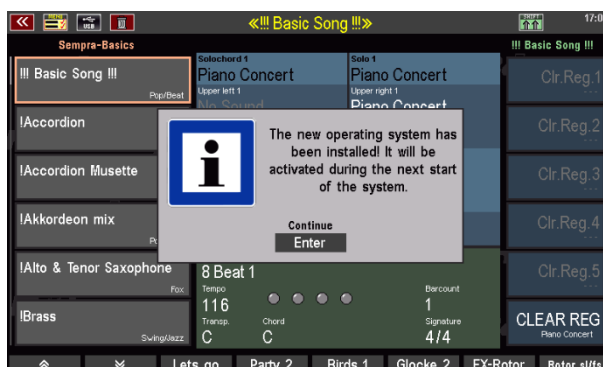
- Switch on the SEMPRA.
- Insert the USB stick that you received with the 2.0 upgrade into the SEMPRA.

- The new firmware version is detected and the display asks whether it should be installed.



- Confirm with **[Enter]**.

- The new firmware is loaded. The display then shows the message:

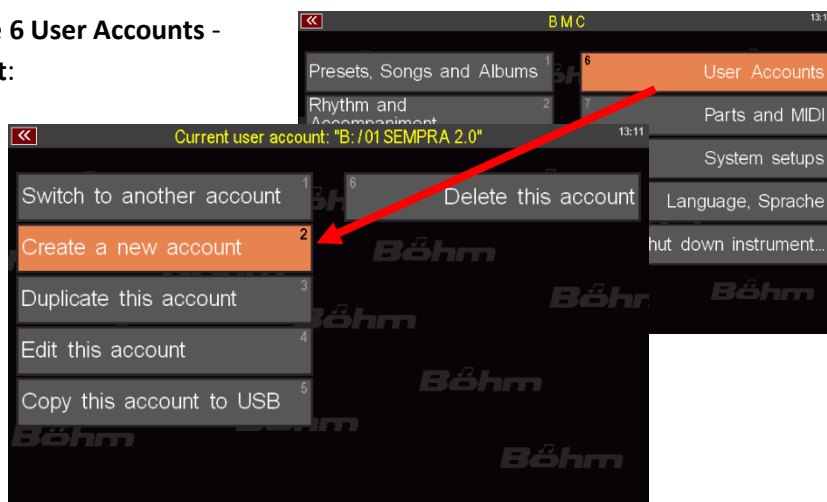


- Confirm with **[Enter]**. A restart is not necessary at this point.

2. Creating a new user account for SEMPRA 2.0

Now we will create a new, empty user account into which we will install the SEMPRA 2.0 data. This ensures that your previous data in the already existing accounts can continue to be used regardless of the 2.0 upgrade.

- Call up the BMC menu **6 User Accounts - 2 Create a new account:**

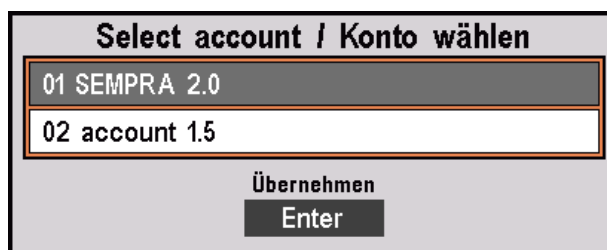


- The input field **Create a new user account** appears in the display.
- Enter a meaningful user name for the account, e.g. 'SEMPRA 2.0'.

A tip: By prefixing numbers, you can easily determine the order in which the accounts will later be displayed in the selection screen when SEMPRA is switched on.



- Confirm the entry with **[Enter]**. The new account is now created and the display changes to the account selection screen.
- Select the new (still empty) account and confirm with **[Enter]**. The account is started.



- Now switch off the SEMPRA for the next step - the installation of the new drum samples from the microSD card.

3. Installation of the drum upgrades from microSD Card

Now we install the drum samples for the new Pro drum kits included in version 2.0. The included SD card contains the new drum samples for both Amadeus types ("Amadeus 1st gen." and "Amadeus Pro-D"). This upgrade must be done separately for each built-in Amadeus sound module:

- Open the console of your SEMPRA to access the built-in AMADEUS sound module:

SE10...SE60: Lösen Sie die Schrauben am oberen Bedienfeld und klappen Sie das Bedienfeld vorsichtig so weit auf, bis es durch das angebrachte Zugband arretiert wird.

SE70...SE100: From below, loosen the large screws in the front of the wooden side panels on both sides, with which the console lid is screwed to the base. Then carefully open the console by pulling the lid with the control panels evenly upwards on both wooden side panels. Open the lid until it is locked in place by the attached lid holder.

Behind the keyboards you can see one (SE10...SE60) or two (SE70-SE100) large circuit boards on the top panel, depending on the model, on which the AMADEUS sound modules are located. Depending on the model or equipment, 1 - 5 AMADEUS modules can be installed:

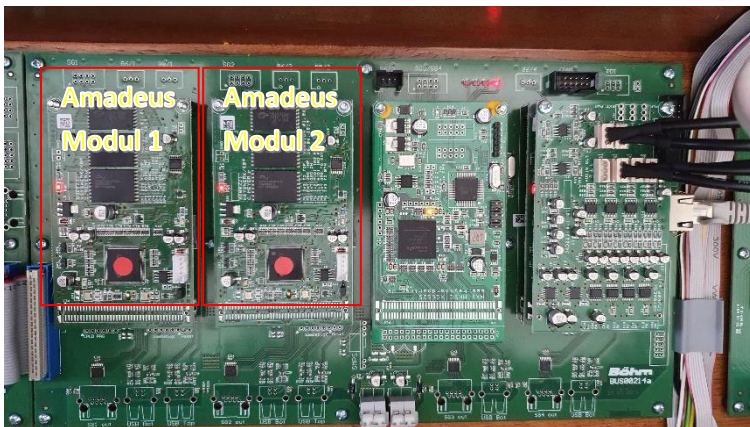


Amadeus module 1st generation

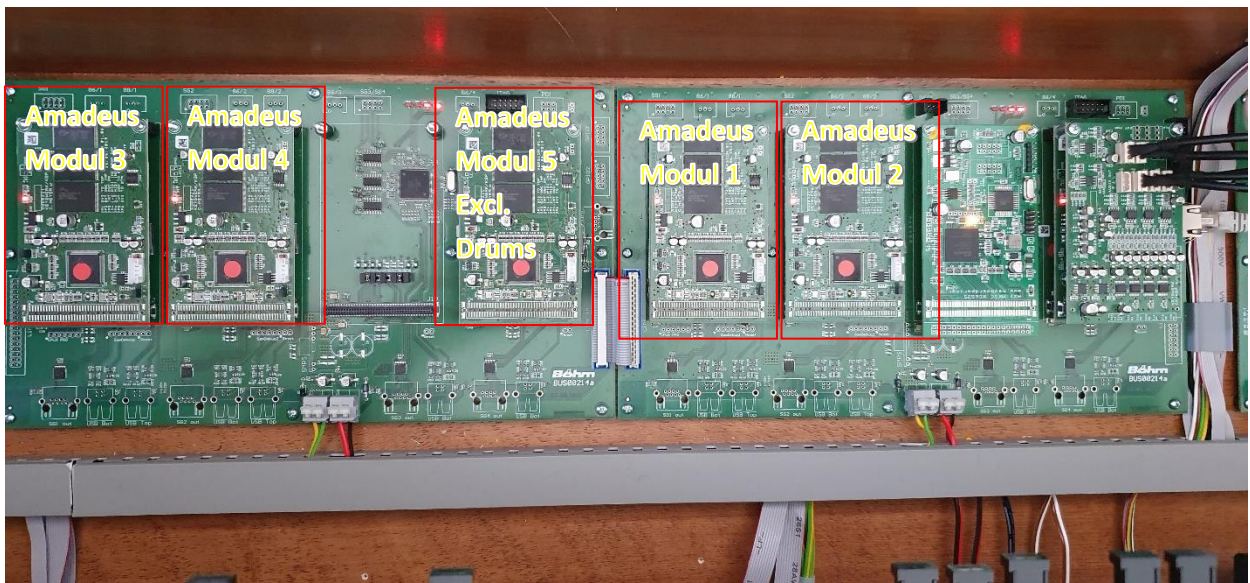


Amadeus Pro-D module

SE10...60 with 1 or 2 AMADEUS modules:

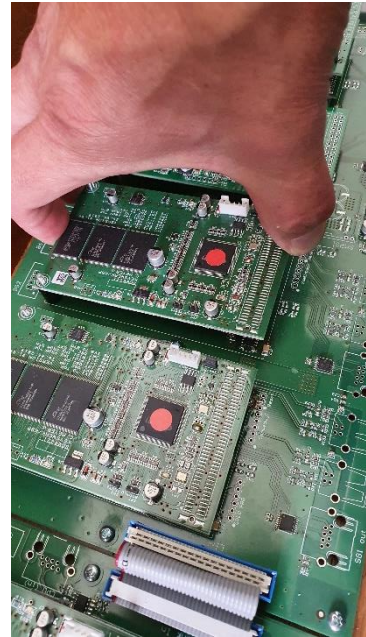


SE70...100 / 480SE...600SE with 3 – 5 AMADEUS modules:



The AMADEUS sound modules have a microSD card slot on their bottom side (AMADEUS Pro-D) or top side (AMADEUS 1st generation). Insert the card with the sample upgrade into this slot and then start the installation from the USB program.

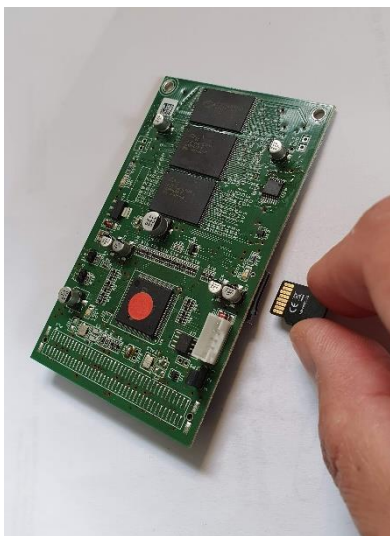
With AMADEUS modules sitting directly next to each other on the base board, it is necessary to remove them to insert and eject the microSD card.



- The modules are fixed at the back with 2 nuts each, at the front they are connected to the base board via a plug-in strip.
- To remove a module, carefully remove the two small nuts at the rear of the module and then carefully pull the module upwards so that it is pulled out of the plug-in strip at the front (see picture on the right).
- To reinsert a module, guide it over the two small screws at the back and snap it into the connector strip on the base board at the front. Then reattach the two small nuts and tighten them. Make absolutely sure that no loose nuts remain in the organ.

The microSD card can be easily snapped into the card slot with the module removed:

- Insert the card into the card slot in the correct orientation and press on the edge of the card until it clicks into place.
- After upgrading the module, press the edge of the card again to remove it from the card slot and insert it into the next module.



card slot on AMADEUS Pro-D

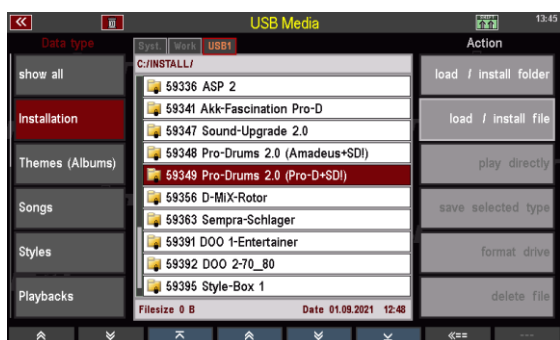


card slot on AMADEUS 1st generation

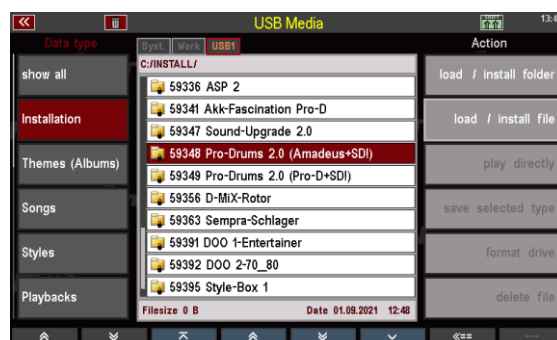
You now know how to recognize the AMADEUS sound system(s) and how to insert or remove the microSD card from the AMADEUS modules. So now let's start with the actual upgrade for the first sound module:

- Insert the microSD card into AMADEUS sound module 1 and plug the module back into its slot correctly.
- Switch on the SEMPRA and start the SEMPRA 2.0 user account.
- Call up the USB menu (the upgrade stick must be plugged in).
- Tap the Installation field on the left and use the data wheel to place the cursor on the installation folder for the drum upgrade that corresponds to the type of AMADEUS module. Attention: Do not open the folder!

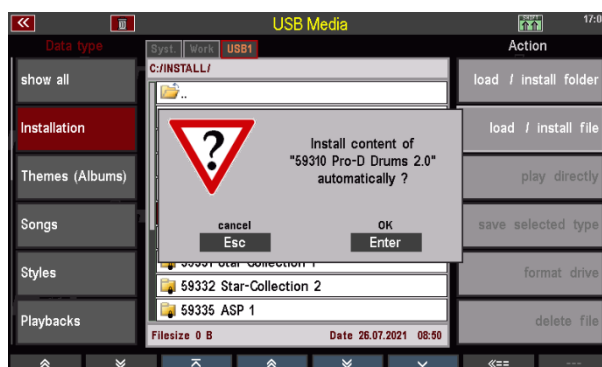
Installation folder for AMADEUS Pro-D



Installation folder for AMADEUS 1st generation

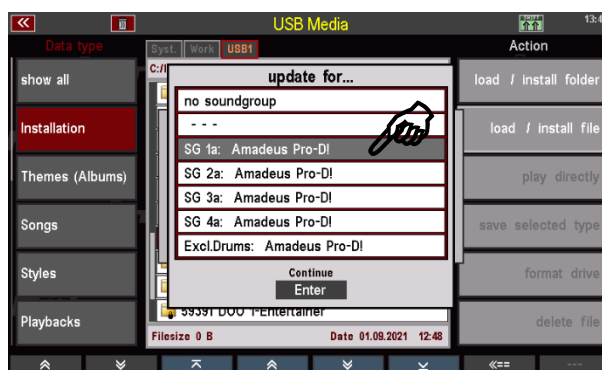


- Tap on **Load/Install Folder** on the right and confirm the prompt with **[Enter]**.



- If the SEMPRA is equipped with only one AMADEUS module, the upgrade starts immediately.

- If several modules are installed, you will first be asked for which module you want to perform the upgrade. Select the module that currently contains the microSD card and confirm with **[Enter]**.



- The upgrade will now start and run. This may take a few minutes.



- When the upgrade is complete, turn the SEMPRA off again and remove the just-updated module to remove the microSD card from it.
- After removing the microSD card, insert the AMADEUS module back into its slot.
- If your SEMPRA has several AMADEUS modules, repeat the above steps for all existing modules in turn.
- When the last module has been updated, remove the microSD card and store it away.
- Make sure that all AMADEUS modules are correctly inserted again and screw them in place with the small nuts.
- Close the control panel or the top cover completely and replace the screws.

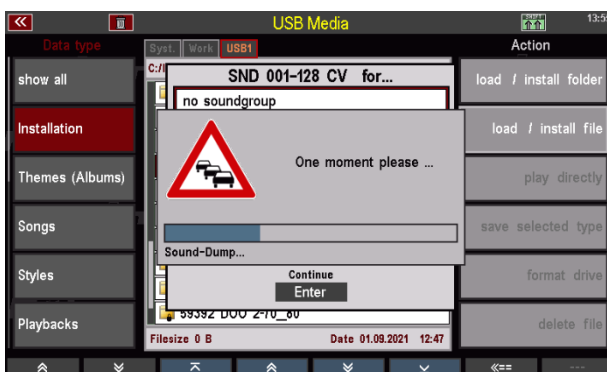
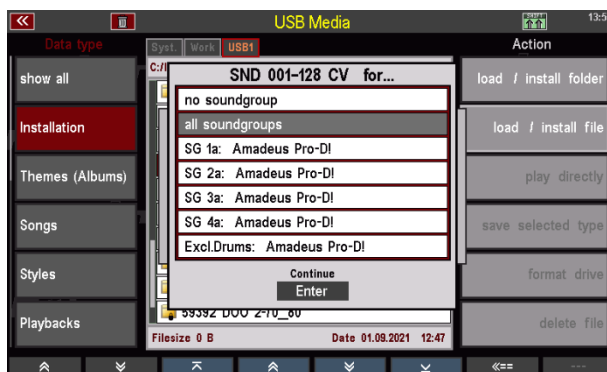
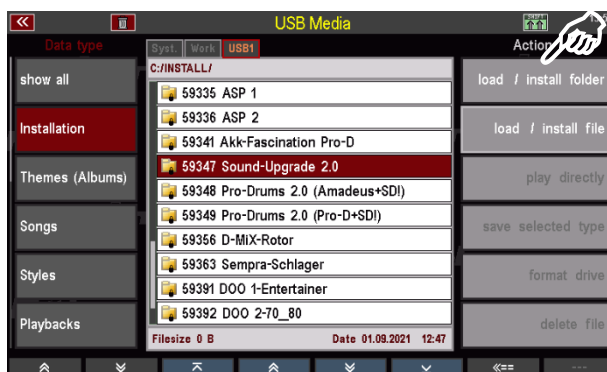
When all existing AMADEUS sound modules have been provided with the drum upgrade, this installation step is completed.

4. Installation of the AMADEUS sound update

Next, we install the AMADEUS sound update, which adds the 80 new sounds in SEMPRA 2.0 and optimizations for more than 200 existing sounds to the sound modules. At the same time, this step installs the sound presets, some new button macros and the new SEMPRA 2.0 boot screen.

The data installed in this step will be directly available in every new account you create on SEMPRA. They do not need to be reinstalled each time.

- Place the cursor on the Sound Upgrade 2.0 folder in the USB menu (do not open folder!).
- Tap **Load/Install folder** on the right and confirm the security prompt with **[Enter]**.
- If only one AMADEUS sound module is present, the installation starts directly.
- If several AMADEUS modules are present, the display first asks for which module you want to install the sound update. Select the All sound modules item here to install the update in one step for all existing modules at the same time. Confirm with **[Enter]**.
- The sound update and the remaining files are now installed.



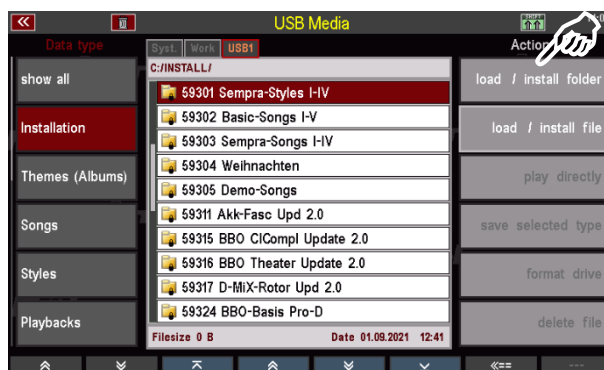
This concludes this installation step. In this step, a new startup image was also installed, with which SEMPRA will greet you in the future when you switch it on:



5. Installation of the firm data and activation SEMPRA 2.0 via app code

In the next step we install the new 2.0 factory data, i.e. the SONGs with the presets and the new styles. As in the previous version, this data must be reinstalled in each new user account to be created, if it is desired there.

- We start with the styles: In the USB menu again select **Installation** on the left and with the cursor in the list the folder **59301 Sempra Styles I-IV** (do not open folder!)
- Tap on **Load/Install folder** on the right and confirm the following security prompt with **[Enter]**. The styles are now installed.



- Now install the three other folders of the upgrade in a similar way:

59302 Basic-Songs I-V: Contains the SONGs with the Sound-Basic and and Style-Basic (one-touch settings!) registration.

59303 Sempra-Songs I-IV: Contains the title-related SONGs of the new song list 2.0.

59305 Demo-Songs: Contains a selection of SONGs, partly with playback (midifile) accompaniment and karaoke or song lyrics (lyrics only visible with installed app Karaoke/Text Display, Art.-No. 41159).

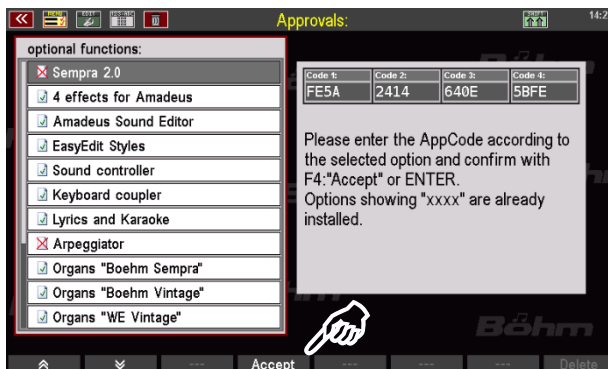
- If existing, install additional software (2.0 updates for SONG and Style packages) in the usual way.

Now all the SEMPRA 2.0 upgrade data has been installed into the new user account.

Finally, all you need to do now is install the app code(s) for version 2.0 and any other apps you have obtained so that the new functions are available:

- Call the BMC menu 8 System Settings - 4 Approvals.

- If the app codes are already on the USB stick in the "App codes" folder, the new codes are already entered in the corresponding fields.



- Press the **[F4] Accept** button below the display to accept the displayed code. Proceed in the same way for other codes that may need to be installed (e.g. for the new apps **Easy Edit Styles**, **Karaoke/Text Display** or **D-MiX Rotor**).

- Then shut down and restart the instrument.



The SEMPRA 2.0 upgrade is now fully installed on your SEMPRA and the new data can be used.

6. Loading sound presets into previous user accounts

For the correct operation of your "old" accounts with the data of the previous version, call these accounts respectively and load the new sound presets there. These are loaded as user data and therefore not via the data type **Installation**.

- Now close the new SEMPRA 2.0 user account and start the first of your previous accounts into which the new sound presets are to be loaded

- Select the file type **Soundpresets** in the USB menu on the left.

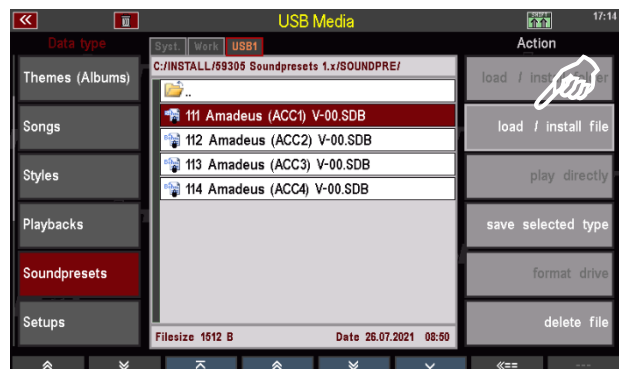
- Place the cursor on the folder **Soundpresets 1.x** and open the folder with **[Enter]**, or by tapping on the folder.



- Now open the contained subfolder **SOUNDPRE**.



- Now you can select the four files "111 Amadeus..." to "114 Amadeus..." respectively and load them via the Load/Install file function.



We now wish you much joy in making music with SEMPRA 2.0 and are sure that the new sound experience will inspire you!

On the following pages you will find some notes on the new playing functions of the SEMPRA 2.0 Basic Upgrade. Information on the other new function apps can be found in the respective operating notes.

The new functions in SEMPRA 2.0

The basic operation of SEMPRA does not change with the 2.0 upgrade. You can use all known functions as usual. However, the upgrade adds some interesting new options, which we would like to present to you here.

Data overview

With the 2.0 upgrade, the SEMPRA receives completely new factory data, i.e. new SONGs with the corresponding SONG presets and new styles. In addition, there are 80 new sounds with the corresponding sound presets and also an update for about 200 existing sounds with detail optimizations.

6 new PRO drum kits are based on new sample material and provide especially pop and Schlager drums as well as a vintage kit with the drum sounds of the former analog Böhmat rhythm machines. Overviews of all SONG and sound banks as well as drum kits can be found in the appendix to these operating notes.

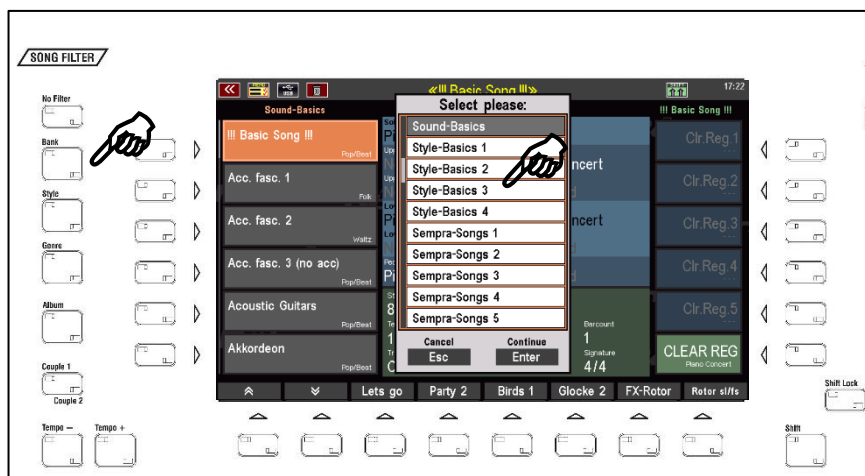
Here we would like to show you how to quickly find the new data when playing. We will start with the SONGs or preset registrations, which will give you the quickest overview and of course a sound impression of SEMPRA 2.0.

Related to the new SONG categories, new selection methods have also been integrated into the SONG filter functions (row of buttons to the left of the display), which now make searching or finding the desired SONG even easier. These new functions are explained in the following section at the respective SONG categories.

SONG categories and their selection

SEMPRA 2.0 already contains over 2,700 new registrations in the basic version, i.e. without additional software extensions. These are organized in 10 **SONG banks**.

With the SONG filter button **[BANK]** activated (to the left of the display), you can see and select the corresponding banks at the factory positions by tapping the button a second time:



Sound Basics

A SONG bank with 64 SONGS, each with 6 individual preset variations. The SONG names already give away: These SONGS or the contained presets are not meant for certain music titles, but rather oriented to certain sound or instrument categories. So you will find SONGS like Accordion, Brass, E-Piano, Grand Piano, Orchestra, and so on.

In each of these SONGS you will find 6 individual presets that focus on the corresponding instrument character, but are otherwise musically independent and also use different styles, for example.

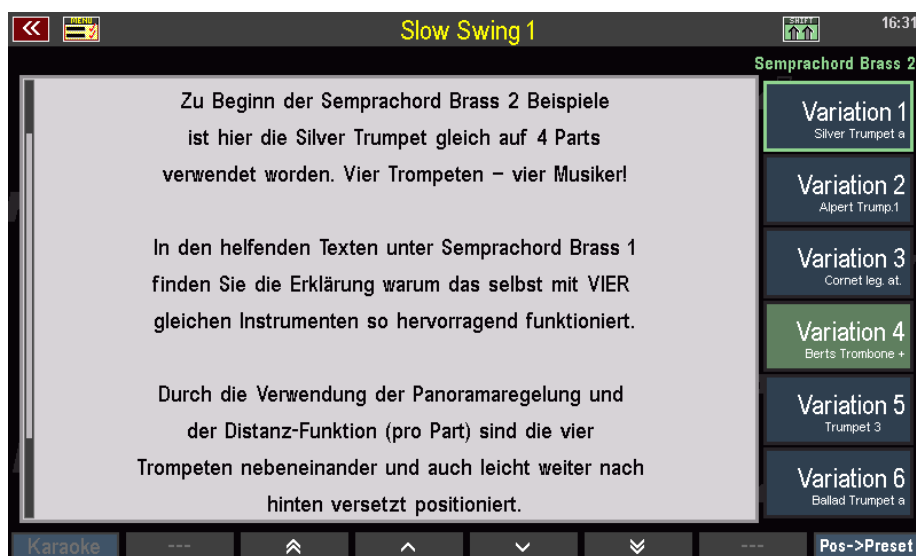
In the Sound Basics (but of course also in the other SONG categories), many of the new SEMPRA 2.0 sounds in particular, but also new functions such as the new SempraChord are used extensively. At the back of the bank you will also find some demo SONGS that do not use styles but interactive playback accompaniments, i.e. midifiles whose sequence you can freely determine via the style pattern buttons or the recall of the 6 SONG presets.

Attention: The Sound-Basics SONG bank also contains some positions in which sample SONGS for the extensions Accordion Fascination (Art.-No. 42311) or D-MiX Rotor (Art.-No. 41156) are located. These SONGS are integrated via the installation files belonging to these extensions and are not available if these extensions are not available.

Info text and song lyrics in Sound Basics

And so that you always know what our musicians were thinking when you call up the Sound Basics, the SEMPRA also provides you with some background info on the display at the "push of a button"! To do this, the SEMPRA must be equipped with the **Karaoke/Text Display** app (art. no. 41159).

If this app is available, you will see that the LED in the control panel button **[Lyric]** lights up for the corresponding SONGS. Tap the button to show the corresponding info texts or (karaoke) song texts in the display:



In the demo SONGS with playbacks, the lyrics run synchronously with the playback:

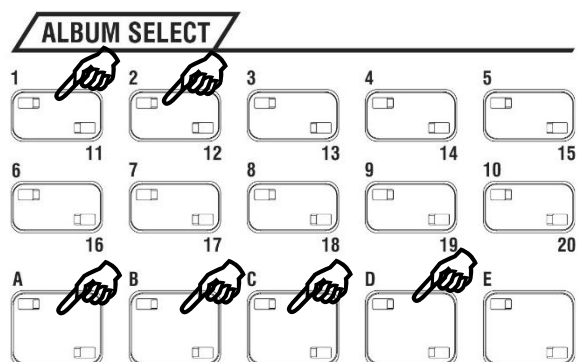


The preset selection on the right side of the display or via the preset buttons between the manuals remains active even when the text display is called up. This way you can navigate through the presets even during the text display and see how the text display follows the preset selection.

Select playback demos via ALBUM SELECT

By the way: You can also select the included demo SONGS with playbacks via the positions 1 A, B, C, D or 2 A, B in the button group **ALBUM SELECT**.

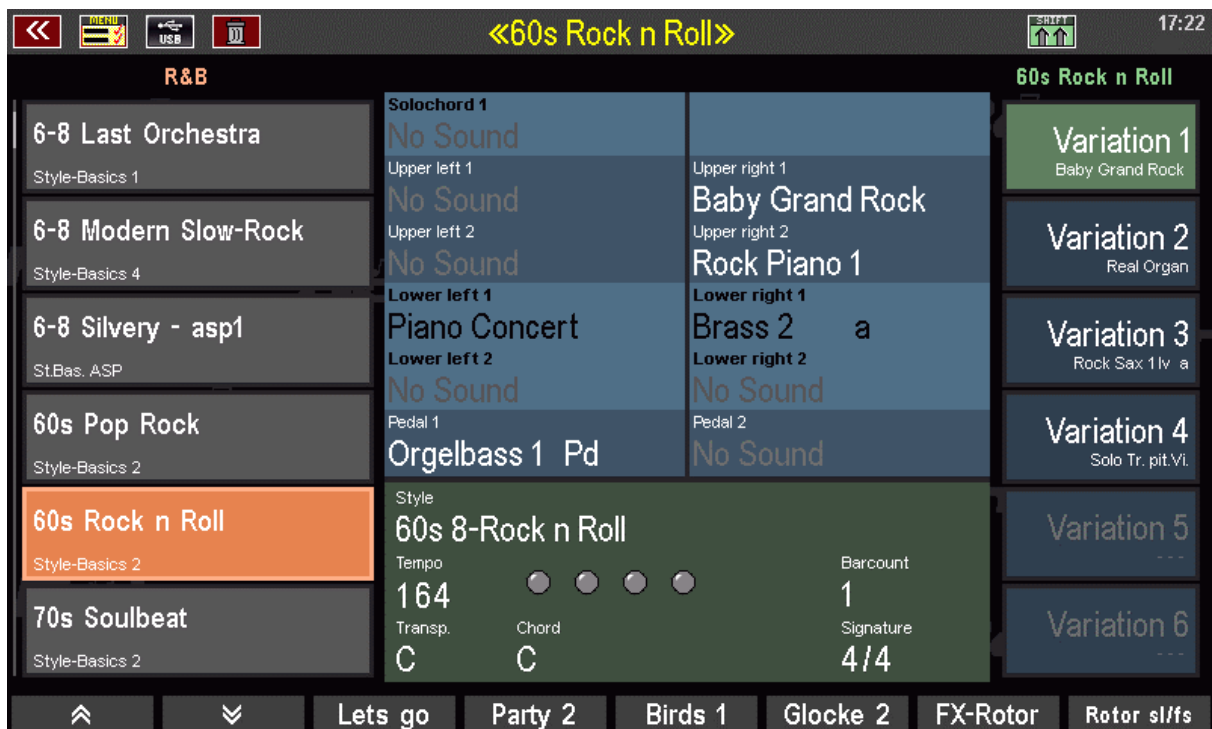
For this purpose we have integrated a corresponding album theme "DEMO" into the 2.0 software.



Style-Basics – the SEMPRA One-Touch presets

The SONG banks **Style-Basics 1...4** form this new SONG category in SEMPRA 2.0: In total, you will find 256 SONGs in the Style-Basics banks, corresponding to the 256 new styles in version 2.0. For each factory style, a SONG is available with 4 preset variations matched to the respective style. We can also call these registrations **One-Touch presets**.

The SONGS in the Style-Basics are sensibly named after the Styles, i.e. for each Style you will find a SONG with the same name. So you can now select your styles directly from the SONG list and have 4 matching registrations for the selected style at hand, here e.g. for the style **60s Rock n Roll**:



Via the SONG filter **[Style]** you can filter the SONG list as known according to the 12 style categories (selection of the style category for filtering: press filter button **[Style]** 2x. Depending on the selected style category, only SONGs belonging to the selected style category are then displayed in the SONG list.

However, this filtering includes SONGs from all banks that correspond to the style category selected for the filter function.

A new **SONG filter function** makes things even more convenient and allows further specification of the SONG filter:

New filter functions for the SONG list

In SEMPRA 2.0 it is now possible to combine the two SONG filter buttons **[Style]** and **[Genre]**! To do this, simply switch on both buttons (these buttons no longer cancel each other out like the other SONG filter buttons) so that the LEDs in both buttons light up.

If you keep the **[Genre]** button pressed, you can choose between the known genre types. The SONG list is filtered accordingly.

So, for example, set the Style Basics genre once and confirm with **[Enter]**:

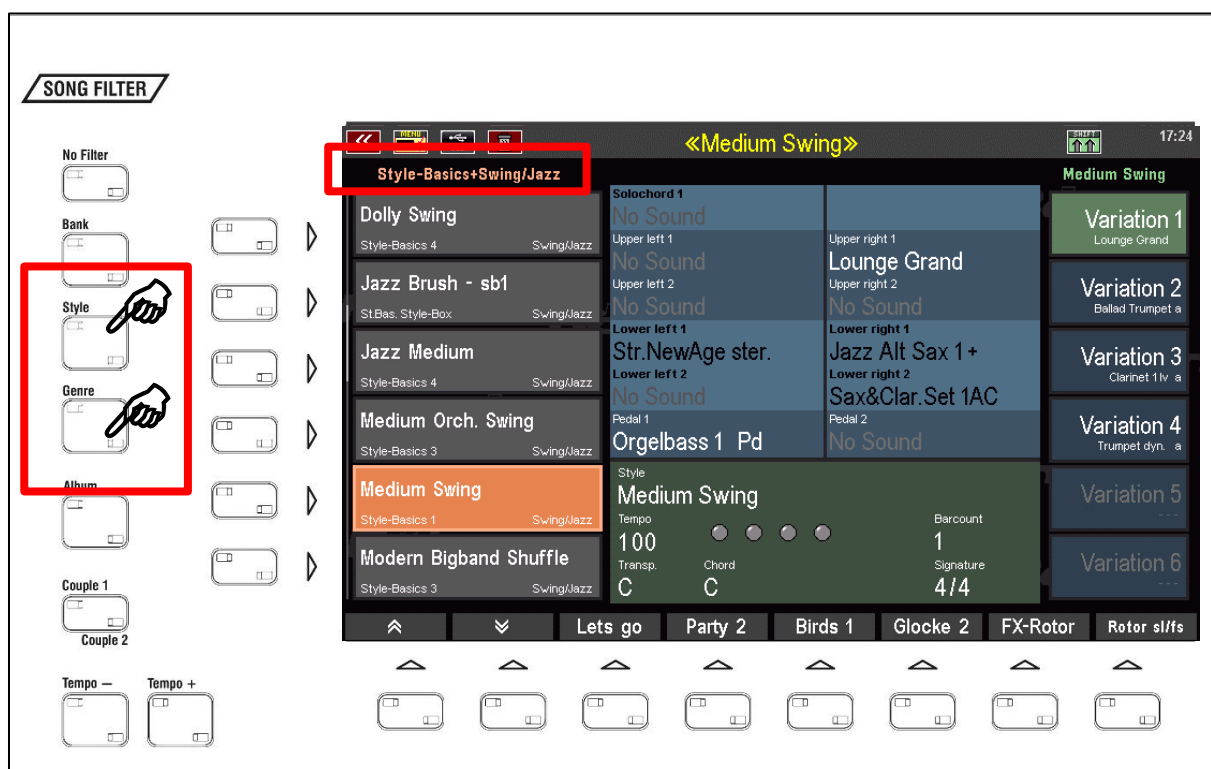
The SONG list now only shows SONGS that

1. belong to the **Style Basics** genre
2. use a style that corresponds to the category currently selected for filtering.

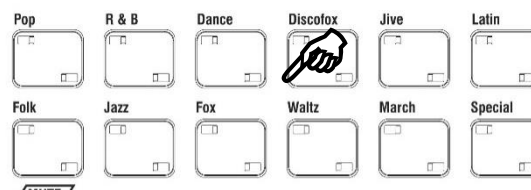
This can then look like this:



The selected filter combination will be displayed above the SONG list, here thus **"Style-Basics+Swing/Jazz"** (Genre+Style category):



You can even switch the style categories themselves in this filter mode directly via the style buttons on the control panel.



If you set the filter combination Style and Genre Style-Basics as in our example, you can now select the desired category via the Style buttons and immediately have a list of all Style-Basic SONGs belonging to this Style category available in the display. Thus, with this new filter method, all One-Touch Presets for the Styles are directly available to you.

If other style packages are installed on your SEMPRA, you will also find the corresponding Style Basic SONGs for the styles contained there in the SONG lists. This is because the corresponding Style Basics are also contained in the packages for these styles.

SEMPRA SONGs

The third SONG category is formed by the 4 SONG banks SEMPRA Songs. These banks form the new SEMPRA 2.0 song list. Each bank contains 64 title-related SONGs from the German and international music repertoire, each filled with 6 finely tuned SONG presets from INTRO to ENDING, with which the corresponding title can be sonically presented.

Simply select the desired title, tap on the SONG and start playing!

The contents of the individual presets from INTRO to ENDING are coordinated in such a way that the corresponding sections of the original title are arranged in a musically meaningful way. In the choruses, for example, you will find climaxes, while the verse presets are mostly dominated by solo instruments.



The SEMPRA song list can be extended with further SONG packages, e.g. the SONG lists "Schlager & Internationale Hits" (Art.-No. 42363) with 64 SONGs and the list "Weihnachten und Segenslieder" (Art.-No. 42361) are already available.

General information about the SEMPRA 2.0 registrations

You have now already become familiar with the SONG categories in SEMPRA 2.0 and know how to comfortably navigate through the extensive amount of registrations. You have also become acquainted with some specials such as the info texts in the Sound Basics or the extended filter options of the SONG list, which is particularly useful for the Style Basics

Here now some basic functions to the registrations contained in the SONGs:

Balanced volume levels

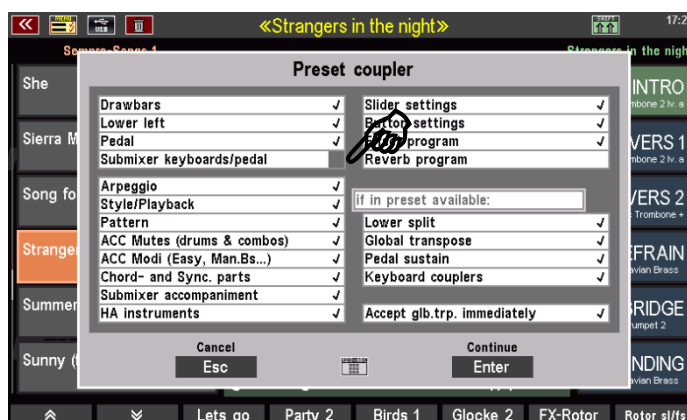
A lot of emphasis was put on easy playability and balance! So you will have already noticed during the first test play that e.g. the volume controls for the manual areas or the accompaniments do not change during the SONG and preset selection. Extreme volume jumps between SONGS and presets are now a thing of the past.

The individual parts and e.g. the accompaniments were mixed in such a way that they do not play on maximum in the volume, but still "headrooms" are present. In the parts of the upper manual, for example, you will notice that the maximum volume is usually around 100 or just above. So you can always get a little more volume out of it if you think it's necessary for a sound and just resave the preset.

The sub-manual on the left - usually the accompaniment is played here - is lowered in volume compared to the other keyboard areas via the corresponding Submix control **Lower left**. This way, the registration here never "slays" the style accompaniment.

If you generally want a higher volume for this area, or generally want to adjust the volume ratios of the manuals to each other, you can do this very easily using the Preset Couple functions. In the Preset Coupler, simply switch off the submixer switching for the manuals and the pedal by removing the corresponding check mark:

You can then manually adjust the overall volumes of the manual ranges with the corresponding submix controls via the control panel and all presets will "follow".



Integration of all playing functions

The new SEMPRA 2.0 registrations also use - as far as musically useful - some additional functions from optional function apps, such as the **Distance** function from the Sound Controller app (art. no. 41153). The corresponding effects are only audible if the SEMPRA is equipped with these apps, otherwise you will hear the registrations without these effects.

However, SEMPRA 2.0 itself also brings new, extremely interesting playing functions, such as the extremely interesting **SempraChord**:

SempraChord – Ensemble play with only one finger

You already know the versatile solo chord functions of the SEMPRA from the explanations in the main user manual: Unique is the possibility to use any manual part as a solo chord instrument and even to assign an own solo chord type to each instrument.

The new **SempraChord** enriches the solo chord function of the SEMPRA with another extremely interesting variant:

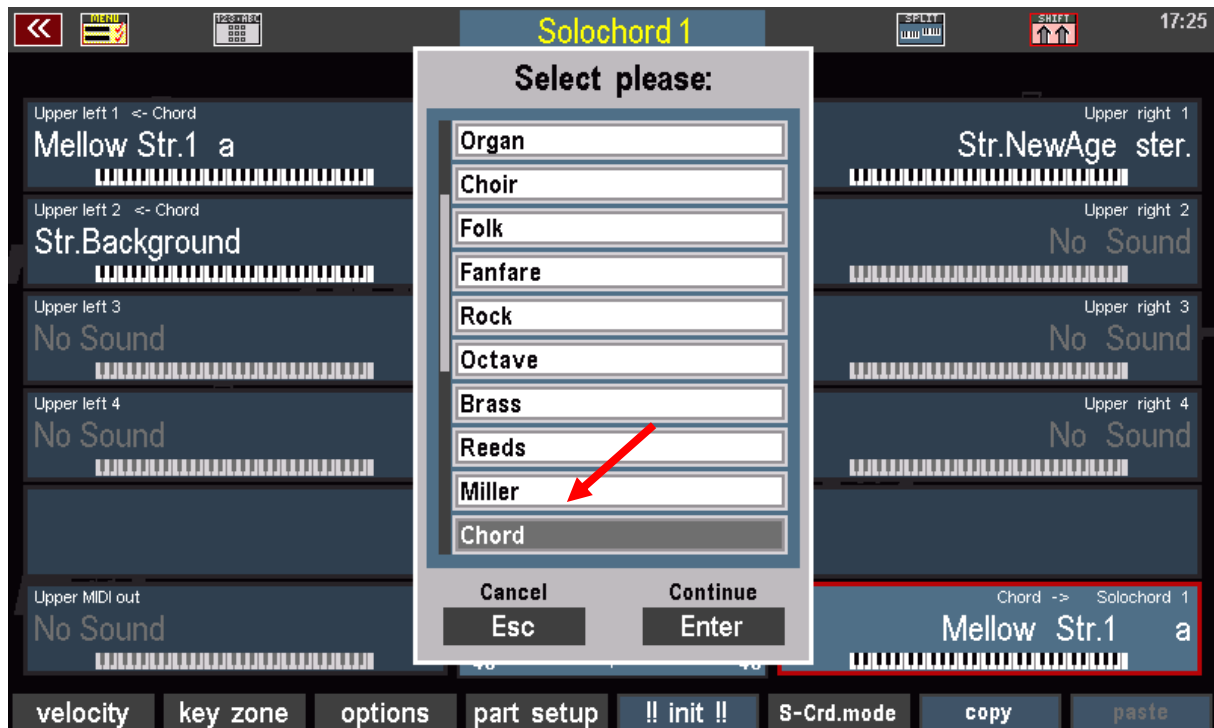
- If you switch the parts **Solochord 1**, **Upper left 1** and **Upper left 2** (as well as **Upper left 3**, if available) to Solochord and assign the same Solochord type to all of them, the notes of the Solochord are divided between these parts.
- The part **Solochord 1** always plays the first Solochord note, **Upper left 1** the second and **Upper left 2** the remaining notes. If **Upper left 3** is present, this part can be added and play the fourth note.
- If fewer parts are used, e.g. only **Solochord 1** and **Upper left 1**, the last "left" part in the row plays all remaining notes.
- So this part chain does not have to be complete, but it must not be broken either, otherwise the "higher" parts will play the complete solo chord as before.

Here is an example setting for a SempraChord registration from Sound Basics:



The part **Upper right 1** plays the melody normally, the other three parts (Solochord 1, Upper left 1 and left 2) are switched to **SoloChord** mode (recognizable by the entry "Chord" next to the part name).

The type "Chord" is set for all three solochord parts involved:



Of course, the **[SoloChord]** button on the control panel must be on for the solo chord to be active and for the effect to be audible.

A tip: With the **Solo** function on the **[F]-button 2** in the **part editor** you can listen to the individual parts and follow exactly which notes are played in each case when you finger the chords on the submanual on the left.

The attraction of SempraChord is the much more realistic musical expression of the solo chord effect. The instruments involved (the sounds you assign to the parts involved) do not all play the same complete harmony, but different voices, which corresponds to the actual character of such an ensemble. The harmony effect is created only by the coming together of these individual single voices.

Try it out for yourself. Also use different sounds for the parts involved, this way you can create the most diverse ensemble. Also experiment with the many playing parameters for the parts involved, e.g. also the Distance function, Panorama, individual swell control, etc. Many creative possibilities are available!

But the best thing about SempraChord is that it is so easy to play: You simply control your SempraChord ensemble with only one finger of your right hand, with which you play the melody in one voice. Everything else is done by SempraChord!

In the Song Basics you will find some example SONGS, but also in the other registrations in SEMBRA 2.0 the new SempraChord is often used.

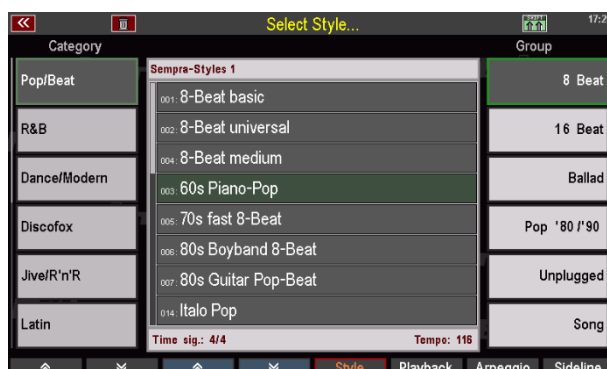
New styles and style functions in SEMPra 2.0

Features of the new SEMPra 2.0 Styles

With SEMPra 2.0, your instrument has a completely renewed library of 256 professional style accompaniments.

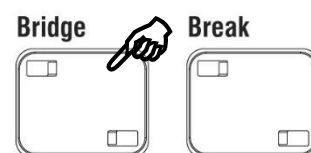
The new SEMPra 2.0 Style collection consists mainly of completely new material, some proven styles have been adopted, but also completely revised and brought to the new 2.0 level. This also applies to the various additional style packages that are available for SEMPra and for which new versions are now available in 2.0 status. Corresponding updates are available for existing style packages. You can find more details in our price lists.

Of course, the new SEMPra 2.0 styles often use the new Pro drum kits that were installed with the upgrade. Especially the Pop and Schlager styles benefit from these new kits, but they are also a valuable sonic enrichment for the other characters. Listen to the new styles in detail and let yourself be inspired! And you have already learned in the previous chapter that in the Style Basic Registrations there are 4 example presets available for each Style.



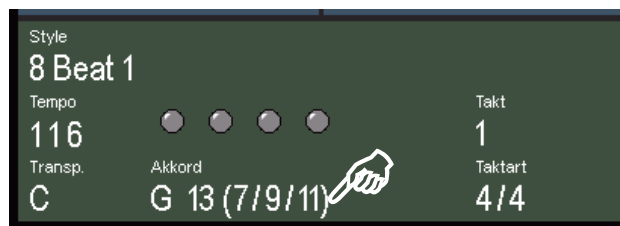
The following applies to all new SEMPra 2.0 styles:

- All styles have 4 fully composed variations incl. own Intros/Endings.
- All styles have an independent bridge pattern, which can be called up via the **[Bridge]** button. Usually a one-bar pattern is stored here, but some styles also have complete bridge figures of several bars.
- The styles contain separate tracks for major and minor harmonies wherever it makes musical sense. This is especially beneficial for the intro and ending patterns, which always play harmonically correct motifs.
- A lot of emphasis was also placed on balanced volume ratios in the styles. Drums, bass and accompaniment tracks have been levelled throughout so that the corresponding submix controls on the control panel are always at the same level and still leave "room for improvement". After all, the accompaniment should accompany and not "slay" your melody playing“.



Advanced chord control

In addition to the actual styles, the accompaniment control has also been enhanced. For example, the accompaniment now recognizes significantly more chord types when the full-fingered chord control is active.



Flexible bass control for slash chords

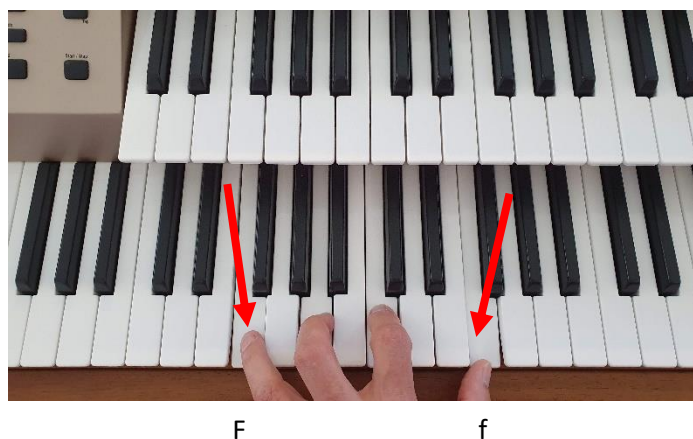
An important musical stylistic device are the so-called slash chords: In these harmonies the bass player does not play the root note of the respective chord, but another note. In sheet music you will find the corresponding chord symbols like C/e or F/a etc. In front of the slash is the chord, behind the slash is the bass note to be played.

With the extended chord control of SEMPra 2.0, you can now play such slash chords correctly in the automatic accompaniment - if full fingered chord control is activated. You determine the desired bass tone directly by the corresponding fingering for the chord.

To activate this bass control, you only have to finger the respective chord in 4 voices. The note that is to be played as bass note is to be fingered 2x in octave intervals. The accompaniment control recognizes this way of playing and plays exclusively this double fingered note in the bass (in the rhythm of the respective bass score). As soon as no more double note is fingered, the bass accompaniment changes back to its standard score. An example:

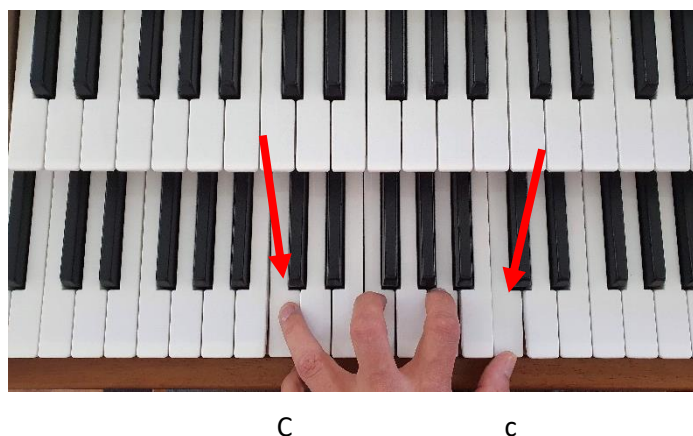
F-maj chord – fingered in four voices. The note F is played 2x in octave intervals.

- ➔ The bass plays F, which is the root note.
- ➔ If one F is released again, the standard partiture of the bass track will sound again.



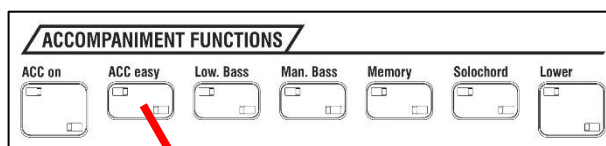
F-maj chord – fingered in four voices. The note C is played 2x in octave intervals.

- ➔ The bass plays the note C, so the slash chord sounds F/c.
- ➔ If one C is released again, the standard partiture of the bass track will sound again.



Extended one finger chord "pad"

There is also an interesting extension for the players who accompany themselves with one of the One-Finger chord modes (1-finger Boehmat or 1-finger other, to be activated via the control panel button [ACC easy]).



If one of these 1-finger accompaniment types is active, the parts **Lower 1 left**, **Lower 2 left** and **Lower 3 left** - as far as they are active - form a sound pad "behind" the style accompaniment. The chord tones are divided between these parts as follows:

Lower left 1: plays the full chord

Lower left 2: plays only root note and fifth

Lower left 3: plays only third and fifth, or third and seventh, respectively.



Appendix 1: SEMPRA 2.0 SONG banks

Sound Basics

Bank	Num.	Name
101	001	!!! Basic Song!!!
101	002	Akkordeon
101	003	Brass Solo (+)
101	004	Brass Sets
101	005	E-Pianos
101	006	Grand Piano
101	007	Acoustic Guitars
101	008	E-Guitars
101	009	Orchestra 1
101	010	Orchestra 2
101	011	Pad Synthesizer
101	012	Power Synthesizer
101	013	Solo Synthesizer
101	014	Flutes
101	015	Sax Solo & Clarinet
101	016	Sax Sets
101	017	Schlager Synthesizer
101	018	X-mas
101	019	Percussions 1
101	020	Voices
101	021	Mono Synthesizer
101	022	Percussions 2
101	023	Semprachord Brass 1
101	024	Semprachord Saxes
101	025	Semprachord Strings
101	026	Semprachord Brass 2
101	027	Organ church
101	028	Choral (universal)
101	029	D-Mix Rotor organs 1
101	030	D-Mix Rotor organs 2
101	031	Acc. fasc. 1
101	032	Acc. fasc. 2
101	033	Acc. fasc. 3 (no acc)
101	050	D e m o s ... (Playback)
101	051	1 Afrikaan Beat - Bert K.
101	052	2 Sway - Pussycat Dolls
101	053	3 Radio Gaga
101	054	4 Ich war noch niemals in NY
101	055	5 Einmal nach Paris
101	056	6 Heut Abend hab ich Kopfweh
101	057	7 Die Kleine Kneipe
101	058	8 Rauschende Birken

Style Basics 1

Bank	Num.	Name
102	001	8-Beat Barock
102	002	8-Beat Piano Ballad
102	003	Acoustic 8-Beat soft
102	004	Unplugged Latin
102	005	Latin Samba
102	006	8-Beat universal
102	007	Blues Rock brothers
102	008	Beguine Classic
102	009	Alpen Schlager soft
102	010	Slowfox B.K.
102	011	Unpl. Ballad guitars
102	012	Moonlight movie 6-8
102	013	Funk-Shuffle
102	014	English Waltz 1
102	015	6-8 L.A. Slow-Rock
102	016	Slowfox
102	017	Wiener Walzer
102	018	Pub-Piano Quartett
102	019	Marsch universal
102	020	Medium Swing
102	021	Quickstep
102	022	Cool Jazz Ballad
102	023	Tango 4 two
102	024	Stand. Cha Cha
102	025	Mystic Chillout
102	026	16 L.A. Rag Beat
102	027	Trance 2 Dance
102	028	Rocky Shuffle
102	029	French Musette Waltz
102	030	Christmas Slow Waltz
102	031	Helens Schlager
102	032	Gospel Slow Waltz
102	033	Alpen Slowrock Ballade
102	034	Boogie Piano
102	035	Orchestra Bossa
102	036	Spanisch Pasodoble
102	037	Country 8-Beat
102	038	Happy Reggae music
102	039	Partypolka
102	040	9-8 Waltz
102	041	Dixieland
102	042	English Waltz 2
102	043	Soft Rumba
102	044	Salon-Beguine
102	045	6-8 Last Orchestra
102	046	British Pop Swing
102	047	Trance 6-8
102	048	Dance Cha Cha
102	049	Latin Party Pop
102	050	Folk-Pop
102	051	Analog 16-Ballad
102	052	Arabic holiday
102	053	Rocky Cha Cha
102	054	Five-4-tell
102	055	Serenade
102	056	Seemanns Walzer
102	057	Classic Bossanova
102	058	Beguine-Beat
102	059	Cold Playbeat
102	060	Vincent van Rock
102	061	Soul Beat
102	062	Soulband live
102	063	Funky Pop
102	064	Slow Bossa

Style Basics 2

Bank	Num.	Name
103	001	Ballad L.A. stage
103	002	Pop Bossa
103	003	Highland Slow Waltz
103	004	Swingfox
103	005	Slowfox Italo E.R.
103	006	Country Twist
103	007	Love Ballad 8-Beat
103	008	Traumschiff Beat
103	009	Contemporary Rock
103	010	Chartfox
103	011	Schlager open air
103	012	70s Chart Ballad
103	013	Horgen Partyarena
103	014	Sierra Alpin
103	015	Club Dance Beat
103	016	Ragtime
103	017	70s Country soft Pop
103	018	Slow Swing 1
103	019	Classic Bigband swing
103	020	Slow Swing 2
103	021	12-8 Ballad
103	022	Acoust. Jazz Combo
103	023	Gospel worship 6-8
103	024	Schlager Alpina
103	025	Schlager 6-8
103	026	Schlager 6-4
103	027	Schlager-Shuffle
103	028	Schlager 8-Beat
103	029	Twist 1
103	030	Germanys Switzer Bea
103	031	Country Waltz
103	032	Schlager-Shuffle one night
103	033	80s Boyband 8-Beat
103	034	Vintage Pop-Rock
103	035	60s Piano-Pop
103	036	8-Beat medium
103	037	70s fast 8-Beat
103	038	80s Guitar Pop-Beat
103	039	Westcoast Pop
103	040	US ChartHit
103	041	90s Guitar Pop
103	042	Unplugged Songwriter
103	043	Analog Ballad in the air
103	044	Contemporary Rock Ballad
103	045	Bond, James Bond
103	046	Bubblemum 8-Beat
103	047	Chart Shuffle
103	048	60s Pop Rock
103	049	60s Rock n Roll
103	050	Midnight Slow Blues
103	051	Blues Shuffle
103	052	70s Soulbeat
103	053	80s Disco-Party
103	054	Chilly synths
103	055	Dance 4 Teens
103	056	Dance on floor
103	057	Chillout synth
103	058	90s Cool Ballad
103	059	Apres Ski Schlager
103	060	Disco House
103	061	Howie Shuffle
103	062	Italo Shuffle
103	063	Discosamba
103	064	Berg-Dance

Style Basics 3

Bank	Num.	Name
104	001	60s Vintage
104	002	Twist meets Country
104	003	Universal Tango
104	004	Pasodoble Classic
104	005	BigBand fast swing
104	006	Slowfox Hawaiian
104	007	Deutscher Marsch
104	008	Orchestra Pad
104	009	Christmas drivers Shuffle
104	010	Univ. Jazz Waltz
104	011	Alpen Walzer
104	012	Dream Slowfox
104	013	Foxtrott BigBand
104	014	Stand. Country 8-Beat
104	015	Latin Pop Ballad
104	016	Sirtaki
104	017	Salsa
104	018	Bolero-Beguine
104	019	Samba Lounge
104	020	Foxtrott brush
104	021	Modern Schlager
104	022	Disco Hands
104	023	Scandinavian Pop Shuffle
104	024	Rock n Roll
104	025	SoulBrothers Jive
104	026	Irish Dance
104	027	70s Chart Country
104	028	Modern Bigband Shuffle
104	029	Christmas Swing medium
104	030	Pop Ballad movie
104	031	Movie Disco-Beat
104	032	Riff Reggae
104	033	Swing organ
104	034	US Military March
104	035	Oberschreiner + Zillerjäger
104	036	Orchester Marsch
104	037	Scandinavian Waltz
104	038	Italian Waltz
104	039	Charleston
104	040	Modern Bigband Swing
104	041	Foxtrott
104	042	Medium Orch. Swing
104	043	Swing Bigband
104	044	Country Ballad
104	045	Reel
104	046	Mallorca Discofox
104	047	Disco Philadelphia
104	048	Schlager Fieber
104	049	Schlager SlowRock
104	050	Jump Jive
104	051	Saturdaynight Disco
104	052	Rock n Roll-Beat
104	053	Tantella
104	054	Rock Shuffle
104	055	Rock n Roll Shuffle
104	056	Oldies Rock n Roll
104	057	Boogie-Jive
104	058	Annas Bolero
104	059	Soul Rock
104	060	2-step Greece
104	061	Modern Musical
104	062	Frankys Show Ballad
104	063	6-8 Marsch
104	064	Pop Country

Style Basics 4

Bank	Num.	Name
105	001	Careless Ballad
105	002	Rosenberg Partymix
105	003	Country Shuffle
105	004	Swing In the mood
105	005	Soft Country Ballad
105	006	Love is in the 70s
105	007	6-8 Modern Slow-Rock
105	008	70s Disco
105	009	16 B. Eltons Groove
105	010	70s Discofunk
105	011	Italo Pop
105	012	8-Beat Basic
105	013	Soft Ballad Rock
105	014	Hollywood Ballad
105	015	Bars Ballad
105	016	Feel groove
105	017	If tom. Ballad
105	018	8-Beatrock Petry
105	019	8-Powerbeat
105	020	Blue Slowrock
105	021	Synth machine
105	022	Schlager Party-Rock
105	023	Christmas Swing
105	024	March of drummerboy
105	025	Quickstep organ
105	026	Shuffle organ
105	027	Polka Last
105	028	Bigband Showtune
105	029	Conquest
105	030	Bolero classic
105	031	Disco feeling
105	032	Samba Brasil
105	033	Samba Carnival
105	034	Slow Waltz
105	035	Waltz Vienna
105	036	Slowfox Sailer
105	037	Hollywood wild west
105	038	Waltz Orchestra
105	039	Moonlight slow
105	040	Cabaret Fox
105	041	Bluegrass
105	042	Country Hit
105	043	Mambo
105	044	Limbo
105	045	Modern Latin
105	046	Swing Happy James
105	047	Dolly Swing
105	048	Twist 2
105	04	9 Rock around
105	050	Copa ca Samba
105	051	Samba Combo
105	052	Shuffle Bigband
105	053	90s Pop
105	054	Shuffle Combo
105	055	Let your love fl.
105	056	Swing New York
105	057	Rock MMW
105	058	Electric Dance Club
105	059	Jazz Medium
105	060	Tage wie diese
105	061	Moviest. 70s
105	062	Quando Samba
105	063	Cologne Reggae
105	064	Synth fly

Sempre Songs 1

Bank	Num.	Name
106	001	Moonriver
106	002	Verde
106	003	If you don't know me
106	004	Strangers in the night
106	005	All out of love
106	006	Groovy kind of love
106	007	Le Reve Serenade
106	008	The Rose
106	009	Can't smile without
106	010	Sentimental Journey
106	011	You raise me up
106	012	Begin the Beguine
106	013	Raindrops keep falling
106	014	One Moment in time
106	015	Second Waltz
106	016	Viva la more Roland remix
106	017	Summertime
106	018	Kind of hush
106	019	Halleluja
106	020	Hello Dolly
106	021	Under the bridges of Paris
106	022	Sway (Shall we dance)
106	023	If you could read
106	024	Save the last dance
106	025	The Entertainer (Der Clou)
106	026	Ticket to heaven
106	027	I prom. myself (partyvers.)
106	028	Waterloo
106	029	Mame
106	030	Südlich von mir R.K.
106	031	Traumschiff
106	032	Help me make it (Reggae)
106	033	Blue Spanish Eyes
106	034	Are you lonesome
106	035	Can't help falling
106	036	Mull of Kintyre
106	037	La Paloma
106	038	Atemlos
106	039	I have a dream
106	040	Lasciatemi Cantare E.R.
106	041	We don't talk
106	042	Song for guy
106	043	One night at a time
106	044	Every breath you take
106	045	Fremd in einer gr. Stadt
106	046	Tango d'amour
106	047	Josephine
106	048	She
106	049	Ein Stern
106	050	Tennessee variation 2021
106	051	Ewig He&An (div. Schlager)
106	052	Vincent
106	053	Lay down Sally
106	054	Love (B.K.)
106	055	Yesterday
106	056	Charmaine
106	05	7 Sweet Caroline
106	058	Hotel California
106	059	Killing me softly
106	060	Samba Medley
106	061	Waltzing Mathilda
106	062	Sunny (fast version)
106	063	Red roses for a blue lady
106	064	Sierra Madre

Sempre Songs 2

Bank	Num.	Name
107	001	Brazil
107	002	Z. Schluss Guten Abend
107	003	Morgens um 7
107	004	Schenk mir noch eine Std
107	005	Clair
107	006	All night long
107	007	Country roads
107	008	The last waltz
107	009	Tea for two
107	010	Take five
107	011	Nordsee Walzer-Medley
107	012	Girl from Ipanema
107	013	Clocks (Coldplay)
107	014	I am sailing
107	015	Unchained melody
107	016	Teneriffa melodie
107	017	Guantanamera
107	018	Amazing Grace
107	019	Tie a yellow ribbon
107	020	Lara's Theme
107	021	Feelings
107	022	Bei mir bist du schön
107	023	Capri Flippers
107	024	Die kleine Kneipe
107	025	Ganz in weiss
107	026	Warum hast du nicht nein
107	027	Amapola Twist
107	028	Mein Herz es brennt
107	029	Lucille
107	030	Eine Nacht (Ramon R.)
107	031	Musicbox dancer
107	032	For a few dollars
107	033	In the ghetto
107	034	Supergirl
107	035	In the air tonight
107	036	Bohlies Party-Medley
107	037	Tausendmal du
107	038	Was ich dir sagen will
107	039	Love me tender
107	040	Für mich soll's rote Rosen
107	041	Besame Mucho (soft vers.)
107	042	Griechischer Wein
107	043	Abanda
107	044	Eine Reise ins Glück
107	045	Einsamer Hirte
107	046	Che Sara
107	047	Dolannes Melodie
107	048	One way wind
107	049	I do I do I do
107	050	Blowin' in the wind
107	051	Weisse Rosen aus Athen
107	052	Let it be
107	053	You are my hidingplace
107	054	My way
107	055	More of you
107	056	Ich bin wie du
107	057	Er gehört zu mir
107	058	Lieder der Nacht
107	059	Sogno Romantico
107	060	King of the road
107	061	Am Tag als Conny Kr.
107	062	In the mood
107	063	Tornero
107	064	Love is in the air

Sempre Songs 3

Bank	Num.	Name
108	001	Wenn der Sommer k.
108	002	Greensleeves
108	003	Trag mich zu d. Stern.
108	004	Conquest of paradise
108	005	True Love
108	006	Moviestar
108	007	Magic fly
108	008	Hymn (Jesus came down)
108	009	So whats new
108	010	No B. like Showbusiness
108	011	River quai march
108	012	Af un zu
108	013	Zillertaler Hochzeit
108	014	An d. sch. blauen Donau
108	015	Kufstein Lied
108	016	A taste of honey
108	017	Ti amo
108	018	Sag mir quando
108	019	El Cumbanchero
108	020	Copacabana (At the Copa)
108	021	Bad Moon Rising
108	022	Jambalaya
108	023	Hands up
108	024	Soli
108	025	Please release me
108	026	Spanish Ballerina
108	027	Careless whisper
108	028	An Tagen wie diesen
108	029	Feel (Rob. W.)
108	030	Lady in red
108	031	My heart will go on
108	032	Abendlied (EG 487)
108	033	Memory
108	034	Mexican Girl
108	035	This world today is a
108	036	Whiter Shade of Pale
108	037	New York New York
108	038	Cabaret (show theme)
108	039	Wolfgang P. Hits
108	040	Crossfire (Himbeereis)
108	041	How deep is your love
108	042	Imagine
108	043	Il Silenzio
108	044	Fly me to the moon
108	045	Games that lovers play
108	046	Eternal Flame
108	047	Dream a little dream
108	048	Fields of gold
108	049	Chariots of f. Sempra 2.0
108	050	Cherish
108	051	Chianti Wein
108	052	Congratulations
108	053	Stille vor dir
108	054	Herr ich komme zu dir
108	055	Dornenvögel
108	056	Patricia Cha Cha
108	057	Windmills
108	058	Petit fleur
108	059	Oxygene
108	060	Wind auf der Haut (R.K.)
108	061	Volare modern version
108	062	Für D. schiebe ich die W.
108	063	Over the rainbow
108	064	Für Elise

Sempre Songs 4

Bank	Num.	Name
109	001	Heal the world
109	002	Only You
109	003	If Y. leave me now (lounge)
109	004	Ich hätt getanzt h. Nacht
109	005	Dave Dudley (new mix)
109	006	Zirkus Renz
109	007	You are the sunshine of
109	008	Wunderland bei Nacht
109	009	Der Junge mit der M.
109	010	Blueberry Hill
109	011	California Blue
109	012	Jenseits von Eden
109	013	Nur ein Clown / only you
109	014	Rosam. Herz Schm. (Medl.)
109	015	Candle in the wind
109	016	Biene Maja
109	017	Down by the riverside
109	018	O sole mio
109	019	La Montanara (Chöre!)
109	020	Nabucco
109	021	Aranjuez
109	022	Aloha oe Hawaii
109	023	Hallelujah sing a song
109	024	Aber Dich
109	025	All my loving
109	026	Amor
109	027	Some broken hearts
109	028	Children (eff.-Pianos)
109	029	I'm singing in the rain
109	030	Stimmen im Wind
109	031	No matter
109	032	Wenn ich einmal reich w.
109	033	Que sera sera
109	034	Scarborough fair
109	035	Chim chim Musette
109	036	Mandy
109	037	Magic trumpets
109	038	Sag Dankesch. m.r. Rosen
109	039	Thank you for the music
109	040	Let's twist again
109	041	Living next door to A.
109	042	Zaubermond
109	043	Komm und tanz mit mir
109	044	Sunshine Reggae
109	045	Sommer in der Stadt Medl.
109	046	Sorry seems to be (remix)
109	047	Red red wine
109	048	Tangerine
109	049	Summer Samba
109	050	La vie en rose
109	051	Thema aus der n. Sempra
109	052	Moonlight Serenade
109	053	Liebestraum Bossa
109	054	Way to your heart
109	055	Life is a Rollercoaster
109	056	Words
109	057	Willenlos
109	058	Rote Rosen rote Lippen
109	059	Barcarole (+ div. Walzer)
109	060	Septemberwind
109	061	Smoke gets in your eyes
109	063	Hey Jude
109	064	Nikita

Appendix 2: SEMPRA 2.0 styles

Bank	Num.	Name	Bank	Num.	Name
101	001	8-Beat basic	102	001	Modern Schlager
101	002	8-Beat universal	102	002	Mallorca Discofox
101	003	60s Piano-Pop	102	003	Horgen Partyarena
101	004	8-Beat medium	102	004	Alpen Slowrock Ballade
101	005	70s fast 8-Beat	102	005	Alpen Schlager soft
101	006	80s Boyband 8-Beat	102	006	Schlager Walzer 6-4
101	007	80s Guitar Pop-Beat	102	007	Schlager Alpina
101	008	16 L.A. Rag Beat	102	008	Disco Hands
101	009	Westcoast Pop	102	009	Disco Philadelphia
101	010	US Chart Hit	102	010	Helens Schlager
101	011	8-Beat Piano Ballad	102	011	Howie Shuffle
101	012	70s Chart Ballad	102	012	Italo Shuffle
101	013	Analog 16-Ballad	102	013	Schlager Fieber
101	014	Ballad L.A. stage	102	014	Schlager SlowRock
101	015	Contemporary Rock Ballad	102	015	Saturdaynight Disco
101	016	Acoustic 8-Beat soft	102	016	Sierra Alpin
101	017	Love Ballad 8-Beat	102	017	Scandinavian Pop Shuffle
101	018	90s Guitar Pop	102	018	Jump Jive
101	019	Unplugged songwriter	102	019	Italian Waltz
101	020	Unpl. Ballad Guitars	102	020	Rock n Roll-Beat
101	021	Traumschiff 8-Beat	102	021	SoulBrothers Jive
101	022	Analog Ballad in the air t.	102	022	Rocky Shuffle
101	023	Bond, James Bond	102	023	Rock n Roll Shuffle
101	024	Bubblegum 8-Beat	102	024	Rock Shuffle
101	025	Chart Shuffle	102	025	Rock n Roll
101	026	60s Pop Rock	102	026	Oldies Rock n Roll
101	027	British Pop-Swing	102	027	Country Twist
101	028	Contemporary Rock	102	028	Twist 1
101	029	60s 8-Rock n Roll	102	029	Boogie Piano
101	030	6-8 Last Orchestra	102	030	Boogie-Jive
101	031	6-8 Moonlight movie	102	031	Ragtime
101	032	6-8 Modern Slow-Rock	102	032	Annas Bolero
101	033	12-8 Ballad	102	033	Latin Samba
101	034	Blues Rock brothers	102	034	Samba Lounge
101	035	Midnight Slow Blues	102	035	Discosamba
101	036	Blues Shuffle	102	036	Classic Bossanova
101	037	70s Soulbeat	102	037	Slow Bossanova
101	038	Funky Pop	102	038	Pop Bossa
101	039	Funk-Shuffle	102	039	Orchestra Bossa
101	040	Soul Beat	102	040	Stand. Cha Cha
101	041	Soulband live	102	041	Dance Cha Cha
101	042	Gospel Slow Waltz	102	042	Rocky Cha Cha
101	043	Vincent van Rock	102	043	Soft Rumba
101	044	Cold Playbeat	102	044	Unplugged Latin
101	045	Gospel Worship 6-8	102	045	Beguine Classic
101	046	70s Disco	102	046	Beguine-Beat
101	047	70s Disco-Funk	102	047	Salon-Beguine
101	048	80s Disco-Party	102	048	60s Vintage
101	049	Dance 4 Teens	102	049	Bolero-Beguine
101	050	Trance 2 Dance	102	050	Latin Pop Ballad
101	051	Dance on floor	102	051	Salsa
101	052	Disco House	102	052	Latin Party Pop
101	053	Electric Dance Club	102	053	Folk-Pop
101	054	Club Dance Beat	102	054	Irish Dance
101	055	Chilli synths	102	055	Sirtaki
101	056	Mystic Chillout	102	056	Tarantella
101	057	Chillout synth.	102	057	Reel
101	058	90s Cool Ballad	102	058	Twist meets Country
101	059	Trance 6-8	102	059	Country 8-Beat
101	060	Schlager open air	102	060	70s Chart Country
101	061	Schlager-Shuffle	102	061	70s Country soft Pop
101	062	Apres Ski Schlager	102	062	Country Ballad
101	063	Schlager 6-8	102	063	Stand. Country 8-Beat
101	064	Chartfox	102	064	Universal Tango

Bank	Num.	Name	Bank	Num.	Name
103	001	Tango 4 two	104	001	Swing In the mood
103	002	Spanish Pasodoble	104	002	Pop Country
103	003	Arabic holiday	104	003	6-8 Marsch
103	004	Pasodoble classic	104	004	Country Shuffle
103	005	Slow Swing 1	104	005	Soft Country Ballad
103	006	Medium Swing	104	006	Frankys Show Ballad
103	007	Bigband fast swing	104	007	Careless Ballad
103	008	Swing Bigband	104	008	6-8 L.A. Slow-Rock
103	009	Modern Bigband Swing	104	009	English Waltz 2
103	010	Medium Orch. Swing	104	010	Let your love fl.
103	011	Dixieland	104	011	Waltz Orchestra
103	012	Classic Bigband swing	104	012	Bars Ballad
103	013	Slow Swing 2	104	013	90th Pop
103	014	Cool Jazz Ballad	104	014	Italo Pop
103	015	Acoust. Jazz Combo	104	015	Feel groove
103	016	Slowfox Italo E.R.	104	016	If tom. Ballad
103	017	Slowfox B.K.	104	017	16 B. Eltons Groove
103	018	Swingfox	104	018	Cabaret Fox
103	019	Foxtrott	104	019	Samba Brasil
103	020	Foxtrott Bigband	104	020	Shuffle organ
103	021	Slowfox	104	021	Quickstep organ
103	022	Slowfox Hawaiian	104	022	Shuffle Bigband
103	023	Dream Slowfox	104	023	Slowfox Sailor
103	024	Modern Bigband Shuffle	104	024	Rock 8 MMW
103	025	Quickstep	104	025	Blue Slowrock
103	026	Charleston	104	026	8-Beatrock Petry
103	027	Scandinavian Waltz	104	027	Disco feeling
103	028	Alpen Walzer	104	028	Hollywood wild west
103	029	Wiener Walzer	104	029	Bolero classic
103	030	Seemanns Walzer	104	030	Christmas Swing
103	031	9-8 Waltz	104	031	Polka Last
103	032	Highland Slow Waltz	104	032	Swing New York
103	033	Serenade	104	033	Shuffle Combo
103	034	Univ. Jazz Waltz	104	034	Limbo
103	035	French Musette Waltz	104	035	Swing Happy James
103	036	English Waltz 1	104	036	Dolly Swing
103	037	Partypolka	104	037	Foxtrott brush
103	038	Deutscher Marsch	104	038	8 Powerbeat
103	039	Orchester Marsch	104	039	Berg-Dance
103	040	Marsch universal	104	040	Twist 2
103	041	Oberschreiner + Zillerjäger	104	041	Mambo
103	042	US Military March	104	042	Waltz Vienna
103	043	Pub-Piano Quartett	104	043	Moonlight slow
103	044	Swing organ	104	044	Conquest
103	045	Orchestra Pad	104	045	Samba Combo
103	046	Happy Reggae music	104	046	Copa ca Samba
103	047	Riff Reggae	104	047	March of drummer boy
103	048	Movie Disco-Beat	104	048	Bigband Showtune
103	049	Pop Ballad movie	104	049	Slow Waltz
103	050	Christmas drivers Shuffle	104	050	Jazz medium
103	051	Christmas Swing medium	104	051	Bluegrass
103	052	Christmas Slow Waltz	104	052	Samba Carnival
103	053	Five-4-tell	104	053	Country Hit
103	054	Schlager 8-Beat	104	054	Soft Ballad Rock
103	055	Germanys Switzer Bea	104	055	Hollywood Ballad
103	056	Country Waltz	104	056	Modern Latin
103	057	Schlager-Shuffle one night	104	057	Schlager Party-Rock
103	058	Vintage Pop-Rock	104	058	Synth machine
103	059	Soul Rock	104	059	Tage wie diese
103	060	2-step Greece	104	060	Moviest. 70s
103	061	Love is in the 70s	104	061	Quando Samba
103	062	Rock Around	104	062	Cologne Reggae
103	063	Rosenberg Partymix	104	063	Synth fly
103	064	Modern Musical	104	064	8-Beat Barock

Appendix 3: AMADEUS sounds and drumkits in SEMPRA 2.0

New: bold printed (banks ACC1- ACC4, Drumkits)

Bank	Sound	<Viva (GM1)>	Category	Group
1	1	Piano Grand GM	Pianos	Grand piano
1	2	Piano Rock GM	Pianos	Upright piano
1	3	Piano Upright GM	Pianos	Upright piano
1	4	Honky Piano GM	Pianos	Upright piano
1	5	El.Piano GM	Pianos	E-Piano
1	6	DX.Piano GM	Pianos	E-Piano
1	7	Harpsichord GM	Pianos	Cembalo
1	8	Clavinet GM	Pianos	Cembalo
1	9	Celesta GM	Percussion & others	Chromatic
1	10	Glockenspiel GM	Percussion & others	Chromatic
1	11	Music Box GM	Percussion & others	Chromatic
1	12	Vibraphone GM	Percussion & others	Chromatic
1	13	Marimba GM	Percussion & others	Chromatic
1	14	Xylophone GM	Percussion & others	Chromatic
1	15	Tubular Bell GM	Percussion & others	Solo drum
1	16	Santur GM	Strums	Ethnic
1	17	Rotor Organ GM	Organs	Rotary
1	18	Jazz Organ GM	Organs	Drawbars
1	19	Rock Organ GM	Organs	Rotary
1	20	Church Organ GM	Pipe organs	Combi small
1	21	Theatre Organ GM	Organs	Theatre combi
1	22	Musette GM	Accordions	Tremolo
1	23	Harmonica GM	Accordions	Harmonica
1	24	Accordeon GM	Accordions	Tremolo
1	25	Nylon Guitar GM	Strums	Unplugged
1	26	Country Guit. GM	Strums	Unplugged
1	27	Jazz Guitar GM	Strums	E-Guitar
1	28	Clean Guitar GM	Strums	E-Guitar
1	29	Muted Guitar GM	Strums	E-Guitar
1	30	Over.Guit.FX GM	Strums	Rock-Guitar
1	31	Dist.Guit.FX GM	Strums	Rock-Guitar
1	32	Harm.Guit.FX GM	Strums	Rock-Guitar
1	33	Ac.Bass GM	Basses	Acoust. bass
1	34	Finger.Bass GM	Basses	El.bass
1	35	Picked Bass GM	Basses	El.bass
1	36	Fretless Bass GM	Basses	El.bass
1	37	Funk Bass GM	Basses	El.bass
1	38	Slap Bass GM	Basses	El.bass
1	39	Synth Bass 1 GM	Basses	Synthe bass
1	40	Synth Bass 2 GM	Basses	Synthe bass
1	41	Violin GM	Strings	Violin / Viola
1	42	Viola GM	Strings	Violin / Viola
1	43	Violoncello GM	Strings	Cello / Bass
1	44	Contrabass GM	Strings	Cello / Bass
1	45	Tremolo Str. GM	Strings	Special
1	46	Pizzicato Str.GM	Strings	Special
1	47	Harp GM	Strums	Ethnic
1	48	Timpani GM	Percussion & others	Solo drum
1	49	Strings GM	Strings	Orchestra hard
1	50	Slow Strings GM	Strings	Orchestra soft
1	51	Synstrings 1 GM	Strings	Special
1	52	Synstrings 2 GM	Strings	Special
1	53	Aah Choir GM	Voices	Choir
1	54	Ooh Choir GM	Voices	Choir
1	55	Synvoice GM	Voices	Special
1	56	Orchestra Hit GM	Strings	Special
1	57	Trompete GM	Brass	Trumpet
1	58	Trombone GM	Brass	Trombone
1	59	Tuba GM	Brass	Tuba / Baritone
1	60	Muted Trp GM	Brass	Trumpet
1	61	French Horn GM	Brass	Horn
1	62	Brass GM	Brass	Combi
1	63	Synbrass 1 GM	Brass	Combi
1	64	Synbrass 2 GM	Brass	Combi

SEMPRA 2.0 UPGRADE - INSTALLATION AND PLAYING INSTRUCTIONS

1	65	Sopran Sax GM	Reeds	Saxophone
1	66	Alto Sax GM	Reeds	Saxophone
1	67	Tenor Sax GM	Reeds	Saxophone
1	68	Bariton Sax GM	Reeds	Saxophone
1	69	Oboe GM	Reeds	Bassoon / Oboe
1	70	English Horn GM	Reeds	Bassoon / Oboe
1	71	Bassoon GM	Reeds	Bassoon / Oboe
1	72	Clarinet GM	Reeds	Clarinet
1	73	Piccolo GM	Reeds	Flute
1	74	Flute GM	Reeds	Flute
1	75	Recorder GM	Reeds	Flute
1	76	Panflute GM	Reeds	Flute
1	77	Blown Bottle GM	Reeds	Flute
1	78	Shakuashi GM	Reeds	Flute
1	79	Whistle GM	Voices	Special
1	80	Ocarina GM	Reeds	Flute
1	81	Square GM	Synthesizer	Lead-Synth.
1	82	Saw Lead GM	Synthesizer	Lead-Synth.
1	83	Calliope GM	Synthesizer	Lead-Synth.
1	84	Chiff GM	Synthesizer	Lead-Synth.
1	85	Synthpipe GM	Synthesizer	Lead-Synth.
1	86	Solo Vox GM	Voices	Special
1	87	5th Saw Wave GM	Synthesizer	Lead-Synth.
1	88	Bass & Lead GM	Synthesizer	Lead-Synth.
1	89	Fantasy GM	Synthesizer	Pad-Synth.
1	90	Warm Pad GM	Synthesizer	Pad-Synth.
1	91	Score Pad GM	Synthesizer	Pad-Synth.
1	92	SynChoir Pad GM	Synthesizer	Pad-Synth.
1	93	Bowed Pad GM	Synthesizer	Pad-Synth.
1	94	Metal Pad GM	Synthesizer	Pad-Synth.
1	95	Halo Pad GM	Synthesizer	Pad-Synth.
1	96	Sweep Pad GM	Synthesizer	Pad-Synth.
1	97	Rain Pad GM	Synthesizer	Effect synth.
1	98	Soundtrack GM	Synthesizer	Effect synth.
1	99	Crystal Pad GM	Synthesizer	Effect synth.
1	100	Atmosphere GM	Synthesizer	Effect synth.
1	101	Brightness GM	Synthesizer	Effect synth.
1	102	Goblins GM	Synthesizer	Effect synth.
1	103	Echo Drops GM	Synthesizer	Effect synth.
1	104	Sci-fi Pad GM	Synthesizer	Effect synth.
1	105	Sitar GM	Strums	Ethnic
1	106	Banjo GM	Strums	Ethnic
1	107	Shamisen GM	Strums	Ethnic
1	108	Koto GM	Strums	Ethnic
1	109	Kalimba GM	Percussion & others	Chromatic
1	110	Bagpipe GM	Reeds	Bassoon / Oboe
1	111	Fiddle GM	Strings	Violin / Viola
1	112	Shannai GM	Strings	Special
1	113	Tinkle Bell GM	Percussion & others	Solo drum
1	114	Agogo Bell GM	Percussion & others	Solo drum
1	115	Steeldrum GM	Percussion & others	Solo drum
1	116	Woodblock GM	Percussion & others	Solo drum
1	117	Taiko Drum GM	Percussion & others	Solo drum
1	118	E Tom GM	Percussion & others	Solo drum
1	119	Synthe Drums GM	Percussion & others	Solo drum
1	120	ReverseCymbal GM	Percussion & others	Solo drum
1	121	Gt.Fret Noise GM	Synthesizer	Sound effects
1	122	Breath Noise GM	Synthesizer	Sound effects
1	123	Seashore GM	Synthesizer	Sound effects
1	124	Birds GM	Synthesizer	Sound effects
1	125	Telephone GM	Synthesizer	Sound effects
1	126	Helicopter GM	Synthesizer	Sound effects
1	127	Applause GM	Synthesizer	Sound effects
1	128	Gunshot GM	Synthesizer	Sound effects
Bank	Nr.	< Amadeus (GM2) >	Kategorie	Group
2	1	No Sound		
2	2	Piano Concert	Pianos	Upright piano
2	3	Rock Piano 1	Pianos	Upright piano

SEMPRA 2.0 UPGRADE - INSTALLATION AND PLAYING INSTRUCTIONS

2	4	2nd Honky	Pianos	Piano
2	5	E-Piano basic 1	Pianos	E-Piano
2	6	E-Piano soft FX	Pianos	E-Piano
2	7	Harpsichord 2	Pianos	Cembalo
2	8	Clavichord 2	Pianos	Cembalo
2	9	Celesta 2	Percussion & others	Chromatic
2	10	Lyra	Percussion & others	Chromatic
2	11	Toy-Bells	Percussion & others	Chromatic
2	12	Vibraph. mod. 1	Percussion & others	Chromatic
2	13	Marimba 2	Percussion & others	Chromatic
2	14	Xylophone 2	Percussion & others	Chromatic
2	15	Tubular Bell 2	Percussion & others	Solo drum
2	16	Dulcimer 1	Strums	Ethnic
2	17	Ham & Eggs Modul	Organs	Rotary
2	18	Basic B.&Perc FX	Organs	Rotary
2	19	Ham & Eggs Prc.	Organs	Rotary
2	20	Harmonium 1	Pipe organs	Combi small
2	21	Mundharm. 1	Accordions	Harmonica
2	22	Alpine Accordion	Accordions	Tremolo
2	23	Musette l'amour	Accordions	Tremolo
2	24	Accordion Master	Accordions	Tremolo
2	25	Nylon-Guitar 2	Strums	Unplugged
2	26	Nylon-Guitar 3	Strums	Unplugged
2	27	Nylon-Guit. sft	Strums	Unplugged
2	28	Clean Guitar 2	Strums	E-Guitar
2	29	Solo-E-Guit. sFX	Strums	E-Guitar
2	30	Deep Stack FX	Strums	Rock-Guitar
2	31	Lead E-Guit. sFX	Strums	Rock-Guitar
2	32	Dist.Fb.Git. fFX	Strums	Rock-Guitar
2	33	Acoustic Bass 2	Basses	Acoust. bass
2	34	Fingered Bass 2	Basses	El.bass
2	35	Picked Bass 2	Basses	El.bass
2	36	Fretless Bass 2	Basses	El.bass
2	37	Slap Bass 3	Basses	El.bass
2	38	Slap Bass 4	Basses	El.bass
2	39	Fat Synth Bass	Basses	Synthe bass
2	40	Double Synth Bs	Basses	Synthe bass
2	41	Solo-Violin	Strings	Violin / Viola
2	42	Violoncello	Strings	Cello / Bass
2	43	Solo-Cello	Strings	Cello / Bass
2	44	Contrabass 2	Strings	Cello / Bass
2	45	Tremolo Str. 2	Strings	Special
2	46	Pizzicato Str. 2	Strings	Special
2	47	Harp 2	Strums	Ethnic
2	48	Timpani 2	Percussion & others	Solo drum
2	49	Strings allegro	Strings	Orchestra hard
2	50	Strings & Cello	Strings	Combi
2	51	Strings & Pad	Strings	Combi
2	52	Synth Strings 3	Strings	Special
2	53	Fem. Choir	Voices	Choir
2	54	Gsp. Bgr. Choir	Voices	Choir
2	55	Silent Choir	Voices	Choir
2	56	Orchestra Hit 2	Strings	Special
2	57	Ballad Trumpet a	Brass	Trumpet
2	58	Trombone soft a	Brass	Trombone
2	59	Tuba	Brass	Tuba / Baritone
2	60	Muted Tr cl/open	Brass	Trumpet
2	61	Horn Sect. high	Brass	Horn
2	62	Brass Set 1	Brass	Combi
2	63	Brass Set 2	Brass	Combi
2	64	Mega Synth Brass	Brass	Combi
2	65	Sopran Sax 1	Reeds	Saxophone
2	66	Alto Sax 2 a	Reeds	Saxophone
2	67	Ten. Sax soft a	Reeds	Saxophone
2	68	Bariton Sax 2 a	Reeds	Saxophone
2	69	Oboe 1 a	Reeds	Bassoon / Oboe
2	70	English Horn 2 a	Reeds	Bassoon / Oboe
2	71	Bassoon 2 a	Reeds	Bassoon / Oboe

SEMPRA 2.0 UPGRADE - INSTALLATION AND PLAYING INSTRUCTIONS

2	72	Clarinet soft a	Reeds	Clarinet
2	73	Piccolo 2 a	Reeds	Flute
2	74	Jazz-Flute 1 a	Reeds	Flute
2	75	Recorder 2 a	Reeds	Flute
2	76	Highland Pan. a	Reeds	Flute
2	77	Spit Flute 1 dyn	Reeds	Flute
2	78	Jazz-Flute 2 a	Reeds	Flute
2	79	Whistlers	Voices	Solo
2	80	Ocarina 2 a	Reeds	Flute
2	81	Saw. Synth 1	Synthesizer	Lead-Synth.
2	82	Firesynth	Synthesizer	Lead-Synth.
2	83	5th Powersynth	Synthesizer	Lead-Synth.
2	84	Square Synth 1	Synthesizer	Lead-Synth.
2	85	Filrsynth Mod 1	Synthesizer	Lead-Synth.
2	86	Filrsnth 2	Synthesizer	Pad-Synth.
2	87	Filrsnth up-down	Synthesizer	Pad-Synth.
2	88	Mysticsynth 1	Synthesizer	Pad-Synth.
2	89	Mysticsynth 2	Synthesizer	Pad-Synth.
2	90	Utopiasynth 1	Synthesizer	Pad-Synth.
2	91	Utopiasynth 2	Synthesizer	Pad-Synth.
2	92	Synth sustainer	Synthesizer	Lead-Synth.
2	93	Futuresynth up	Synthesizer	Effect synth.
2	94	Futuresynth down	Synthesizer	Effect synth.
2	95	Multi Synth	Synthesizer	Lead-Synth.
2	96	D - Synth 55 fFX	Synthesizer	Lead-Synth.
2	97	D - Synth 65	Synthesizer	Lead-Synth.
2	98	D - Synth choir	Synthesizer	Pad-Synth.
2	99	Fantasy Synbells	Synthesizer	Lead-Synth.
2	100	Fantasy Synth 2	Synthesizer	Lead-Synth.
2	101	Fantasy Synt.fFX	Synthesizer	Lead-Synth.
2	102	Fantasy Synth 4	Synthesizer	Lead-Synth.
2	103	---		
2	104	---		
2	105	Zither 1	Strums	Ethnic
2	106	Banjo 2	Strums	Ethnic
2	107	Mandoline 1	Strums	Ethnic
2	108	Koto 2	Strums	Ethnic
2	109	---		
2	110	Bagpipes 2 dyn	Reeds	Bassoon / Oboe
2	111	---		
2	112	---		
2	113	Treebell 1	Percussion & others	Solo drum
2	114	---		
2	115	Steel Band 2	Percussion & others	Solo drum
2	116	---		
2	117	---		
2	118	---		
2	119	---		
2	120	Orch. Cymbal 1	Percussion & others	Solo drum
2	121	Publikum	Synthesizer	Sound effects
2	122	Typewriter	Synthesizer	Sound effects
2	123	Letter	Synthesizer	Sound effects
2	124	Church Bells	Synthesizer	Sound effects
2	125	Prost!	Synthesizer	Sound effects
2	126	Seashore	Synthesizer	Sound effects
2	127	Whistlers Eff.	Synthesizer	Sound effects
2	128	Pitchattack 1	Synthesizer	Effect synth.
Bank	Sound	<Amadeus (GM3)>	Category	Group
3	1	No Sound		
3	2	Piano Conc. soft	Pianos	Upright piano
3	3	Piano brilliant	Pianos	Upright piano
3	4	Oktav Piano	Pianos	Upright piano
3	5	E-Piano 4 tr.	Pianos	E-Piano
3	6	E-Piano south.FX	Pianos	E-Piano
3	7	Bass Harpsichord	Pianos	Cembalo
3	8	---		
3	9	Celesta 3	Percussion & others	Chromatic
3	10	Carillon	Percussion & others	Chromatic

SEMPRA 2.0 UPGRADE - INSTALLATION AND PLAYING INSTRUCTIONS

3	11	Movie bells	Percussion & others	Chromatic
3	12	Vibraphon trem.	Percussion & others	Chromatic
3	13	---		
3	14	---		
3	15	---		
3	16	---		
3	17	Tw. Organ Prc.FX	Organs	Rotary
3	18	Lower Organ 1 FX	Organs	Rotary
3	19	Tw. Organ FX	Organs	Rotary
3	20	Harmonium 2	Pipe organs	Combi small
3	21	Mundharm. 2	Accordions	Harmonica
3	22	Accordion Stud.	Accordions	Tremolo
3	23	Trad. Accordion	Accordions	Tremolo
3	24	Tango-Accord. 1	Accordions	Register
3	25	Folk-Guitar 1	Strums	Unplugged
3	26	Flamenco 1	Strums	Unplugged
3	27	Clean Git. FX	Strums	E-Guitar
3	28	12-String Guitar	Strums	Unplugged
3	29	Muted Guitar 2	Strums	E-Guitar
3	30	---		
3	31	---		
3	32	---		
3	33	Combibass Pd	Basses	Sustain bass
3	34	Orgelbass 1 Pd	Basses	Sustain bass
3	35	Orgelbass 2 Pd	Basses	Sustain bass
3	36	Bass Guitar 1 Pd	Basses	Sustain bass
3	37	Bass Guitar 2 Pd	Basses	Sustain bass
3	38	Bass Guitar 3 Pd	Basses	Sustain bass
3	39	Bass Guitar 4 Pd	Basses	Sustain bass
3	40	---		
3	41	Second Violin	Strings	Violin / Viola
3	42	Cello & Violin 1	Strings	Combi
3	43	---		
3	44	---		
3	45	---		
3	46	Pizzicato-Str. 3	Strings	Special
3	47	E-Harp 1	Strums	Ethnic
3	48	Timpani roll 1	Percussion & others	Solo drum
3	49	Real Strings	Strings	Orchestra hard
3	50	Cello-Viol-Str.	Strings	Combi
3	51	Marcato Str.	Strings	Orchestra hard
3	52	Str. Ens. & Timp	Strings	Combi
3	53	Morricone choir	Voices	Choir
3	54	Morric. ch. & So	Voices	Choi dynamic
3	55	Choir & Strings	Voices	Combi
3	56	Orchestra Hit 3	Strings	Special
3	57	Silver Trumpet a	Brass	Trumpet
3	58	Trombone slow a	Brass	Trombone
3	59	Horn 1 high	Brass	Horn
3	60	Muted Trump. 2 a	Brass	Trumpet
3	61	Cornet a	Brass	Trumpet
3	62	To. Brass Set	Brass	Combi
3	63	L.A. Brass 1	Brass	Combi
3	64	Brass Set 2 fall	Brass	Combi
3	65	Trombone sft.lv.	Brass	Trombone
3	66	Alto Sax 3 a	Reeds	Saxophone
3	67	Ballad Ten Sax a	Reeds	Saxophone
3	68	Rock Sax 1	Reeds	Saxophone
3	69	---		
3	70	English Horn 3 a	Reeds	Bassoon / Oboe
3	71	---		
3	72	Clarinet 3 a	Reeds	Clarinet
3	73	Sing&fl. 1	Reeds	Flute
3	74	---		
3	75	---		
3	76	Staccato Panfl.	Reeds	Flute
3	77	---		
3	78	---		

SEMPRA 2.0 UPGRADE - INSTALLATION AND PLAYING INSTRUCTIONS

3	79	---		
3	80	---		
3	81	Synth solo	Synthesizer	Lead-Synth.
3	82	Synth solo At	Synthesizer	Lead-Synth.
3	83	Fantasy Synth 1	Synthesizer	Lead-Synth.
3	84	Pop Corn Synth	Synthesizer	Lead-Synth.
3	85	Square Solosynth	Synthesizer	Lead-Synth.
3	86	---		
3	87	---		
3	88	---		
3	89	---		
3	90	Simplypad Synth	Synthesizer	Pad-Synth.
3	91	Breathpad	Synthesizer	Pad-Synth.
3	92	Warm breathpad 2	Synthesizer	Pad-Synth.
3	93	Pad & clicker	Synthesizer	Pad-Synth.
3	94	Space	Synthesizer	Pad-Synth.
3	95	Helens du choir	Voices	Choir
3	96	---		
3	97	---		
3	98	---		
3	99	---		
3	100	---		
3	101	---		
3	102	---		
3	103	---		
3	104	---		
3	105	---		
3	106	---		
3	107	Balalaika 1	Strums	Ethnic
3	108	---		
3	109	---		
3	110	---		
3	111	---		
3	112	---		
3	113	---		
3	114	---		
3	115	Steelband 3	Percussion & others	Solo drum
3	116	---		
3	117	---		
3	118	---		
3	119	---		
3	120	---		
3	121	---		
3	122	---		
3	123	Fall down click	Synthesizer	Effect synth.
3	124	Synth Ch. & clic	Synthesizer	Effect synth.
3	125	Baby	Synthesizer	Sound effects
3	126	Jodler	Synthesizer	Sound effects
3	127	Silvia über 19	Synthesizer	Sound effects
3	128	Pitchattack 2	Synthesizer	Effect synth.
Bank	Sound	<Amadeus (GM4)>	Category	Group
4	1	No Sound		
4	2	Piano Pub	Pianos	Upright piano
4	3	Power Pop-Piano	Pianos	Upright piano
4	4	R. Piano & Str.	Pianos	Combi
4	5	E-Piano 5 Pad	Pianos	Combi
4	6	Suitc. E-Pi. FX	Pianos	E-Piano
4	7	Harpsichord a	Pianos	Cembalo
4	8	---		
4	9	---		
4	10	---		
4	11	---		
4	12	---		
4	13	---		
4	14	---		
4	15	---		
4	16	---		
4	17	Ham & Eggs Cho.	Organs	Chorus / Vibrato

SEMPRA 2.0 UPGRADE - INSTALLATION AND PLAYING INSTRUCTIONS

4	18	Lower Organ 1 FX	Organs	Rotary
4	19	Drawbars 1 FX	Organs	Rotary
4	20	---		
4	21	Mundharm. sl/fst	Accordions	Harmonica
4	22	---		
4	23	---		
4	24	---		
4	25	Soft E-Gt pn sFX	Strums	E-Guitar
4	26	Hawaii-Guit. 1	Strums	E-Guitar
4	27	Blues warm fFX	Strums	E-Guitar
4	28	E-Guit. Stack 3	Strums	Rock-Guitar
4	29	Semi Ac Guitar 1	Strums	Unplugged
4	30	Lead E-Guitar 3	Strums	E-Guitar
4	31	---		
4	32	---		
4	33	---		
4	34	---		
4	35	Bass Guitar 2	Basses	El.bass
4	36	Bass Guitar 3	Basses	El.bass
4	37	---		
4	38	---		
4	39	Synth Bass D1+	Basses	Synthe bass
4	40	---		
4	41	Dark Str. & Viol	Strings	Combi
4	42	Cello/Viol/Str.	Strings	Combi
4	43	---		
4	44	---		
4	45	---		
4	46	Pizzicato-Str. 4	Strings	Special
4	47	---		
4	48	Timpani roll 2	Percussion & others	Solo drum
4	49	Str. Ens 2 -dyn.	Strings	Orchestra soft
4	50	Strings slow 2	Strings	Orchestra soft
4	51	Dark Strings 1	Strings	Orchestra hard
4	52	Roll-Viol-Str.	Strings	Combi
4	53	Du bab singers 1	Voices	Choir dynamic
4	54	Acap. singers 1	Voices	Choir dynamic
4	55	---		
4	56	---		
4	57	Trumpet Duo 1	Brass	Trumpet
4	58	Wah-Trombone	Brass	Trombone
4	59	Fluegelhorn 1 a	Brass	Horn
4	60	Muted Tr. closed	Brass	Trumpet
4	61	Effect Horns	Brass	Horn
4	62	Marchingband 1	Brass	Combi
4	63	Marchingband 2	Brass	Combi
4	64	Marchingband 3	Brass	Combi
4	65	---		
4	66	---		
4	67	Ballad Sax 1 a	Reeds	Saxophone
4	68	---		
4	69	Oboe & Strings 1	Reeds	Combi
4	70	---		
4	71	---		
4	72	---		
4	73	---		
4	74	---		
4	75	---		
4	76	---		
4	77	---		
4	78	---		
4	79	---		
4	80	---		
4	81	Perc. Synth 1	Synthesizer	Lead-Synth.
4	82	Perc. Synth Fltr	Synthesizer	Lead-Synth.
4	83	Lead fantasy sy.	Synthesizer	Lead-Synth.
4	84	Square pan-Synth	Synthesizer	Lead-Synth.
4	85	---		

SEMPRA 2.0 UPGRADE - INSTALLATION AND PLAYING INSTRUCTIONS

4	86	---		
4	87	---		
4	88	---		
4	89	---		
4	90	Simply Str.-Pad	Synthesizer	Pad-Synth.
4	91	Xanadu Pad	Synthesizer	Pad-Synth.
4	92	---		
4	93	---		
4	94	---		
4	95	---		
4	96	---		
4	97	---		
4	98	---		
4	99	---		
4	100	---		
4	101	---		
4	102	---		
4	103	---		
4	104	---		
4	105	---		
4	106	---		
4	107	Mandoline Orch 1	Strums	Ethnic
4	108	---		
4	109	---		
4	110	---		
4	111	---		
4	112	---		
4	113	---		
4	114	---		
4	115	---		
4	116	---		
4	117	---		
4	118	---		
4	119	---		
4	120	---		
4	121	---		
4	122	---		
4	123	---		
4	124	---		
4	125	---		
4	126	---		
4	127	---		
4	128	Slide 1	Synthesizer	Sound effects
Bank	Sound	<Amadeus (GM5)>	Category	Group
5	1	---		
5	2	Power Grand	Pianos	Grand piano
5	3	Power Gra. Brill	Pianos	Grand piano
5	4	Piano Conc. ped.	Pianos	Upright piano
5	5	E-Piano Glass	Pianos	E-Piano
5	6	E-Piano ballad	Pianos	E-Piano
5	7	Supertr. EP 1 AL	Pianos	E-Piano
5	8	Supertr. EP 2 AL	Pianos	E-Piano
5	9	E-Piano modern	Pianos	E-Piano
5	10	Piano & E-Piano	Pianos	Combi
5	11	Honky Grand	Pianos	Upright piano
5	12	Power Grand ped.	Pianos	Grand piano
5	13	Wide Grand ped.	Pianos	Grand piano
5	14	Soft Lounge Gra.	Pianos	Grand piano
5	15	Soft Lounge ped.	Pianos	Grand piano
5	16	Lounge Grand	Pianos	Grand piano
5	17	Drawbars 2 FX	Organs	Rotary
5	18	Drawbars 3 FX	Organs	Rotary
5	19	Full Bars 1 FX	Organs	Rotary
5	20	---		
5	21	---		
5	22	---		
5	23	---		
5	24	---		

SEMPRA 2.0 UPGRADE - INSTALLATION AND PLAYING INSTRUCTIONS

5	25	Warm Lead Guit.1	Strums	E-Guitar
5	26	Electric clean 1	Strums	E-Guitar
5	27	Vintage Amp. 1	Strums	E-Guitar
5	28	Vintage Electric	Strums	E-Guitar
5	29	Electric clean 2	Strums	E-Guitar
5	30	---		
5	31	---		
5	32	---		
5	33	---		
5	34	---		
5	35	Bass Guitar 4	El.bass	El.bass
5	36	Str.-Bass single	Strings	Cello / Bass
5	37	Str.-Ens. Bass	Strings	Cello / Bass
5	38	---		
5	39	---		
5	40	---		
5	41	---		
5	42	Cello & Violin 2	Strings	Combi
5	43	---		
5	44	---		
5	45	---		
5	46	---		
5	47	---		
5	48	Strings alleg. 2	Strings	Orchestra hard
5	49	Spiccato	Strings	Special
5	50	Strings slow 3	Strings	Orchestra soft
5	51	Okt. Strings 1	Strings	Orchestra soft
5	52	Str. Mellow dyn.	Strings	Orchestra soft
5	53	Fem & male Choir	Voices	Choir
5	54	Choir Cathedral	Voices	Choir
5	55	---		
5	56	Ballad Trumpet 2	Brass	Trumpet
5	57	Trumpet easy	Brass	Trumpet
5	58	Trombone p/f 1	Brass	Trombone
5	59	Tuba Solist	Brass	Tuba / Baritone
5	60	Muted Tr & Sax	Brass	Combi
5	61	Gladiator Horns	Brass	Horn
5	62	Sax & Clar.Set 1	Reeds	Combi
5	63	Sax & Clar.Set 2	Reeds	Combi
5	64	Sax & Clar.Set 3	Reeds	Combi
5	65	---		
5	66	---		
5	67	---		
5	68	---		
5	69	---		
5	70	---		
5	71	---		
5	72	---		
5	73	---		
5	74	---		
5	75	---		
5	76	---		
5	77	---		
5	78	---		
5	79	---		
5	80	---		
5	81	Perc. Synth Lay	Synthesizer	Lead-Synth.
5	82	Phase P. Synth 1	Synthesizer	Lead-Synth.
5	83	Another Fant.sFX	Synthesizer	Lead-Synth.
5	84	---		
5	85	---		
5	86	---		
5	87	---		
5	88	---		
5	89	---		
5	90	Warm breathpad 1	Synthesizer	Pad-Synth.
5	91	Xanadu Bell-Pad	Synthesizer	Pad-Synth.
5	92	---		

SEMPRA 2.0 UPGRADE - INSTALLATION AND PLAYING INSTRUCTIONS

5	93	---		
5	94	---		
5	95	---		
5	96	---		
5	97	---		
5	98	---		
5	99	---		
5	100	---		
5	101	---		
5	102	---		
5	103	---		
5	104	---		
5	105	---		
5	106	---		
5	107	Mandoline Orch 2	Strums	Ethnic
5	108	---		
5	109	---		
5	110	---		
5	111	---		
5	112	---		
5	113	---		
5	114	---		
5	115	---		
5	116	---		
5	117	---		
5	118	---		
5	119	---		
5	120	---		
5	121	---		
5	122	---		
5	123	---		
5	124	---		
5	125	---		
5	126	---		
5	127	---		
5	128	---		
Bank	Sound	<Amadeus (Organ1)>	Category	Group
6	1	Plenum	Pipe organs	Combi big
6	2	Mixtures Plen.	Pipe organs	Combi big
6	3	Prinzipsatz	Pipe organs	Combi small
6	4	Tutti	Pipe organs	Combi big
6	5	Mezzo Forte	Pipe organs	Combi small
6	6	Pedalsatz 1	Pipe organs	Combi small
6	7	Mixturen 4f.	Pipe organs	Principal
6	8	Mixturen 5f.	Pipe organs	Principal
6	9	Salizional 16	Pipe organs	Reeds
6	10	Trompete 8	Pipe organs	Reeds
6	11	Clarine 4	Pipe organs	Reeds
6	12	Trompete 16 & 8	Pipe organs	Reeds
6	13	Regal 16	Pipe organs	Reeds
6	14	Unda Maris 8	Pipe organs	Strings
6	15	Oboe 8	Pipe organs	Reeds
6	16	Unda M. & Gemsh.	Pipe organs	Strings
6	17	Open Bars 1 FX	Organs	Rotary
6	18	Open Bars 2 FX	Organs	Rotary
6	19	Prof. Bars 1 FX	Organs	Rotary
6	20	Shakespeare FX	Organs	Rotary
6	21	---		
6	22	---		
6	23	---		
6	24	---		
6	25	Nylon dyn. noise	Strums	Unplugged
6	26	Warm Chorus	Strums	E-Guitar
6	27	Chorus Solid 1	Strums	E-Guitar
6	28	Bright Chorus	Strums	E-Guitar
6	29	Warm Lead Vib.	Strums	E-Guitar
6	30	---		
6	31	---		

SEMPRA 2.0 UPGRADE - INSTALLATION AND PLAYING INSTRUCTIONS

6	32	---		
6	33	---		
6	34	---		
6	35	Bass Guitar 5	Basses	El.bass
6	36	Tower Combi.1 AL	Organs	Theatre combi
6	37	Tower Combi.2 AL	Organs	Theatre combi
6	38	Tower Combi.3 AL	Organs	Theatre combi
6	39	Tower Combi.4 AL	Organs	Theatre combi
6	40	Tower Combi.5 AL	Organs	Theatre combi
6	41	Tower Acc.1 AL	Organs	Theatre register
6	42	Tower Acc.2 AL	Organs	Theatre register
6	43	Tower Tib8 tr AL	Organs	Theatre register
6	44	Tower Acc.3tr AL	Organs	Theatre combi
6	45	Tower Pedal 1 AL	Organs	Theatre register
6	46	Tower Pedal 2 AL	Organs	Theatre register
6	47	Tower Crystgt AL	Organs	Theatre register
6	48	Theatre Perc1 AL	Organs	Theatre register
6	49	Str.Backgr.dark	Strings	Orchestra soft
6	50	Strings fast 1	Strings	Orchestra hard
6	51	Dance-Strings 1	Strings	Orchestra hard
6	52	---		
6	53	Duh singers	Voices	Choir
6	54	Bah singers	Voices	Choir
6	55	Ooh singers	Voices	Choir
6	56	Breath	Voices	Special
6	57	Dah singers	Voices	Choir
6	58	Solo Ooh	Voices	Solo
6	59	Solo Aah	Voices	Solo
6	60	Dahmm singers	Voices	Choir dynamic
6	61	Duhmm singers	Voices	Choir dynamic
6	62	Sax & Clar.Set 4	Reeds	Combi
6	63	Small Brass Set	Brass	Combi
6	64	Low Brass Ens.	Brass	Combi
6	65	---		
6	66	---		
6	67	---		
6	68	---		
6	69	---		
6	70	---		
6	71	---		
6	72	---		
6	73	---		
6	74	---		
6	75	---		
6	76	---		
6	77	---		
6	78	---		
6	79	---		
6	80	---		
6	81	Perc. Synth 2	Synthesizer	Lead-Synth.
6	82	---		
6	83	Fantasy Dolphin	Synthesizer	Pad-Synth.
6	84	---		
6	85	---		
6	86	---		
6	87	---		
6	88	---		
6	89	---		
6	90	16-8-5 1/3 sc DX	Organs	Chorus / Vibrato
6	91	16-8-4-2 sc DX	Organs	Chorus / Vibrato
6	92	16-8-5 1/3 P4 DX	Organs	Rotary
6	93	16-8-5 1/3P2 2/3 DX	Organs	Rotary
6	94	16-8-5 1/3 P4 2- DX	Organs	Rotary
6	95	Olds Jazz Perc 1 DX	Organs	Rotary
6	96	Perc. 4 dry	Organs	Drawbars
6	97	Perc. 2 2/3 dry	Organs	Drawbars
6	98	16 1bar DX	Organs	Rotary
6	99	8 1bar DX	Organs	Rotary

SEMPRA 2.0 UPGRADE - INSTALLATION AND PLAYING INSTRUCTIONS

6	100	4 1bar DX	Organs	Rotary
6	101	16-8 2bars DX	Organs	Rotary
6	102	16-4 2bars DX	Organs	Rotary
6	103	16-5 1/3 2bars DX	Organs	Rotary
6	104	16-8-5 1/3 3bars DX	Organs	Rotary
6	105	vr16-8-5 1/3-4 DX	Organs	Rotary
6	106	vr16-8-5 1/3-2-1 DX	Organs	Rotary
6	107	vr16-8-4-2 DX	Organs	Rotary
6	108	vr16-8-51-22-1 DX	Organs	Rotary
6	109	vr16-all-1 DX	Organs	Rotary
6	110	vr8-4-2 2/3-2 DX	Organs	Rotary
6	111	vr8-4-22/3-11/3 DX	Organs	Rotary
6	112	vr total mid DX	Organs	Rotary
6	113	vrc Olds 1 DX	Organs	Rotary
6	114	vrc Olds 1 perc DX	Organs	Rotary
6	115	vrc Olds 2 DX	Organs	Rotary
6	116	trc Olds 1 DX	Organs	Rotary
6	117	trc Olds 2 DX	Organs	Rotary
6	118	tsl vrc Olds 1 DX	Organs	Rotary
6	119	tsl vrc Olds 2 DX	Organs	Rotary
6	120	Bars 4-2 DX	Organs	Rotary
6	121	Bars 16-8-5-22/3 DX	Organs	Rotary
6	122	Bars 16----2 DX	Organs	Rotary
6	123	Bars 16-2 2/3 DX	Organs	Rotary
6	124	5 1/3 1bar DX	Organs	Rotary
6	125	---		
6	126	---		
6	127	---		
6	128	---		
Bank	Sound	<Amadeus (Organ2)>	Category	Group
7	1	Rohrflöte 8	Pipe organs	Flute
7	2	Rohrflöte 4	Pipe organs	Flute
7	3	Rohrflöte 2 2/3	Pipe organs	Flute
7	4	Rohrflöte 2	Pipe organs	Flute
7	5	Rohrflöte 1	Pipe organs	Flute
7	6	Rohrflöte 8-22/3	Pipe organs	Flute
7	7	Rohrfl.Tr 8-22/3	Pipe organs	Flute
7	8	Rohrflöte 8-4-2	Pipe organs	Flute
7	9	Rohrfl. Satz	Pipe organs	Flute
7	10	Prinzpal 8	Pipe organs	Principal
7	11	Prinzpal 4	Pipe organs	Principal
7	12	Prinz. 8 & Okt. 4	Pipe organs	Combi small
7	13	Gemshorn 8	Pipe organs	Strings
7	14	Vox Coelestis	Pipe organs	Strings
7	15	Salizional 8	Pipe organs	Strings
7	16	Subb.16 & Fl. 8	Pipe organs	Combi small
7	17	Prof. Bars 2 FX	Organs	Rotary
7	18	Whisper Bars FX	Organs	Rotary
7	19	Basic Bars FX	Organs	Rotary
7	20	FullBars cln2 FX	Organs	Rotary
7	21	Soft Bars 1 FX	Organs	Rotary
7	22	SustainBars 1 FX	Organs	Rotary
7	23	Complete Bars FX	Organs	Rotary
7	24	FullBars cln1 FX	Organs	Rotary
7	25	Organbars cl. FX	Organs	Rotary
7	26	Old Wheels sl/fs	Organs	Rotary
7	27	Old Wheels	Organs	Rotary
7	28	Old Wheels fast	Organs	Rotary
7	29	Old Wheels RotFX	Organs	Rotary
7	30	Basic B.&Perc FX	Organs	Rotary
7	31	Basic B. Per. cl	Organs	Drawbars
7	32	Lower Bars 1 FX	Organs	Rotary
7	33	Lower Org.2Rt.FX	Organs	Rotary
7	34	Bars 16-8 FX	Organs	Rotary
7	35	Bars 8 FX	Organs	Rotary
7	36	Bars 5 1/3 FX	Organs	Rotary
7	37	Bars 4 FX	Organs	Rotary
7	38	Bars 2 2/3 FX	Organs	Rotary

SEMPRA 2.0 UPGRADE - INSTALLATION AND PLAYING INSTRUCTIONS

7	39	Bars 2 FX	Organs	Rotary
7	40	Bars 1 3/5 FX	Organs	Rotary
7	41	Bars 1 1/3 FX	Organs	Rotary
7	42	Bars 1 FX	Organs	Rotary
7	43	Perc. 4	Organs	Drawbars
7	44	Perc. 2 2/3	Organs	Drawbars
7	45	Super sft.BarsFX	Organs	Rotary
7	46	Glassorgel	Organs	Drawbars
7	47	Keyclick	Organs	Drawbars
7	48	Perc. 5 1/3	Organs	Drawbars
7	49	Strings & Organ	Organs	Organ combi
7	50	Farf. 1973 FX	Organs	Rotary
7	51	---		
7	52	---		
7	53	---		
7	54	Ohh Choir	Choir	Choir
7	55	Trumpet 2	Brass	Trumpet
7	56	Trumpet 3	Brass	Trumpet
7	57	Soft Solo Trp. a	Brass	Trumpet
7	58	Trumpet 4 a	Brass	Trumpet
7	59	Trump.4 Duo >1 a	Brass	Trumpet
7	60	Brass 5 Grow!	Brass	Combi
7	61	Fanfare & Fall	Brass	Combi
7	62	Sax Section Ten.	Reeds	Saxophone
7	63	16-8-5 1/3 DX	Organs	Rotary
7	64	16-8-5 1/3-4 DX	Organs	Rotary
7	65	16-8-5 1/3-4-2-1 DX	Organs	Rotary
7	66	16-8-5 1/3-2-1 DX	Organs	Rotary
7	67	16-8-4-2 DX	Organs	Rotary
7	68	16-8-51/3-22/3-1 DX	Organs	Rotary
7	69	16-all-1 DX	Organs	Rotary
7	70	8-4-2 2/3-2 DX	Organs	Rotary
7	71	8-4-2 DX	Organs	Rotary
7	72	8-4-2 2/3-1 1/3 DX	Organs	Rotary
7	73	Total mid DX	Organs	Rotary
7	74	Total dirty mid DX	Organs	Rotary
7	75	Dark mid DX	Organs	Rotary
7	76	8-4 mid DX	Organs	Rotary
7	77	8-2 2/3 DX	Organs	Rotary
7	78	8-2 2/3 open DX	Organs	Rotary
7	79	5 1/3-1 3/5-1 DX	Organs	Rotary
7	80	5 1/3-1 3/5-11/3 DX	Organs	Rotary
7	81	5 1/3-2-1 3/5 DX	Organs	Rotary
7	82	4-2-1 DX	Organs	Rotary
7	83	Perc. 4 sc DX	Organs	Drawbars
7	84	Perc. 2 2/3 sc DX	Organs	Drawbars
7	85	Olds cl Perc 1 DX	Organs	Rotor
7	86	Olds cl Perc 2 DX	Organs	Rotor
7	87	Olds 1 chorus DX	Organs	Chorus / Vibrato
7	88	Olds 2 chorus DX	Organs	Chorus / Vibrato
7	89	Olds 3 chorus DX	Organs	Chorus / Vibrato
7	90	Olds 4 chorus DX	Organs	Chorus / Vibrato
7	91	Olds typ 2 DX	Organs	Rotary
7	92	Olds typ 2b DX	Organs	Rotary
7	93	Olds dirty 1 DX	Organs	Rotary
7	94	Olds dirty 2 DX	Organs	Rotary
7	95	Olds & Jazz Perc DX	Organs	Rotary
7	96	Olds & high Perc DX	Organs	Rotary
7	97	16-5 1/3 f. mind DX	Organs	Rotary
7	98	16-1 first mind DX	Organs	Rotary
7	99	Pull 10! bars DX	Organs	Rotary
7	100	Pull 7 bars DX	Organs	Rotary
7	101	Mixed gen. 1 DX	Organs	Rotary
7	102	Mixed gen. 2 DX	Organs	Rotary
7	103	Mixed gen. Perc DX	Organs	Rotary
7	104	16-8-5 short P2 DX	Organs	Rotary
7	105	v16-8-51/3 sust	Organs	Chorus / Vibrato
7	106	v8-4-2 sust	Organs	Chorus / Vibrato

SEMPRA 2.0 UPGRADE - INSTALLATION AND PLAYING INSTRUCTIONS

7	107	v16-8-4-2 sust	Organs	Chorus / Vibrato
7	108	v16-8-51/3-1sust	Organs	Chorus / Vibrato
7	109	d16-8-5 1/3	Organs	Drawbars
7	110	d16-8-51/3-4-2-1	Organs	Drawbars
7	111	d16-8-5 1/3-2-1	Organs	Drawbars
7	112	d16-8-4-2	Organs	Drawbars
7	113	d16-8-51/3-22/3-	Organs	Drawbars
7	114	d16-all-1	Organs	Drawbars
7	115	d8-4-2 2/3-2	Organs	Drawbars
7	116	d8-4-2	Organs	Drawbars
7	117	d8-4-2 2/3-1 1/3	Organs	Drawbars
7	118	d total mid	Organs	Drawbars
7	119	v16-8-5 1/3	Organs	Chorus / Vibrato
7	120	v16-8-5 1/3 P2	Organs	Chorus / Vibrato
7	121	v16-8-51/3-4-2-1	Organs	Chorus / Vibrato
7	122	v16-8-51/3-2-1	Organs	Chorus / Vibrato
7	123	v16-8-4-2	Organs	Chorus / Vibrato
7	124	v16-8-51/3-22/3-	Organs	Chorus / Vibrato
7	125	v16-all-1	Organs	Chorus / Vibrato
7	126	v8-4-2 2/3-2	Organs	Chorus / Vibrato
7	127	v8-4-2	Organs	Chorus / Vibrato
7	128	Bars 8 dry	Organs	Drawbars
Bank	Sound	<Sound4You>	Category	Group
26	1	Baby Grand soft	Pianos	Upright piano
26	2	Baby Grand med.	Pianos	Upright piano
26	3	Baby Grand hard	Pianos	Upright piano
26	4	Baby Grand Rock	Pianos	Upright piano
26	5	Dyn.Grand soft	Pianos	Grand piano
26	6	Dyn.Grand med.	Pianos	Grand piano
26	7	Dyn.Grand hard	Pianos	Grand piano
26	8	Dyn.Grand octave	Pianos	Grand piano
26	9	Rhodes Style	Pianos	E-Piano
26	10	Dyn.Rhodes soft	Pianos	E-Piano
26	11	Dyn.Rhodes med.	Pianos	E-Piano
26	12	Dyn.Rhodes hard	Pianos	E-Piano
26	13	E-Piano1 filt fx	Pianos	E-Piano
26	14	E-Piano Rock fx	Pianos	E-Piano
26	15	E-Piano modulat.	Pianos	E-Piano
26	16	E-Piano bright	Pianos	E-Piano
26	17	Classic Guit.sft	Strums	Unplugged
26	18	Classic Guit.rd.	Strums	Unplugged
26	19	Class.Guit.dyn.1	Strums	Unplugged
26	20	Span.Gt.dyn.1	Strums	Unplugged
26	21	Span.Gt.dyn.2	Strums	Unplugged
26	22	ConcGt.rd.soft	Strums	Unplugged
26	23	ConcGt.rd.med.	Strums	Unplugged
26	24	ConcGt.rd.hard	Strums	Unplugged
26	25	ConcGt.rd.dyn.1	Strums	Unplugged
26	26	ConcGt.rd.dyn.2	Strums	Unplugged
26	27	Conc.Git.dyn>1 1	Strums	Unplugged
26	28	Conc.Git.dyn>1 2	Strums	Unplugged
26	29	Class.Git.dyn+ 1	Strums	Unplugged
26	30	Class.Git.dyn+ 2	Strums	Unplugged
26	31	Class.Git.dyn+ 3	Strums	Unplugged
26	32	12-String Git.	Strums	Unplugged
26	33	Clean Strat. 1 +	Strums	E-Guitar
26	34	Muted Strat.dyn.	Strums	E-Guitar
26	35	Clean Strat.chor	Strums	E-Guitar
26	36	Tremolo Strat.+	Strums	E-Guitar
26	37	Shadow's Echo fx	Strums	E-Guitar
26	38	Tremolo Guit. fx	Strums	E-Guitar
26	39	Electric Blues	Strums	E-Guitar
26	40	Jango Jazz Guit.	Strums	E-Guitar
26	41	Jazz-Git.dyn.	Strums	E-Guitar
26	42	Warm E-Git.dyn.1	Strums	E-Guitar
26	43	E-Git.Chorus fx	Strums	E-Guitar
26	44	E-Git.Flanger fx	Strums	E-Guitar
26	45	E-Git.Distort.fx	Strums	Rock-Guitar

SEMPRA 2.0 UPGRADE - INSTALLATION AND PLAYING INSTRUCTIONS

26	46	Dist.Git.ster.fx	Strums	Rock-Guitar
26	47	Stereo-Strat. 1	Strums	E-Guitar
26	48	Stereo-Strat. 2	Strums	E-Guitar
26	49	Choir Ooh stereo	Voices	Choir
26	50	Choir Aah stereo	Voices	Choir
26	51	Choir Ooh/Aah st	Voices	Choir dynamic
26	52	Great Chr.stereo	Voices	Choir
26	53	Emu.Choir stereo	Voices	Special
26	54	MysticAngles mod	Voices	Special
26	55	Chr.Cathedr.mod1	Voices	Combi
26	56	Chr.Cathedr.mod2	Voices	Combi
26	57	Synthe Voice	Voices	Special
26	58	Synthe Choral	Voices	Special
26	59	Amadeus Choir	Voices	Combi
26	60	Str.& Timpani	Strings	Combi
26	61	Str.Marcato 1	Strings	Orchestra hard
26	62	Str.Marcato 2	Strings	Orchestra hard
26	63	Str.Broadway	Strings	Orchestra soft
26	64	Str.Orch.octave	Strings	Orchestra hard
26	65	Tremolo Violins	Strings	Special
26	66	Tremolo Violas	Strings	Special
26	67	Str.mod.Tremolo	Strings	Special
26	68	Strings Pad ster	Strings	Orchestra soft
26	69	Str.Background	Strings	Orchestra soft
26	70	Str.NewAge ster.	Strings	Orchestra soft
26	71	Str.bright&slow	Strings	Orchestra soft
26	72	Str.slow octave	Strings	Orchestra soft
26	73	Simple Lead ster	Synthesizer	Lead-Synth.
26	74	Soft Lead	Synthesizer	Lead-Synth.
26	75	Background Synth	Synthesizer	Pad-Synth.
26	76	Percussive Syn.1	Synthesizer	Lead-Synth.
26	77	Percussive Syn.2	Synthesizer	Lead-Synth.
26	78	Pulstar Lead CR	Synthesizer	Lead-Synth.
26	79	Vangelis CSfx CR	Synthesizer	Lead-Synth.
26	80	Fat Lead 1 ster.	Synthesizer	Lead-Synth.
26	81	Fat Lead 2 ster.	Synthesizer	Lead-Synth.
26	82	AxIF Lead mod.fx	Synthesizer	Lead-Synth.
26	83	AxIF PercSy.1 fx	Synthesizer	Lead-Synth.
26	84	AxIF BellSyn. 1	Synthesizer	Lead-Synth.
26	85	AxIF BellSyn. 2	Synthesizer	Lead-Synth.
26	86	Bell Synth. 3	Synthesizer	Lead-Synth.
26	87	Bilitis Synth. 1	Synthesizer	Lead-Synth.
26	88	Bilitis Synth. 2	Synthesizer	Lead-Synth.
26	89	Emu.Pad stereo	Synthesizer	Pad-Synth.
26	90	Emu.Clicker	Synthesizer	Effect synth.
26	91	Clear Pad mod.fx	Synthesizer	Pad-Synth.
26	92	Clear Pad mod.st	Synthesizer	Pad-Synth.
26	93	Clear Pad + Bell	Synthesizer	Pad-Synth.
26	94	Bell-Pad 1 fx	Synthesizer	Pad-Synth.
26	95	Sustain Pad mod.	Synthesizer	Pad-Synth.
26	96	Illusion	Synthesizer	Pad-Synth.
26	97	Space Pad 1	Synthesizer	Pad-Synth.
26	98	Space Pad 2 mod.	Synthesizer	Pad-Synth.
26	99	Filmscore	Synthesizer	Pad-Synth.
26	100	Trance	Synthesizer	Pad-Synth.
26	101	Utopia Bell 1 fx	Synthesizer	Effect synth.
26	102	Utopia Bell 2 fx	Synthesizer	Effect synth.
26	103	Utopia Bell 3 fx	Synthesizer	Effect synth.
26	104	SoftPad mod.Bell	Synthesizer	Pad-Synth.
26	105	Berts Bass +	Basses	El.bass
26	106	Berts PdBass	Basses	Sustain bass
26	107	Guit. PdBass 1	Basses	Sustain bass
26	108	Guit. PdBass 2	Basses	Sustain bass
26	109	AxIF Bass +	Basses	Synthe bass
26	110	MoogBass 1	Basses	Synthe bass
26	111	MoogBass 2 Pd.	Basses	Sustain bass
26	112	MoogBass 3 st	Basses	Synthe bass
26	113	Organ PdBass 1	Basses	Sustain bass

SEMPRA 2.0 UPGRADE - INSTALLATION AND PLAYING INSTRUCTIONS

26	114	Organ PdBass 2	Basses	Sustain bass
26	115	Glassorgan	Synthesizer	Sound effects
26	116	Whistler 1	Voices	Special
26	117	Whistler 2	Voices	Special
26	118	Harmonica +	Accordions	Harmonica
26	119	Classic Flute	Reeds	Flute
26	120	Classic Flute +	Reeds	Flute
26	121	Jazz Sopr.Sax +	Reeds	Saxophone
26	122	Jazz Alt Sax 1 +	Reeds	Saxophone
26	123	Jazz Alt Sax 2 +	Reeds	Saxophone
26	124	Jazz Ten.Sax +	Reeds	Saxophone
26	125	Berts Trumpet	Brass	Trumpet
26	126	Berts Trombone +	Brass	Trombone
26	127	Bass Tuba 1	Brass	Tuba / Baritone
26	128	Bass Tuba 2	Brass	Tuba / Baritone
Bank	Sound	<Amadeus art (AZ)>	Category	Group
27	1	Grand 1 bright	Pianos	Grand piano
27	2	Piano pure soft	Pianos	Upright piano
27	3	Grand 1 warm	Pianos	Grand piano
27	4	Mystic Piano	Pianos	Upright piano
27	5	E-Piano road	Pianos	E-Piano
27	6	E-Piano stage	Pianos	E-Piano
27	7	Clavicross	Pianos	Cembalo
27	8	Clavichord a	Pianos	Cembalo
27	9	Funkyclavi	Pianos	Cembalo
27	10	Short Saw 1	Synthesizer	Lead-Synth.
27	11	Short Saw 2	Synthesizer	Lead-Synth.
27	12	Jean M.	Synthesizer	Lead-Synth.
27	13	Square short	Synthesizer	Lead-Synth.
27	14	Wah-Perc.Synth	Synthesizer	Lead-Synth.
27	15	Soft Synthe	Synthesizer	Lead-Synth.
27	16	Lead Synthe	Synthesizer	Lead-Synth.
27	17	Echo Wah Mod.	Synthesizer	Lead-Synth.
27	18	Echo Square Md	Synthesizer	Lead-Synth.
27	19	Ethn.BellSyn.	Synthesizer	Lead-Synth.
27	20	Syntharmonium	Synthesizer	Lead-Synth.
27	21	Mundharm.st.lv.a	Accordions	Harmonica
27	22	Mundharm.sl.lv.a	Accordions	Harmonica
27	23	Mundharm.sf.lv.a	Accordions	Harmonica
27	24	Mundharm.fs.lv.a	Accordions	Harmonica
27	25	Git.Nyl.legato	Strums	Unplugged
27	26	Multigit.dyn 1	Strums	Unplugged
27	27	Multigit.dyn 2	Strums	Unplugged
27	28	Multigit.>1 high	Strums	Unplugged
27	29	Countrygt.dyn 1	Strums	Unplugged
27	30	Countrygt.dyn 2	Strums	Unplugged
27	31	Ukulele	Strums	Unplugged
27	32	Nyl.Git. dyn.	Strums	Unplugged
27	33	6-Str.Gt. dyn.	Strums	Unplugged
27	34	Nylon.Live 3 a	Strums	Unplugged
27	35	Flamenco dyn.1	Strums	Unplugged
27	36	Multigit.dyn. 3	Strums	Unplugged
27	37	Multigit.dyn. 4	Strums	Unplugged
27	38	Multigit.>1 low	Strums	Unplugged
27	39	Multigit.>2 low	Strums	Unplugged
27	40	Multigit.>3 low	Strums	Unplugged
27	41	Strat.Gt. chorus	Strums	E-Guitar
27	42	Hawaii Gt.leg.	Strums	E-Guitar
27	43	Cello legato	Strings	Cello / Bass
27	44	Orch.Roll =1	Percussion & others	Solo drum
27	45	Pizzicato velo	Strings	Special
27	46	Pizz<>str velo	Strings	Special
27	47	Harp pad	Strums	Ethnic
27	48	Strings sust.	Strings	Orchestra soft
27	49	Strings cl.fs.	Strings	Orchestra hard
27	50	Strgs.classico	Strings	Orchestra hard
27	51	Strings & Flute	Strings	Combi
27	52	Strings & Horns	Strings	Combi

SEMPRA 2.0 UPGRADE - INSTALLATION AND PLAYING INSTRUCTIONS

27	53	Str.romantic 2	Strings	Orchestra soft
27	54	Susp.Strings	Strings	Special
27	55	Strings & Oboe	Strings	Combi
27	56	Symphony	Strings	Combi
27	57	Trump.1 leg. at.	Brass	Trumpet
27	58	Sup.soft Tromb.a	Brass	Trombone
27	59	Cornet leg. at.	Brass	Trumpet
27	60	Muted Trp. at.	Brass	Trumpet
27	61	Horn Section 2	Brass	Horn
27	62	Horn S. Mod. at.	Brass	Horn
27	63	L.A. Brass 2	Brass	Combi
27	64	Brass Set high	Brass	Combi
27	65	Sopr. Sax 2 lg.at	Reeds	Saxophone
27	66	AltSax 1 lg. at.	Reeds	Saxophone
27	67	Ten. Sax smooth	Reeds	Saxophone
27	68	AltSax1 lg pitch	Reeds	Saxophone
27	69	Sopr. Sax 2 pit.	Reeds	Saxophone
27	70	SoftSax lg. at.	Reeds	Saxophone
27	71	Oboe 2 a	Reeds	Bassoon / Oboe
27	72	Engl. Horn pit.	Reeds	Bassoon / Oboe
27	73	Spit Flute 1	Reeds	Flute
27	74	Glasorgan	Synthesizer	Sound effects
27	75	Recorder 2 pit.	Reeds	Flute
27	76	Pan dark lg. at.	Reeds	Flute
27	77	Pan Fl. lg. at.	Reeds	Flute
27	78	Pan 3 pit.	Reeds	Flute
27	79	Wooden Pipe	Reeds	Flute
27	80	Cambridge Bus	Accordions	Combi
27	81	Dyn. resofun	Synthesizer	Lead-Synth.
27	82	Tecc'n reso	Synthesizer	Lead-Synth.
27	83	Crazy prc.Sy sFX	Synthesizer	Effect synth.
27	84	Crazy bell.Synth	Synthesizer	Effect synth.
27	85	Crazy 5bellsynth	Synthesizer	Effect synth.
27	86	New Age Summer	Synthesizer	Pad-Synth.
27	87	New Age Volcan	Synthesizer	Pad-Synth.
27	88	New Age Ocean	Synthesizer	Pad-Synth.
27	89	New Age Spring	Synthesizer	Pad-Synth.
27	90	Chill out pad	Synthesizer	Pad-Synth.
27	91	Polar night pad	Synthesizer	Pad-Synth.
27	92	Harp chill-pad	Synthesizer	Pad-Synth.
27	93	Himalaya pipe	Reeds	Combi
27	94	Fairpad 1	Synthesizer	Pad-Synth.
27	95	Fairpad 2	Synthesizer	Pad-Synth.
27	96	Ethnic Pad	Synthesizer	Pad-Synth.
27	97	JazzTrp. lg. at.	Brass	Trumpet
27	98	JazzTrp. switch	Brass	Trumpet
27	99	Cornet 2 pit.	Brass	Trumpet
27	100	OpenTrp. lg.at.	Brass	Trumpet
27	101	Monday Choir	Voices	Choir
27	102	Bert's Singers	Voices	Choir
27	103	Starlight Ch.	Voices	Combi
27	104	Sinfonia Ch.	Voices	Combi
27	105	Coolhorn	Brass	Horn
27	106	Cooltrombone	Brass	Trombone
27	107	Cooltrumpet	Brass	Trumpet
27	108	Alpert Tromb. a	Brass	Trombone
27	109	Alpert Trump.1	Brass	Trumpet
27	110	Alpert Trump.2	Brass	Trumpet
27	111	DuoTrumpet >1	Brass	Trumpet
27	112	Moravian Brass	Brass	Combi
27	113	Dulcimer 2	Strums	Ethnic
27	114	Bouzuki art	Strums	Ethnic
27	115	Country Clean	Strums	E-Guitar
27	116	Pedalsteel	Strums	E-Guitar
27	117	Pedalsteel lv. a	Strums	E-Guitar
27	118	Blue Hawaii Gt	Strums	E-Guitar
27	119	Tremolo E-Git.	Strums	E-Guitar
27	120	Clean E-Guitar	Strums	E-Guitar

27	121	Git.Nse. 1st 1	Strums	Unplugged
27	122	Water	Synthesizer	Sound effects
27	123	Crime	Synthesizer	Sound effects
27	124	Orch.Perc.	Percussion & others	Solo drum
27	125	Melod.Tom	Percussion & others	Solo drum
27	126	Melod.Tom 808	Percussion & others	Solo drum
27	127	Git.Noise rnd.	Strums	Unplugged
27	128	Git.Nse.rnd.on	Strums	Unplugged
Bank	Sound	<Amadeus art (MB)>	Category	Group
28	1	Old Lounge 1 a	Pianos	Grand piano
28	2	Rock Piano 1 a	Pianos	Upright piano
28	3	Rock Piano 2 a	Pianos	Upright piano
28	4	Rock Piano 3 a	Pianos	Upright piano
28	5	E-Piano 1 a	Pianos	E-Piano
28	6	E-Piano 2 a	Pianos	E-Piano
28	7	E-Piano 3 a	Pianos	E-Piano
28	8	Cembalo a	Pianos	Cembalo
28	9	Handbell1 rep a	Percussion & others	Solo drum
28	10	Handbell2 rep a	Percussion & others	Solo drum
28	11	Spieluhr stac a	Percussion & others	Chromatic
28	12	Jazz Vibe 1 a	Percussion & others	Chromatic
28	13	Mandoline a	Strums	Ethnic
28	14	Balalaika a	Strums	Ethnic
28	15	Akk.Glaheh a	Accordions	Tremolo
28	16	Akk.Avsenik a	Accordions	Tremolo
28	17	Bandoneon 1 a	Accordions	Tremolo
28	18	Bandoneon 2 a	Accordions	Tremolo
28	19	Musette-Akk.1 a	Accordions	Tremolo
28	20	Std-Akkord.1 a	Accordions	Tremolo
28	21	Std-Akkord.2 a	Accordions	Tremolo
28	22	Akk.ital.1 a	Accordions	Tremolo
28	23	Akk.soft 1 a	Accordions	Tremolo
28	24	Akk.Steieri. a	Accordions	Tremolo
28	25	Nylon-Gt.1 lv a	Strums	Unplugged
28	26	Flamenco 1 a	Strums	Unplugged
28	27	Clean Jazz a	Strums	E-Guitar
28	28	Clean Guit.1 a	Strums	E-Guitar
28	29	60th Clean lv a	Strums	E-Guitar
28	30	60th Jazz Gt a	Strums	E-Guitar
28	31	60th Hawaii a	Strums	E-Guitar
28	32	Concert Gt.1 a	Strums	Unplugged
28	33	Bass Guitar 1 a	Bässe	El.bass
28	34	Bass Guitar 2 a	Bässe	El.bass
28	35	Nylon.Live 1 a	Strums	Unplugged
28	36	Nylon.Live 2 a	Strums	Unplugged
28	37	AcoustGt 1 lv a	Strums	Unplugged
28	38	Ac.-Gt.-Noise a	Strums	Unplugged
28	39	Distortion a	Strums	Rock-Guitar
28	40	Mtd. Distort. a	Strums	Rock-Guitar
28	41	Violin 2 a	Strings	Violin / Viola
28	42	Viola 2 a	Strings	Violin / Viola
28	43	Cello 2 a	Strings	Cello / Bass
28	44	Cello 2 dyn. a	Strings	Cello / Bass
28	45	Marcato Str.1 a	Strings	Orchestra hard
28	46	Marcato Str.2 a	Strings	Orchestra hard
28	47	Ethnic Harp 1 a	Strums	Ethnic
28	48	SynfonicStr.1 a	Strings	Orchestra hard
28	49	Strings dyn.1 a	Strings	Orchestra hard
28	50	Mellow Str.3 a	Strings	Orchestra soft
28	51	StrgQuart 1 a	Strings	Combi
28	52	StrgQuart 2 a	Strings	Combi
28	53	Strg-Orch. 1 a	Strings	Orchestra hard
28	54	Strg-Orch. 2 a	Strings	Orchestra hard
28	55	Mellow+Vln.1 a	Strings	Combi
28	56	Strg.+Vln. 1 a	Strings	Combi
28	57	Trumpet dyn. a	Brass	Trumpet
28	58	Trombone 1 lv. a	Brass	Trombone
28	59	Trombone 2 lv. a	Brass	Trombone

SEMPRA 2.0 UPGRADE - INSTALLATION AND PLAYING INSTRUCTIONS

28	60	Muted Trump.1 a	Brass	Trumpet
28	61	Brass 1 a	Brass	Combi
28	62	Brass 2 a	Brass	Combi
28	63	Brass 3 dyn. a	Brass	Combi
28	64	Brass 4 Touch! a	Brass	Combi
28	65	Alto Sax 1 lv a	Reeds	Saxophone
28	66	Alto Sax 2 lv a	Reeds	Saxophone
28	67	Tenor Sax1 lv a	Reeds	Saxophone
28	68	Rock Sax 1 lv a	Reeds	Saxophone
28	69	Sax legato 1 a	Reeds	Saxophone
28	70	Sax legato 2 a	Reeds	Saxophone
28	71	Clarinet leg. a	Reeds	Clarinet
28	72	Clarinet 1 lv a	Reeds	Clarinet
28	73	Flute 1 a	Reeds	Flute
28	74	Jazz-Flute 1 a	Reeds	Flute
28	75	Pipe 1 a	Reeds	Flute
28	76	Pipe 2 dyn. a	Reeds	Flute
28	77	Pipe 3 dyn. a	Reeds	Flute
28	78	Indian Pipe a	Reeds	Flute
28	79	Pipe 1 switch a	Reeds	Flute
28	80	Spit Pipe 1 a	Reeds	Flute
28	81	Phaser 1 a	Synthesizer	Lead-Synth.
28	82	Solo Synth 1 a	Synthesizer	Lead-Synth.
28	83	Solo Synth 2 a	Synthesizer	Lead-Synth.
28	84	Andante 1 a	Synthesizer	Pad-Synth.
28	85	Andante 2 a	Voices	Special
28	86	Flipper 1 a	Synthesizer	Pad-Synth.
28	87	Flipper 2 a	Synthesizer	Pad-Synth.
28	88	Flipper 3 a	Synthesizer	Pad-Synth.
28	89	Mellow Str.1 a	Strings	Orchestra soft
28	90	Mellow Str.2 a	Strings	Orchestra soft
28	91	Violin soft 1 a	Strings	Violin / Viola
28	92	Violin soft 2 a	Strings	Violin / Viola
28	93	Cello 1 soft a	Strings	Cello / Bass
28	94	Cello 1 dyn. a	Strings	Cello / Bass
28	95	Violin 1 leg. a	Strings	Violin / Viola
28	96	Violin 2 leg. a	Strings	Violin / Viola
28	97	Tromb./Brass a	Brass	Combi
28	98	Sax/Clarinet a	Reeds	Combi
28	99	Clar./Trp. lv a	Reeds	Combi
28	100	Trp./Clarinet a	Brass	Combi
28	101	Chor+Solo 1 a	Voices	Choir
28	102	Chor+Solo 2 a	Voices	Choir
28	103	Akzent Chor 1 a	Voices	Choir dynamic
28	104	Akzent Chor 2 a	Voices	Choir dynamic
28	105	Zither 1 a	Strums	Ethnic
28	106	Zither 2 a	Strums	Ethnic
28	107	Hackbrett 1 a	Strums	Ethnic
28	108	Hackbrett 2 a	Strums	Ethnic
28	109	StrumsEns.1 a	Strums	Ethnic
28	110	Violin dyn.1 a	Strings	Violin / Viola
28	111	Cello/Vln/Str a	Strings	Special
28	112	Vln/Cello/Str a	Strings	Special
28	113	Buzouki 1 a	Strums	Ethnic
28	114	Buzouki 2 a	Strums	Ethnic
28	115	60th Jazz 1 a	Strums	E-Guitar
28	116	60th Jazz Chr. a	Strums	E-Guitar
28	117	60th Jazz 2 a	Strums	E-Guitar
28	118	60thJazz2 dyn a	Strums	E-Guitar
28	119	60th Jazz 3 a	Strums	E-Guitar
28	120	Ac.Gt.Noise 2 a	Strums	Unplugged
28	121	Git.Nse.1st 2 a	Synthesizer	Sound effects
28	122	OrganPatch 1 a	Organs	Drawbars
28	123	Weather a	Synthesizer	Sound effects
28	124	BirdsBirds... a	Synthesizer	Sound effects
28	125	Party a	Synthesizer	Sound effects
28	126	Bell 1 a	Percussion & others	Solo drum
28	127	Bell repeat 1 a	Percussion & others	Solo drum

SEMPRA 2.0 UPGRADE - INSTALLATION AND PLAYING INSTRUCTIONS

28	128	Effect Set 1 a	Synthesizer	Sound effects
Bank	Sound	<Amadeus art (DL)>	Category	Group
29	1	- - -		
29	2	Shaku Flute	Reeds	Flute
29	3	Shaku Fl. pit.	Reeds	Flute
29	4	Multig. Flamenco	Strums	Unplugged
29	5	Brill. Tr. pit.V	Brass	Trumpet
29	6	Solo Trumpet Vi.	Brass	Trumpet
29	7	Solo Tr. mut.Vi.	Brass	Trumpet
29	8	Solo Tr. pit.Vi.	Brass	Trumpet
29	9	Solo Horn low	Brass	Horn
29	10	Horns	Brass	Horn
29	11	Horn slow att.	Brass	Horn
29	12	Alto Sax Set 1	Reeds	Saxophone
29	13	Alto Sax Set 2	Reeds	Saxophone
29	14	Midnight Ten.Sax	Reeds	Saxophone
29	15	E-Piano soft 1	Pianos	E-Piano
29	16	E-Piano soft 2	Pianos	E-Piano
29	17	E-Piano solid	Pianos	E-Piano
29	18	E-Piano vintage	Pianos	E-Piano
29	19	60th Strat sFX	Strums	E-Guitar
29	20	Blues warm fFX	Strums	E-Guitar
29	21	Nylon G. play 4	Strums	Unplugged
29	22	Nylon rand.slide	Strums	Unplugged
29	23	Multig. Flamenco	Strums	Unplugged
29	24	Single Strat fFX	Strums	E-Guitar
29	25	Kings Strat 3sFX	Strums	E-Guitar
29	26	Disto. Guit. fFX	Strums	Rock-Guitar
29	27	Semi Ac Guit.sFX	Strums	E-Guitar
29	28	60th mute sFX	Strums	E-Guitar
29	29	SlideNyl 1 r.eff	Strums	Unplugged
29	30	Pop Dist. sFX	Strums	Rock-Guitar
29	31	Chorus Guit. sFX	Strums	E-Guitar
29	32	Stereo Strat fFX	Strums	E-Guitar
29	33	Crunch Guit. sFX	Strums	Rock-Guitar
29	34	Warm cl Guit fFX	Strums	E-Guitar
29	35	Carlos guit. sFX	Strums	Rock-Guitar
29	36	SlideFolk r.noi.	Strums	Unplugged
29	37	Accordion Jazz	Accordions	Tremolo
29	38	Master Accordion	Accordions	Tremolo
29	39	Tango Acc. espan	Accordions	Tremolo
29	40	Accordion Study	Accordions	Tremolo
29	41	Italy Acc. 3-Ch	Accordions	Tremolo
29	42	Italy Acc. high	Accordions	Tremolo
29	43	French Musette	Accordions	Tremolo
29	44	Accordion 3-ch.	Accordions	Tremolo
29	45	Stringbass Ens.	Strings	Special
29	46	Orch.Roll & Bass	Strings	Combi
29	47	Arco Basses	Strings	Special
29	48	Dark Str. Viol.	Strings	Orchestra hard
29	49	Barock	Strings	Orchestra hard
29	50	Strings octave	Strings	Orchestra hard
29	51	Ensemble Cl. 1	Strings	Orchestra soft
29	52	Real Str. slow	Strings	Orchestra soft
29	53	Studio Strings	Strings	Orchestra soft
29	54	Rich Pad-Strings	Strings	Orchestra soft
29	55	Dark adagio Str.	Strings	Orchestra soft
29	56	Violins for NL	Strings	Orchestra hard
29	57	Violins Strauss	Strings	Orchestra hard
29	58	Modern Strings	Strings	Special
29	59	Juppi's Syn. fFX	Synthesizer	Lead-Synth.
29	60	Fltr. up-dwn sFX	Synthesizer	Effect synth.
29	61	P-Syn up-dwn sFX	Synthesizer	Effect synth.
29	62	Perc. Filt 2 sFX	Synthesizer	Effect synth.
29	63	Syn pandelay fFX	Synthesizer	Effect synth.
29	64	Perc. SynLay sFX	Synthesizer	Effect synth.
29	65	Firesynth 2 sFX	Synthesizer	Pad-Synth.
29	66	Pad & P fant.sFX	Synthesizer	Pad-Synth.

SEMPRA 2.0 UPGRADE - INSTALLATION AND PLAYING INSTRUCTIONS

29	67	Sy Lead ping fFX	Synthesizer	Lead-Synth.
29	68	Pad & Perc fant.	Synthesizer	Combi
29	69	Fantasy raise me	Synthesizer	Lead-Synth.
29	70	Harp att. miami	Strums	Ethnic
29	71	Harp att.	Strums	Ethnic
29	72	Fantasy S. 1 fFX	Synthesizer	Lead-Synth.
29	73	Fantasy Flip fFX	Synthesizer	Lead-Synth.
29	74	Pad Summer fFX	Synthesizer	Pad-Synth.
29	75	Synth. Stack FX	Synthesizer	Lead-Synth.
29	76	---		
29	77	---		
29	78	---		
29	79	---		
29	80	---		
29	81	Org. R.&Dist. FX	Organs	Rotary
29	82	Trad. Organ FX	Organs	Rotary
29	83	Trad. Org. 2R-FX	Organs	Rotary
29	84	Olds Jazz Prc FX	Organs	Rotary
29	85	Cl. Org. 4-P FX	Organs	Rotary
29	86	Shakesp. soft FX	Organs	Rotary
29	87	Soft Bars FX	Organs	Rotary
29	88	Wheels sl/fs FX	Organs	Rotary
29	89	Dream Bars FX	Organs	Rotary
29	90	Dream Bars 2R-FX	Organs	Rotary
29	91	Basic Organ FX	Organs	Rotary
29	92	Basic Org. 2R-FX	Organs	Rotary
29	93	---		
29	94	---		
29	95	---		
29	96	---		
29	97	---		
29	98	---		
29	99	---		
29	100	---		
29	101	Gloria in exc.	Voices	Special
29	102	Kyrie	Voices	Special
29	103	Halleluja	Voices	Special
29	104	Amen	Voices	Special
29	105	---		
29	106	---		
29	107	---		
29	108	---		
29	109	---		
29	110	---		
29	111	---		
29	112	---		
29	113	---		
29	114	---		
29	115	---		
29	116	---		
29	117	---		
29	118	---		
29	119	---		
29	120	---		
29	121	---		
29	122	---		
29	123	---		
29	124	---		
29	125	Slide F. 12 r.no	Strums	Unplugged
29	126	Slide Folk 12-S	Strums	Unplugged
29	127	---		
29	128	---		
Bank	Sound	<Amadeus (ACC1)>	Category	Group
111	1	Piano 1 medi. AC	Pianos	Upright piano
111	2	Piano 2 soft AC	Pianos	Upright piano
111	3	Piano 3 AC	Pianos	Upright piano
111	4	Piano uni. AC	Pianos	Upright piano
111	5	E-Piano 1 AC	Pianos	E-Piano

111	6	E-Piano 2 AC	Pianos	E-Piano
111	7	E-Piano Pad AC	Pianos	E-Piano
111	8	EP+PopGrand AC	Pianos	E-Piano
111	9	E-P. PowerGrand	Pianos	E-Piano
111	10	E-P.classic soft	Pianos	E-Piano
111	11	---		
111	12	Vibraphon AC	Percussion & others	Chromatic
111	13	Marimba AC	Percussion & others	Chromatic
111	14	Xylophone AC	Percussion & others	Chromatic
111	15	---		
111	16	---		
111	17	Organ old ch. AC	Organs	Chorus / Vibrato
111	18	Organ old Prc AC	Organs	Chorus / Vibrato
111	19	Organ Sin Prc AC	Organs	Chorus / Vibrato
111	20	Organ slow r. AC	Organs	Rotary
111	21	Organ fast r. AC	Organs	Rotary
111	22	Accordion 1 AC	Accordions	Tremolo
111	23	Harmonica AC	Accordions	Harmonica
111	24	Alpine Acc. 1 AC	Accordions	Tremolo
111	25	Acoust.Guit.1aAC	Strums	Unplugged
111	26	Ovation Gt.1 aAC	Strums	Unplugged
111	27	Sft.Jazz Gt.1aAC	Strums	E-Guitar
111	28	Chor.Jz.Gt.1 AC	Strums	E-Guitar
111	29	Combo Guitar aAC	Strums	Unplugged
111	30	Dynamic Rock AC	Strums	Rock-Guitar
111	31	Dynamic Blues AC	Strums	E-Guitar
111	32	Nylon St.Git.aAC	Strums	Unplugged
111	33	Upright Bs. 1 AC	Basses	Acoust. bass
111	34	Fingered Bs.1 AC	Basses	El.bass
111	35	Picked Bass 1 AC	Basses	El.bass
111	36	Organ Bass p1 AC	Basses	Sustain bass
111	37	Fingered B.dp.AC	Basses	El.bass
111	38	Fingered Bs 2 AC	Basses	El.bass
111	39	Fingered Bs 3 AC	Basses	El.bass
111	40	Acoustic Bass AC	Basses	Acoust. bass
111	41	Violin 1 AC	Strings	Violin / Viola
111	42	---		
111	43	---	Strings	Orchestra soft
111	44	Str.liv.stacc AC	Strings	Orchestra hard
111	45	Spiccato AC	Strings	Special
111	46	Str.liv.alleg AC	Strings	Orchestra hard
111	47	Str.Ens. prc.AC	Strings	Orchestra soft
111	48	Str. allegro AC	Strings	Orchestra hard
111	49	Strings fast 1	Strings	Orchestra hard
111	50	Pad Strg. 1 AC	Strings	Orchestra soft
111	51	Strings Ens.1 AC	Strings	Orchestra soft
111	52	Strings real AC	Strings	Orchestra soft
111	53	Ooh-Choir 1 AC	Voices	Choir
111	54	Ooh-Choir 2 AC	Voices	Choir
111	55	Trumpet soft AC	Brass	Trumpet
111	56	Tuba AC	Brass	Tuba / Baritone
111	57	Trumpet 1 AC	Brass	Trumpet
111	58	Trombone 1 AC	Brass	Trombone
111	59	Bariton 1 AC	Brass	Tuba / Baritone
111	60	Small Br.+sax AC	Brass	Combi
111	61	Brass Sect.1 AC	Brass	Combi
111	62	Brass Sect.2 AC	Brass	Combi
111	63	Soft Brass 1 AC	Brass	Combi
111	64	Brassensemble AC	Brass	Combi
111	65	Reed sect. 1 AC	Reeds	Combi
111	66	Alto Sax 1 AC	Reeds	Saxophone
111	67	Alto Sax 2 AC	Reeds	Saxophone
111	68	Ten Sax AC	Reeds	Saxophone
111	69	Solo Trumpet AC	Brass	Trumpet
111	70	Bariton combi AC	Basses	Acoust. bass
111	71	Brass 2 AC	Brass	Combi
111	72	Clarinet 1 AC	Reeds	Clarinet
111	73	Piccolo 1 AC	Reeds	Flute

SEMPRA 2.0 UPGRADE - INSTALLATION AND PLAYING INSTRUCTIONS

111	74	Jazz-Flute AC	Reeds	Flute
111	75	Piccolo 2 AC	Reeds	Flute
111	76	Duo Fat Lead	Synthesizer	Lead-Synth.
111	77	Saw. Synth.BPas1	Synthesizer	Lead-Synth.
111	78	Fantasy EP bell	Synthesizer	Pad-Synth.
111	79	Fantasy pd+pipes	Synthesizer	Pad-Synth.
111	80	Saw. Synth. AC	Synthesizer	Lead-Synth.
111	81	Phase Moog 1 AC	Synthesizer	Lead-Synth.
111	82	Fat Lead 1 AC	Synthesizer	Lead-Synth.
111	83	Whou-Synth 1 AC	Synthesizer	Lead-Synth.
111	84	Whou-Synth 2 AC	Synthesizer	Lead-Synth.
111	85	Whou-Synth 3 AC	Synthesizer	Lead-Synth.
111	86	---		
111	87	---		
111	88	Synth Bass 1 AC	Basses	Synthe bass
111	89	Synth Pad 1 AC	Synthesizer	Pad-Synth.
111	90	Synth Pad 2 AC	Synthesizer	Pad-Synth.
111	91	Synth Pad 3 AC	Synthesizer	Pad-Synth.
111	92	Space Voice 1 AC	Voices	Special
111	93	Utopiasynth 2 AC	Synthesizer	Pad-Synth.
111	94	Fantasy Bells AC	Synthesizer	Pad-Synth.
111	95	P-Syn 1 AC sFX	Synthesizer	Pad-Synth.
111	96	P-Syn 2 AC sFX	Synthesizer	Pad-Synth.
111	97	P-Syn 3 AC sFX	Synthesizer	Pad-Synth.
111	98	JupSyn soft solo	Synthesizer	Lead-Synth.
111	99	Semi AcG. chorus	Strums	E-Guitar
111	100	Nylon-Gt. 1 aAC	Strums	Unplugged
111	101	Nylon-Gt. 2 aAC	Strums	Unplugged
111	102	Nylon-Gt. 3 aAC	Strums	Unplugged
111	103	---		
111	104	---		
111	105	---		
111	106	Banjo AC	Strums	Ethnic
111	107	Vibraphon clean	Percussion & Sonstige	Chromatic
111	108	Clean Guit. 1aAC	Strums	E-Guitar
111	109	Clean Guit.2 aAC	Strums	E-Guitar
111	110	Clean 12-St AC	Strums	E-Guitar
111	111	---		
111	112	---		
111	113	---		
111	114	---		
111	115	---		
111	116	---		
111	117	---		
111	118	---		
111	119	---		
111	120	---		
111	121	---		
111	122	---		
111	123	---		
111	124	---		
111	125	---		
111	126	---		
111	127	---		
111	128	Orch. comb. Hit	Streich- Instrumente	Special
Bank	Sound	<Amadeus (ACC2)>	Category	Group
112	1	Piano 4 dark AC	Pianos	Upright piano
112	2	Piano 5 easy AC	Pianos	Upright piano
112	3	Piano 6 AC	Pianos	Upright piano
112	4	Piano Gr. AC vs	Pianos	Grand piano
112	5	E.Piano 3 AC	Pianos	E-Piano
112	6	E.Piano 4 AC	Pianos	E-Piano
112	7	E-Piano 5 AC	Pianos	E-Piano
112	8	E-Piano 6 AC	Pianos	E-Piano
112	9	E-Piano 7 AC	Pianos	E-Piano
112	10	E.Git 1 HK AC	Strums	E-Guitar
112	11	---		
112	12	---		

SEMPRA 2.0 UPGRADE - INSTALLATION AND PLAYING INSTRUCTIONS

112	13	Grand P. ped sFX	Pianos	Grand piano
112	14	Grand Piano 3sFX	Pianos	Grand piano
112	15	Nyl.Gt 1 HK AC	Strums	Unplugged
112	16	---		
112	17	E.Organ 1 v. AC	Organs	Chorus / Vibrato
112	18	E.Organ 2 v. AC	Organs	Chorus / Vibrato
112	19	E.Organ 3 v. AC	Organs	Chorus / Vibrato
112	20	Pop Organ 1 AC	Organs	Chorus / Vibrato
112	21	Rock Organ 1 AC	Organs	Rotary
112	22	Theatr.Organ1 AC	Organs	Theatre combi
112	23	German Acc. 1 AC	Accordions	Tremolo
112	24	Alpine Acc. 2 AC	Accordions	Tremolo
112	25	Bossa Guit. 1 AC	Strums	Unplugged
112	26	12-Strg.Gt. 1 AC	Strums	Unplugged
112	27	Cntry Guit. 1 AC	Strums	E-Guitar
112	28	Strat.Guit. 1 AC	Strums	E-Guitar
112	29	Strat. Mute 1 AC	Strums	E-Guitar
112	30	Chord Guit. 1 AC	Strums	Unplugged
112	31	Strat.Chord 1 AC	Strums	E-Guitar
112	32	12-Strg.Gt.2 aAC	Strums	Unplugged
112	33	12-Strg.Gt.3 aAC	Strums	Unplugged
112	34	Solo Bass 1 AC	Basses	El.bass
112	35	Guitar Bass 1 AC	Basses	El.bass
112	36	Fretless 1 AC	Basses	El.bass
112	37	Fretl. Bass 2 AC	Basses	El.bass
112	38	Fretless 3 AC	Basses	El.bass
112	39	Picked Bass 2 AC	Basses	El.bass
112	40	Bariton plus AC	Basses	Acoust. bass
112	41	Str.-Bass triple	Strings	Cello / Bass
112	42	Str.-Basspad 4-f	Strings	Special
112	43	MoogBass soft	Basses	Synthe bass
112	44	---		
112	45	---		
112	46	Pad SlowStr.St.2	Strings	Orchestra soft
112	47	Strings Pad	Strings	Orchestra soft
112	48	Dark Strings AC	Strings	Orchestra hard
112	49	Strings perc. AC	Strings	Orchestra hard
112	50	Soft Strg. 2 AC	Strings	Orchestra soft
112	51	Strings Ens.2 AC	Strings	Orchestra soft
112	52	Strings Ens.3 AC	Strings	Orchestra soft
112	53	Bah-Choir 1 AC	Voices	Choir
112	54	Brass high AC	Brass	Combi
112	55	Brass Sect. 3 AC	Brass	Combi
112	56	Bariton 2 AC	Brass	Tuba / Baritone
112	57	Trump.Sect. 1 AC	Brass	Combi
112	58	Horns 1 AC	Brass	Horn
112	59	Tuba fat AC	Brass	Tuba / Baritone
112	60	Brass mtd. 1 AC	Brass	Combi
112	61	Brass mtd. 2 AC	Brass	Combi
112	62	Swell Brass 1 AC	Brass	Combi
112	63	Trumpet 2 prc AC	Brass	Trumpet
112	64	Trombone 2 AC	Brass	Trombone
112	65	Sax Section 1 AC	Reeds	Saxophone
112	66	Tenor Sax 1 AC	Reeds	Saxophone
112	67	Ten. Sax 2 AC	Reeds	Saxophone
112	68	Sax&Clar.Set 1AC	Reeds	Combi
112	69	Sax & Clar clean	Reeds	Combi
112	70	---		
112	71	---		
112	72	Clarinet 2 AC	Reeds	Clarinet
112	73	Clarinet 3 AC	Reeds	Clarinet
112	74	---		
112	75	---		
112	76	Triple Fat Lead	Synthesizer	Lead-Synth.
112	77	---		
112	78	---		
112	79	---		
112	80	---		

SEMPRA 2.0 UPGRADE - INSTALLATION AND PLAYING INSTRUCTIONS

112	81	Perc Moog 1 AC	Synthesizer	Lead-Synth.
112	82	Saw Lead sfx GM	Synthesizer	Lead-Synth.
112	83	---		
112	84	---		
112	85	---		
112	86	---		
112	87	---		
112	88	Synth Bass 2 AC	Basses	Synthe bass
112	89	Pad Synth AC	Synthesizer	Pad-Synth.
112	90	Fatpad Synth	Synthesizer	Pad-Synth.
112	91	Synstr.triple	Synthesizer	Pad-Synth.
112	92	Moogly pad 1	Synthesizer	Pad-Synth.
112	93	Moogly pad 2	Synthesizer	Pad-Synth.
112	94	Moogly pad 8+	Synthesizer	Pad-Synth.
112	95	P-Syn 1 AC 3sFX	Synthesizer	Pad-Synth.
112	96	P-Syn 2 AC 3sFX	Synthesizer	Pad-Synth.
112	97	P-Syn 3 AC 3sFX	Synthesizer	Pad-Synth.
112	98	Fantasy dream	Synthesizer	Pad-Synth.
112	99	Strat. d.amp AC	Strums	E-Guitar
112	100	Flamenco Gt. aAC	Strums	Unplugged
112	101	Folk-Guitar1 aAC	Strums	Unplugged
112	102	Folk-Guitar2 aAC	Strums	Unplugged
112	103	---		
112	104	---		
112	105	WahWah var. 1 AC	Strums	E-Guitar
112	106	WahWah var. 2 AC	Strums	E-Guitar
112	107	WahWah fix 1 AC	Strums	E-Guitar
112	108	Lead E-Guit.1 AC	Strums	Rock-Guitar
112	109	Lead E-Guit.2 AC	Strums	Rock-Guitar
112	110	Lead Ch.Guit. AC	Strums	Rock-Guitar
112	111	---		
112	112	---		
112	113	---		
112	114	Trombone mtd.aAC	Brass	Trombone
112	115	Tromb.mtd/op.aAC	Brass	Trombone
112	116	---		
112	117	---		
112	118	---		
112	119	---		
112	120	---		
112	121	---		
112	122	---		
112	123	---		
112	124	---		
112	125	---		
112	126	---		
112	127	---		
112	128	---		
Bank	Sound	<Amadeus (ACC3)>	Category	Group
113	1	Blues guit. FX	Strums	E-Guitar
113	2	Legend guit. fFX	Strums	E-Guitar
113	3	Legend 2-X fFX	Strums	E-Guitar
113	4	Blues warm fFX	Strums	E-Guitar
113	5	Chorus guit. FX	Strums	E-Guitar
113	6	Ballad guit. fFX	Strums	E-Guitar
113	7	Single Strat sFX	Strums	E-Guitar
113	8	Metalzone 1 fFX	Strums	Rock-Guitar
113	9	Solid Chorus FX	Strums	Rock-Guitar
113	10	Clean Gt2asft vs	Strums	E-Guitar
113	11	60th Strat sFX	Strums	E-Guitar
113	12	Carlos blues Git	Strums	Rock-Guitar
113	13	Deep Stack fFX	Strums	Rock-Guitar
113	14	Warm cl guit fFX	Strums	E-Guitar
113	15	Warm mute sFX	Strums	E-Guitar
113	16	Classic mute sFX	Strums	E-Guitar
113	17	Overdr. mute sFX	Strums	Rock-Guitar
113	18	Crunch guit. sFX	Strums	Rock-Guitar
113	19	Dirty blues. sFX	Strums	Rock-Guitar

113	20	60th mute sFX	Strums	E-Guitar
113	21	Solo-E-Guit. sFX	Strums	E-Guitar
113	22	Semi Ac Guit.sFX	Strums	E-Guitar
113	23	Stereo Strat sFX	Strums	E-Guitar
113	24	MB DistGit 1b FX	Strums	Rock-Guitar
113	25	MB DistGit 1 sfx	Strums	Rock-Guitar
113	26	Drt.Blues.Gt.sFX	Strums	E-Guitar
113	27	Jazz Guit.ACC FX	Strums	E-Guitar
113	28	Muted Akz.Gt. AC	Strums	E-Guitar
113	29	Comb.Guitar 2 FX	Strums	Unplugged
113	30	Chord Gt.AC sFX	Strums	Unplugged
113	31	Mute Guitar sFX	Strums	E-Guitar
113	32	Steel akz.1 HKAC	Strums	Unplugged
113	33	Steel akz.2 HKAC	Strums	Unplugged
113	34	Specialbass 1	Basses	Synthe bass
113	35	Finger.B.Lowdyn	Basses	El.bass
113	36	---		
113	37	---		
113	38	---		
113	39	Mt. Strat. pano	Strums	E-Guitar
113	40	Kings Strat sFX	Strums	E-Guitar
113	41	Shadow's Git. FX	Strums	E-Guitar
113	42	Shadow's Git sFX	Strums	E-Guitar
113	43	---		
113	44	---		
113	45	---		
113	46	---		
113	47	---		
113	48	---		
113	49	---		
113	50	---		
113	51	Str.soft1 oct.AC	Strings	Orchestra soft
113	52	Str.real+celesta	Strings	Special
113	53	Baah-Sing. rh.AC	Voices	Choir
113	54	---		
113	55	---		
113	56	Trompete perc AC	Brass	Trumpet
113	57	Trombone perc vs	Brass	Trombone
113	58	Trombone vs AC	Brass	Trombone
113	59	Brass high vs AC	Brass	Combi
113	60	Flügelh.pad Satz	Brass	Horn
113	61	Brass h./str. AC	Brass	Combi
113	62	---		
113	63	---		
113	64	---		
113	65	---		
113	66	Alto Sax med AC	Reeds	Saxophone
113	67	---		
113	68	---		
113	69	---		
113	70	---		
113	71	---		
113	72	---		
113	73	---		
113	74	---		
113	75	---		
113	76	Duo Fat perc 1	Synthesizer	Lead-Synth.
113	77	---		
113	78	---		
113	79	---		
113	80	Akz.Synt. AC sFX	Synthesizer	Lead-Synth.
113	81	---		
113	82	---		
113	83	---		
113	84	---		
113	85	---		
113	86	---		
113	87	---		

113	88	---		
113	89	---		
113	90	Easy Pad Synth	Synthesizer	Pad-Synth.
113	91	Analogsynth 1	Synthesizer	Lead-Synth.
113	92	---		
113	93	---		
113	94	---		
113	95	---		
113	96	---		
113	97	---		
113	98	---		
113	99	---		
113	100	Nylon-Gt. exc.FX	Strums	Unplugged
113	101	---		
113	102	---		
113	103	---		
113	104	---		
113	105	---		
113	106	---		
113	107	---		
113	108	---		
113	109	---		
113	110	---		
113	111	---		
113	112	---		
113	113	---		
113	114	---		
113	115	---		
113	116	---		
113	117	---		
113	118	---		
113	119	---		
113	120	---		
113	121	---		
113	122	---		
113	123	---		
113	124	---		
113	125	---		
113	126	---		
113	127	---		
113	128	---		
Bank	Sound	<Amadeus (ACC4)>	Category	Group
114	1	Piano soft vs	Pianos	Upright piano
114	2	Piano pd medi.vs	Pianos	Grand piano
114	3	Dyn.Gr.hard vs	Pianos	Grand piano
114	4	ModernSteel 12-S	Strums	Unplugged
114	5	Modern St.Gt AC	Strums	Unplugged
114	6	ModernSteel A	Strums	Unplugged
114	7	SingleStrat ChFX	Strums	E-Guitar
114	8	MultiSt.Git.>1vs	Strums	Unplugged
114	9	Solid Chor. 3sFX	Strums	Rock-Guitar
114	10	60th Strat sFX	Strums	E-Guitar
114	11	60th Strat 3sFS	Strums	E-Guitar
114	12	Jazz Guit. AC vs	Strums	E-Guitar
114	13	Cleanguit. AC vs	Strums	E-Guitar
114	14	SteelGit.1octvs	Strums	Unplugged
114	15	Warm mute 3sFX	Strums	E-Guitar
114	16	Classic mut 3sFX	Strums	E-Guitar
114	17	Overdr.mute 3sFX	Strums	Rock-Guitar
114	18	Crunchguit. 3sFX	Strums	Rock-Guitar
114	19	Dirtyblues. 3sFX	Strums	Rock-Guitar
114	20	60th mute 3sFX	Strums	E-Guitar
114	21	SoloE-Guit. 3sFX	Strums	E-Guitar
114	22	Semi AcGuit.3sFX	Strums	E-Guitar
114	23	Stereo Strat3sFX	Strums	E-Guitar
114	24	Warm L.Git. soft	Strums	E-Guitar
114	25	MB DistGit1 3sfx	Strums	Rock-Guitar
114	26	Drt.Blues.G.3sFX		Sonst.

114	27	Kings Strat sFX		Sonst.
114	28	E.Guit.Mute 1 AC	Strums	E-Guitar
114	29	Clean Gt.easy vs	Strums	E-Guitar
114	30	Chord Gt.AC 3sFX		Sonst.
114	31	Mute Guitar 3sFX		Sonst.
114	32	---		
114	33	MultiGit.>1 vs	Strums	Unplugged
114	34	CountryGt + oct.	Strums	Unplugged
114	35	Nyl.+steel.Gt.AC	Strums	Unplugged
114	36	Combibass add	Basses	Synthe bass
114	37	Akzent E.Gt 1 vs	Strums	E-Guitar
114	38	---		
114	39	AnotherCleanGit1	Strums	E-Guitar
114	40	AnotherCleanGit2	Strums	E-Guitar
114	41	Violin soft fxEQ	Strings	Violin / Viola
114	42	Multisteel G.2vs	Strums	Unplugged
114	43	Multist.Gt h.vs	Strums	Unplugged
114	44	Steel univers 1	Strums	Unplugged
114	45	Steel uni. FX EQ	Strums	Unplugged
114	46	Solid Strat.G.1	Strums	E-Guitar
114	47	Octsteel uniFXEQ	Strums	Unplugged
114	48	Okta.St.rep.FXEQ	Strums	Unplugged
114	49	12-String + stop	Strums	Unplugged
114	50	Str.slow 3 prcvs	Strings	Orchestra soft
114	51	Str. percussiv	Strings	Orchestra soft
114	52	---		
114	53	---		
114	54	---		
114	55	---		
114	56	---		
114	57	---		
114	58	---		
114	59	---		
114	60	Str. romantic 1	Strings	Orchestra soft
114	61	Brass perc. 2fvs	Brass	Combi
114	62	---		
114	63	---		
114	64	---		
114	65	---		
114	66	Alto Sax vs AC	Reeds	Saxophone
114	67	---		
114	68	---		
114	69	---		
114	70	---		
114	71	---		
114	72	---		
114	73	---		
114	74	---		
114	75	---		
114	76	Duo Bpas Synth 1	Synthesizer	Lead-Synth.
114	77	Quinty Bpas Synt	Synthesizer	Lead-Synth.
114	78	---		
114	79	---		
114	80	Akz.Synt.AC 3sFX	Synthesizer	Lead-Synth.
114	81	---		
114	82	---		
114	83	---		
114	84	---		
114	85	---		
114	86	---		
114	87	---		
114	88	---		
114	89	---		
114	90	Warm Pad ACC GM	Synthesizer	Pad-Synth.
114	91	---		
114	92	---		
114	93	---		
114	94	---		

114	95	---		
114	96	---		
114	97	---		
114	98	---		
114	99	---		
114	100	---		
114	101	---		
114	102	---		
114	103	---		
114	104	---		
114	105	---		
114	106	---		
114	107	---		
114	108	---		
114	109	---		
114	110	---		
114	111	---		
114	112	---		
114	113	---		
114	114	---		
114	115	---		
114	116	---		
114	117	---		
114	118	---		
114	119	---		
114	120	---		
114	121	---		
114	122	---		
114	123	---		
114	124	---		
114	125	---		
114	126	---		
114	127	Guitar stop 2	Strums	Unplugged
114	128	Guitar stop	Strums	Unplugged
Bank	Sound	<Drumkits>	Category	Group
128	1	Standard Kit 1	Percussion & others	Drum kit
128	2	Standard Kit 2	Percussion & others	Drum kit
128	3	Pop Drumkit 1 Pro	Percussion & others	Drum kit
128	4	---		
128	5	Acoustic Kit 1	Percussion & others	Drum kit
128	6	---		
128	7	---		
128	8	---		
128	9	Room Kit 1	Percussion & others	Drum kit
128	10	80s Popkit 1 Pro	Percussion & others	Drum kit
128	11	---		
128	12	---		
128	13	---		
128	14	Latin-Kit 1	Percussion & others	Drum kit
128	15	---		
128	16	---		
128	17	Power Kit 1	Percussion & others	Drum kit
128	18	Schlagerkit Pro	Percussion & others	Drum kit
128	19	---		
128	20	---		
128	21	Rock Kit 1	Percussion & others	Drum kit
128	22	---		
128	23	---		
128	24	---		
128	25	Electr.Kit 1	Percussion & others	Drum kit
128	26	TR 808 Kit 1	Percussion & others	Drum kit
128	27	Dance Kit 1	Percussion & others	Drum kit
128	28	Electr.Kit 2 Pro	Percussion & others	Drum kit
128	29	Dance Kit 2 Pro	Percussion & others	Drum kit
128	30	---		
128	31	---		
128	32	Böhmat Kit Pro	Percussion & others	Drum kit
128	33	Jazz Kit 1	Percussion & others	Drum kit

128	34	---		
128	35	---		
128	36	---		
128	37	---		
128	38	---		
128	39	---		
128	40	---		
128	41	Brush Kit 1	Percussion & others	Drum kit
128	42	Brush Kit 2	Percussion & others	Drum kit
128	43	---		
128	44	---		
128	45	Percussion Kit 1	Percussion & others	Drum kit
128	46	---		
128	47	---		
128	48	---		
128	49	Orchestra Kit 1	Percussion & others	Drum kit
128	50	---		
128	51	---		
128	52	GS Standard Kit	Percussion & others	Drum kit
128	53	GS Room Kit	Percussion & others	Drum kit
128	54	GS Power Kit	Percussion & others	Drum kit
128	55	GS Electr.Kit	Percussion & others	Drum kit
128	56	GS 808 Kit	Percussion & others	Drum kit
128	57	GS Jazz Kit	Percussion & others	Drum kit
128	58	GS Brush Kit	Percussion & others	Drum kit
128	59	GS Orch.Kit	Percussion & others	Drum kit
128	60	GS Sound FX Kit	Percussion & others	Drum kit
128	61	GS CM64/32	Percussion & others	Drum kit
128	62	---		
128	63	---		
128	64	---		
128	65	---		
128	66	---		
128	67	---		
128	68	---		
128	69	---		
128	70	---		
128	71	---		
128	72	---		
128	73	---		
128	74	---		
128	75	---		
128	76	---		
128	77	---		
128	78	---		
128	79	---		
128	80	---		
128	81	---		
128	82	---		
128	83	---		
128	84	---		
128	85	---		
128	86	---		
128	87	---		
128	88	---		
128	89	---		
128	90	---		
128	91	---		
128	92	---		
128	93	---		
128	94	---		
128	95	---		
128	96	---		
128	97	---		
128	98	---		
128	99	---		
128	100	---		
128	101	---		

128	102	---		
128	103	---		
128	104	---		
128	105	---		
128	106	---		
128	107	---		
128	108	---		
128	109	---		
128	110	---		
128	111	Bassdrums	Percussion & others	Drum kit
128	112	Snaredrums	Percussion & others	Drum kit
128	113	Brush	Percussion & others	Drum kit
128	114	HiHats	Percussion & others	Drum kit
128	115	Cymbals	Percussion & others	Drum kit
128	116	Toms	Percussion & others	Drum kit
128	117	Perc.1	Percussion & others	Drum kit
128	118	Perc.2	Percussion & others	Drum kit
128	119	Perc.3	Percussion & others	Drum kit
128	120	Perc.4	Percussion & others	Drum kit
128	121	---		
128	122	---		
128	123	---		
128	124	---		
128	125	---		
128	126	---		
128	127	---		
128	128	---		



KEYSWERK Musikelektronik GmbH

Warbersche Str. 32

31675 Bückeburg

Germany

Tel.: 05722 905088

Internet <http://www.boehm-organs.com>

E-Mail info@boehm-organs.com